

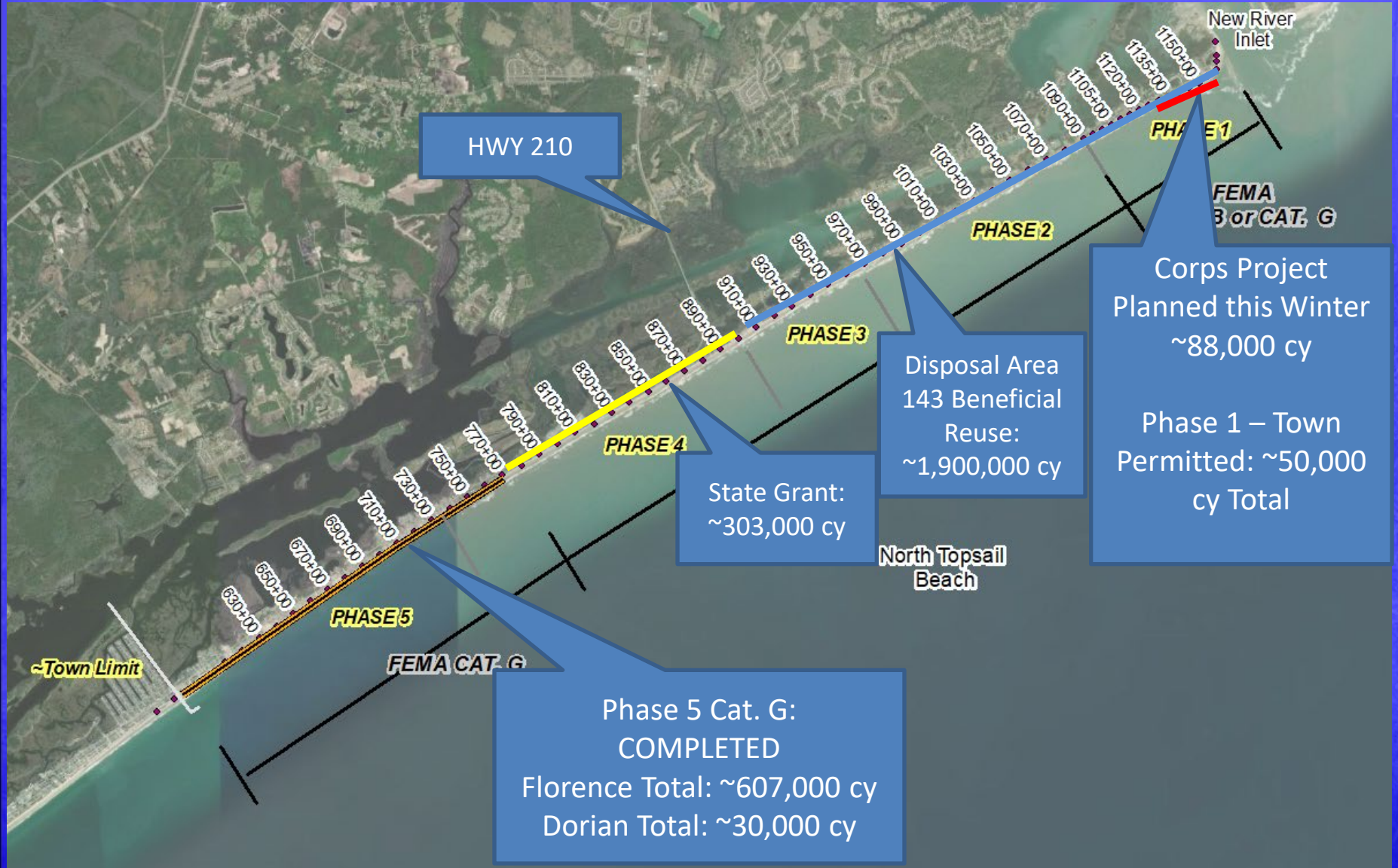
North Topsail Beach Coastal Update November 2024



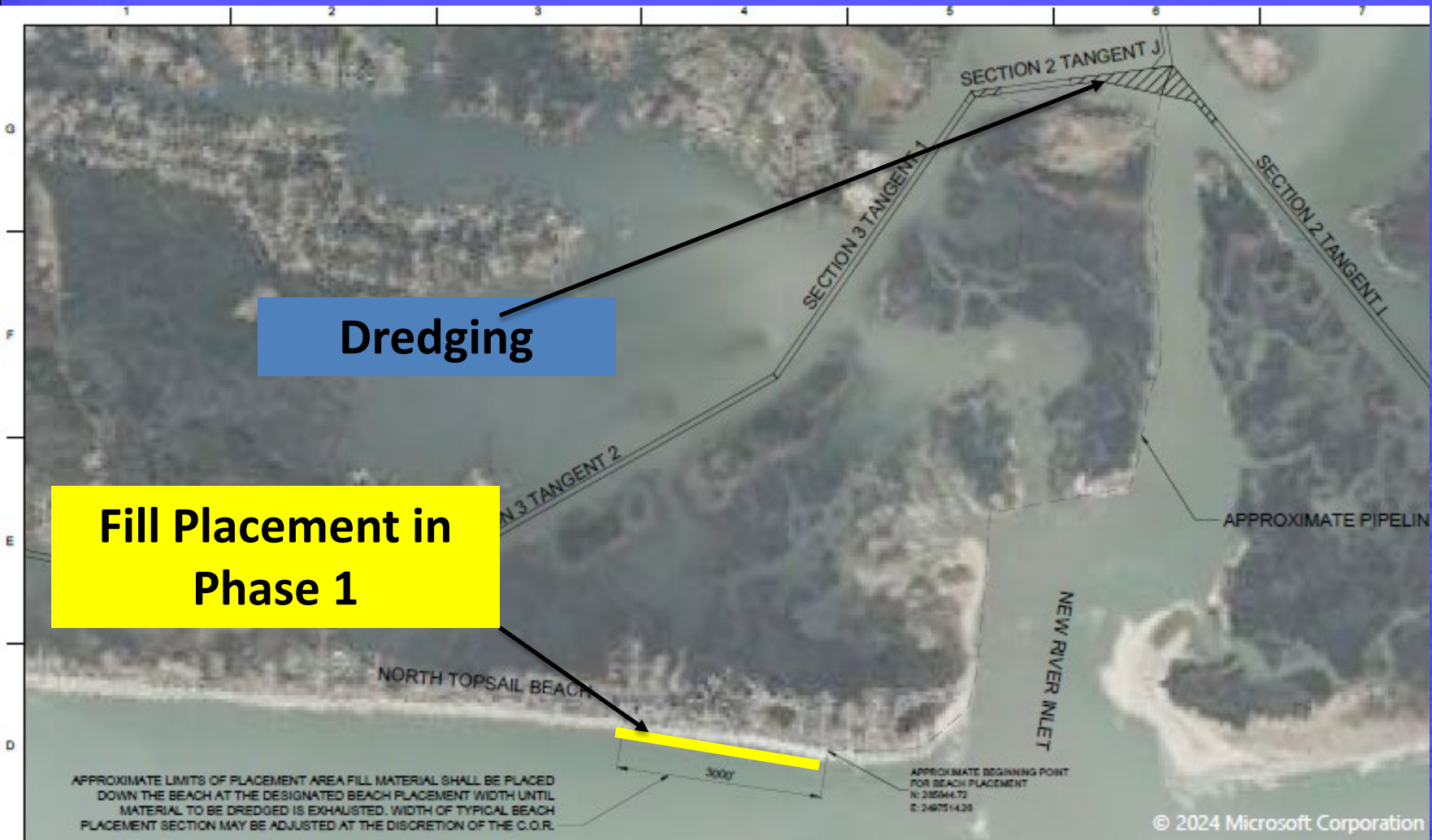
Marina, Coastal, Environmental
& Water Resources Engineers

Recent and Upcoming Projects Overview

State Grant, Beneficial Reuse, Florence FEMA Category G

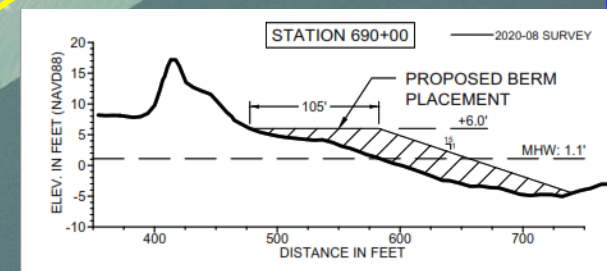
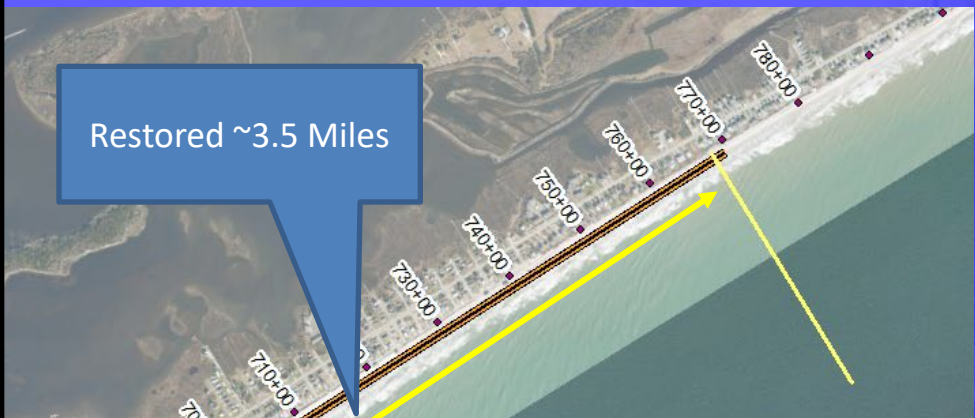


USACE Navigation Dredging and Placement This Winter Corps Project Out For Bid Awarded to Southwinds:



**Estimated Yardage in Corps Bid Package: 88,000 cy
(dependent on additional sedimentation between now and project)**

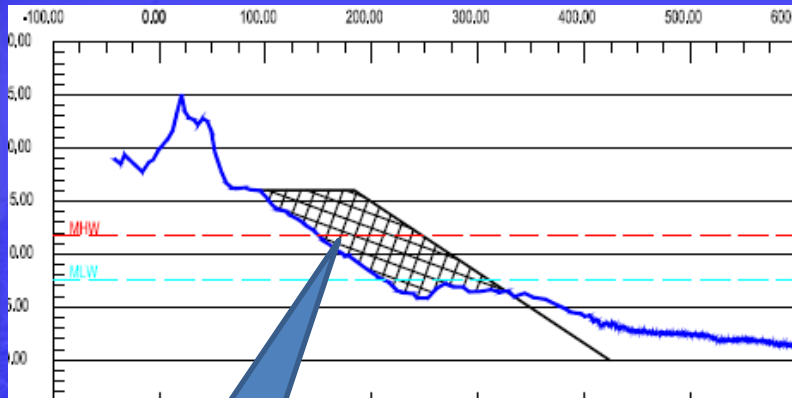
COMPLETED FEMA Mitigation Nourishment in Phase 5 (and some Phase 4) Beach (not Dune) Nourishment. ~3.5 Miles of Restored Beach



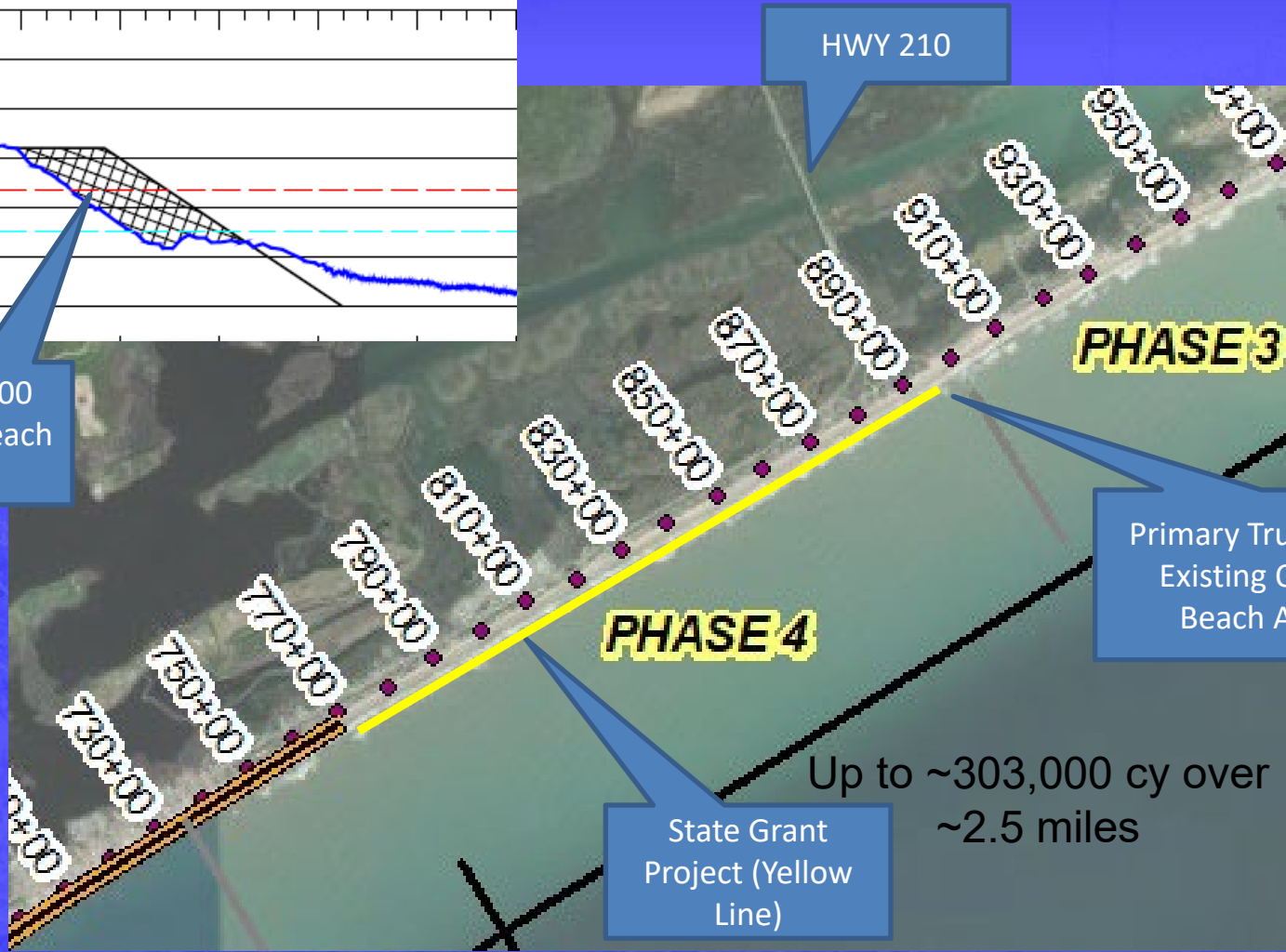
PHASE 5



Successful State Grant in Phase 4. Beach (not Dune) Nourishment



~80 to 100 Feet of Beach Width



State Grant Project (Yellow Line)

Up to ~303,000 cy over ~2.5 miles

Primary Truck Access at Existing Opening at Beach Access 33

HWY 210

To Begin November 16, 2024

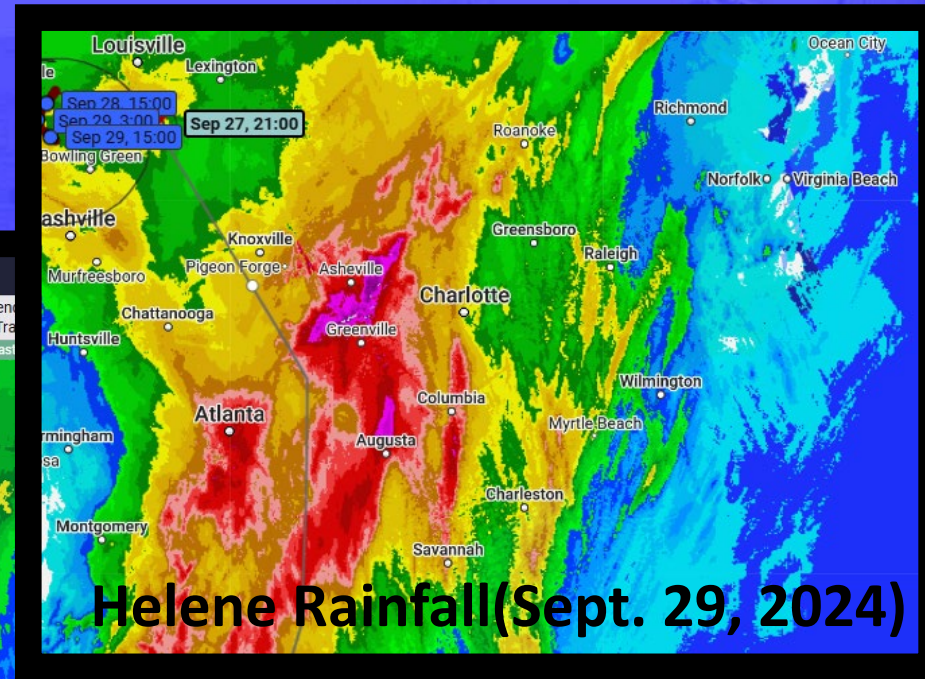
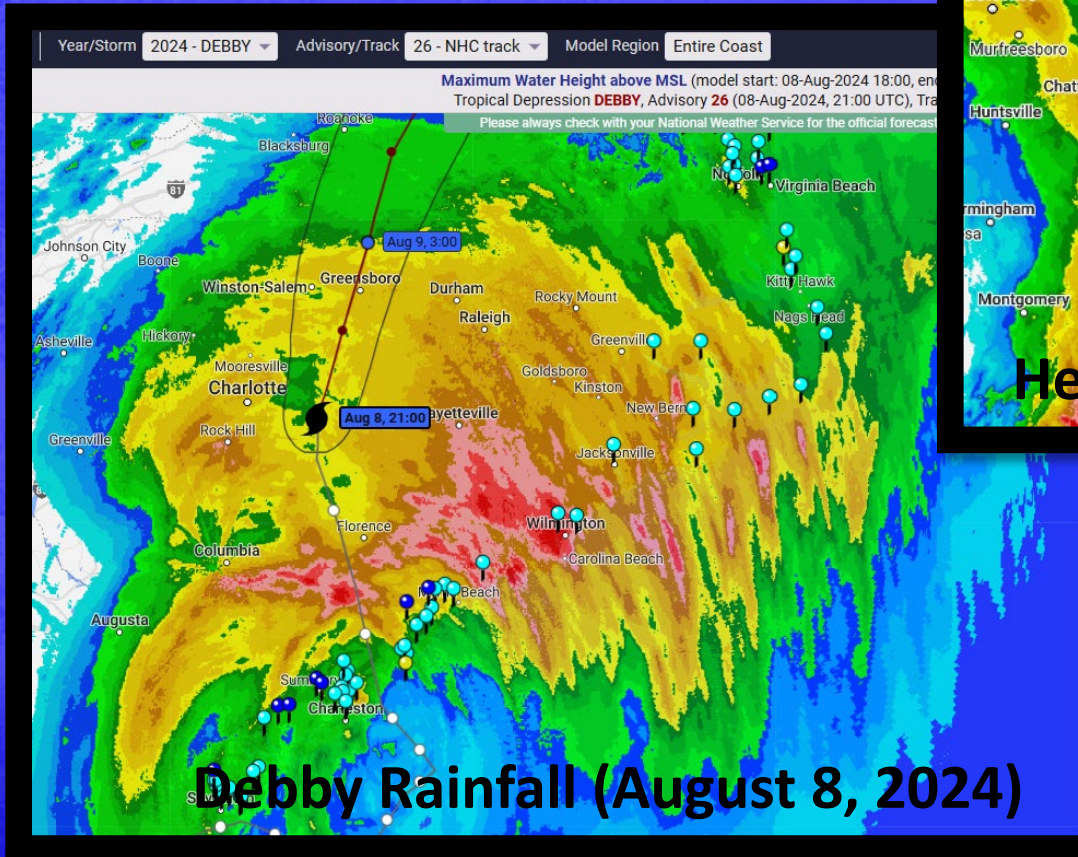
Disposal Area (DA) 143 Beneficial Reuse and Placement in Phases 1, 2, and 3

- Investigations Ongoing,
- Permit Application to Follow.
- 2024 Analysis shows up to 2.6 million cubic yards at DA 143 (1.9 million cubic yards was previous estimate)



Potential Tropical Cyclone (PTC) 8

- Debby (early August) – No FEMA/NCEM involvement
- Helene (late September) – No FEMA/NCEM involvement for Coastal Counties
- PTC 8 – See next slide



Potential Tropical Cyclone (PTC) 8

DECLARED OCTOBER 19, 2024

SUMMARY

STATE: North Carolina
NUMBER: FEMA-4837-DR
INCIDENT: Potential Tropical Cyclone Eight
INCIDENT PERIOD: September 16-20, 2024
DATE REQUESTED BY GOVERNOR: October 16, 2024
FEDERAL COORDINATING OFFICER: E. Craig Levy, Sr.
National FCO Program

DESIGNATIONS AND TYPES OF ASSISTANCE:

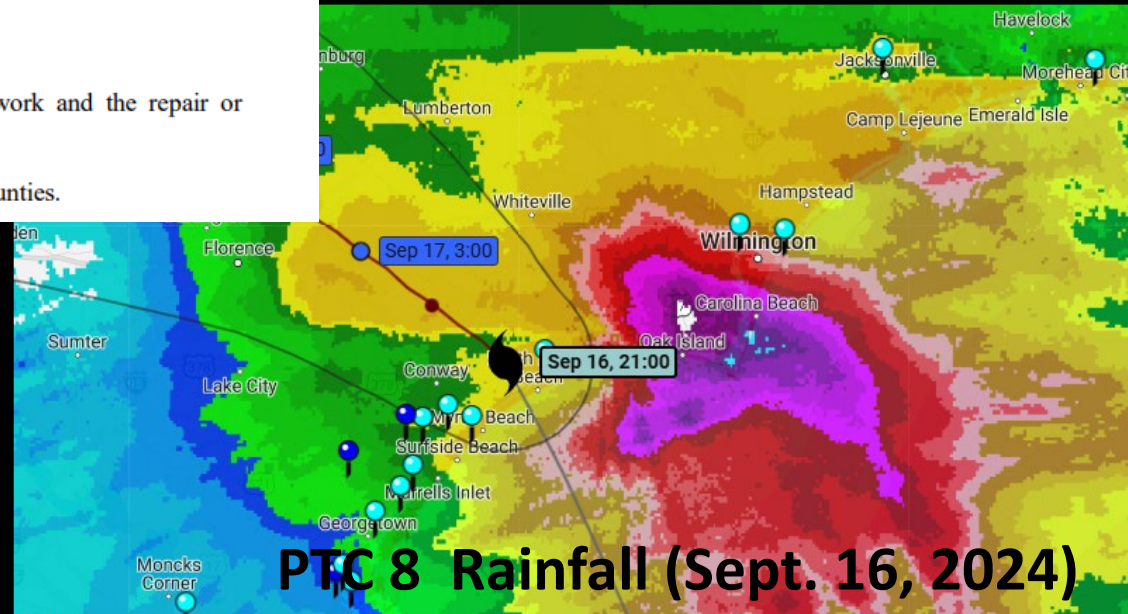
INDIVIDUAL ASSISTANCE (Assistance to individuals and households):

Not Requested.

PUBLIC ASSISTANCE (Assistance for emergency work and the repair or replacement of disaster-damaged facilities):

Brunswick, Carteret, New Hanover, and Onslow Counties.

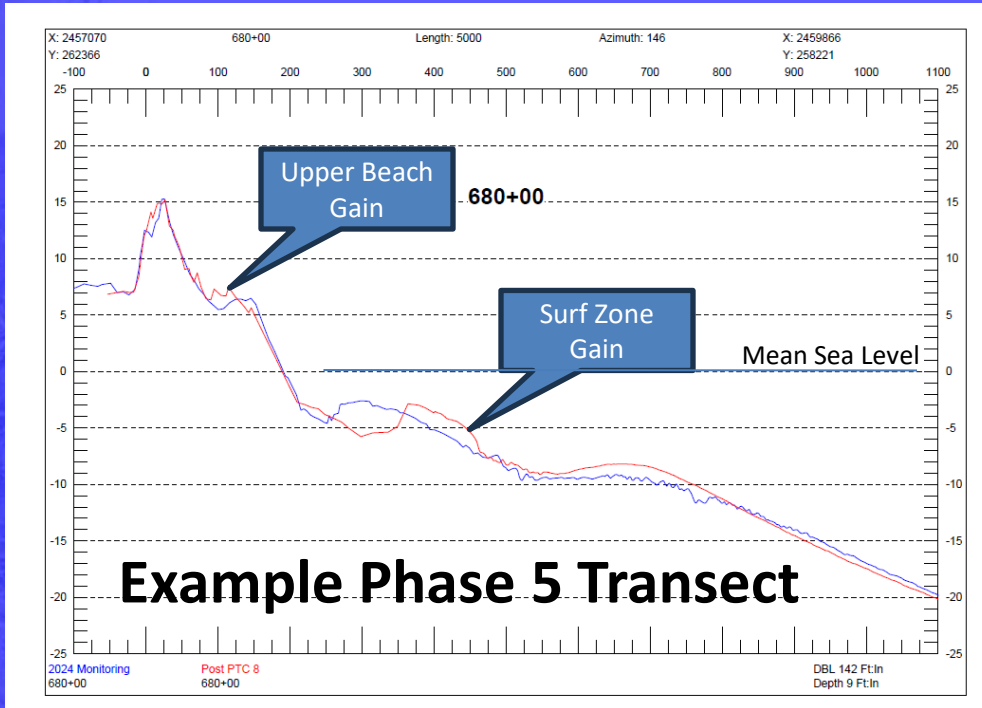
- Phase 5
“Engineered Beach” Shoreline
– Gained Volume
- Dune losses
measured for
entire shoreline



PTC 8 Rainfall (Sept. 16, 2024)

Potential Tropical Cyclone (PTC) 8

- Phase 5 “Engineered Beach” Shoreline – Gained Volume



Dune Losses



Dune Losses

	Shoreline Length (miles)	Net loss (CY)	Gross Loss (CY)
PHASE 1	1.5	14,641	15,629
PHASE 2	2.3	22,068	33,710
PHASE 3	1.3	7,414	7,697
PHASE 4	3.2	16,956	26,274
PHASE 5	3.1	-28,680	4,502
TOTALS		32,400	87,812

Net Losses
 = ~61,000 cy if don't include Phase 5



Town Beach Projects Updates

- Phase 1 – Corps AIWW Project this winter (~88,000 cy estimated, Southwinds Dredging)
- New River Inlet Management Master Plan EIS: Final Sections of Draft EIS under development.
- State Grant Nourishment - ~303,000 cy in Phase 4 to begin November 16.
- Post Tropical Storm Survey submitted to FEMA/NCEM for PTC 8. 61,000 cy to 88,000 cy potentially eligible. Focus on Phases 1,2 and 3.
- Disposal Area 143 Beneficial Reuse for Nourishment of Phases 1,2,3 of between ~1.9 and ~2.6 million cubic yards - investigations ongoing , then permitting
- Working with NTB Finance Officer and DEC Associates regarding funding for FEMA and State funded projects
- Grant Coordination
- Permitting Coordination (all projects)

