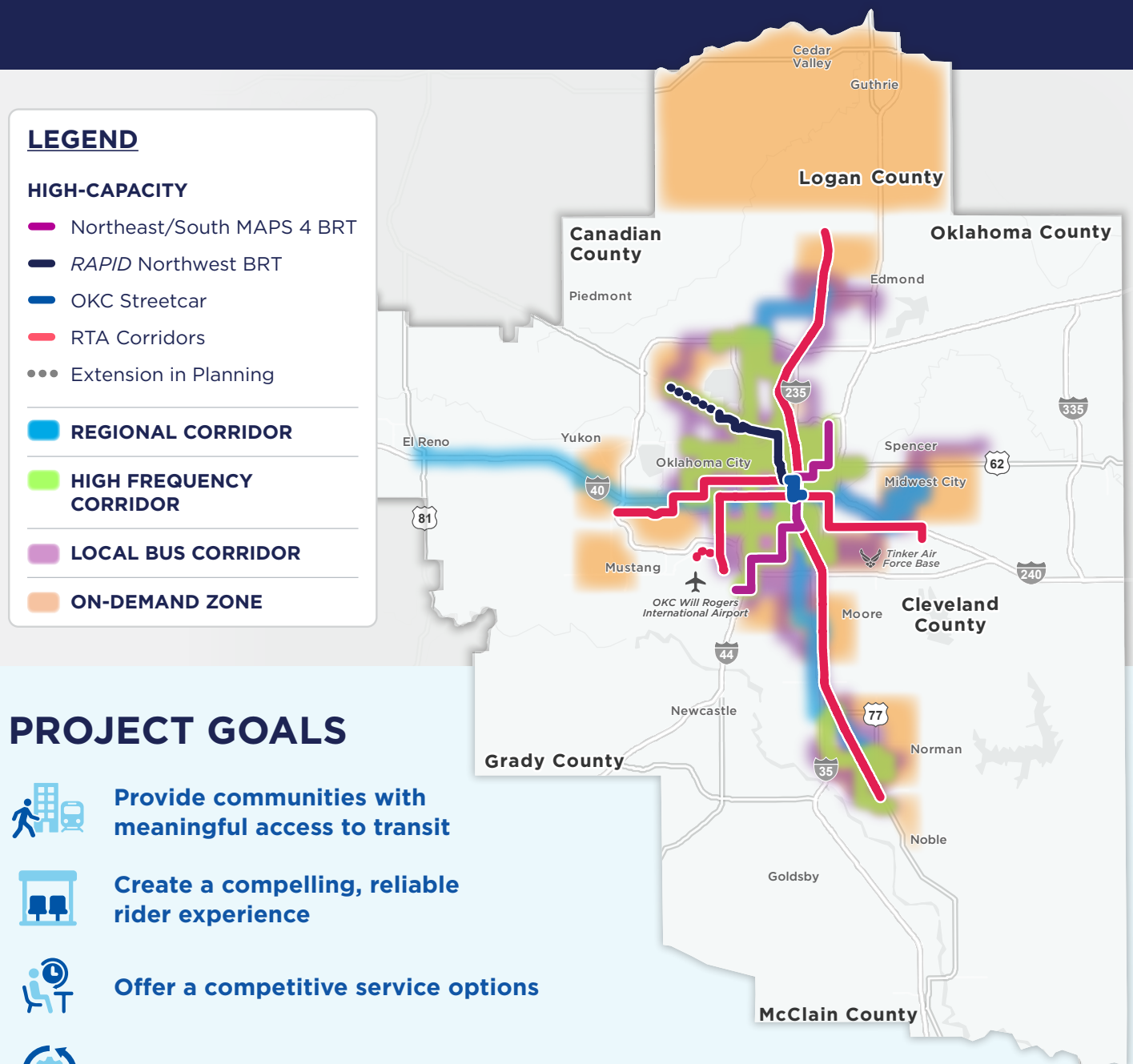


CENTRAL OKLAHOMA LONG RANGE TRANSIT PLAN

Central Oklahoma is growing—and so must its transit system. Building on two decades of planning, the Long Range Transit Plan (LRTP) sets a bold vision for the next 30+ years, designed to meet the region's evolving needs.

Developed with input from community members and stakeholders, the LRTP takes a regional approach to improving mobility. It leverages high-capacity transit investments to expand access, support economic development, and prepare for future growth—while encouraging even more. The plan lays the groundwork for a more connected, accessible region.



PROCESS



Community-driven
needs assessment





Data-driven analysis to
identify opportunities



Aligning with previous plans
and stakeholder input



TRANSIT VISION

What We Heard 	The Vision 
Need to respond to projected growth in Central Oklahoma	Includes 15 on-demand zones in high growth areas and strategies to support sustainable development along high-capacity corridors and high-density areas
Desire for increased service frequency and longer service hours	Establishes a core network of high-capacity and high frequency services with extended service windows throughout the system to support a wider variety of trip types
Need for improved transfers to make trips more seamless and convenient	Identifies opportunities to invest in passenger and driver facilities to support better transfers and provide riders with more amenities
Desire for transit service between jurisdictions	Proposes new or enhanced routes to promote connectivity between jurisdictions such as Edmond, Oklahoma City, Norman, El Reno, Midwest City, and Spencer on weekdays and weekends
Prioritize reliability in the transit network so buses arrive when expected and riders can plan their trips with confidence	Provides potential technological investments to prioritize transit in the roadway for more service while increasing reliability

PROJECT PARTNERS

PROJECT LEADS



OPERATING PARTNERS



NORMAN Transit
(DBA EMBARK NORMAN)

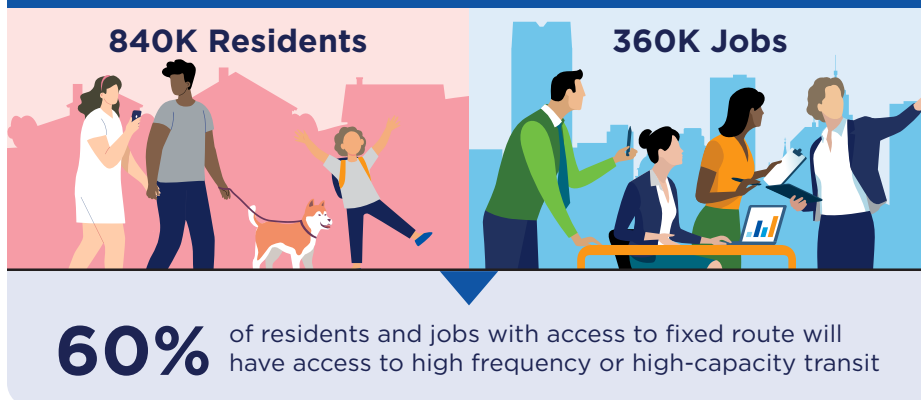
GOVERNMENT PARTNERS



PHASING

Short-Term	Mid-Term	Long-Term
0-10 Years	10-20 Years	20-30+ Years
Targeted Improvements in Key Areas	Core Network of High-Capacity and High Frequency Services	Integrated Transit System
High-Capacity Transit Investments: NE/S MAPS 4 BRT Corridor & OKC Streetcar Extension (to MAPS 4 Multipurpose Stadium)	High-Capacity Transit Investments: RTA N/S Commuter Rail, RTA West BRT Corridor, RTA East Corridor, RTA Airport LRT Corridor & RTA FAA Extension	High-Capacity Transit Investments: OKC Streetcar Extension (Innovation District), <i>RAPID</i> NW BRT Extension
Local Service Investments: <ul style="list-style-type: none"> Frequency improvements on select routes Enhanced nighttime and weekend service on select routes 	Local Service Investments: <ul style="list-style-type: none"> Frequency improvements on core network Enhanced nighttime and weekend service on core network Increased regional connectivity through high-capacity service improvements 	Local Service Investments: <ul style="list-style-type: none"> Enhanced nighttime and weekend service on local bus corridors Partnerships to establish and enhance transit access through on-demand zones Increased regional connectivity through express service on regional corridors

Connecting Communities Through Convenient Transit



Investing in high frequency and high-capacity transit services near jobs and housing gives people the flexibility to get to work, school, and daily destinations without relying on a car. This not only makes commuting more affordable and convenient—it also helps reduce traffic congestion across Central Oklahoma.

COMMUNITY BENEFITS



Transit investments **stimulate the local economy** by attracting business and encouraging development to improve **economic competitiveness**.



Transit hubs and easy access to high-capacity and high frequency services can increase **property values** by spurring **residential and commercial development**.

KEY ACTIONS TO DELIVER THE PLAN



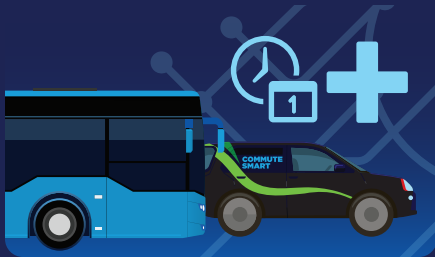
✔ Enhance the Rider Experience

Standardize branding, integrate fare systems, and invest in transit-oriented development and mobility hubs to create seamless, intuitive, and attractive transit experiences.



✔ Establish Strategic Partnerships

Collaborate with public agencies, private sector, non-profits to accelerate infrastructure, strengthen workforce, and expand access.



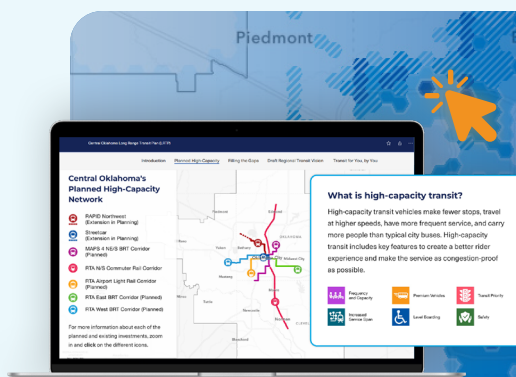
✔ Diversify Services

Expand high-frequency routes, on-demand zones, and off-peak service to deliver flexible, inclusive mobility.



✔ Increase Reliable Funding

Leverage local taxes, developer contributions, federal grants, and private investment to fuel long-term transit investments and sustainable operations.



**CHECK OUT THE FULL
LRTP HERE!**

<https://tinyurl.com/OKLRTP-Storymap>

