

How to print a site plan from the City's website:

1. First, open the interactive map as found on the City's website: <https://www.normanok.gov/your-government/departments/planning-and-community-development/gis-services>

City of Norman, OK
Building an Inclusive Community

Translate Connect With Us Contact Pay Online

For Residents & Visitors For Businesses Public Safety Your Government News & Events Search Q

Home > Your Government > Find a Department > Planning and Community Development > GIS Services

Planning and Community Development

- Your Government Overview
- Boards & Commissions
- City Council
- City Ordinances
- > Departments
 - City Attorney
 - City Clerk
 - City Manager
 - Finance
 - Human Resources
 - Information Technology
 - Municipal Court
 - Parks & Recreation
 - > Planning and Community Development
 - Planning and Zoning
 - Planning Projects
 - Code Compliance
 - Development Services
 - > **GIS Services**
 - Grant Programs
 - Public Works Department
 - Utilities
- Diversity and Equity
- Mayor
- Projects & Initiatives
- Public Information

GIS Services

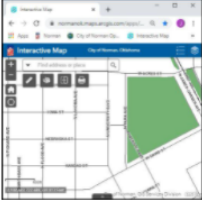
The mission of this division of the Planning and Community Development Department is to provide decision and policy makers within the city information needed to effectively manage the city's resources in a format that can be easily understood and visualized in a fashion that allows patterns and relationships to be discerned. In order to fulfill this mission, GIS Services maintains geographically enabled databases documenting all the major components of the infrastructure and legally mandated management zones for the City of Norman. These databases include, but are not limited to: wastewater collection system, water distribution system, storm water collection system, zoning, Norman 2025 land use plan, city council wards, historic districts, recoupment districts, property ownership patterns, street centerlines, building footprints, paving, fences, trees, police beats, fire districts, sanitation routing, topography, hydrography, and digital aerial orthophotography.

This division exists because the majority of the resources that a city must manage (sewer line, water lines, streets) and the services it must provide (water or trash service to a residence, calls for police or fire service) have a geographic component. Creating databases organized around geography allows the content to be modeled and visualized more effectively. The capacity to link data, which previously did not exist or was stored in unrelated tables, facilitates more creative and efficient problem solving and service delivery citywide.

Mapping Applications and Resources

Open Data & Mapping +

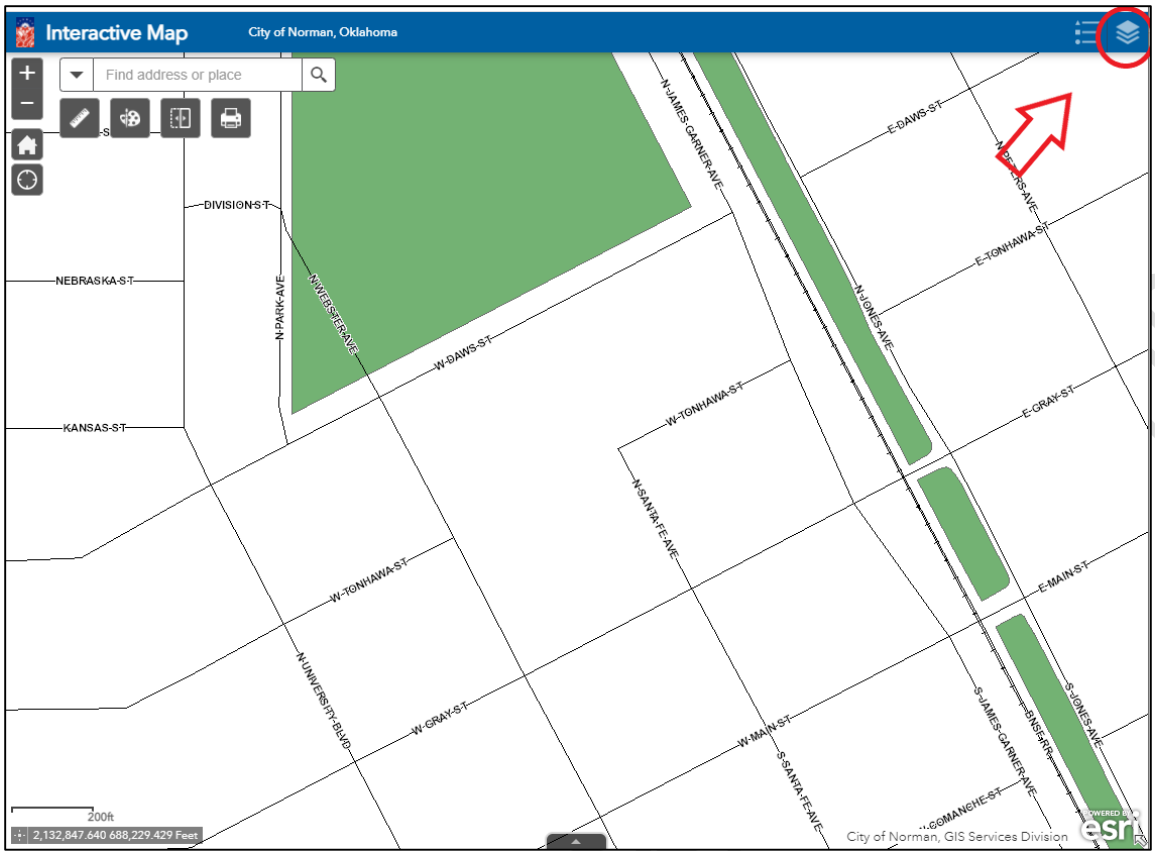
Interactive Map -



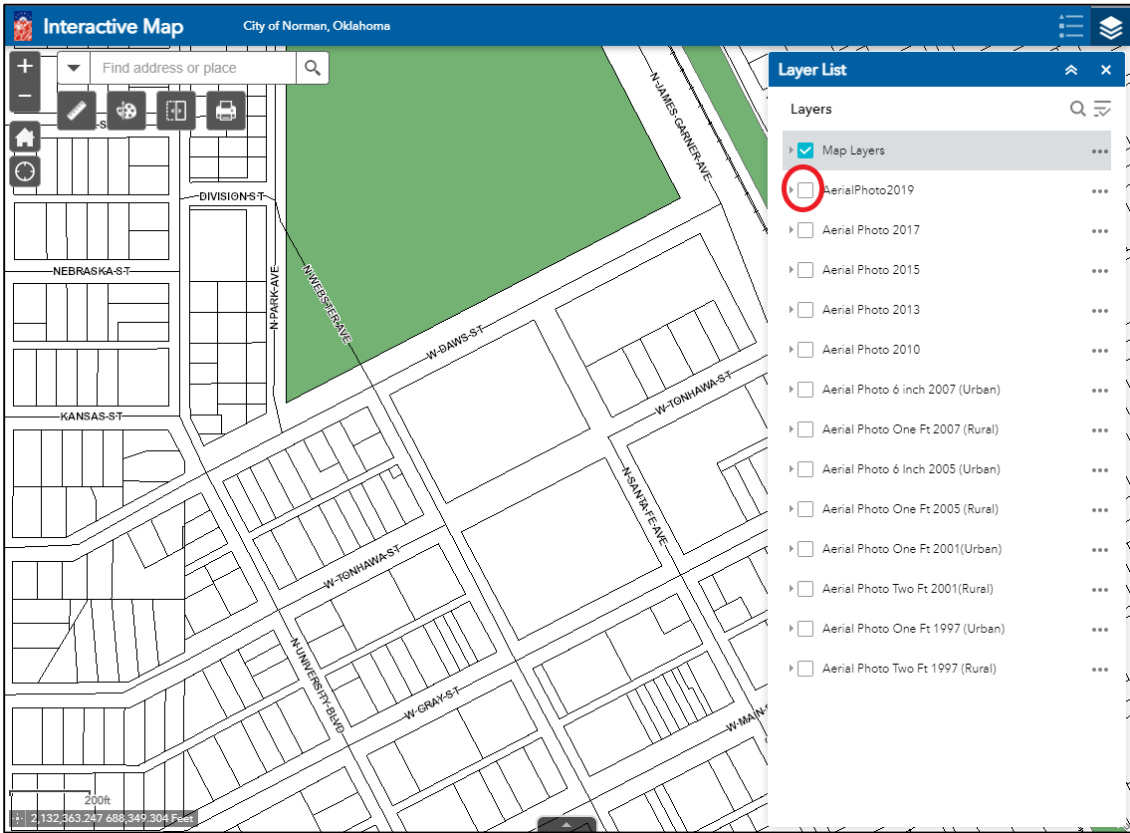
The map provides display and identify access to many of the City's GIS layers. The data are to be used for general reference only. All data are provided as is, with all faults, and without warranty of any kind, expressed or implied, including but not limited to, the implied purpose. The City of Norman does not warrant that the data will meet your requirements nor that operation of the data and/or application will be uninterrupted and error free. Maps and data generated using these applications may be e-mailed or printed, with the understanding that they will be used for general reference only, without any claims of completeness or accuracy.

Open Interactive Map

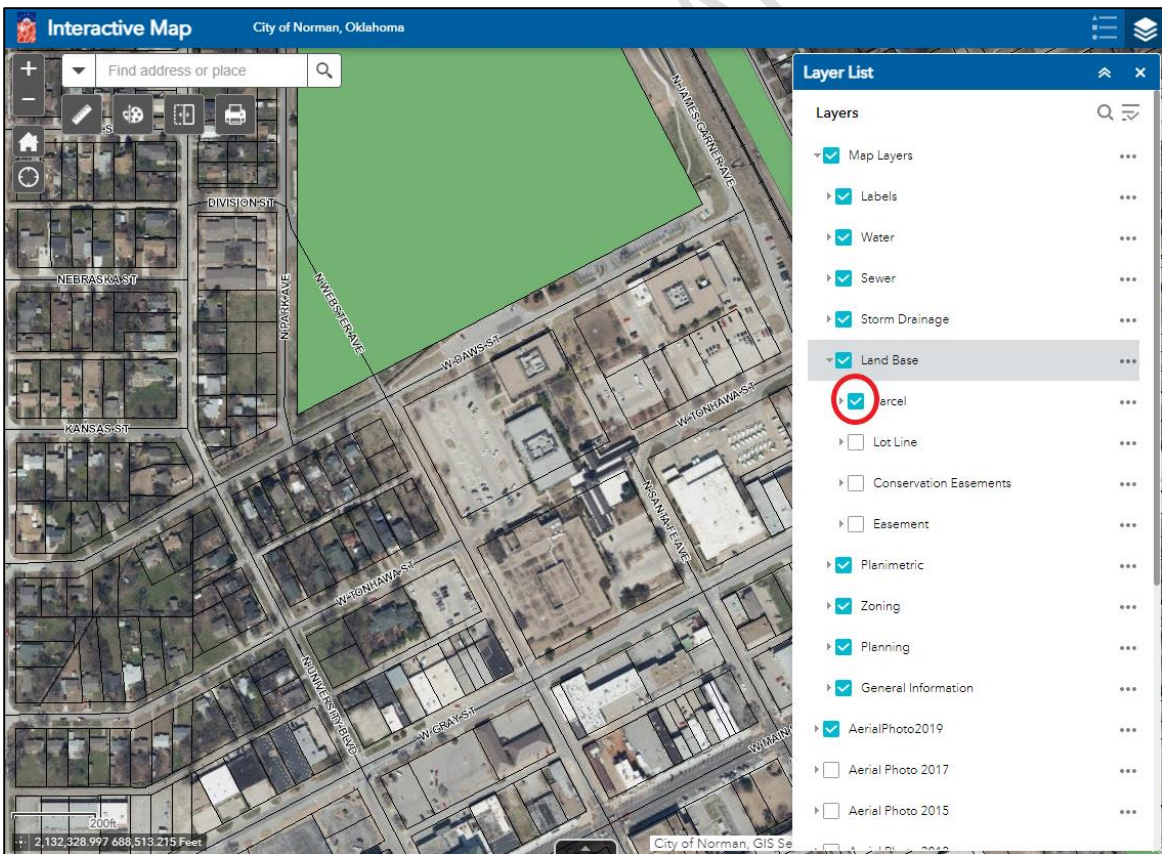
2. Search for the subject property on the map. You can either scroll and find the property or you can search for a property using the search bar. Once you find the subject property on the interactive map, open the “layer list” by clicking the layer tab in the top right corner of the map.



3. Check the box for “AerialPhoto2019”



4. Under “Map layers” check the box for “Parcel” found under the “Land Base” tab.



5. Zoom in on the subject property and click the Printer button found in the top left corner.

Interactive Map City of Norman, Oklahoma

Find address or place

Map navigation controls: Home, Full Screen, Print (circled in red), Measure, Layers, and Refresh.

Map layers:

- Map Layers
- Labels
- Water
- Sewer
- Storm Drainage
- Land Base
 - Parcel
 - Lot Line
 - Conservation Easements
 - Easement
- Planimetric
- Zoning
- Planning
- General Information
- AerialPhoto2019
- Aerial Photo 2017
- Aerial Photo 2015

Map coordinates: 2,132,328.997 688,513.215 Feet

City of Norman, GIS Se