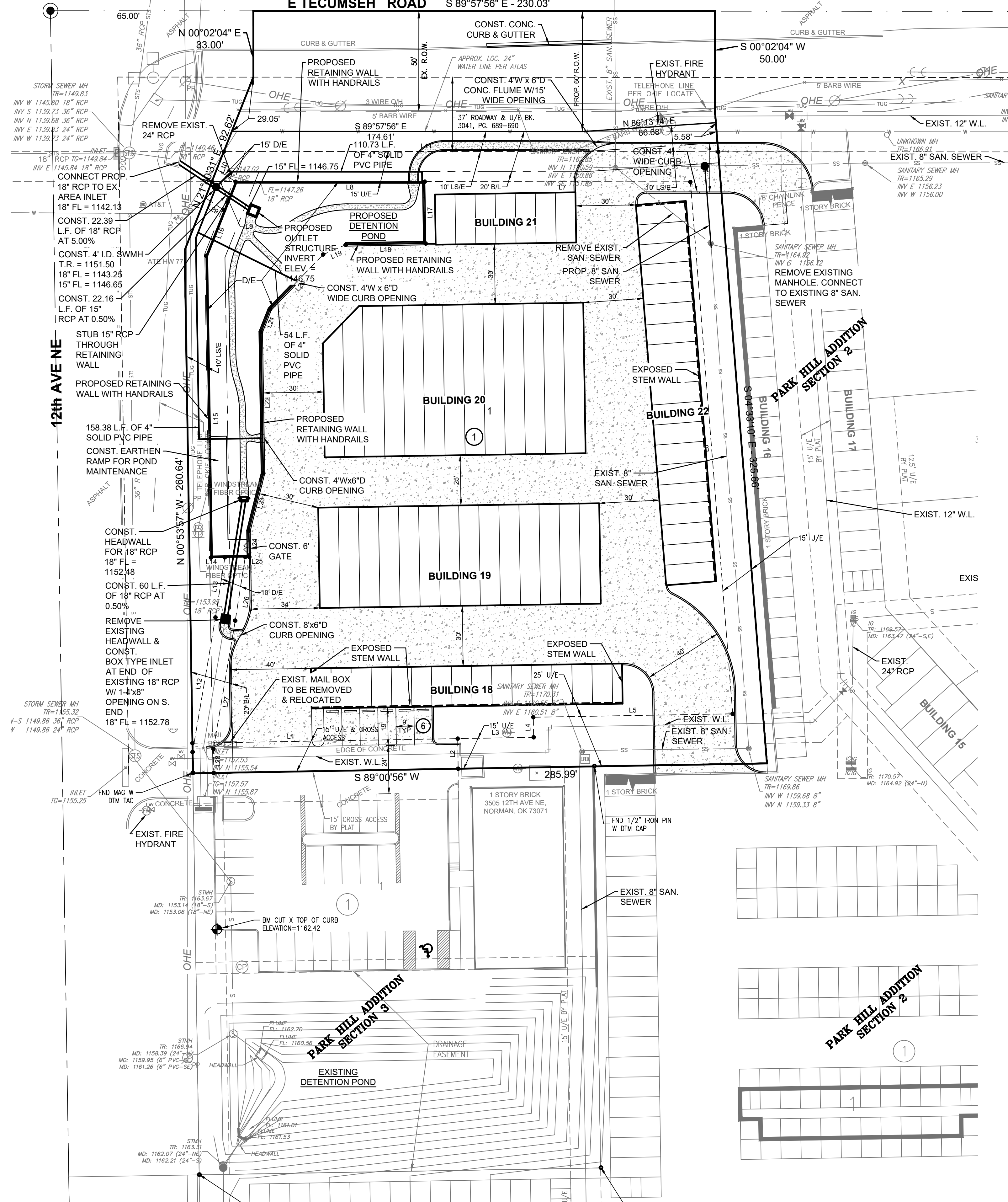
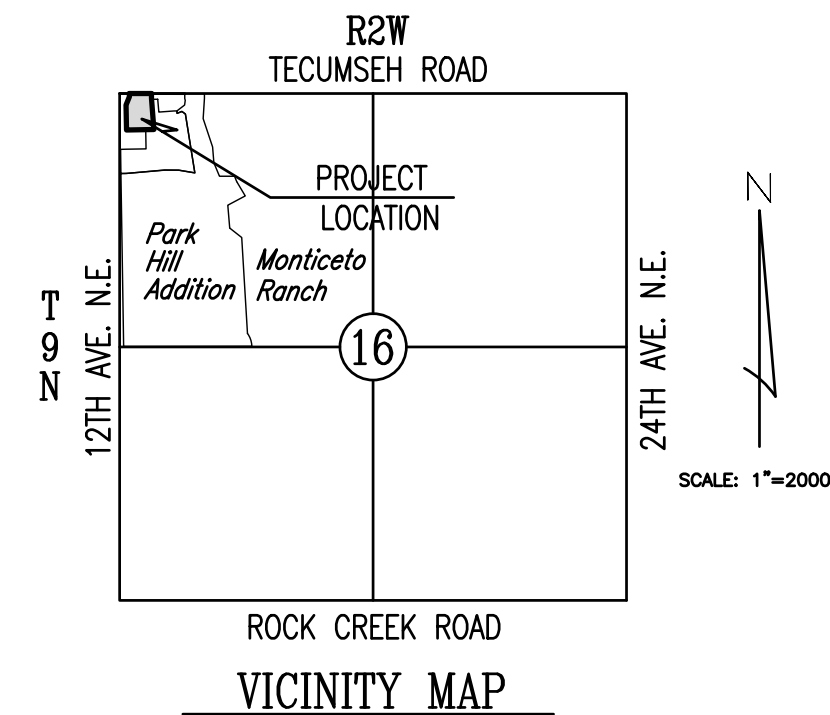


FINAL SITE DEVELOPMENT PLAN
PARK HILL ADDITION SECTION 4
 (A PLANNED UNIT DEVELOPMENT)
 A PART OF THE N.W. 1/4 OF SECTION 16, T9N, R2W, I.M.
 NORMAN, CLEVELAND COUNTY, OKLAHOMA

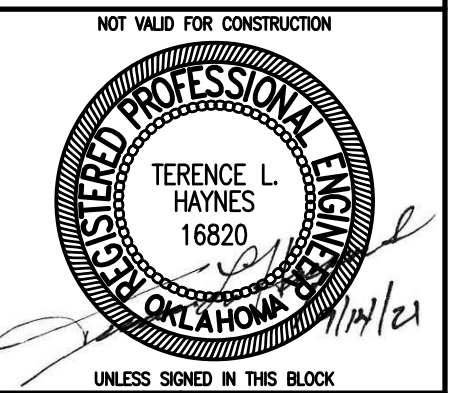
E TECUMSEH ROAD S 89°57'56" E - 230.03'



LINE	BEARING	DISTANCE
L1	N 89°00'56" E	132.17'
L2	S 00°53'57" E	15.00'
L3	N 89°00'56" E	37.83'
L4	N 00°53'57" W	10.00'
L5	N 89°00'56" E	99.36'
L6	N 04°33'10" W	265.78'
L7	N 89°57'56" W	132.36'
L8	S 89°57'56" W	94.18'
L9	N 89°57'56" W	11.83'
L10	N 21°40'31" E	16.14'
L11	S 89°57'56" E	246.27'
L12	N 09°39'26" E	67.98'
L13	N 08°52'52" E	30.29'
L14	N 89°06'03" E	6.95'
L15	N 00°53'57" W	150.30'
L16	N 21°40'31" E	24.33'
L17	S 00°53'57" E	30.81'
L18	S 89°06'03" W	39.86'
L19	S 69°36'00" W	12.20'
L20	S 44°05'58" W	37.96'
L21	S 21°36'00" W	12.20'
L22	S 00°53'57" E	70.41'
L23	S 14°10'53" W	28.43'
L24	S 00°53'57" E	13.06'
L25	S 89°06'03" W	2.03'
L26	S 08°52'52" W	32.08'
L27	S 09°39'26" W	64.79'
L28	S 00°59'04" E	11.98'
L29	N 56°28'08" W	11.24'



© SMC CONSULTING ENGINEERS, P.C. ALL RIGHTS RESERVED THESE DOCUMENTS MAY NOT BE USED FOR ANY PURPOSES WITHOUT PRIOR WRITTEN PERMISSION FROM SMC CONSULTING ENGINEERS, P.C.



PARK HILL ADDITION SECTION 4
12TH AVE. N.E. & E. TECUMSEH RD.
NORMAN, OKLAHOMA

SMC Consulting Engineers, P.C.
 616
 402-232-7715 Fax: 405-232-7639
 Website: www.smcok.com
 OAHAMA CERTIFICATE OF AUTHORIZATION NO. CA 464 EXP. 09/29/2023
 No. Revision Date
 1 CITY REVIEW COMMENTS 08/12/21

PROJECT NO.: 6402.00
 DATE: 08/12/21
 SCALE: 1" = 30'
 DRAWN BY: MDS
 ENGINEER: TERENCE L. HAYNES
 P.E. NUMBER: 16820

FINAL SITE DEVELOPMENT PLAN
 SHEET NO.
1

W:\045\6402.00 - STAMCO - PARK HILL CONDOMINIUM CORNER/VIA FINAL SITE DEVELOPMENT PLAN.DWG
 Printed by: Ben Davidson on 8/19/2021 1:24 PM