

YOUR SOLAR PROJECT WILL IMPACT CITY OF NORMAN - LINE MAINTENANCE BUILDING FOR OVER 30 YEARS

Energy costs continue to rise, increasing the financial burden on City of Norman - Line Maintenance Building, which currently spends \$17,454 annually on electricity.

A Brightwell solar project can change this future.

Lower Costs

A better way to buy electricity *just arrived*

Electricity is a non-negotiable expense, but how you purchase it can be reimaged. A Brightwell solar project allows City of Norman - Line Maintenance Building to lock in a lower cost of solar energy in year one while protecting against future rate increases. The 88 kW PV system will offset 81% of your facility's energy consumption, transforming \$291,683 of operating expenses into long-term cost savings that can go back into the programs and services that matter most.

GOING SOLAR IS AN EASY DECISION



Powering the mission

This project will reduce annual operating expenses, allowing City of Norman - Line Maintenance Building to better allocate needed resources toward their long-term mission and the community they serve.



Leading by example

With Brightwell's Energy Management Service Agreement (EMSA), you can purchase solar energy for less than your current utility rate—without the need for upfront investment. Simply sign the agreement, and start saving as soon as the system is installed.



Building sustainability

The Brightwell EMSA provides the option to purchase the solar system in the future, shifting even more savings back to City of Norman - Line Maintenance Building and increasing long-term financial benefits.

About the Solar Project

City of Norman - Line Maintenance Building

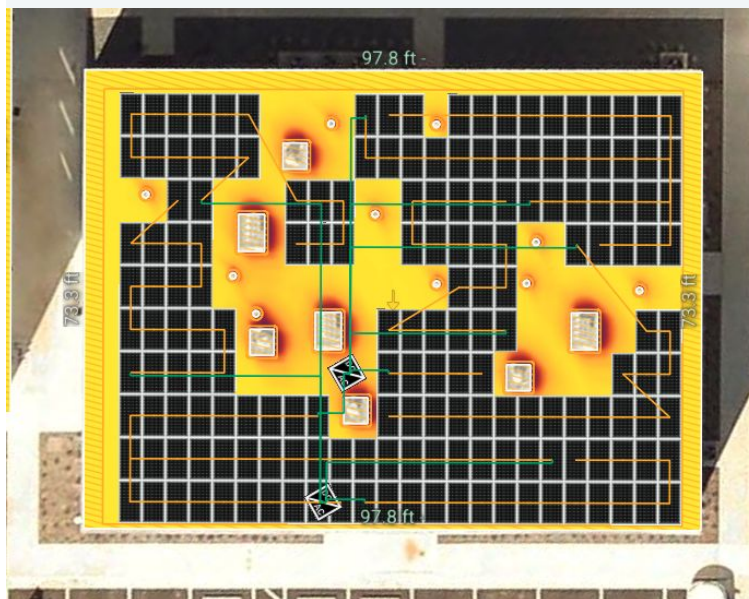
88 kW Solar PV System

Energy Offset	81%
---------------	-----

# of Solar Panels:	176
--------------------	-----

Annual Production:	121,136 kWh
--------------------	-------------

Carbon Reduction:	95 tons
-------------------	---------

**\$291,683****30-yr Energy Offset**

Energy cost offset without investing a dollar towards a solar system

3.63 GWh**Estimated 30-yr Energy Production**

Estimated energy kWh production from solar over the system's targeted lifecycle

5.68M**Total lbs CO₂ Offset (30-yr)**

Equivalent to carbon sequestered by 102 acres of U.S. forests in one year

**About the Solar Installer Partner**

EightTwenty and Brightwell combine decades of experience in solar design and installation, structural engineering, NABCEP-certified specialists, and tax incentives experts. We utilize only proven Bloomberg Tier-1 rated solar panels and system technologies backed by industry-leading product and performance guarantees. EightTwenty and Brightwell are committed to delivering best-in-class service that creates raving fans.



Project Analysis

Projected Cash Flow

YEAR	SAVINGS POST-SOLAR	EMSA	INSURANCE	ANNUAL CASH FLOW	CUMULATIVE CASH FLOW
2026	\$13,272	(\$11,945)	-	\$1,327	\$1,327
2027	\$13,776	(\$12,088)	-	\$1,688	\$3,015
2028	\$14,300	(\$12,233)	-	\$2,067	\$5,082
2029	\$14,843	(\$12,380)	-	\$2,463	\$7,545
2030	\$15,407	(\$12,528)	-	\$2,879	\$10,424
2031	\$15,992	(\$12,679)	-	\$3,313	\$13,737
2032	\$16,600	(\$12,831)	-	\$3,769	\$17,506
2033	\$17,231	(\$12,985)	-	\$4,246	\$21,752
2034	\$17,886	(\$13,141)	-	\$4,745	\$26,497
2035	\$18,565	(\$13,298)	-	\$5,267	\$31,764
2036	\$19,271	(\$13,458)	-	\$5,813	\$37,577
2037	\$20,003	(\$13,619)	-	\$6,384	\$43,961
2038	\$20,763	(\$13,783)	-	\$6,980	\$50,941
2039	\$21,552	(\$13,948)	-	\$7,604	\$58,545
2040	\$22,371	(\$14,116)	-	\$8,255	\$66,800
2041	\$23,221	(\$14,285)	-	\$8,936	\$75,736
2042	\$24,104	(\$14,456)	-	\$9,648	\$85,384
2043	\$25,020	(\$14,630)	-	\$10,390	\$95,774
2044	\$25,971	(\$14,805)	-	\$11,166	\$106,940
2045	\$26,957	(\$14,983)	-	\$11,974	\$118,914
2046	\$27,982	(\$15,163)	-	\$12,819	\$131,733
2047	\$29,045	(\$15,345)	-	\$13,700	\$145,433
2048	\$30,149	(\$15,529)	-	\$14,620	\$160,053
2049	\$31,294	(\$15,715)	-	\$15,579	\$175,632
2050	\$32,484	(\$15,904)	-	\$16,580	\$192,212
2051	\$33,718	(\$16,095)	-	\$17,623	\$209,835
2052	\$34,999	(\$16,288)	-	\$18,711	\$228,546
2053	\$36,329	(\$16,483)	-	\$19,846	\$248,392
2054	\$37,710	(\$16,681)	-	\$21,029	\$269,421
2055	\$39,143	(\$16,881)	-	\$22,262	\$291,683



Frequently Asked Questions

How does this affect our insurance?

When going solar, the impact investor maintains general liability, excess liability, and property liability insurance. Brightwell will provide a **Certificate of Insurance (COI)** to the organization, which can be shared with the organization's insurance carrier. If your roof has a claim, the deductible will cover the uninstall - reinstall cost.

Will this affect our roof?

When installing solar, we evaluate your roof to optimize installation. We work with the installer to limit penetrations and obtain a structural engineer's stamp. **This is backed by a 5-year craftsmanship warranty, alleviating any roof concerns.**

Who services the panels?

Solar panels require minimal maintenance. However, the **EMSA includes monitoring and an annual maintenance inspection** to keep the system in peak condition.

Does Brightwell have solar expertise?

Design & Installation—Brightwell ensures top-tier energy solutions with an in-house team of solar architects, installation teams, structural engineers, certified electricians, and NABCEP PVIP-certified professionals. The Brightwell team has experience installing over 20 MW of solar projects.

What happens in bad weather?

Solar panels undergo rigorous testing during the manufacturing process to ensure their durability and resilience in harsh conditions. This includes exposure to extreme temperatures, humidity, and other environmental stressors.

Hail Warranty—Panels typically have warranties that cover up to 1" hail at 51.6 mph.

What happens if our utility consumption is significantly reduced as a result of an emergency situation?

In addition to property insurance on the installed system, business interruption insurance will also be provided by the impact investor. This insurance helps cover costs that the organization would typically be responsible for if the system is down or the facility isn't operating under normal conditions. This insurance can assist in bridging gaps caused by an outage for periods ranging from one month to a maximum of one year.

What type of products does Brightwell use?

Brightwell focuses on top tier products that have the industries longest warranties to ensure our projects last for decades.

Tier 1 Designation. The bankable Tier 1 ranking is a classification system signifies a company is considered highly reliable and has a strong financial standing, making it more likely for banks to provide loans for projects using their panels. Ratings of solar companies as top-tier solar panel producers based on their financial strength and production capacity.

Industry Leading Warranties. The solar panels, inverters, and racking systems have best-in-class 25-year product warranties and 30-year panel performance warranties.