

# Context | GARAGE DOOR - Metal w/ Composite Trim



635 E BOYD

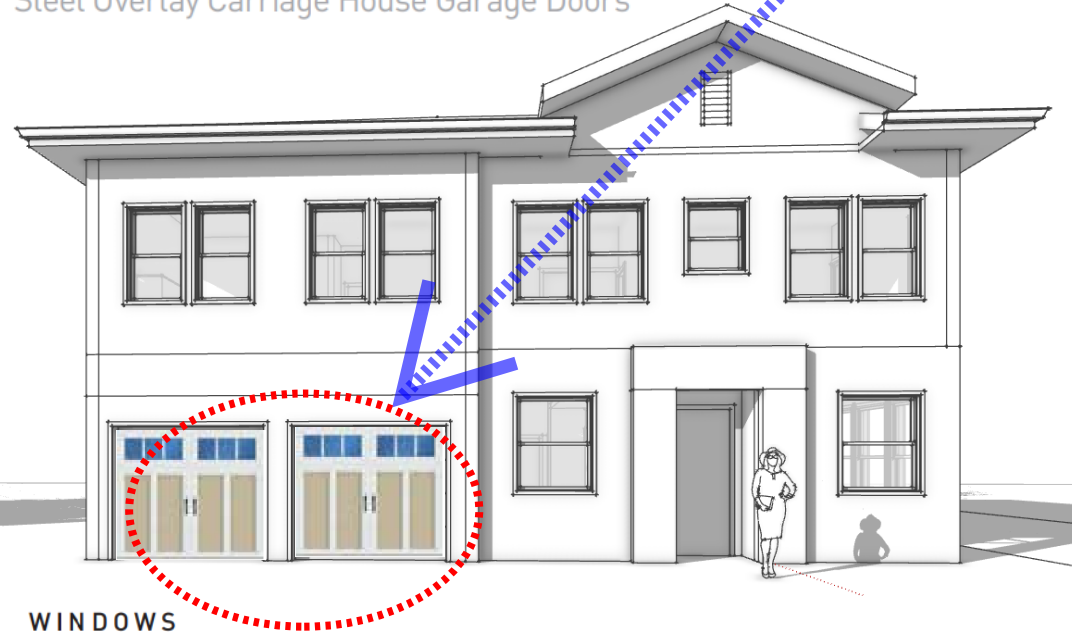


3 LITE SQUARE (PT106)

Door information: Two single doors

- Brand: **AMARR**
- Reference: **Carriage Court CC4000**
- Design: **3 Lite Square (PT106)**
- Type: **Short Raised Panel**
- Overlay trim: **5/8" Raised Composite Trim**
- Construction: **Metal structure**
- Glass: **Window inserts Top Row - Straight**
- Door Size: **8"x 7'** each door

**Amarr® Carriage Court CC4000**  
Steel Overlay Carriage House Garage Doors



WINDOWS

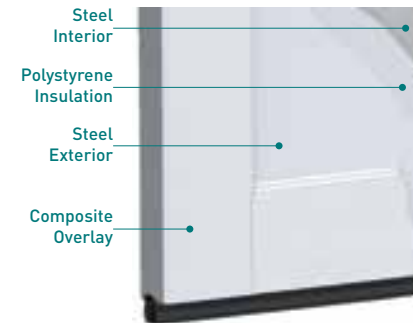


- Large rectangular or arched window designs in 24" top sections
- 5/8" thick decorative window grilles with square edges
- Available in Clear, Obscure<sup>‡</sup> or Insulated<sup>‡</sup> glass



## CONSTRUCTION

## Amarr Carriage Court CC4000



### Four-Layer: Overlay + Steel + Insulation + Steel

- 2" thick door with polystyrene insulation and steel interior
- Built with 1-3/8" steel section and 5/8" composite overlay trim

## OVERLAY TRIM



- 5/8" thick composite overlay trim of reclaimed wood fiber and thermoplastic polymer
- Coped edge design
- Sustainable, green building material
- Resists rot, decay, and fungal growth
- Won't flake, blister, peel, pit or corrode