

EXISTING WINDOWS WOULD BE REPLACED WITH COMPOSITE WINDOWS (ANDERSON FIBERGLASS WINDOWS) OR, IN THE ALTERNATIVE, ALUMINUM CLAD WINDOWS. ALL STORM WINDOWS WILL BE REMOVED — MANY OF WHICH ARE BROKEN.

THIS HOUSE IS A NON-CONTRIBUTING PROPERTY. WHILE GUIDELINES APPLY, THE GUIDELINES STATE: “FIBERGLASS AND ALUMINUM-CLAD WINDOWS CAN BE CONSIDERED ON NON-CONTRIBUTING RESOURCES...”

CURRENTLY NONE OF THE WINDOWS MATCH IN STYLE OR SIZE AND WERE APPARENTLY INSTALLED AT DIFFERENT TIMES.

THE WINDOWS WOULD BE REPLACED ON THE EAST (FRONT) AND NORTH (DUFFY SIDE) SIDES OF THE HOUSE.

THE ENCLOSED PORCH WINDOWS WOULD BE REPLACED WITH SINGLE HUNG WINDOWS SIMILAR IN SIZE TO EXISTING WINDOWS. WINDOWS THAT CURRENTLY DO NOT HAVE GRIDS WILL BE REPLACED WITH SINGLE HUNG WINDOWS WITH A SIX (6) ABOVE/ONE (1) BELOW GRID PATTERN. WINDOWS WITH EXISTING GRIDS WILL BE FAITHFULLY DUPLICATED WITH THE SAME GRID PATTERNS.

THE CURRENT WINDOWS ON THE ENCLOSED FRONT PORCH ARE OF DIFFERING SIZES AND STYLES. THE WINDOWS WOULD BE MADE UNIFORM IN HEIGHT AND STYLE.

THE WINDOWS THAT HAVE GRIDS CURRENTLY WILL BE FAITHFULLY REPLICATED.

THE WINDOWS THAT WERE INSTALLED IN THE ENCLOSED PORCH ON THE WEST SIDE (REAR) OF THE HOUSE ARE ALUMINUM CLAD WINDOWS WITH REMOVABLE UPPER GRIDS AND WILL REMAIN. SEE BELOW.



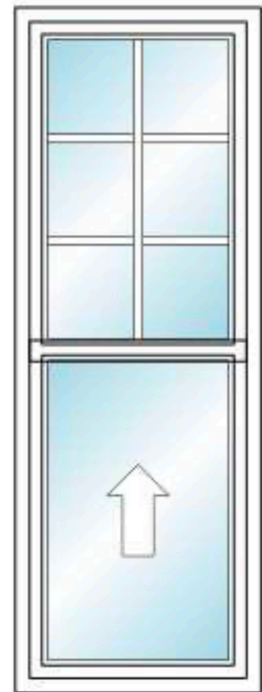
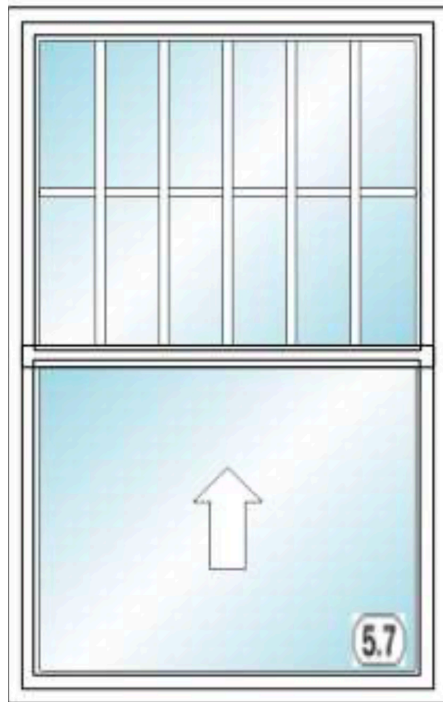
EAST SIDE OF HOUSE
(FRONT)



NORTH SIDE OF HOUSE
(DUFFY SIDE)

PICTURES OF EXISTING WINDOWS:

EAST SIDE (FRONT) BAY WINDOW



ENCLOSED PORCH WINDOWS EAST SIDE (FRONT).



WINDOWS WOULD BE REPLACED
WITH A SIX (6) ABOVE/ONE (1)
BELOW GRID PATTERN.

ENCLOSED PORCH WINDOWS NORTH AND WEST SIDE



ALL WINDOWS WOULD BE
REPLACED WITH A SIX (6) ABOVE/
ONE (1) BELOW GRID PATTERN AND
MADE THE SAME HEIGHT.

WEST SIDE



BAY WINDOW NORTH SIDE



THIS DRAWING IS ***INACCURATE*** REGARDING THE SIZE OF THE FRONT FACING BAY WINDOWS.



BAY WINDOWS WILL BE REPLACED WITH THE SAME STYLE AND SIZE WINDOWS INCLUDING THE SAME GRID PATTERNS.



WINDOW WOULD BE REPLACED WITH A SIX (6) ABOVE/ONE (1) BELOW GRID PATTERN

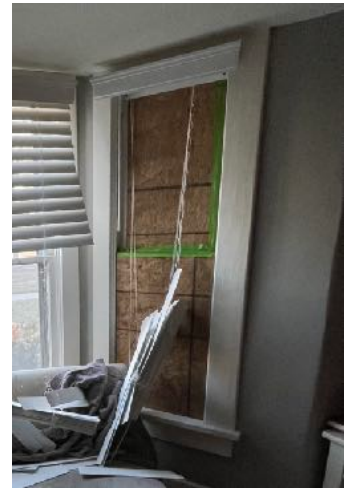


WINDOW WOULD BE REPLACED WITH A SIX (6) ABOVE/ONE (1) BELOW GRID PATTERN

ENCLOSED BACK PORCH WITH ALUMINUM CLAD WINDOWS WITH FAUX SIX (6) ABOVE/
ONE (1) BELOW GRID PATTERN:



SOME EXAMPLES OF THE BROKEN AND DAMAGED WINDOWS:



ALUMINUM CLAD OR FIBERGLASS (COMPOSITE) WINDOWS ON A NONN-CONTRIBUTING PROPERTY:



ANDERSON FIBERGLASS/COMPOSITE WINDOWS:



The Home Depot Special Order Quote

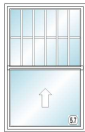
Customer Agreement #: H3906-215111
Printed Date: 8/14/2024

Customer: Address: Phone 1: Phone 2: Phone 3: Email: TENGWAR@ME.COM	Store: 3906 Associate: ROBERT Address: 850 Ed Noble Pkwy Norman, OK 73072 Phone: (405)579-7700	Pre-Savings Total: \$954.95 Total Savings: (\$143.25) Pre-Tax Price: \$811.70 Price Valid Through: 7/28/2024
--	--	--

All prices are subject to change. Customer is responsible for verifying product selections. The Home Depot will not accept returns for the below products.



Catalog Version 252



RO Size = 42" x 66"
Unit Size = 41 1/2" x 65 1/2"

Line Number	Item Summary	Room Location	Was Price	Now Price	Quantity	Total Savings	Total Price
100-1	100 Series Single-Hung Equal Sash, Fixed/Active, 41.5 x 65.5, White w/White Sash / Frame: White White, Auto Lock Hardware		\$954.95	\$811.70	1	(\$143.25)	\$811.70
Unit 100 Total:			\$954.95	\$811.70		(\$143.25)	\$811.70
Begin Line 100 Description							
---- Line 100-1 ----							
100 Series Single-Hung	Glass Option = Low-E SmartSun	Window Opening Control Device = No					
Overall Rough Opening = 42" x 66"	High Altitude Breather Tubes = No	Insect Screen Type = Half Screen					
Overall Unit = 41 1/2" x 65 1/2"	Glass Strength = Standard	Insect Screen Material = Fiberglass					
Installation Zip Code = 73072	Glass Tint = No Tint	Insect Screen Color = White					
U.S. ENERGY STAR® Climate Zone = South Central	Specialty Glass = None	Installation Material Options = No					
Enhanced Performance = No	Gas Fill = Argon	Re-Order Item = No					
Search by Unit Code = No	Glass / Grille Spacer Color = Stainless	Room Location =					
Standard Width = 100SH536XX - RO: 42" UNIT: 41 1/2"	Unit 1 Lower Glass: None	Unit U-Factor = 0.29					
Standard Height = XX56 - RO: 66" UNIT: 65 1/2"	Unit 1 Upper Glass: Simulated Divided Light (SDL)	Unit Solar Heat Gain Coefficient (SHGC) = 0.19					
Frame Width = 41 1/2"	Unit 1 Upper Glass: Specified Equal Light	Unit CPD Number = AND-N-80-02058-00002					
Frame Height = 65 1/2"	Unit 1 Upper Glass: Grille Pattern = Specified Equal Light	U.S. ENERGY STAR® Certified = No					
Unit Code = 100SH53656	Unit 1 Upper Glass: Simulated Check Rail = No	Clear Opening Width = 38					
Frame Option = 1 3/8" Setback	Unit 1 Upper Glass: Grille Bar Width = 3/4"	Clear Opening Height = 29.0625					
Venting / Handing = Fixed/Active	Unit 1 Upper Glass: Exterior Grille Color = White	Clear Opening Area = 7.66					
Drywall Access = No	Unit 1 Upper Glass: Interior Grille Color = White	SKU = 1008729623					
Exterior Frame Color = White	Unit 1 Upper Glass: 6W2H	Vendor Name = S/O ANDERSEN LOGISTICS					
Exterior Sash / Panel Color = White	Hardware Style = Auto Lock	Vendor Number = 60509030					
Interior Frame Finish Color = White	Lock Hardware Style = Andersen 100 Series	Customer Service = (888) 888-7020					
Interior Sash / Panel Finish Color = White	Number of Sash Locks = 1	Catalog Version Date = 04/22/2024					
Glass Construction Type = Dual Pane	Lock Hardware Color/Finish = White	SKU Description = S/O 100S SINGLEHUNG/GLIDING WINDOW					



The Home Depot Special Order Quote

Customer Agreement #: H3906-208219
Printed Date: 8/14/2024

Customer: WILLIAM HAUSER
Address: 904 Classen Blvd
Norman, OK 73071
Phone 1: 405-473-6388
Phone 2:
Phone 3: 405-473-6388
Email: tengwar@me.com

Store: 3906
Associate: ROBERT
Address: 850 Ed Noble Pkwy
Norman, OK 73072
Phone: (405)579-7700

Pre-Savings Total: \$1,335.98
Total Savings: (\$200.22)
Pre-Tax Price: \$1,135.76
Price Valid Through:
4/28/2024

All prices are subject to change. Customer is responsible for verifying product selections. The Home Depot will not accept returns for the below products.



Catalog Version 247



RO Size = 24" x 66"
Unit Size = 23 1/2" x 65 1/2"

Line Number	Item Summary	Room Location	Was Price	Now Price	Quantity	Total Savings	Total Price
100-1	100 Series Single-Hung Equal Sash, Fixed/Active, Rough Opening 24 x 66, 23.5 x 65.5, White w/White Sash / Frame: White White, Auto Lock Hardware		\$667.99	\$567.88	2	(\$200.22)	\$1,135.76
Unit 100 Total:			\$667.99	\$567.88		(\$200.22)	\$1,135.76

Begin Line 100 Description

---- Line 100-1 ----

100 Series Single-Hung
Overall Rough Opening = 24" x 66"
Overall Unit = 23 1/2" x 65 1/2"
Installation Zip Code = 73071
U.S. ENERGY STAR® Climate Zone = South Central
Enhanced Performance = No
Search by Unit Code = No
Standard Width = 100SHS20XX - RO: 24" | UNIT: 23 1/2"
Standard Height = XX56 - RO: 66" | UNIT: 65 1/2"
Frame Width = 23 1/2"
Frame Height = 65 1/2"
Unit Code = 100SHS2056
Frame Option = 1 3/8" Setback
Venting / Handing = Fixed/Active
Drywall Access = No
Exterior Frame Color = White
Exterior Sash / Panel Color = White
Interior Frame Finish Color = White
Interior Sash / Panel Finish Color = White
Glass Construction Type = Dual Pane

Glass Option = Low-E SmartSun
High Altitude Breather Tubes = No
Glass Strength = Standard
Glass Tint = No Tint
Specialty Glass = None
Gas Fill = Argon
Glass / Grille Spacer Color = Stainless
Unit 1 Lower Glass: None
Unit 1 Upper Glass: Simulated Divided Light (SDL)
Unit 1 Upper Glass: Specified Equal Light
Unit 1 Upper Glass: Grille Pattern = Specified Equal Light
Unit 1 Upper Glass: Simulated Check Rail = No
Unit 1 Upper Glass: Grille Bar Width = 3/4"
Unit 1 Upper Glass: Exterior Grille Color = White
Unit 1 Upper Glass: Interior Grille Color = White
Unit 1 Upper Glass: 2W3H
Hardware Style = Auto Lock
Lock Hardware Style = Andersen 100 Series
Number of Sash Locks = 1
Lock Hardware Color/Finish = White

Window Opening Control Device = No
Insect Screen Type = Half Screen
Insect Screen Material = Fiberglass
Insect Screen Color = White
Installation Material Options = No
Re-Order Item = No
Room Location =
Unit U-Factor = 0.29
Unit Solar Heat Gain Coefficient (SHGC) = 0.19
Unit CPD Number = AND-N-80-02058-00002
U.S. ENERGY STAR® Certified = No
Clear Opening Width = 20
Clear Opening Height = 29.0625
Clear Opening Area = 4.03
SKU = 1008729623
Vendor Name = S/O ANDERSEN LOGISTICS
Vendor Number = 60509030
Customer Service = (888) 888-7020
Catalog Version Date = 01/31/2024
SKU Description = S/O 100S SINGLEHUNG/GLIDING WINDOW