

Streetscape Designs for Different Commercial Districts

**Community Planning & Transportation
Committee**

January 22, 2026

Tim Miles, City Engineer & Megan Phelan, Park Planner



Streetscape: Complete Streets



Streetscape: Sidewalk Zones



Streetscape: Human Scale



Examples of Recent Streetscape Projects



Gray Street 2-Way



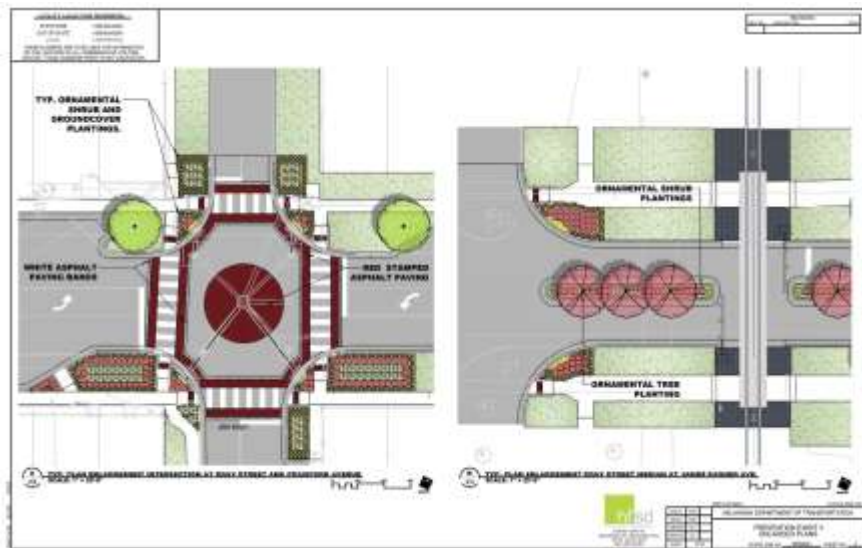
Porter Avenue
Streetscape



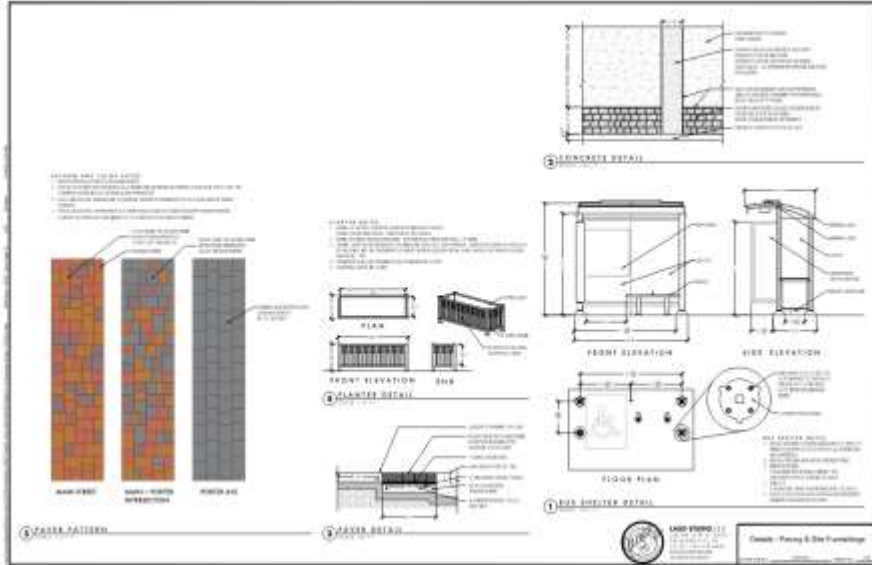
Main Street Median
Maintenance Project

The median located west of Hal Muldrow Drive

Gray Street 2 way Streetscape



Porter Avenue Streetscape



Main Street Median Maintenance Project

- Use native plants that are heat and drought tolerant and are low water use varieties.
- Use boulders and stone mulch for a more durable landscape with no mowing needed.



Streetscape Plantings

- Use native plants that are drought tolerant, low water use and pollinator friendly.
- Use shrubs, grasses, and perennials instead of Bermuda grass to reduce mowing and herbicide use.
- Community buy in for maintenance and care.



Streetscape Plantings along Porter Avenue using native plants.

Street Tree Ordinance

Street Tree Ordinance is in development.

- Historical Tree District to preserve the tree canopy.
- Promote and maintain street trees.
- Establish a Commercial Tree District.

Street tree located
on Main Street
in downtown Norman



Inspiration for Streetscape Designs



National Landing Streetscape
Arlington, Virginia
Hoerr Schaudt Landscape Architects

Inspiration for Streetscape Designs



Rye Street Park Streetscape, Arlington, Virginia
Hoerr Schaudt Landscape Architects

Inspiration for Streetscape Designs



Project 180 Streetscape
Oklahoma City, OK
OJB Landscape Architects

Inspiration for Streetscape Designs



Hudson Street Streetscape
New York City, NY
MNLA Landscape Architects

Funding Future Streetscape Improvements

- Dedicated Capital Funding
- Norman Forward II
- Transportation Bond
- Private Partnerships
- Grants
- TIF Districts



QUESTIONS COMMENTS

