

Public Utility Easement

A part of ORIGINAL TOWNSITE OF NORMAN, RECORD BOOK 1 OF PLATS, PAGE 27, more particularly described as follows:

COMMENCING (POC) at the Southeast Corner of Lot 16, BLOCK 19 of said ORIGINAL TOWNSITE OF NORMAN;

THENCE S62°22'14"W a distance of 16.00 feet along the South Line of Lot 16 and said point being the POINT OF BEGINNING (POB);

THENCE leaving said South Line S27°37'46"E a distance of 10.00 feet;

THENCE S62°22'14"W a distance of 127.91 feet to a point of curve;

THENCE on a curve to the left having a radius of 42.00 feet, a chord bearing N86°32'44"W a distance of 19.37 feet, a central angle bearing 26°39'45", and an arc length of 19.54 feet to a point on the South Line of Lot 10, BLOCK 19;

THENCE N62°22'14"E a distance of 144.50 feet along the South Lines of Lots 10, 11, 12, 13, 14, 15, and 16 to the POB;

Said parcel containing 1348 square feet or 0.03 acres more or less.

Bearings and Distances are GRID - Oklahoma State Plane - South Zone

SURVEYOR'S CERTIFICATE

I, Paul E. Davis of Garver, LLC, certify that the legal description herein closes in accordance with current tolerances and is a true representation of the real property described, and that the legal description of real property meets the minimum technical standards as adopted by the Board of Registration for Professional Engineers and Land Surveyors for the State of Oklahoma.

Witness my hand and seal this 12th day of March, 2024.

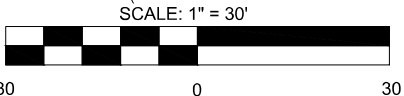
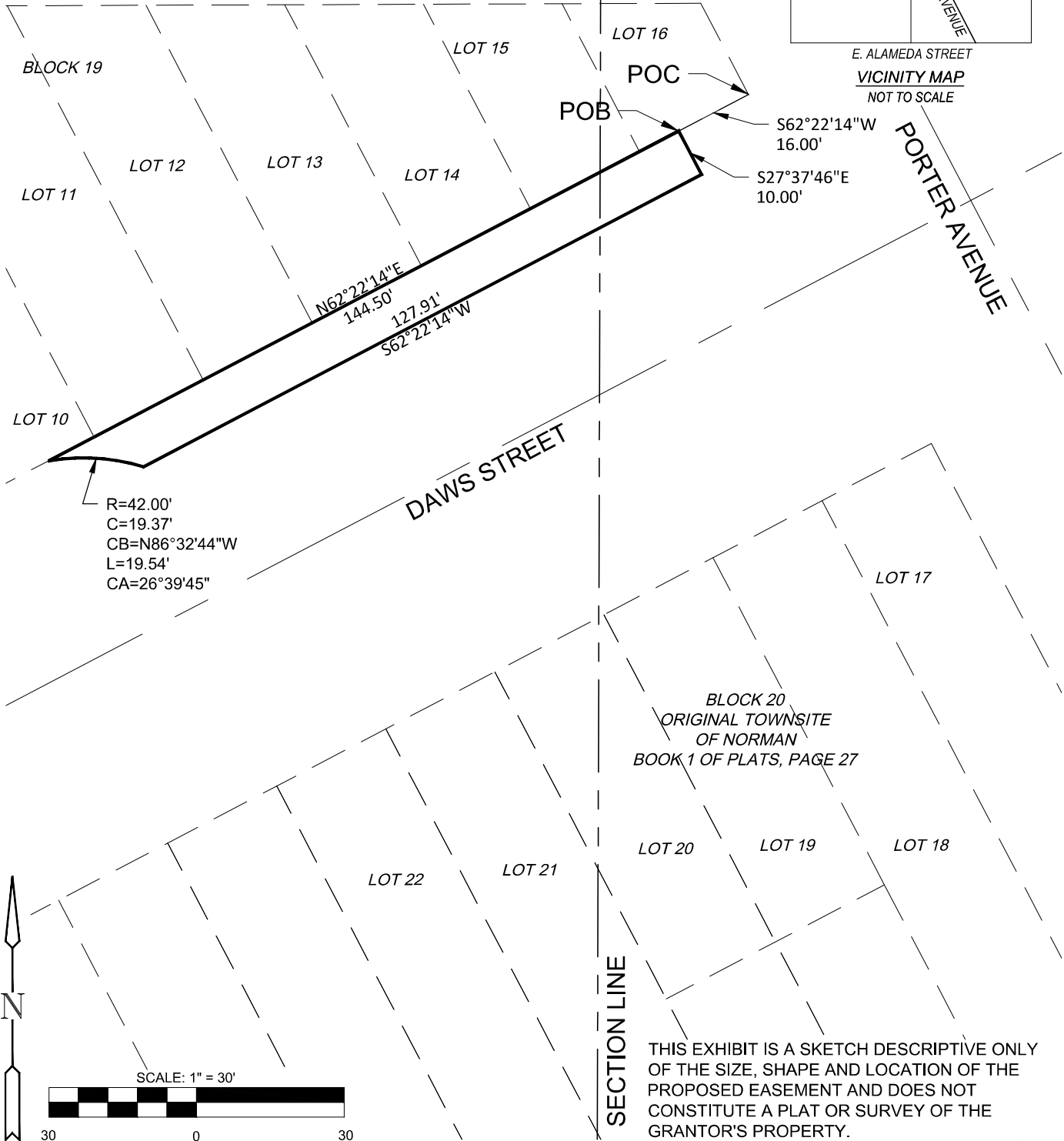
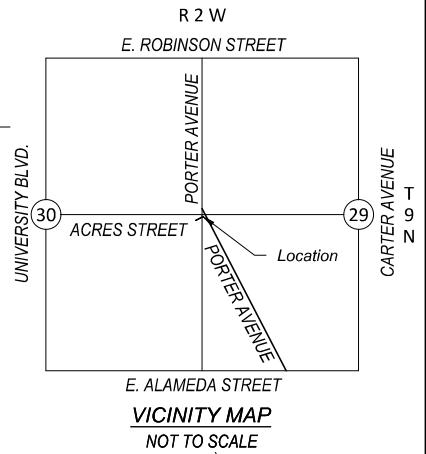
Paul E. Davis, PLS  
Oklahoma No. 1565  
Cert. of Auth. 4193  
Exp. Date June 30, 2024



© 2024 GARVER, LLC - THIS DOCUMENT, ALONG WITH THE IDEAS AND DESIGNS CONVEYED HEREIN, SHALL BE CONSIDERED INSTRUMENTS OF PROFESSIONAL SERVICE AND ARE PROPERTY OF GARVER, LLC. ANY USE, REPRODUCTION, OR DISTRIBUTION OF THIS DOCUMENT, ALONG WITH THE IDEAS AND DESIGN CONTAINED HEREIN, IS PROHIBITED UNLESS AUTHORIZED IN WRITING BY GARVER, LLC OR EXPLICITLY ALLOWED IN THE GOVERNING PROFESSIONAL SERVICES AGREEMENT FOR THIS WORK.

 <p>750 SW 24th Street, Suite 200 Moore, OK 73160 405.329.2555</p>	<p>CITY OF NORMAN NORMAN, OKLAHOMA PORTER AND ACRES INTERSECTION IMPROVEMENTS</p>	<p>Public Utility Easement Legal Description</p>	<p>FIGURE NUMBER <b>CPUE1</b> SHEET NUMBER <b>1 of 2</b></p>
---	---	--	--

ACRES STREET



THIS EXHIBIT IS A SKETCH DESCRIPTIVE ONLY OF THE SIZE, SHAPE AND LOCATION OF THE PROPOSED EASEMENT AND DOES NOT CONSTITUTE A PLAT OR SURVEY OF THE GRANTOR'S PROPERTY.

© 2024 GARVER, LLC - THIS DOCUMENT, ALONG WITH THE IDEAS AND DESIGNS CONVEYED HEREIN, SHALL BE CONSIDERED INSTRUMENTS OF PROFESSIONAL SERVICE AND ARE PROPERTY OF GARVER, LLC. ANY USE, REPRODUCTION, OR DISTRIBUTION OF THIS DOCUMENT, ALONG WITH THE IDEAS AND DESIGN CONTAINED HEREIN, IS PROHIBITED UNLESS AUTHORIZED IN WRITING BY GARVER, LLC OR EXPLICITLY ALLOWED IN THE GOVERNING PROFESSIONAL SERVICES AGREEMENT FOR THIS WORK.

750 SW 24th Street, Suite 200  
Moore, OK 73160  
405.329.2555

CITY OF NORMAN  
NORMAN, OKLAHOMA  
PORTER AND ACRES  
INTERSECTION  
IMPROVEMENTS

Public Utility Easement  
Exhibit

FIGURE NUMBER  
**CPUE2**  
SHEET  
NUMBER **2 of 2**