

EXHIBIT "A"
 PLAT CORRECTION
 AS FILED

CPC-2425-1

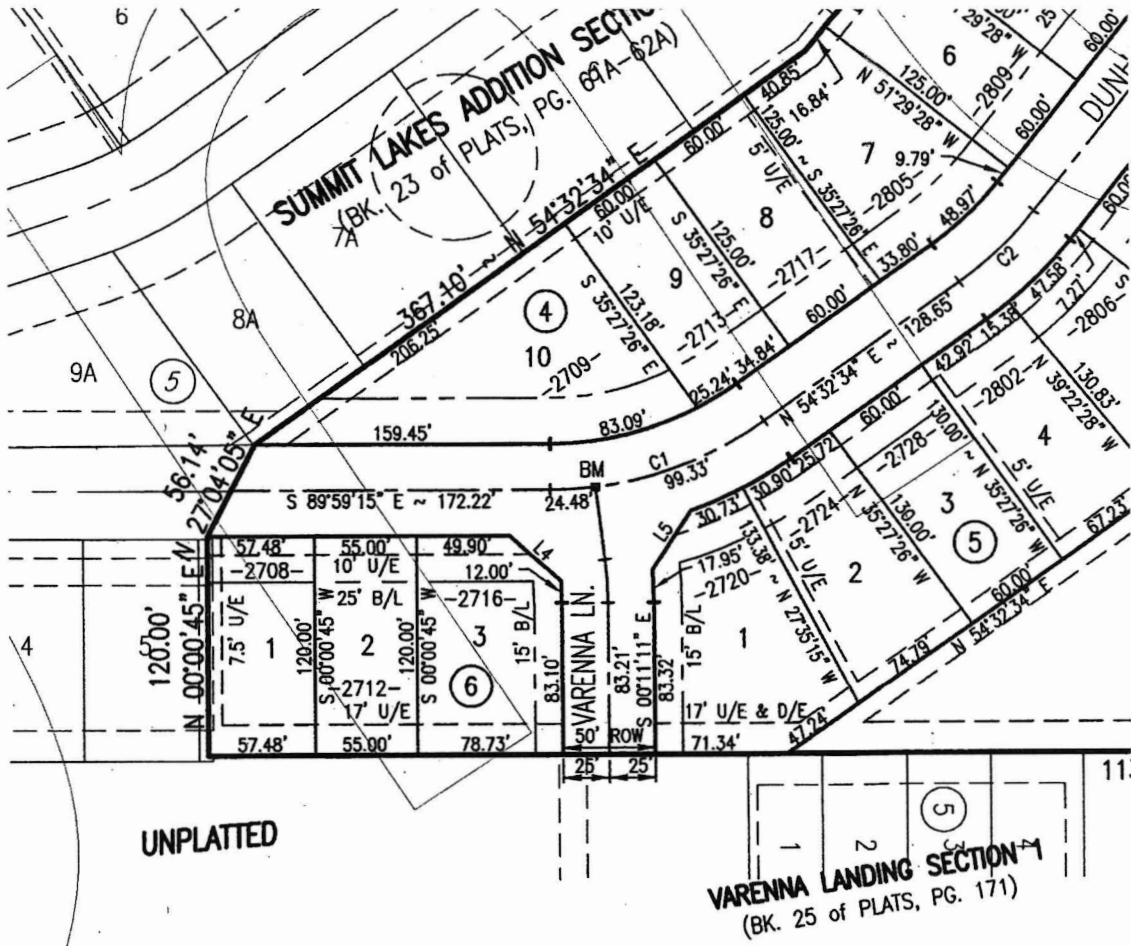
FINAL PLAT

SUMMIT LAKES ADDITION SECTION 12

A PART OF THE N.W. 1/4 & S.W. 1/4, SECTION 34, T9N, R2W, I.M.
 NORMAN, CLEVELAND COUNTY, OKLAHOMA

Doc # P2023-18 BT: P B: 26 P: 37 PL
 10/17/2023 01:36:37 PM Pages: 2

Cleveland County Clerk, OK - Tammy Belinson
 Fee: \$ 35.00



UNPLATTED

VARENNIA LANDING SECTION 11
 (BK. 25 of PLATS, PG. 171)

CURVE TABLE

CURVE	DELTA ANGLE	RADIUS	ARC LENGTH	TANGENT	CHORD BEARING	CHORD LENGTH
C1	35°28'11"	200.00'	123.81'	63.96'	N 72°16'39" E	121.85'
C2	16°02'02"	200.00'	55.97'	28.17'	N 46°31'33" E	55.79'
C3	38°43'09"	100.00'	67.58'	35.14'	N 19°08'57" E	66.30'
C4	61°47'13"	100.00'	107.84'	59.83'	N 31°00'23" W	102.69'
C5	15°32'01"	125.00'	33.89'	17.05'	S 82°13'59" W	33.79'
C6	15°25'14"	125.00'	33.64'	16.92'	N 82°10'36" E	33.54'
C7	13°21'47"	300.00'	69.97'	35.14'	S 83°25'53" E	69.81'
C8	41°50'59"	48.00'	35.06'	18.35'	S 82°19'31" W	34.29'
C9	263°41'58"	50.00'	230.12'	55.82'	S 13°15'00" W	74.49'
C10	41°50'59"	48.00'	35.06'	18.35'	S 55°49'31" E	34.29'
C11	56°56'39"	60.00'	59.63'	32.54'	N 28°21'33" E	57.21'
C12	236°49'07"	50.00'	206.66'	92.44'	S 61°34'41" E	87.96'

LINE TABLE

LINE	BEARING	DISTANCE
L1	S 45°12'37" E	35.36'
L2	N 44°47'23" E	35.36'
L3	S 00°12'37" E	39.83'
L4	N 45°05'13" W	35.42'
L5	S 36°57'48" W	39.85'
L6	N 89°53'13" E	25.00'
L7	N 48°48'42" E	15.00'

SCALE: 1" = 100'