

Bishop Creek Litter Boom Signage



©2021 All rights reserved

Bishop Creek WBP Background

- Watershed is 14 square miles (City is roughly 190 square miles)
- Runs 8 miles through central/urbanized Norman
- Over 61% of the watershed has been developed
- History of impairments for fish bioassessment and benthic macroinvertebrate assessments back to 2014
- Accepted by EPA in April 2023



bit.ly/BishopCreek



Bishop Creek WBP Background

- Strong community involvement in watershed
 - Friends of Bishop Creek
 - Red Dirt Collective
 - Sierra Club-pollinator garden
 - Frequent watershed clean-ups
 - Upcoming nature park



Bishop Creek WBP Goals

- Improving the riparian area along Bishop Creek.
- Reducing the amount of trash that reaches Bishop Creek. ←
- Increasing water infiltration in the watershed.
- Reducing the amount of bacteria from domestic pets reaching the stream.
- Collect dissolved oxygen and E. coli data to determine beneficial use support status for these parameters.

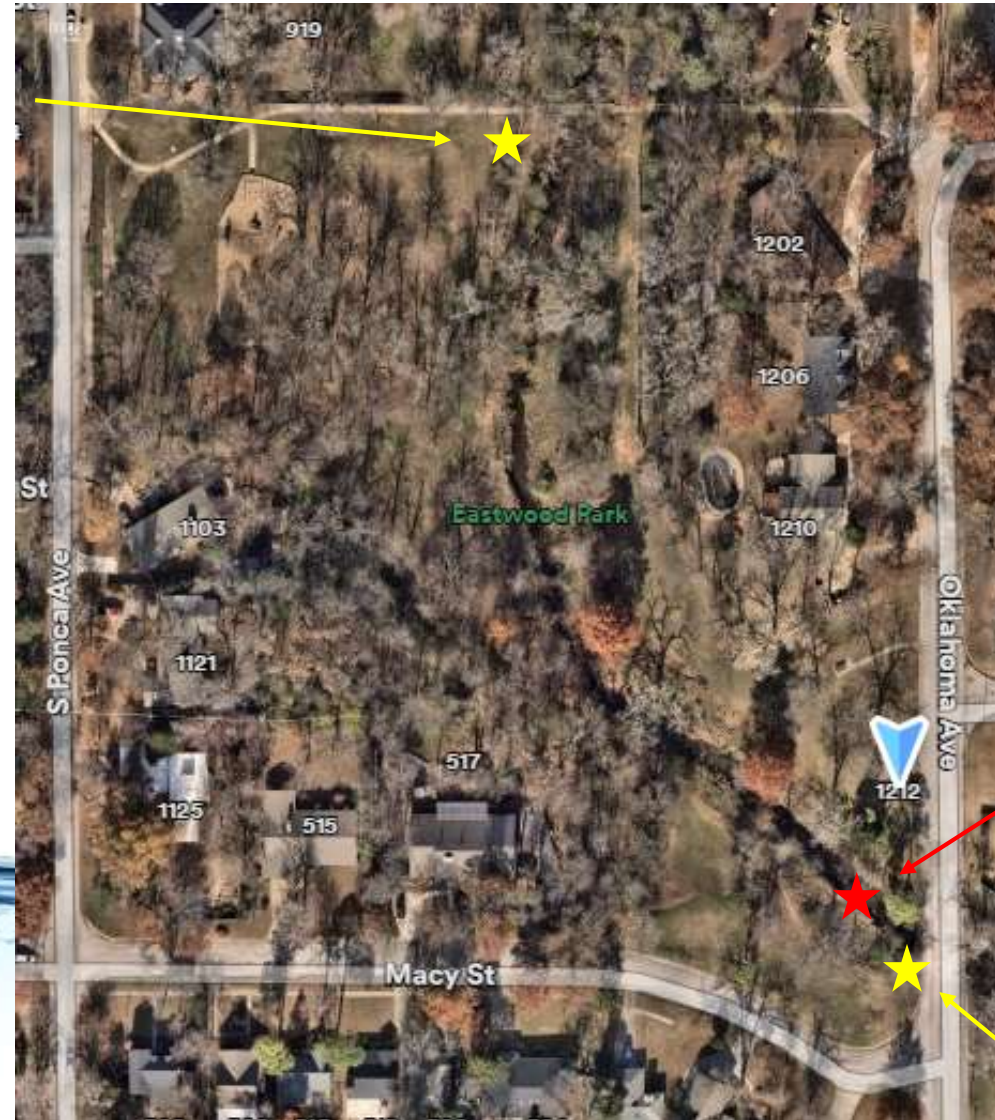
Bishop Creek WBP BMPs

- Establishing no-mow zones
- Installing pet waste stations
- Watershed clean-up events (installing litter boom and signage) ←
- Participating in educational events (Earth Day Festival and Monarchs in the Park)
- Watershed pledge
- Yard x Yard (www.okconservation.org/yard-by-yard-grounds-by-grounds)



Location

Option 1: located next to existing no-mow signage (preferred)



Location of litter boom

Option 2: located near corner of Oklahoma Ave and Macy St

Design

Proposed 12"x24"
sign w/ single post

Examples of 24"x36" double
post signs in William Morgan
Park and Prairie Creek Park



BISHOP CREEK WATERSHED

Bishop Creek and its watershed is 14 square miles and the main stem of the creek runs almost 8 miles through central Norman! Over 61% of the watershed has been developed. The increase in impervious surfaces (such as roads, driveways, roofs, and parking lots) leads to:

- decreased infiltration,
- increased runoff,
- increased flashiness (high flows), and
- impaired stream bank vegetation.

WATER QUALITY IMPAIRMENTS

Bishop Creek is impaired for benthic macroinvertebrates (bugs!) and fishes. That means there are fewer, and sometimes different, species of bugs and fish than would be observed in a healthy stream. While the causes have not been identified, this is generally a result of poor habitat conditions.



LITTER BOOM

Litter can clog waterways causing water to stagnate leading to low oxygen levels which are harmful to wildlife. Fish and bugs can also become trapped in trash or mistake it for food. A litter boom is a floating barrier designed to catch litter and prevent it from floating downstream. Our litter boom is installed near Oklahoma Ave. and Macy St.



HOW CAN YOU HELP?

Follow these simple steps to protect Bishop Creek and improve aquatic habitat.

- If you live next to the creek or waterway, establish a "no-mow" zone around the water's edge.
- Pick up trash around your home, neighborhood, and the creek.
- Reduce runoff from your home by using a rain barrel or planting a rain garden.
- Always follow the label when applying chemicals such as pesticides, herbicides, fertilizers, etc. Only use what you need!
- Keep leaves and grass clippings out of our storm drains and creeks.
- Be sure to pick up pet waste from your yard and while on walks.



Photograph courtesy of J. Chapman Photography



OSPREY
INITIATIVE

Learn more about Bishop Creek at:
bit.ly/BishopCreek



SCAN ME!



DOERS

Funding, Installation & Maintenance

- Materials to be purchase by Stormwater Quality (eligible for reimbursement through Oklahoma Conservation Commission)
- Sign will be installed by Stormwater Maintenance crews
- Sign will be monitored by Blue Thumb volunteers and maintained by City staff



Questions?

