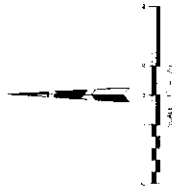
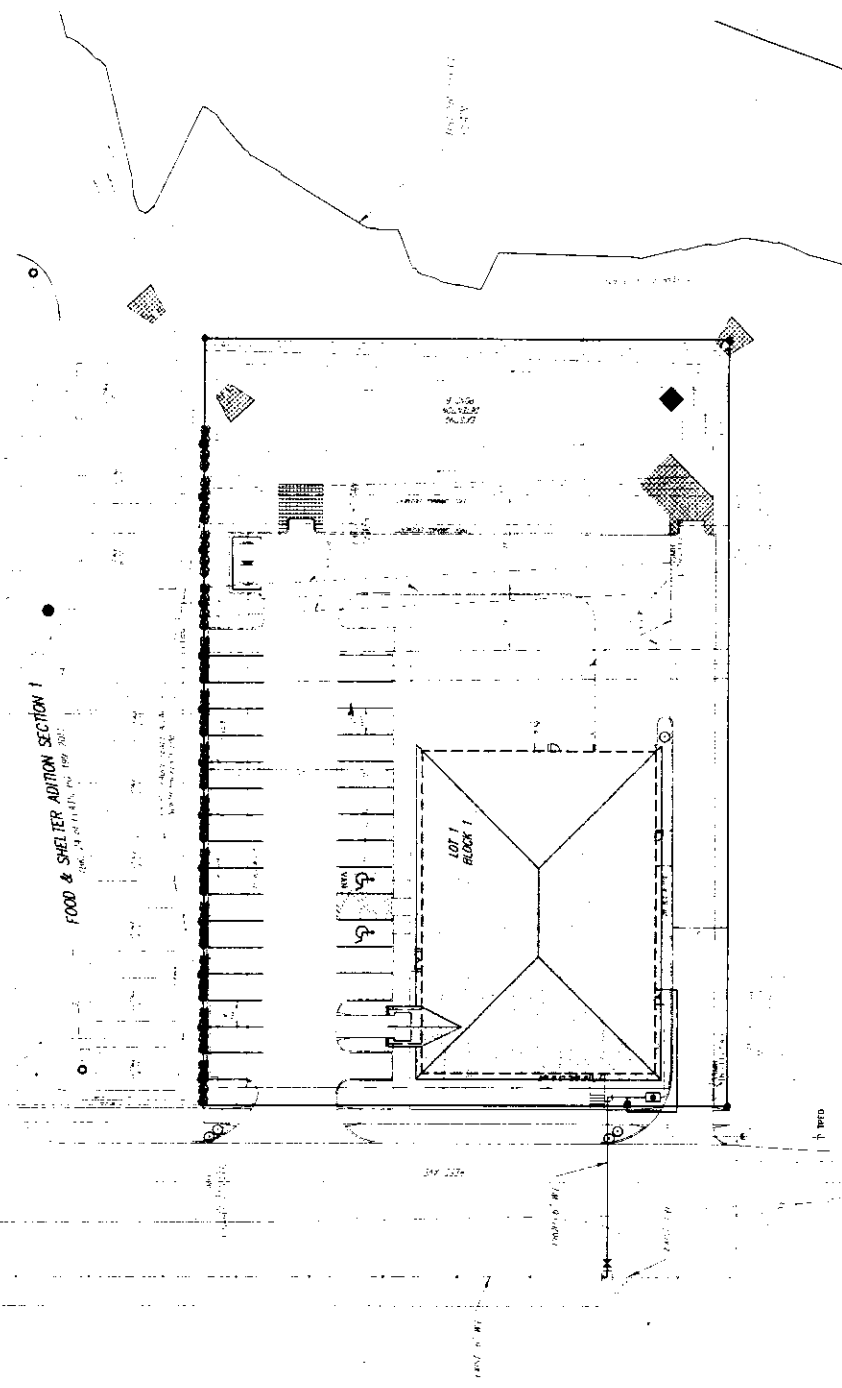
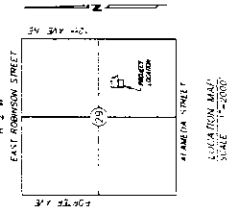


FINAL SITE DEVELOPMENT PLAN

**FOOD AND SHELTER ADDITION SECTION 2**  
A PART OF THE S.E. 1/4, SECTION 29, T9N, R2W, I.M.  
NORMAN, CLEVELAND COUNTY, OKLAHOMA



FOOD AND SHELTER  
ADDITION SECTION 2

MAIN STREET & REED AVE.  
NORMAN, OKLAHOMA

**SMC**  
SMC Consulting Engineers, P.C.  
1000 N. W. 10th St., Suite 100  
Norman, Oklahoma 73061  
Phone: (405) 821-1111  
Fax: (405) 821-1112  
www.smc-engineers.com

DATE: 11/11/10  
SCALE: AS SHOWN  
PROJECT: FOOD AND SHELTER ADDITION SECTION 2  
DRAWN BY: J. HARRIS  
CHECKED BY: J. HARRIS  
FINAL SITE DEVELOPMENT PLAN