

INVENTORY OF GOODS TO BE AUCTIONED

Department Public Works / Traffic Control

Signature *[Handwritten Signature]*

Reviewed by Accounting *[Handwritten Signature]*

Condition	Item and Year	Detailed Description	Serial Number	City Unit No.
Fair	Traffic Signal Equip. / N/A	89 each Single Channel IR Pre-Emption Detector	N/A	
Fair	Traffic Signal Equip. / N/A	27 each Dual Channel IR Pre-Emption Detector	N/A	
Poor	Traffic Signal Equip. / 2011	Tesco Battery Backup Cabinet	8Z-831185	
Poor	Traffic Signal Equip. / N/A	Solo Pro Video Detection Camera	025375	
Poor	Traffic Signal Equip. / N/A	Solo Pro Video Detection Camera	023797	
Poor	Traffic Signal Equip. / N/A	Solo Pro Video Detection Camera	025330	
Poor	Traffic Signal Equip. / N/A	Solo Pro Video Detection Camera	023816	
Poor	Traffic Signal Equip. / N/A	Solo Pro Video Detection Camera	023813	
Poor	Traffic Signal Equip. / N/A	Solo Pro Video Detection Camera	027178	
Poor	Traffic Signal Equip. / N/A	Solo Pro Video Detection Camera	030688	
Poor	Traffic Signal Equip. / N/A	Solo Pro Video Detection Camera	030676	
Poor	Traffic Signal Equip. / N/A	Solo Pro Video Detection Camera	023811	
Poor	Traffic Signal Equip. / N/A	Solo Pro Video Detection Camera	023801	
Poor	Traffic Signal Equip. / N/A	Solo Pro Video Detection Camera	005759	
Poor	Traffic Signal Equip. / N/A	Solo Pro Video Detection Camera	009464	
Poor	Traffic Signal Equip. / N/A	Solo Pro Video Detection Camera	005137	
Poor	Traffic Signal Equip./ 2013	Lighted Crosswalk System	8059000	
Poor	Traffic Signal Equip./ 2011	Tesco Battery Backup Cabinet	8Z-831186	
Poor	Traffic Signal Equip./ 2003	Econolite Traffic Signal Cabinet	2283-63-001	
Poor	Traffic Signal Equip./ 2007	Tesco Battery Backup Cabinet	8R-238024	
Poor	Traffic Signal Equip./ 2010	Econolite Traffic Signal Cabinet	17-3694-002	
Poor	Traffic Signal Equip./ 2006	Econolite Traffic Signal Cabinet	17-2913-002	
Poor	Traffic Signal Equip./ 2007	Tesco Battery Backup Cabinet	8R-238019	
Poor	Traffic Signal Equip./ 1994	Econolite Traffic Signal Cabinet	2318-63-003	
Poor	Traffic Signal Equip./ 2004	Tesco Battery Backup Cabinet	8F-884037	
Poor	Traffic Signal Equip./ 2011	Tesco Battery Backup Cabinet	8Z-831177	
Poor	Traffic Signal Equip./ 1994	Econolite Traffic Signal Cabinet	1226-10-001-1	
Poor	Traffic Signal Equip./ 2006	Econolite Traffic Signal Cabinet	17-2701-002	

INVENTORY OF GOODS TO BE AUCTIONED

Department

I.T.

Signature

Fred Wade

Reviewed by Accounting

Fred Wade

Condition	Item and Year	Detailed Description	Serial Number	City Unit No.
Poor	2018 ProDuplicator	PD Multi-DVD Burner	X000ANIJIN 11292017	
Poor	2018 24" MONITOR	HP 24" MONITOR	6CM8011R9J	
Poor	2016 DESKTOP	HP ELITEDESK 800	2UA6312PP8	
Poor	2016 24" MONITOR	HP 24" MONITOR		
Poor	2016 DESKTOP	HP Z230 DESKTOP	2UA5361B1Z	
Poor	2016 DESKTOP	HP Z230 DESKTOP	2UA6031Z5X	
Poor	2016 DESKTOP	HP Z230 DESKTOP	2UA5471YHP	
Poor	2016 DESKTOP	HP Z230 DESKTOP	2UA5341PQY	
Poor	2016 DESKTOP	HP ELITEDESK 800	2UA53326R3	
Poor	2016 DESKTOP	HP Z230 DESKTOP	2UA4350ZC5	
Poor	2016 DESKTOP	HP Z230 DESKTOP	2UA5471X82	
Poor	MONITOR	DELL FLAT PANEL 32	JQKWX83	
Poor	LAPTOP	PANASONIC CF-53	4ITTYA40100	
Poor	LAPTOP	FUJITSU T726	R6X01957	
Poor	LAPTOP	HP COMPAQ NW9440	CND6372SS7	
Poor	LAPTOP	PANASONIC CF-53	4KTYA63149	
Poor	LAPTOP	PANASONIC CF-53	4KTYA62960	
Poor	LAPTOP	PANASONIC CF-53	6HTSA82108	
Poor	LAPTOP	HP ZBOOK 15	5CG53946VS	
Poor	LAPTOP	HP ZBOOK 15	5CG543599P	
Poor	LAPTOP	HP ZBOOK 15	5CG5415510	
Poor	LAPTOP	PANASONIC CF-31	2DTYA65078	
Poor	LAPTOP	FUJITSU T726	R6XD1948	
Poor	LAPTOP	PANASONIC CF-52	9CTYA51386	
Poor	MONITOR	HP 27 MONITOR	6CM6200D0B	
Poor	MONITOR	HP MONITOR	111222L02031161	

Poor	MONITOR	HP 23 MONITOR	3CQ5221LBH	
Poor	MONITOR	HP 23 MONITOR	3CQ5250LDZ	
Poor	MONITOR	HP MONITOR	111206L0202821	
Poor	MONITOR	HP 23 MONITOR	3CQ4332QQV	
Poor	MONITOR	HP 23 MONITOR	3CQ4231447	
Poor	MONITOR	HP 23 MONITOR	3CQ4043581	
Poor	MONITOR	HP MONITOR	111206L0202812	
Poor	MONITOR	HP MONITOR	CNT734Q5C1	
Poor	MONITOR	DELL FLAT PANEL 27	9W5HOP3	
Poor	MONITOR	VIZIO	LTTX00CP1900050	
Poor	MONITOR	HP 23 MONITOR	3CQ5250LFH	
Poor	MONITOR	HP 23 MONITOR	3CQ3520NMT	
Poor	MONITOR	HP 19 MONITOR	CN4929064Q	
Poor	LAPTOP	PANASONIC CF-31	2DTYA64787	
Poor	DESKTOP	HP MINI G2	2UA5332QLH	
Poor	DESKTOP	HP MINI G2	2UA5431Y42	
Poor	DESKTOP	HP MINI G2	2UA54826ZM	
Poor	DESKTOP	HP MINI G2	2UA5332CLD	
Poor	DESKTOP	HP MINI G2	2UA6431Y43	
Poor	DESKTOP	HP MINI G2	2UA5332CLF	
Poor	DESKTOP	HP MINI G2	2UA53326R3	
Poor	DESKTOP	HP MINI G2	2UA6312PP8	
Poor	DESKTOP	HP MINI G2	2UA6431Y44	
Poor	DESKTOP	HP MINI G2	2UA32312VF	
Poor	DESKTOP	Z220	2UA32312V8	
Poor	DESKTOP	Z220	2UA32312V7	
Poor	DESKTOP	Z220	2UA52820SK	
Poor	DESKTOP	Z230	2UA4100G4P	
Poor	DESKTOP	Z230	2UA5471X82	
Poor	DESKTOP	Z230	2UA3382HWP	
Poor	DESKTOP	Z230	2UA32312VB	
Poor	DESKTOP	Z230	2UA6031Z5X	
Poor	DESKTOP	Z230	2UA4350S32	
Poor	DESKTOP	Z230	2UA5341POV	

Poor	DESKTOP	Z230	2UA4350ZC5	
Poor	DESKTOP	Z230	2UA43416DQ	
Poor	DESKTOP	Z230	2UA5471X81	
Poor	DESKTOP	Z240	2UA6291VRS	
Poor	DESKTOP	Z230	2UA6161TFQ	
Poor	DESKTOP	Z230	2UA4281Q9D	
Poor	DESKTOP	Z230	2UA6341MY4	
Poor	DESKTOP	Z230	2UA5471YHP	
Poor	DESKTOP	Z230	2UA5361B1Z	
Poor	DESKTOP	HP MINI G3	2UA80219ZZ	
Poor	DESKTOP	HP MINI G3	2UA80219Z2	
Poor	DESKTOP	HP MINI G3	2UA80219ZY	
Poor	DESKTOP	HP MINI G3	2UA8021B06	
Poor	DESKTOP	HP MINI G3	2UA80219Z5	
Poor	DESKTOP	Z230	2UA32312VJ	
Poor	DESKTOP	Z230	2UA32312VK	
Poor	DESKTOP	Z230	2UA32312VD	
Poor	DESKTOP	Z230	2UA53929WF	
Poor	DESKTOP	Z230	2UA5511C1L	
Poor	DESKTOP	Z230	2UA4100FRL	
Poor	DESKTOP	Z230	2UA406054T	
Poor	DESKTOP	Z230	2UA53929XX	
Poor	DESKTOP	Z230	2UA32312VG	
Poor	MONITOR	DELL 27 MONITOR	6CM7360MMW	
Poor	DESKTOP	HP MINI G3	2UA80219ZX	
Poor	MONITOR	HP 23 MONITOR	3CQ5300MV3	
Poor	MONITOR	HP 23 MONITOR	3CQ5221KH4	
Poor	MONITOR	HP 19 MONITOR	3CQ5221KH4	
Poor	MONITOR	DELL 27 MONITOR	6CM7370CNT	
Poor	MONITOR	HP 24 MONITOR	6CM613013P	
Poor	MONITOR	HP 19 MONITOR	CN49290228	
Poor	MONITOR	DELL 27 MONITOR	6CM8011R9J	
Poor	MONITOR	HP 23 MONITOR	3CQ3131JTP	
Poor	ACCESS POINT	CISCO EXPRESS	KWC211000H0	

Poor	DESKTOP	HP MINI G2	2UA53326R6	
Poor	DESKTOP	HP MINI G2	2UA543213D	
Poor	DESKTOP	HP MINI G2	2UA53326RK	
Poor	DESKTOP	HP MINI G2	2UA5332CLG	
Poor	DESKTOP	HP MINI G2	2UA5391CR0	
Poor	DESKTOP	HP MINI G2	2UA53326RC	
Poor	DESKTOP	HP MINI G2	2UA5391CS8	
Poor	DESKTOP	HP DESKTOP	2UA40922RX	
Poor	KVMSWITCH	STARTECH 8PORT	XXXXX056	
Poor	PRINTER	HP PRINTER 4700DN	JP4LB02873	
Poor	PRINTER	HP PRINTER OFFICEJET 7740	CN6C64501D	
Poor	PRINTER	HP PRINTER 600	CNCCF6V02B	
Poor	PRINTER	BROTHER MFC-7440N	U62063K0N648766	
Poor	PRINTER	HP PRINTER M479	CNCRP2873Z	
Poor	DESK PHONE	CISCO 8945	PUC174800LP	
Poor	DESK PHONE	CISCO 9951	(01)7898362232657	
Poor	DESK PHONE	CISCO 8945	PUC17450NNN	
Poor	DESK PHONE	CISCO 7821	WZP1746038Y	
Poor	DESK PHONE	CISCO 8945	PUC17450NNN	
Poor	SERVER	LENOVO SR630	J100ZP8L	
Poor	DESK PHONE	CISCO 7962	FCH141287A7	
Poor	PRINTER	HP PRINTER 402N	PHBHD79693	
Poor	DESK PHONE	CISCO 7861	WZP18320HPQ	
Poor	PROJECTOR	VIEWSONIC PX706HD	VB9182001005	
Poor	SCANNER	HP SCANJET 7000	CN7CFB604C	
Poor	SCANNER	CANON DR-M160II	GXY11179	
Poor	DESK PHONE	CISCO 8945	PUC174800U0	
Poor	DESK PHONE	CISCO 7821	WZP174603AD	
Poor	CARDREADER	VERIFONE VX520	324-197-926	
Poor	PRINTER	RECEIPT PRINTER	FD1000475418	
Poor	CARDREADER	VERIFONE VX520	324-197-920	
Poor	DESKTOP	AZULLC	20180833300	
Poor	DESKTOP	AZULLC	20180833297	
Poor	TABLET	PANASONIC FZ-G1	N/A	

CITY OF NORMAN
REPORT OF LOST/DAMAGED PROPERTY

FROM:
THRU:
TO:

1. DESCRIPTION OF PROPERTY: Intentional
A. NAME White
B. COLOR White
C. MODEL SF647

D. SERIAL# Unit 589 + 5897
E. INV#
F. COST

G. AGE OR YEAR ACQUIRED 2008

2. LOSS DATA:
VIN # 1HSWYRHT885681240

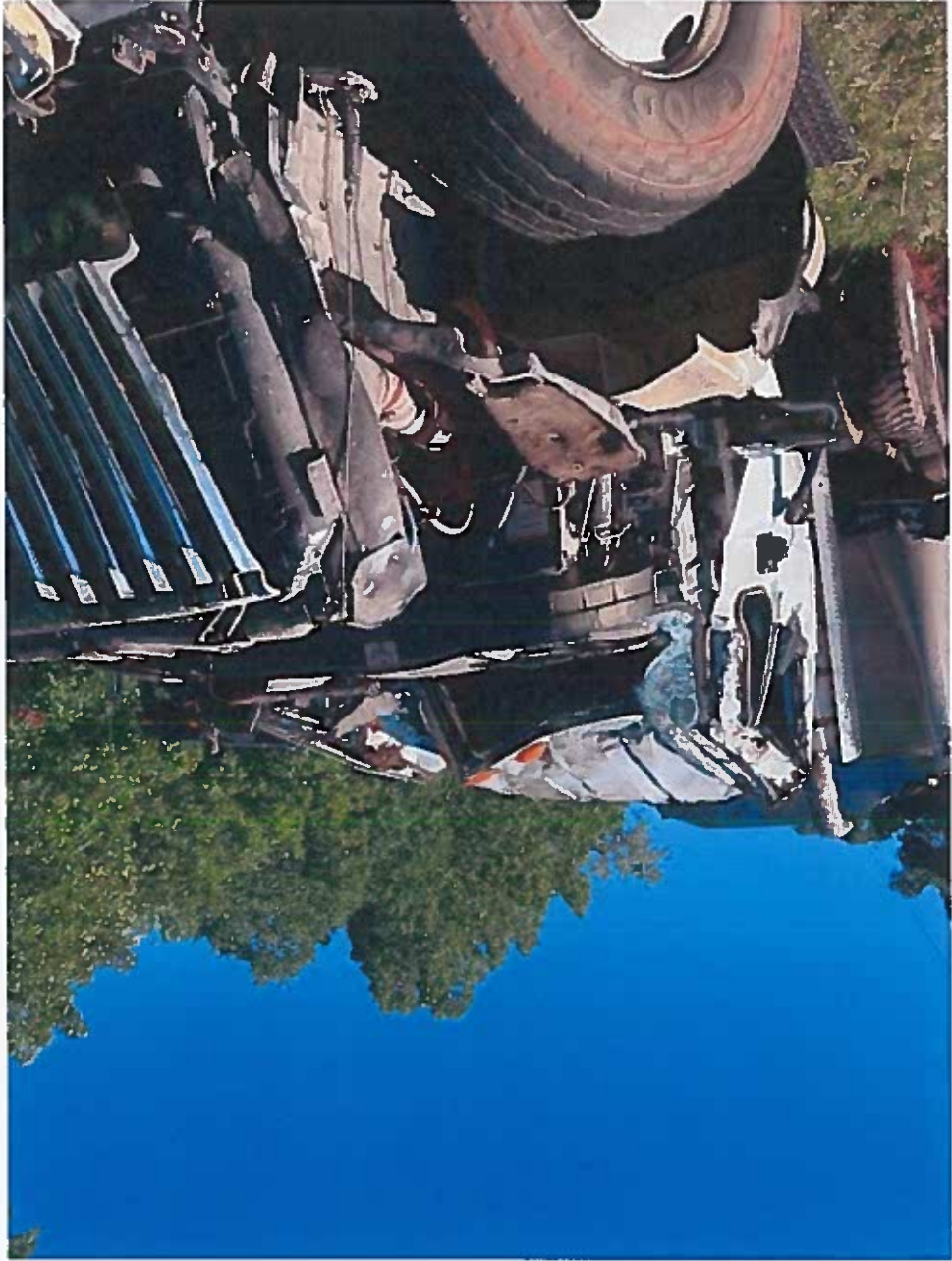
A. Date of loss/damage first discovered: May 9th, 2024 approx 12:30pm
B. Narrative of event and names of others who may be responsible for loss: Driver

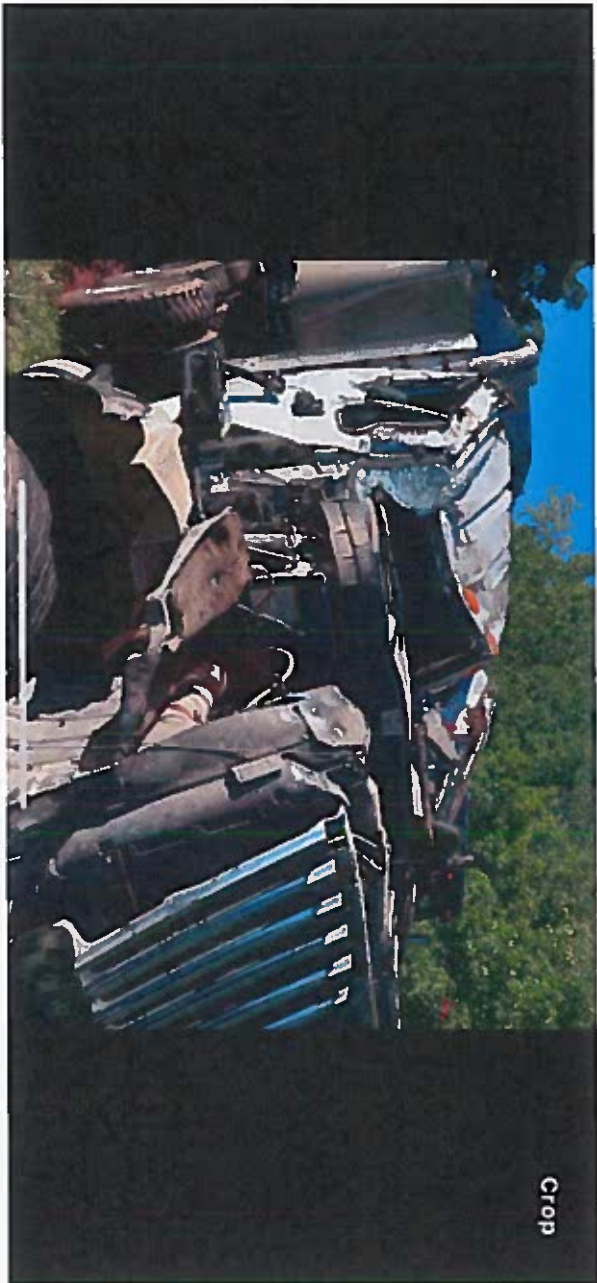
was ran off the road by SUV crossing the center line on Bethel rd south of Hwy 9.

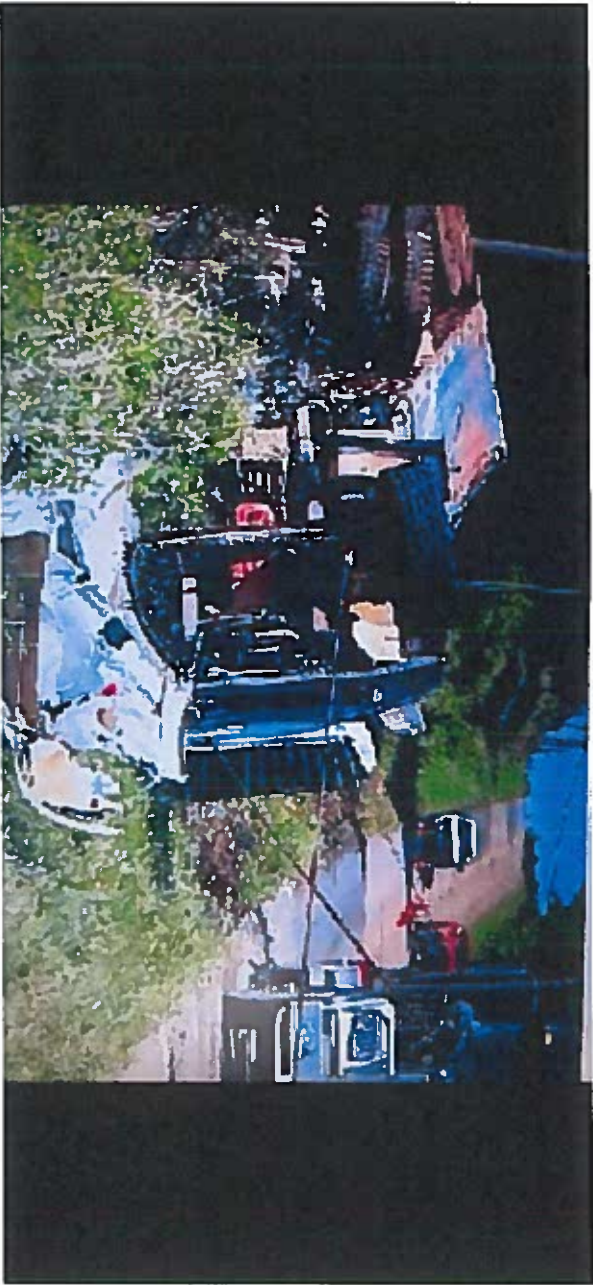
C. Action taken after discovery: OHP officer Connor Fryear #386
call Auto Works towing to recover wreck.

D. Was police report initiated? OHP report attached
E. Proposed actions taken to replace/repair property: Unit 598 and 598T are considered totaled by fleet maint.

SECURITY:
A. Description of area where property was normally kept: In service at
Water Reclamation Facility 3500 Jenkins Ave
Norman, OK 73072
B. Security measures in effect prior to loss: Parked at Water Reclamation Facility.
C. Security measures taken or proposed after loss: Located at Auto Works in Earlsboro, OK.









General Information

Case Number: 24-009037

Investigating Officer: Conner Fryear

Badge #: 386

City/County: TECUMSEH, POTTAWATOMIE

Location: 1056 feet South of BETHEL RD and OK-9

Collision Date: 6/8/2024 12:36 PM

Driver

Name: JAMES STANLEY

Address: 7650 96TH ST

City: NOBLE

State: Oklahoma

Zip: 73068

Phone: 4053068271

Date of Birth: 03/26/1965

DLN: J082460252

DL State: Oklahoma

Vehicle

VIN: 1HSWYAHT88J681240

Year: 2008

Make: International

Model: SF647

Plate: 366129

Plate State: Oklahoma

Owner

Name: CITY OF NORMAN

Address: 1301 DAVINCI

City: NORMAN

State: Oklahoma

Zip: 73071

Insurance

Company:

Policy #:

Phone #:

If you find the other driver was not insured at the time of the above referenced collision, you may complete an Oklahoma Motor Vehicle Collision Report and file it with the Oklahoma Motor Vehicle Bureau.