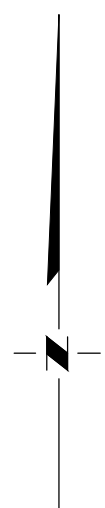
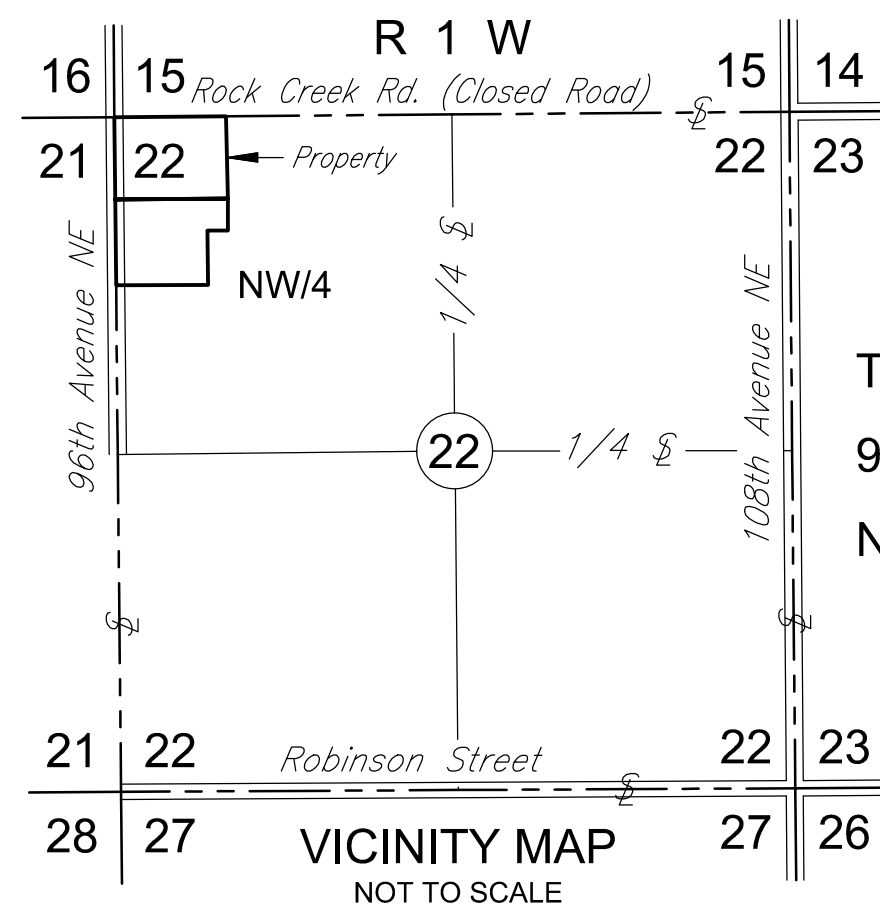


**PRELIMINARY PLAT OF
TRENT ESTATES**
An Addition to the City of Norman, Cleveland County, Oklahoma

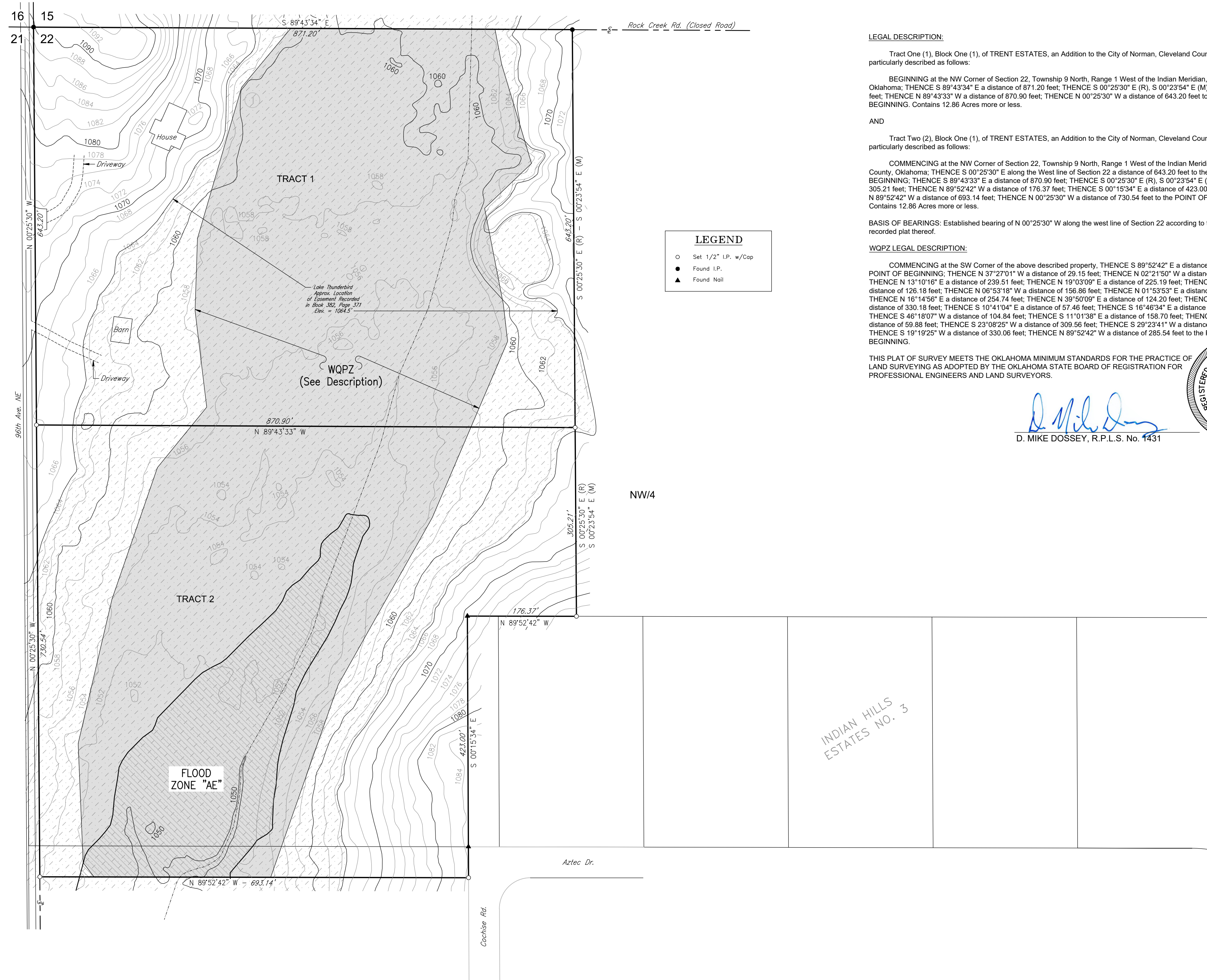


FLOOD ZONE DESIGNATION

SUBJECT PROPERTY IS PARTIALLY LOCATED IN FLOOD ZONE "AE", ACCORDING TO FIRM MAP #40027C0310, DATED 09/26/08

Notes:

- A United States flowage easement lies on a portion of this parcel. This flowage easement was recorded on December 7, 1962 at Book 382, Page 371 of the Deed Records of Cleveland County, Oklahoma. The flowage easement prohibits certain activities below elevation 1064.5 feet including construction of buildings used for human occupancy as well as other structures which would interfere with the operation of the Project for its primary purposes, and also prohibits artificial changes in topography except for terracing and soil conservation measures.
- (WQPZ) - Indicates the Water Quality Protection Zone. There shall be no clearing, grading, construction or disturbance of vegetation in this area except as permitted by the Director of Public Works, unless such disturbance is done in accordance with 19-514E of the Norman City Code. The WQPZ is subject to protective covenants that may be found in the Land Records and that may restrict disturbance and use of these areas.



LEGAL DESCRIPTION:

Tract One (1), Block One (1), of TRENT ESTATES, an Addition to the City of Norman, Cleveland County, Oklahoma more particularly described as follows:

BEGINNING at the NW Corner of Section 22, Township 9 North, Range 1 West of the Indian Meridian, Cleveland County, Oklahoma; THENCE S 89°43'34" E a distance of 871.20 feet; THENCE S 00°25'30" E (R), S 00°23'54" E (M) a distance of 643.20 feet; THENCE N 89°43'33" W a distance of 870.90 feet; THENCE N 00°25'30" W a distance of 643.20 feet to the POINT OF BEGINNING. Contains 12.86 Acres more or less.

AND

Tract Two (2), Block One (1), of TRENT ESTATES, an Addition to the City of Norman, Cleveland County, Oklahoma more particularly described as follows:

COMMENCING at the NW Corner of Section 22, Township 9 North, Range 1 West of the Indian Meridian, Cleveland County, Oklahoma; THENCE S 00°25'30" E along the West line of Section 22 a distance of 643.20 feet to the POINT OF BEGINNING; THENCE S 89°43'33" E a distance of 870.90 feet; THENCE S 00°25'30" E (R), S 00°23'54" E (M) a distance of 305.21 feet; THENCE N 89°52'42" W a distance of 176.37 feet; THENCE S 00°15'34" E a distance of 423.00; THENCE N 89°52'42" W a distance of 693.14 feet; THENCE N 00°25'30" W a distance of 730.54 feet to the POINT OF BEGINNING. Contains 12.86 Acres more or less.

BASIS OF BEARINGS: Established bearing of N 00°25'30" W along the west line of Section 22 according to the recorded plat thereof.


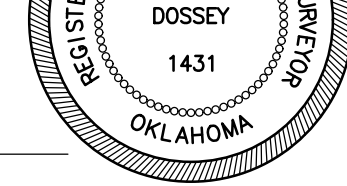
WQPZ LEGAL DESCRIPTION:

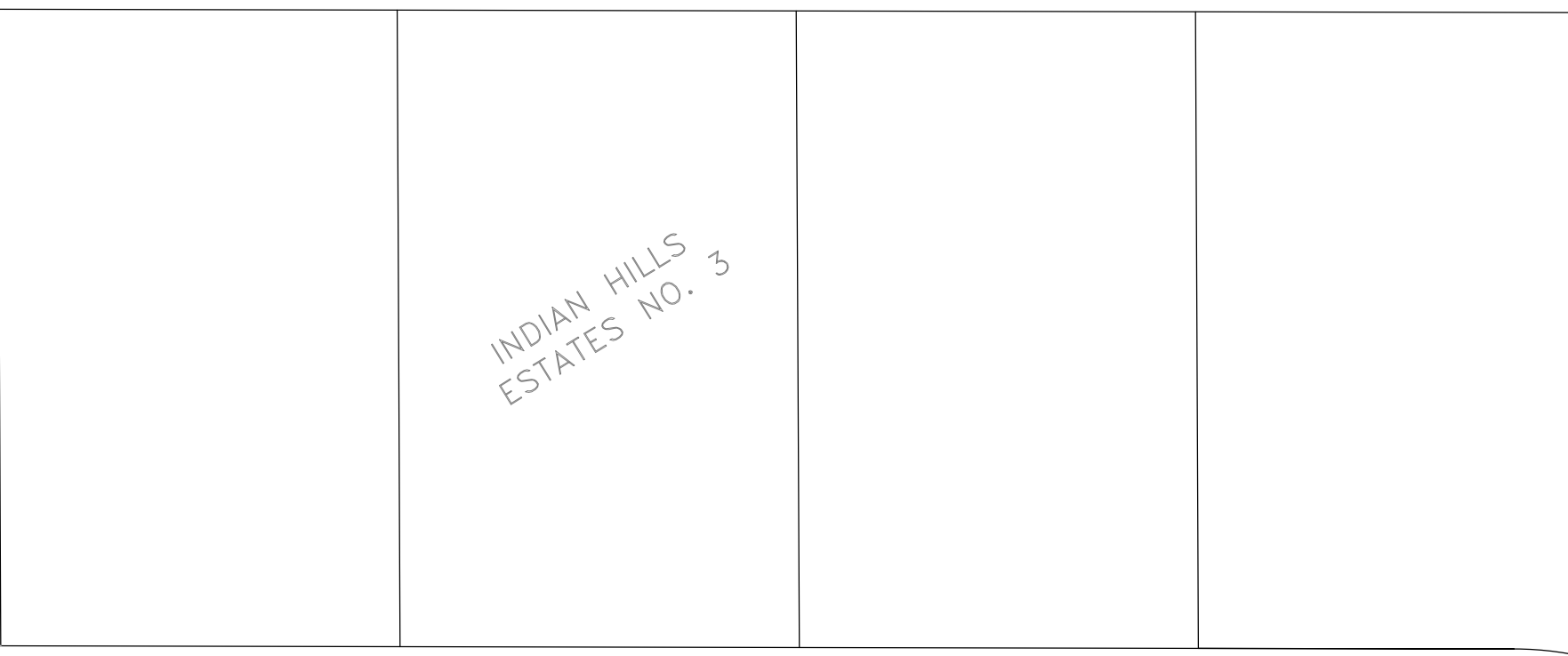
COMMENCING at the SW Corner of the above described property, THENCE S 89°52'42" E a distance of 87.68 feet to the POINT OF BEGINNING; THENCE N 37°27'01" W a distance of 29.15 feet; THENCE N 02°21'50" W a distance of 192.70 feet; THENCE N 13°10'16" E a distance of 239.51 feet; THENCE N 19°03'09" E a distance of 225.19 feet; THENCE N 39°11'13" E a distance of 126.18 feet; THENCE N 06°53'18" W a distance of 156.86 feet; THENCE N 01°53'53" E a distance of 116.76 feet; THENCE N 16°14'56" E a distance of 254.74 feet; THENCE N 39°50'09" E a distance of 124.20 feet; THENCE S 89°43'34" E a distance of 330.18 feet; THENCE S 10°41'04" E a distance of 57.48 feet; THENCE S 16°48'34" E a distance of 167.55 feet; THENCE S 46°18'07" W a distance of 104.84 feet; THENCE S 11°01'38" E a distance of 158.70 feet; THENCE S 06°34'57" E a distance of 59.88 feet; THENCE S 23°08'25" W a distance of 309.56 feet; THENCE S 29°23'41" W a distance of 310.17 feet; THENCE S 19°19'25" W a distance of 330.06 feet; THENCE N 89°52'42" W a distance of 285.54 feet to the POINT OF BEGINNING.


THIS PLAT OF SURVEY MEETS THE OKLAHOMA MINIMUM STANDARDS FOR THE PRACTICE OF LAND SURVEYING AS ADOPTED BY THE OKLAHOMA STATE BOARD OF REGISTRATION FOR PROFESSIONAL ENGINEERS AND LAND SURVEYORS.

LEGEND

- Set 1/2" I.P. w/Cap
- Found I.P.
- ▲ Found Nail


 D. MIKE DOSSEY, R.P.L.S. No. 1431
 



	SCALE: 1"=100'	SURV. BY: J.D.	DWG. NO.: 211492_OVERALL	1	REVISED WQPZ	12/01/21	T.A.W.	D.M.D.
	DATE: 10/22/21	DRAWN BY: T.A.W.	AFE NO.:	NO.	REVISION	DATE	BY	APPR.
	JOB NO.: 211492	APPR. BY: D.M.D.	SHEET 1 OF 1	NO.				

**PRELIMINARY PLAT OF
TRENT ESTATES**