

GREENSPACE EXHIBIT
**UNIVERSITY NORTH PARK
 ENTERTAINMENT DISTRICT**
 A PLANNED UNIT DEVELOPMENT
 A PART OF THE E./2, SEC. 14, T9N, R3W, I.M.
 NORMAN, CLEVELAND COUNTY, OKLAHOMA

PRIVATE PARK LAND AREA CALCULATIONS SUMMARY (DEVELOPMENT AREAS 1 AND 2)

NUMBER OF RESIDENTIAL LOTS AND MULTI-FAMILY UNITS PER THE PUD:
 1. SINGLE-FAMILY LOTS - 37 LOTS (97 PERSONS)
 2. MULTI-FAMILY - 756 UNITS (1,342 PERSONS)
 3. TOTAL POPULATION: 1,582 PERSONS

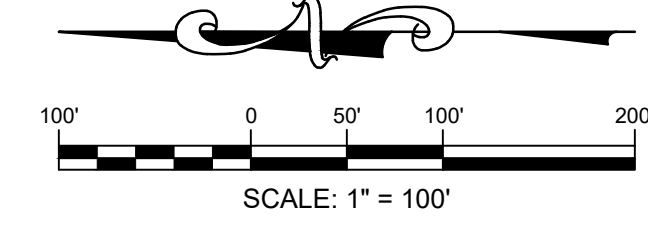
SINGLE FAMILY FORMULA: (# LOTS) X (2.62 PERSONS PER LOT) X (0.0025 ACRES PER PERSON)
 (37 LOTS) X (2.62 PERSONS PER LOT) X (0.0025 ACRES PER PERSON) = 0.242 ACRES

MULTI-FAMILY FORMULA: (# UNITS) X (1.77 PERSONS PER UNIT) X (0.0025 ACRES)
 (756 UNITS) X (1.77 PERSONS PER UNIT) X (0.0025 ACRES) = 3.354 ACRES

TOTAL PRIVATE PARK LAND AREA REQUIRED: 2 X (0.242 ACRES + 3.354 ACRES) = 7.19 ACRES
 TOTAL RESIDENTIAL PRIVATE PARK LAND AREA PROVIDED PER THE PREL. SITE DEVELOPMENT PLAN: 11.5 ACRES.

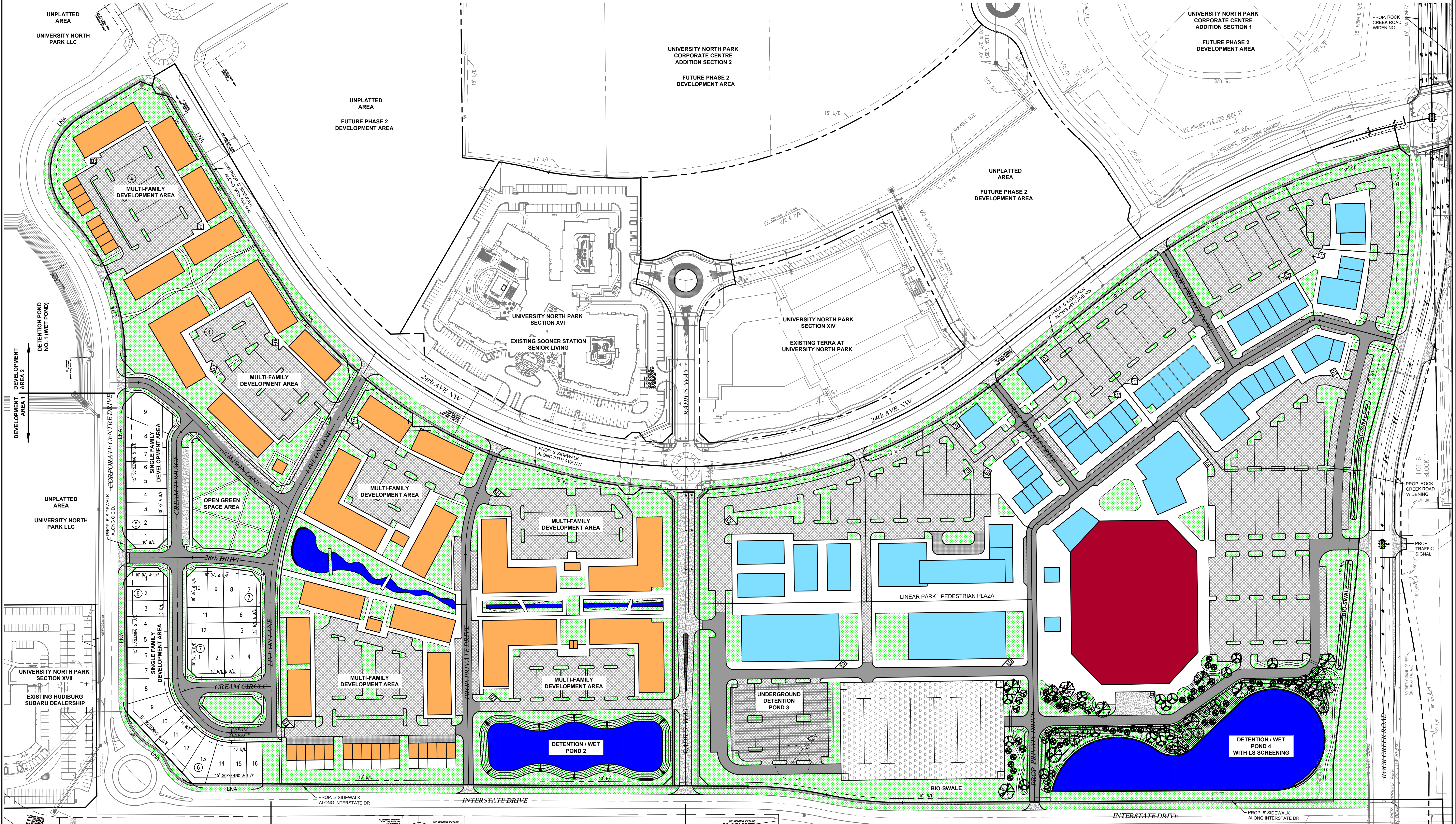
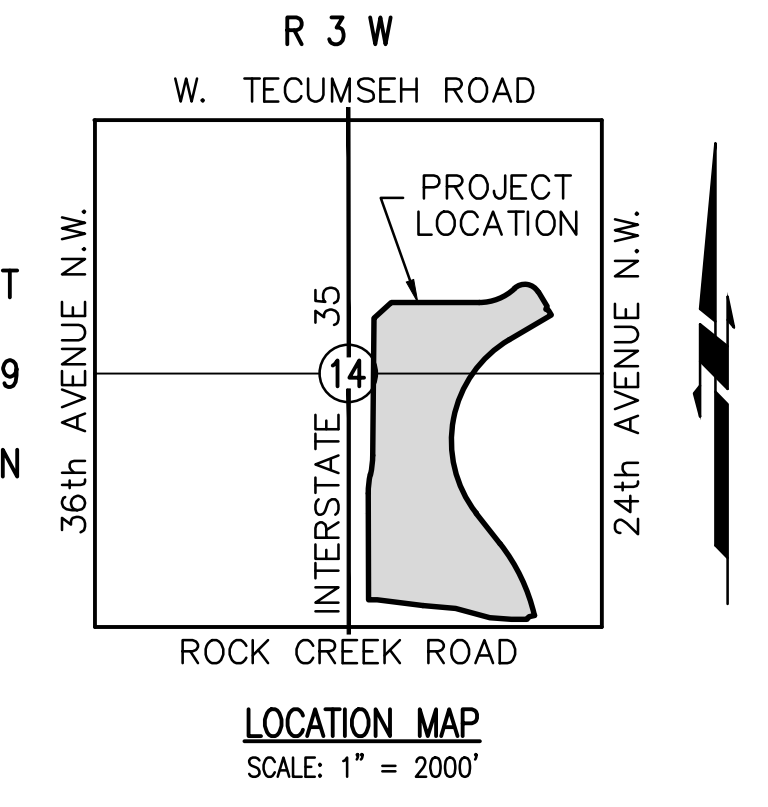
PRELIMINARY OPEN SPACE SUMMARY

DEVELOPMENT AREA 1: 10.4%
 DEVELOPMENT AREA 2: 34.5%
 DEVELOPMENT AREA 3: 19.3%
 OVERALL OPEN SPACE: 24.4%



LEGEND

- | | | | |
|--|--------------------------------|--|---------------------------------------|
| | CONCRETE PAVEMENT | | PARKING GARAGE |
| | HEAVY DUTY ASPHALT PAVEMENT | | DETENTION / WET PONDS |
| | STANDARD DUTY ASPHALT PAVEMENT | | UNDERGROUND DETENTION POND |
| | CONCRETE SIDEWALKS | | GREENSPACE AREAS |
| | COMMERCIAL / OFFICE BUILDINGS | | TREES & BERMS FOR SCREENING AT POND 4 |
| | MULTI-FAMILY BUILDINGS | | |



NOT VALID FOR CONSTRUCTION
**PRELIMINARY
 NOT FOR
 CONSTRUCTION**
 UNLESS SHOWN IN THIS BLOCK

UNIVERSITY NORTH PARK
 ENTERTAINMENT DISTRICT
 INTERSTATE 35 & ROCK CREEK ROAD
 NORMAN, OKLAHOMA

SMC
 SMC Consulting Engineers, P.C.
 1000 N. UNIVERSITY AVENUE, SUITE 1000
 NORMAN, OKLAHOMA 73069
 PHONE: 405-232-7715 FAX: 405-232-7899
 WWW.SMCENGINEERS.COM

PROJECT NO. 0580.00
 DATE: 11/01/23
 SCALE: 1" = 100'
 DRAWN BY: TJK
 ENGINEER: TRENCE L. HAYNES
 P.E. NUMBER: 16820

GREENSPACE
 EXHIBIT
 SHEET NO.
GS-01

UNIVERSITY NORTH PARK ENTERTAINMENT DISTRICT GREENSPACE EXHIBIT
 DRAWN BY: TRENCE L. HAYNES, P.E. DATE: 11/01/23