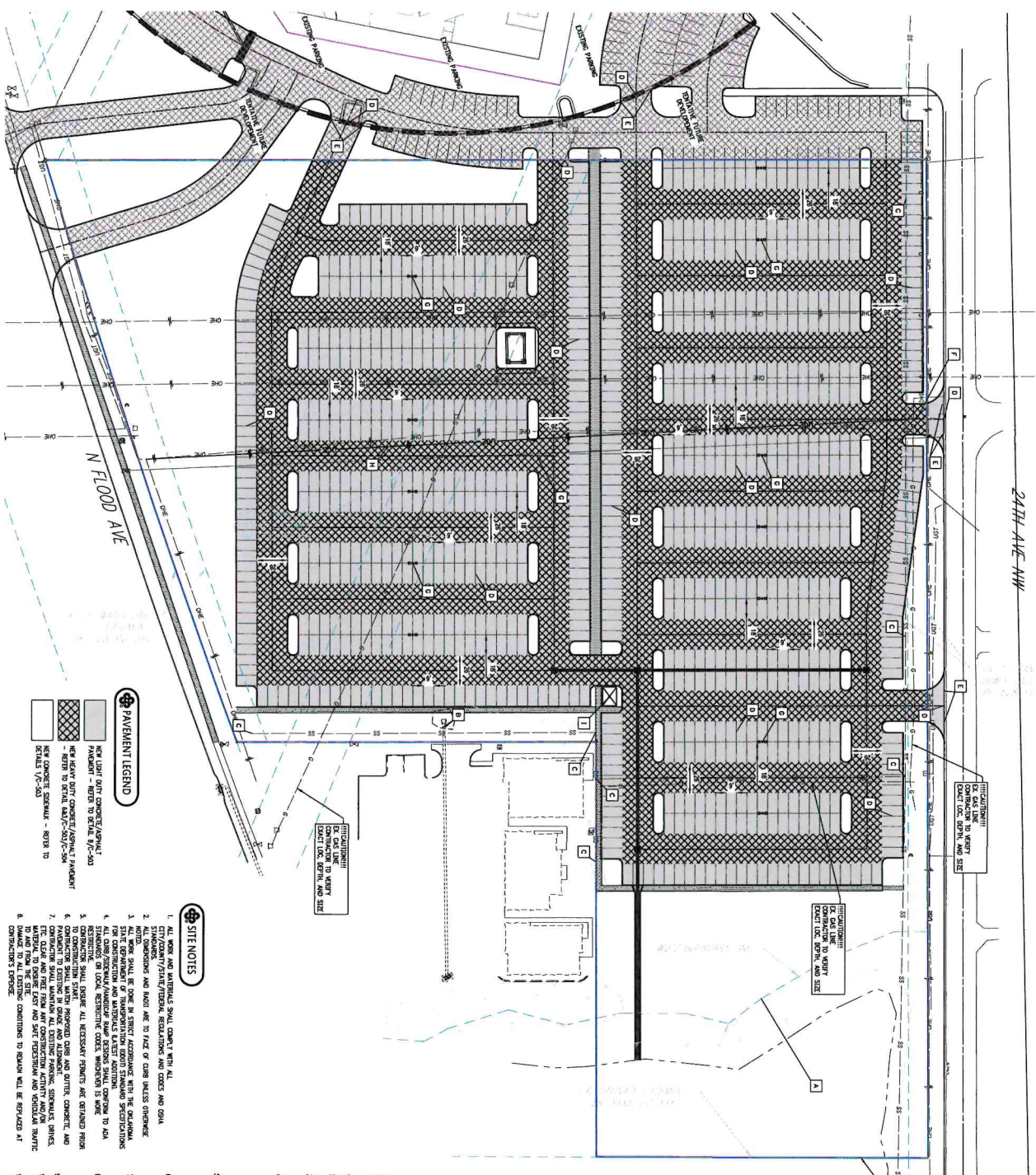





~~24TH AVE NW~~

PAVEMENT LEGEND

- | | |
|---|---|
|  | NEW LIGHT DUTY CONCRETE/ASPHALT PAVEMENT - REFER TO DETAIL 8/C-503 |
|  | NEW HEAVY DUTY CONCRETE/ASPHALT PAVEMENT - REFER TO DETAIL 6A/C-503/C-504 |
|  | NEW CONCRETE SIDEWALK - REFER TO DETAILS 7/C-503 |

SITE NOTES

- [illegible]

DEMOLITION NOTES

- A WATER QUALITY PROTECTION ZONE EXISTING?
- B EXISTING STORM PIPE TO REMAIN
- C OLDEST MANHOLE TO FINISH GRADE, PER CITY STANDARDS
- D MEET AAS MANDATE, TYP.
- E SAW CUT & REMOVE CURB
- F RELOCATE POWER POLE
- G RELOCATE OVERHEAD ELECTRIC
- H CONSTRUCT INTERBOROUGH ELECTRIC
- I TRAVEL STATION

 PARKING SUMMARY:

- ZONING: I-1
USE: CMV
BUILDING USAGE: CHURCH
ADDRESS: 10.28 AC
% OF LOT IMPERVIOUS= 67%
- PARKING REQUIREMENTS:
MINIMUM PARKING REQUIREMENTS
REQUIRED: 0
PROVIDED: 0
TOTAL EXISTING PARKING: 0
TOTAL NEW PARKING: 880 P.S.
TOTAL PROVIDED PARKING: 880 P.S.

LEGEND

- A WATER QUALITY PROTECTION ZONE ELEMENT
- B EXISTING STORM PIPE TO REMAIN
- C ADJUST MANHOLE TO FINISH GRADES, PER CITY STANDARDS
- D REET AND MANHOLE TYP.
- E SAW CUT & REMOVE CURB
- F RELOCATE POWER POLE
- G RELOCATE OVERHEAD ELECTRIC
- H CONSTRUCT UNDERGROUND ELECTRIC
- I TRANSIT STATION

DEMOLITION NOTES

- [illegible]