

A PART OF THE N.W. 1/4 OF SECTION 7, T8N, R2W, I.M.  
NORMAN, CLEVELAND COUNTY, OKLAHOMA



DRAINAGE DETENTION FACILITY EASEMENTS ARE HEREBY ESTABLISHED AS SHOWN TO PROVIDE FOR DETENTION OF STORM SURFACE WATER AND CONSTRUCTED AS APPROVED BY THE CITY ENGINEER. ALL MAINTENANCE WITHIN THE DRAINAGE DETENTION FACILITY EASEMENT SHALL BE THE RIGHT, DUTY AND RESPONSIBILITY OF THE PROPERTY OWNERS ASSOCIATION IN THE PLAT OF THE OLD DAIRY FARM. HOWEVER, IF MAINTENANCE IS REQUIRED OR SUGGESTED BY OTHER AGENCIES OR PERSONS, THE PROPERTY OWNERS ASSOCIATION SHALL BE RESPONSIBLE FOR THE MAINTENANCE OF THE FACILITY TO BE A HAZARD OR THREAT TO PUBLIC SAFETY BY THE CITY. CORRECTIVE MAINTENANCE MAY BE PERFORMED BY THE GOVERNING JURISDICTION WITH COSTS ASSESSED TO AND BORN UPON SAID PROPERTY OWNERS ASSOCIATION. OFFICIALS REPRESENTING THE PUBLIC WORKS DEPARTMENT, SHALL HAVE THE RIGHT TO ENTER UPON THE EASEMENT FOR PURPOSES OF PERIODIC INSPECTION AND/OR CORRECTIVE MAINTENANCE OF THE FACILITY. UPON REQUEST, THE CITY ENGINEER OR OTHER AGENCIES OR PERSONS, THE PROPERTY OWNERS ASSOCIATION MAY CONSTRUCT IMPROVEMENTS WITHIN THE EASEMENT, PROVIDED THE IMPROVEMENT DOES NOT INTERFERE WITH THE FUNCTION OF THE DETENTION FACILITY.



A tract of land lying in the Northwest Quarter (NW/4) of Section Seven (7), Township Eight (8) North, Range Two (2) West of the Indian Meridian, Cleveland County, Oklahoma and being more particularly described as follows:

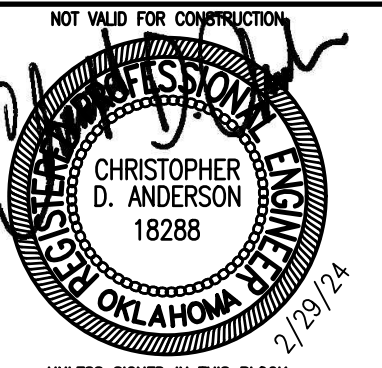
COMMENCING at the Northeast corner of the Southeast Quarter of said NW/4; THENCE South 0014°48' East along the East line of said NW/4 a distance of 330.00 feet to the POINT OF BEGINNING;

THENCE continuing South 0014'48" East along said East line a distance of 165.00 feet;  
THENCE South 88°59'46" West a distance of 330.80 feet;  
THENCE North 0014'48" West a distance of 165.00 feet;  
THENCE North 88°59'46" East a distance of 330.80 feet to the POINT OF BEGINNING.

Said tract contains 1.25 acres, more or less.

NOTES:

1. FIRE HYDRANTS WILL BE LOCATED AND INSTALLED IN ACCORDANCE WITH THE FINAL PLANS AND THE CITY OF NORMAN STANDARDS AND SPECIFICATIONS. FIRE HYDRANTS WILL BE LOCATED WITHIN 3 TO 6 FEET OF CURB.
2. ALL WATER LINES TO BE 8" DIA. UNLESS NOTED OTHERWISE.
3. EXISTING ZONING IS CO.



# THE OLD DAIRY FARM

**CHAUTAUQUA AVE. & HIGHWAY 9  
NORMAN, OKLAHOMA**

**SMC**  
SMC Consulting Engineers, P.C.  
815 West Main - Oklahoma City, OK 73106  
PH: 405-232-7715 Fax: 405-232-7859  
Website: [www.smcokc.com](http://www.smcokc.com)

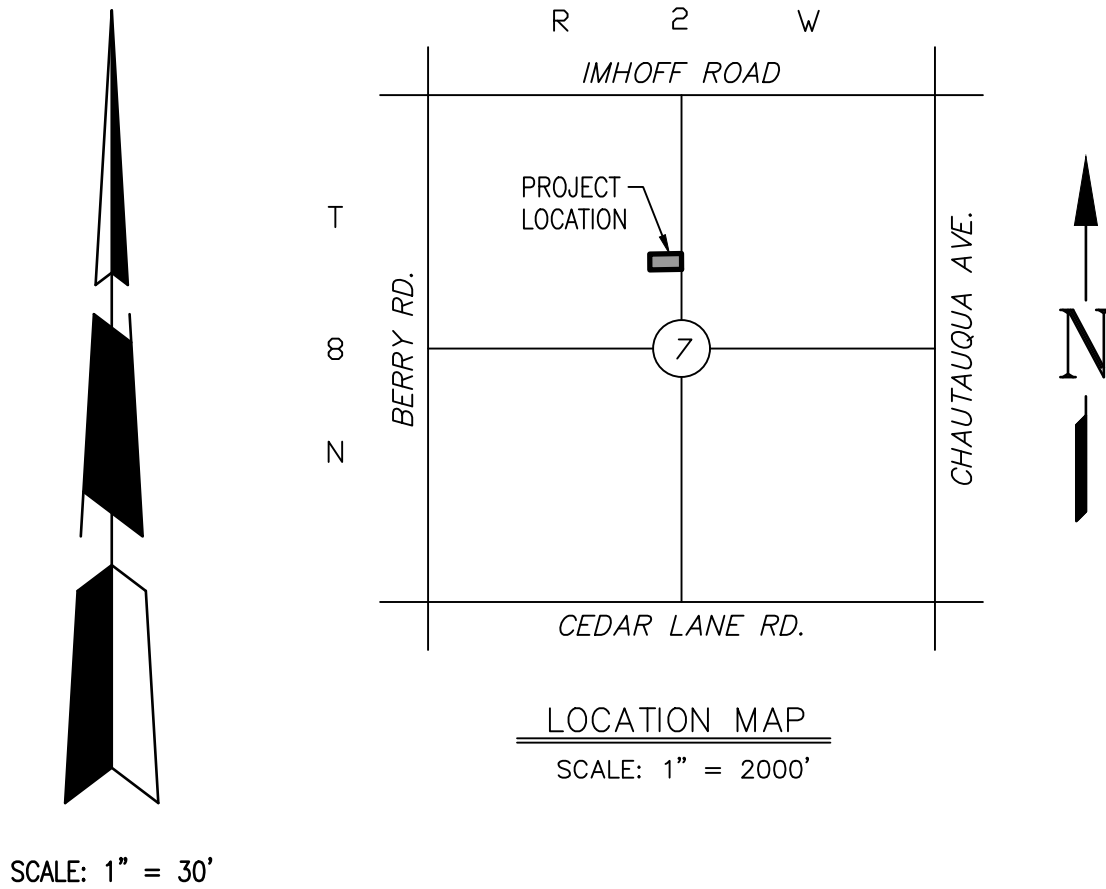
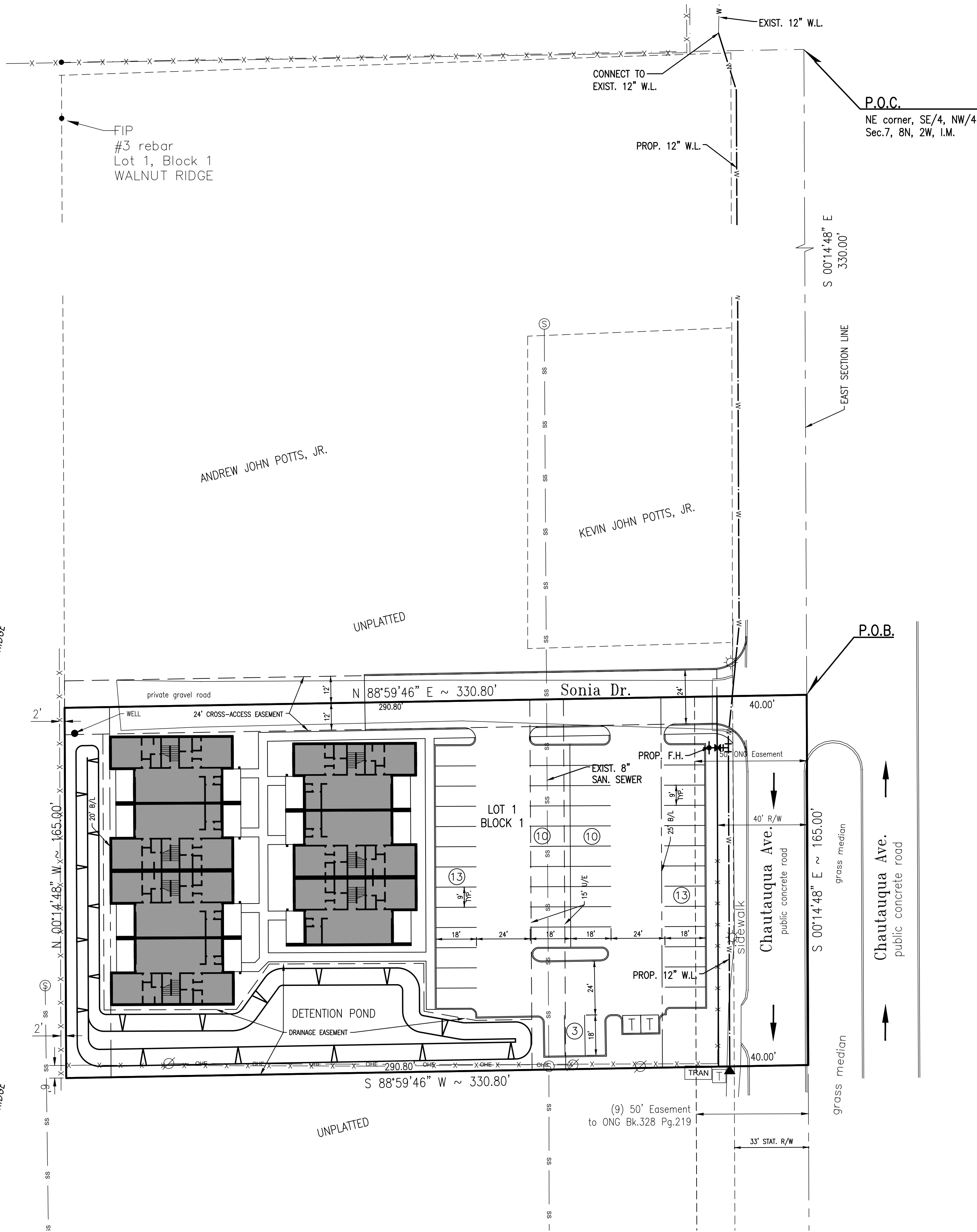
PROJECT NO.: 6569.00  
DATE: 2/29/24  
SCALE: 1" = 20'  
DRAWN BY: D.G.  
ENGINEER: Christopher D. Anderson  
P.E. NUMBER: 18288

### Preliminary Plat

SHEET NO.  
1

PRELIMINARY SITE PLAN  
THE OLD DAIRY FARM

A PART OF THE N.W. 1/4 OF SECTION 7, T8N, R2W, I.M.  
NORMAN, CLEVELAND COUNTY, OKLAHOMA



SCALE: 1" = 30'

NOTES:

- FIRE HYDRANTS WILL BE LOCATED AND INSTALLED IN ACCORDANCE WITH THE FINAL PLANS AND THE CITY OF NORMAN STANDARDS AND SPECIFICATIONS. FIRE HYDRANTS WILL BE LOCATED WITHIN 3 TO 6 FEET OF CURB.
- ALL WATER LINES TO BE 8" DIA. UNLESS NOTED OTHERWISE.
- EXISTING ZONING IS CO.

STORM DRAINAGE DETENTION FACILITY EASEMENT

DRAINAGE DETENTION FACILITY EASEMENTS ARE HEREBY ESTABLISHED AS SHOWN TO PROVIDE FOR DETENTION OF STORM SURFACE WATER AND CONSTRUCTED AS APPROVED BY THE CITY ENGINEER. ALL MAINTENANCE WITHIN THE DRAINAGE DETENTION FACILITY EASEMENT SHALL BE THE RIGHT, DUTY AND RESPONSIBILITY OF THE PROPERTY OWNERS ASSOCIATION IN THE PLAT OF THE OLD DAIRY FARM. HOWEVER, IF MAINTENANCE IS NEGLECTED OR SUBJECT TO OTHER UNUSUAL CIRCUMSTANCES AND IS DETERMINED TO BE A HAZARD OR THREAT TO PUBLIC SAFETY BY THE CITY, CORRECTIVE MAINTENANCE MAY BE PERFORMED BY THE GOVERNING JURISDICTION WITH COSTS ASSESSED TO AND BORN UPON SAID PROPERTY OWNERS ASSOCIATION. OFFICIALS REPRESENTING THE PUBLIC WORKS DEPARTMENT, SHALL HAVE THE RIGHT TO ENTER UPON THE EASEMENT FOR PURPOSES OF PERIODIC INSPECTION AND/OR CORRECTIVE MAINTENANCE OF THE FACILITY. UPON RECEIVING WRITTEN APPROVAL FROM THE PUBLIC WORKS DEPARTMENT, PROPERTY OWNERS ASSOCIATION MAY CONSTRUCT IMPROVEMENTS WITHIN THE EASEMENT, PROVIDED THE IMPROVEMENT DOES NOT INTERFERE WITH THE FUNCTION OF THE DETENTION FACILITY.

© SMC CONSULTING ENGINEERS, P.C. ALL RIGHTS RESERVED THESE DOCUMENTS MAY NOT BE USED FOR ANY PURPOSES WITHOUT PRIOR WRITTEN PERMISSION FROM SMC CONSULTING ENGINEERS, P.C.

THE OLD DAIRY FARM

CHAUTAUQUA AVE. & HIGHWAY 9  
NORMAN, OKLAHOMA

SMC Consulting Engineers, P.C.  
6110 S. Broadway, Suite 100  
Norman, Oklahoma 73069  
PH: 405-232-7715 Fax: 405-232-7659  
Website: www.smcok.com

PROJECT NO.: 6569.00  
DATE: 2/29/24  
SCALE: 1" = 30'  
DRAWN BY: D.G.  
ENGINEER:  
P.E. NUMBER:

Preliminary Site Plan

SHEET NO.  
1