



**DATE:** September 16, 2022

**TO:** Darrel Pyle, City Manager

**FROM:** Joseph Hill, Streets Program Manager

**THROUGH:** Shawn O'Leary, Director of Public Works

**SUBJECT:** Authorization for On-Call services Contract K-1920-61 for design services on Robinson Street overlay project between 24<sup>th</sup> Avenue NW and Berry Road and authorization of funds as outlined below

**BACKGROUND:**

The Association of Central Oklahoma Governments (ACOG) announced a call for projects on September 1, 2022. As a part of this package ACOG announced \$8.9 million in Coronavirus Response and Relief Supplemental Appropriations Act (CRRSAA) Funds. Municipalities can submit project applications requesting up to \$500,000.00. Upon review of this information, Staff identified a section of asphalt pavement on Robinson Street between 24<sup>th</sup> Avenue NW on the West end and Berry Road on the East end as a competitive asphalt resurfacing project. With a generally small obligation window for these funds, minor resurfacing projects have been identified as an eligible project type under the CRRSAA funding.

Robinson Street, within the described limits is a major thoroughfare into the City of Norman. With direct access to and from I35, Robinson Street provides high volume access to both major commercial corridors as well as residential neighborhoods. The current asphalt surface condition within these described limits is beginning to show its age. Visible fatigue cracking, rutting and localized failure are present in the asphalt surface throughout this stretch of Robinson Street which carries upwards of 26,000 vehicles per day based upon information obtained through the ACOG transportation data management system.

**DISCUSSION:**

In order to provide a competitive application for the CRRSAA funding, staff solicited a quote from Parkhill Engineering for design services in order to prepare a basic plan set outlining limits of the project, ADA ramp repairs required because of the modification, and final striping configuration. All submittal material will be prepared in ODOT format in order to create a "shovel ready" package at time of final grant application.

Attached please find the quote from Parkhill Engineering in the amount of \$28,421.00 to provide topographic survey of ADA ramp areas, construction plan documents which will include title sheet, quantity summaries and summary pay quantity sheet, overlay plan sheets, striping sheets and ramp detail sheets. With approval, staff will provide Parkhill Engineering with an NTP under the on-call engineering services contract to immediately begin preparation of these documents for the final grant submittal deadline of October 31, 2022 at 4:00 PM.

Funding for this task order can be found in project Account SC0648 which is a rollover account from design of Interstate Drive reconstruction project. This account holds sufficient funds to complete the described task order and any additional funds remaining shall be returned to fund balance. Account information for funding below.

SC0648-East Interstate Drive reconstruction Design Acct. # 50596692-46201

**RECOMMENDATION NO. 1:**

Staff recommends authorization of task order for on-call services under contract K-1920-61 with Parkhill Engineering for design services on Robinson Street overlay project between 24<sup>th</sup> Avenue NW and Berry Road and authorization of funds in the amount of \$28,421.00 from SC0648 Acct #50596692-46201

ACCEPTED BY: \_\_\_\_\_

  
Darrel Pyle, City Manger

DATE: \_\_\_\_\_

9-12-22

September 16, 2022

Joseph Hill  
Streets program Manager  
City of Norman Streets Division  
688 E. Lindsey Street  
Norman, OK 73071

Transmitted via email: [Joseph.Hill@NormanOK.gov](mailto:Joseph.Hill@NormanOK.gov)

RE: Proposal – Robinson Avenue Overlay Plans  
Performed under existing “On-Call” Contract  
Scope of Services and Notice to Proceed

Dear Mr. Hill:

This letter represents a Scope of Services and estimated Lump Sum Fee Schedule for Civil Engineering Services for the above referenced project to be performed under the terms of the above-referenced “On-call” contract.

The scope consists of the preparation of an overlay plan set for West Robinson Street, between 24<sup>th</sup> Ave. NW and Berry Road (approximately 5,050 ft total overlay length). The overlay will consist of a 2” Mill and 2.5” overlay including ADA ramps that directly adjoin the overlay asphalt paving section.

The design plans to include the following sheets: Title, Pay Quantity Summary and Notes, Overlay Plan Sheets, Striping Sheets, and ADA Ramp Detail Sheets.

The design scope includes performing a localized topographic survey for evaluation and potential re-design of ADA ramps in the following locations: West side N-S ramps at Woods Ave., and South E-W ramps at Canterbury St.

Scope Assumptions: Plans to be generated with GIS features and supplemented by topographic survey at ADA potential redesign areas, GIS information (paving, ROW, latest aerial, and parcels) to be made available by City of Norman, pay items to be ODOT format, traffic control to be lump sum, no traffic control plans.

The Scope of Services will be provided for the following lump sum base fees:

TASK DESCRIPTION		
Engineering Estimate	\$ 2,000	Lump Sum
Engineering Plans	\$22,781	Lump Sum
Topographic Survey	\$ 3,640	Lump Sum
<b>Total Fee</b>	<b>\$28,421</b>	<b>Lump Sum</b>

Additional services as needed (i.e., Construction administration, Bid documents, etc) will be provided at rates basis according to the rates established in the “on-call” Contract.

If you have any questions, please do not hesitate to call me. If acceptable, please sign and return a copy of the "Work Order/Notice to Proceed."

Sincerely,

PARKHILL



By

William Swain, PE, PLS  
Team Leader

WS/ac

Enclosures – Attachment "A" – Scope of Services Project Area

**Work Order/Notice to Proceed:**

By:

  
Manager Signature

Darrel Pyle

Please print Name

Department Ordering Services: \_\_\_\_\_

Date: \_\_\_\_\_

Phone #: \_\_\_\_\_

Email Address: \_\_\_\_\_

## ATTACHMENT A SCOPE OF SERVICES

### Project Area:



### Topographic Survey (Ramp areas only)

Horizontal Datum will be Oklahoma State Plan NAD 83 (1993), US Feet. Vertical Datum will be NAVD 88. Benchmarks will be established for each intersection in which has ramp improvements area designed.

### Construction Documents

Parkhill will provide civil engineering design plan documents for the mill and overlay project.

The construction plans will include Title Sheet, Quantity Summaries and Summary Pay Quantity sheet, Overlay Plan Sheets, Striping Sheets, and Ramp Detail Sheets. Plans will be prepared with sufficient detail for the successful bidding and construction of the project.

### Submittals

Preliminary Plans for review comments, pdf format  
Final Construction Plans, pdf format

### Construction Administration

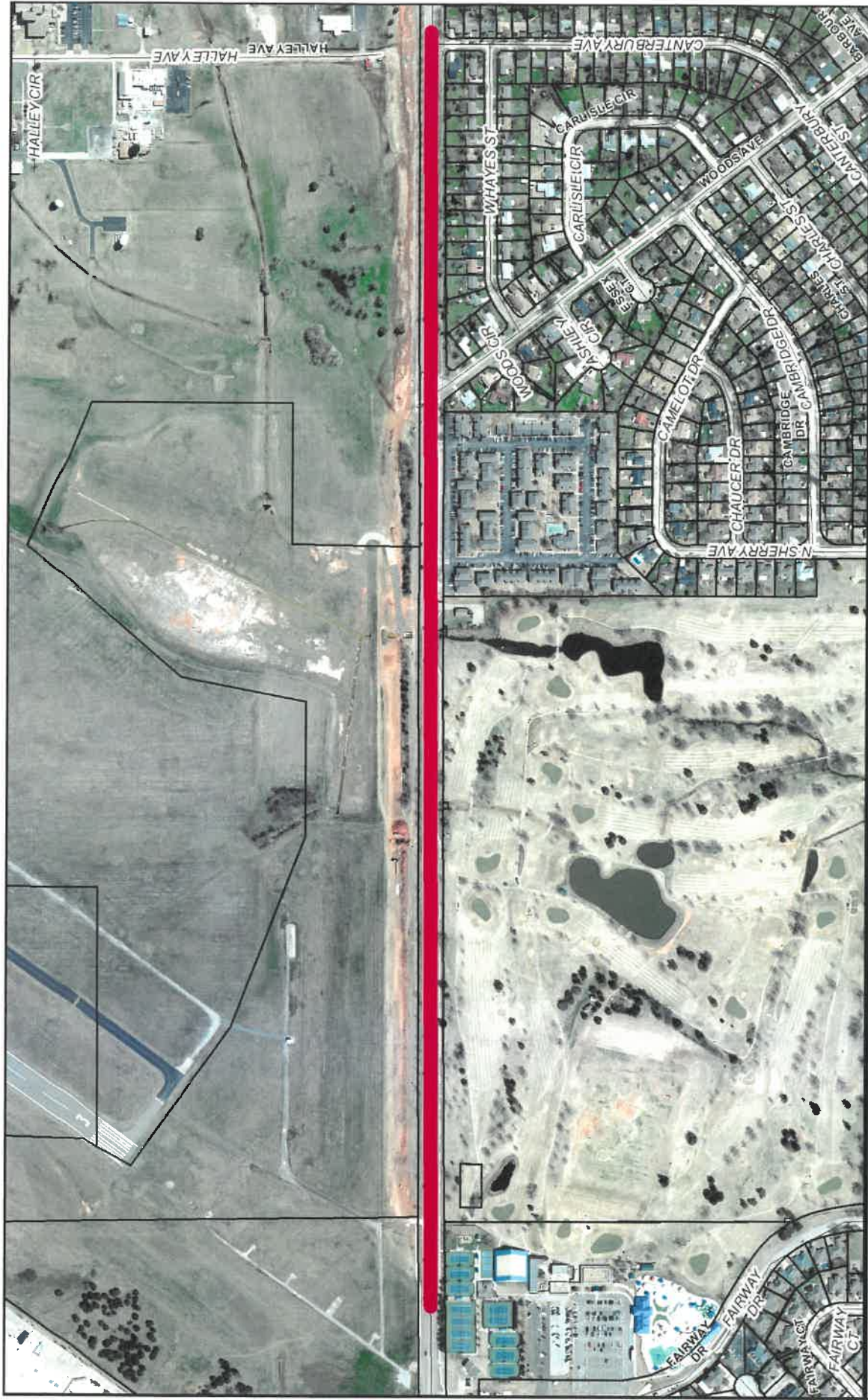
Construction Administration to be provided by ODOT. Parkhill will be available to assist respond to any routine construction administration needs that arise during construction. These items are typically responses to RFIs, review of submittals, clarification of construction documents, etc. The construction administration will be provided at rates basis according to the rates established in the "on-call" Contract.

**SPECIFIC EXCLUSIONS FROM THE SCOPE OF SERVICES**

Utilities – Relocation plans for utilities are not anticipated nor included in the scope of services.

Construction Inspection - It is anticipated that the ODOT will provide construction inspection.





## Robinson Street (24th Avenue NW to Canterbury Avenue)



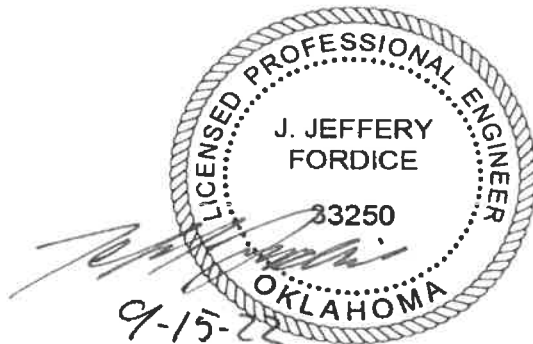
1 inch = 500 feet

The City of Norman assumes no responsibility for errors or omissions in the information presented.

# CRRSAA Robinson Street Overlay 24th Avenue NW to Berry Road

## PRELIMINARY ENGINEER'S ESTIMATE

ITEM	DESCRIPTION	UNIT	UNIT PRICE	QUANTITY	EXTENDED PRICE
1	Mobilization	L. Sum	\$ 70,000.00	1	\$ 70,000.00
2	Traffic Control (11,12,13)	L. Sum	\$ 30,000.00	1	\$ 30,000.00
3	Saw Cut Pavement Full Depth	L.F.	\$ 4.00	20	\$ 80.00
4	Remove Curb & Gutter (6)	L.F.	\$ 12.00	5	\$ 60.00
5	Tack Coat (9)	GAL.	\$ 2.73	3,100	\$ 8,461.64
6	Superpave, Type S3 (PG 64-22 OK) DEEP PATCH	TON	\$ 133.81	500	\$ 66,905.00
7	Superpave, Type S5 (PG 64-22 OK)	TON	\$ 118.50	5,015	\$ 594,277.50
8	1.5 to 2.0 in. Full Mill (6)	S.Y.	\$ 3.57	36,470	\$ 130,197.90
9	8" Curb & Gutter (1,5,10)	L.F.	\$ 60.00	5	\$ 300.00
10	Remove Sidewalk (6)	S.Y.	\$ 11.00	29	\$ 319.00
11	3000 PSI Concrete 4" Sidewalk (8,10)	S.Y.	\$ 65.00	20	\$ 1,300.00
12	3000 PSI Concrete Sidewalk Ramps (8,10)	S.Y.	\$ 94.00	9	\$ 846.00
13	Detectable Warning Surface	S.F.	\$ 38.00	10	\$ 380.00
14	Slab Sod (4)	S.Y.	\$ 3.50	3	\$ 10.50
15	Remove Pavement Full Depth (6)	S.Y.	\$ 10.00	1,600	\$ 16,000.00
16	TRAFFIC STRIPE (PLASTIC)(4" WIDE)	L.F.	\$ 0.45	10,260	\$ 4,617.00
17	TRAFFIC STRIPE (PLASTIC)(6" WIDE)	L.F.	\$ 1.31	2,200	\$ 2,882.00
18	TRAFFIC STRIPE (PLASTIC)(8" WIDE)	L.F.	\$ 1.45	645	\$ 935.25
19	TRAFFIC STRIPE (PLASTIC)(24" WIDE)	L.F.	\$ 3.84	335	\$ 1,286.40
20	TRAFFIC STRIPE (PLASTIC)(ARROWS)	EA	\$ 164.85	10	\$ 1,648.50



### SUB-TOTAL

15% contingency

6% construction engineering

### TOTAL ESTIMATE:

**\$930,506.69**

**\$139,576.00**

**\$55,830.40**

**\$1,125,913.09**