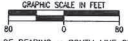
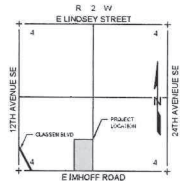


FINAL PLAT
OF
COLERAINE MULTIFAMILY
A PLANNED UNIT DEVELOPMENT
A PART OF THE SW/4 OF SECTION 4, T8N, R2W, I.M.
NORMAN, CLEVELAND COUNTY, OKLAHOMA

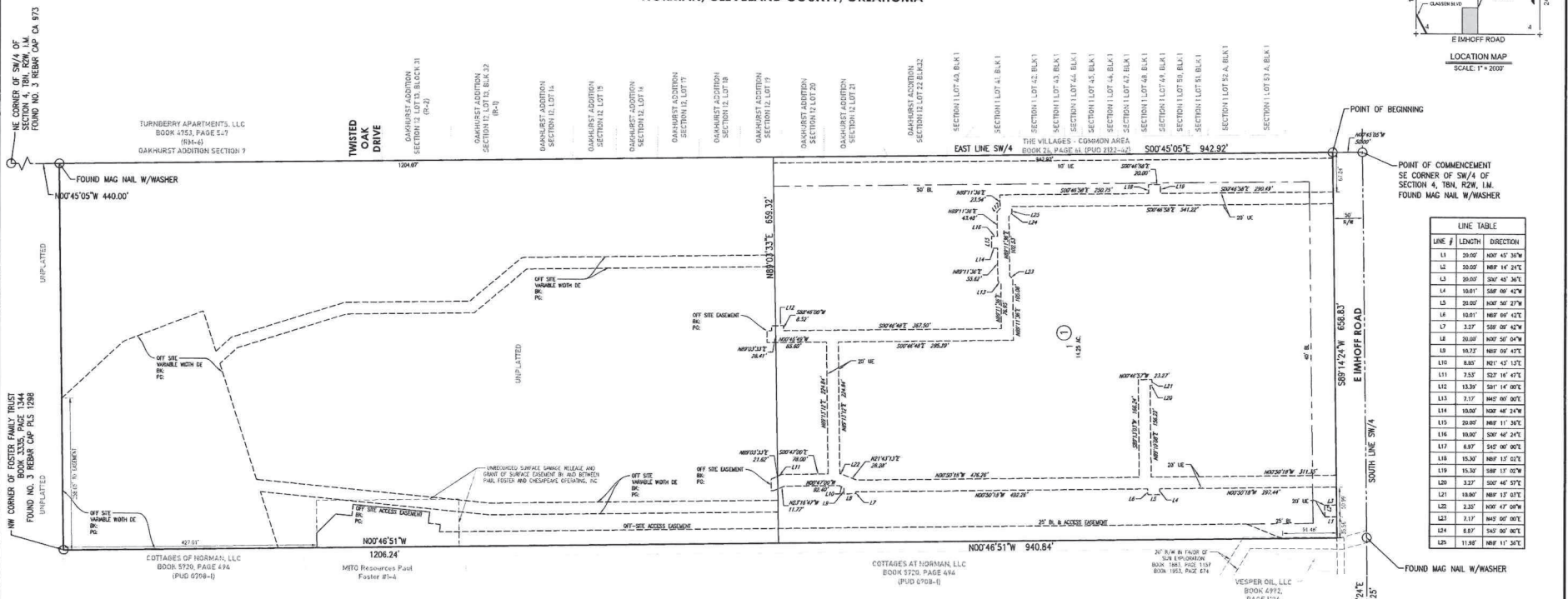
SCALE: 1" = 80'



BASIS OF BEARING = SOUTH LINE OF THE SW/4 OF SECTION 4, T8N, R2W, I.M. (S89°14'24"E)



LOCATION MAP
SCALE: 1" = 200'



LINE #	LENGTH	DIRECTION
L1	20.00'	N00°45'05"W 440.00'
L2	10.00'	N89°14'24"E 100.00'
L3	10.00'	S89°14'24"E 100.00'
L4	10.00'	S89°14'24"E 100.00'
L5	10.00'	S89°14'24"E 100.00'
L6	10.00'	S89°14'24"E 100.00'
L7	10.00'	S89°14'24"E 100.00'
L8	10.00'	S89°14'24"E 100.00'
L9	10.00'	S89°14'24"E 100.00'
L10	10.00'	S89°14'24"E 100.00'
L11	10.00'	S89°14'24"E 100.00'
L12	10.00'	S89°14'24"E 100.00'
L13	10.00'	S89°14'24"E 100.00'
L14	10.00'	S89°14'24"E 100.00'
L15	10.00'	S89°14'24"E 100.00'
L16	10.00'	S89°14'24"E 100.00'
L17	10.00'	S89°14'24"E 100.00'
L18	10.00'	S89°14'24"E 100.00'
L19	10.00'	S89°14'24"E 100.00'
L20	10.00'	S89°14'24"E 100.00'
L21	10.00'	S89°14'24"E 100.00'
L22	10.00'	S89°14'24"E 100.00'
L23	10.00'	S89°14'24"E 100.00'
L24	10.00'	S89°14'24"E 100.00'
L25	10.00'	S89°14'24"E 100.00'

STORM DRAINAGE DETENTION FACILITY EASEMENT

Drainage Detention Facility Easements are hereby established as shown to provide for Detention of Storm Surface Water and constructed as approved by the City Engineer. All maintenance within the Drainage Detention Facility Easement shall be the right, duty and responsibility of the Property Owners Association in the plat of COLERAINE MULTIFAMILY; however, if maintenance is neglected or subject to other unusual circumstances and is determined to be a hazard or threat to public safety by the City, corrective maintenance may be performed by the governing jurisdiction with costs assessed to and born upon said Property Owners Association. Officials representing the Public Works Department, shall have the right to enter upon the easement for purposes of periodic inspection and/or corrective maintenance of the facility. Upon receiving written approval from the Public Works Department, Property Owners Association may construct improvements within the easement, provided the improvement does not interfere with the function of the Detention Facility.

- NOTES**
- This plat of survey meets the Oklahoma Minimum Standards for the Practice of Land Surveying as adopted by the Oklahoma State Board of Licensure for Professional Engineers and Land Surveyors and that said Final Plat complies with the requirements of Title 11, Section 41-108 of the Oklahoma State Statutes.
 - Monuments shall be as follows:
Magnetic Nail with Washer stamped "CIA CA973" for all Paved Surfaces or 3/8" Iron Rod with a Plastic Cap stamped "CIA CA973"
 - Any addresses shown on this plat were accurate at the time this plat was filed. Addresses are subject to change and should never be relied upon in place of legal description.

LEGEND

EX. EXISTING
R/W RIGHT-OF-WAY
BL. BUILDING LIMIT LINE
UE. UTILITY EASEMENT
DE. DRAINAGE EASEMENT

FINAL PLAT COLERAINE MULTIFAMILY A PLANNED UNIT DEVELOPMENT <small>200 Frank Turner Blvd, Norman, Oklahoma 73061</small>		SHEET NO.: 2 OF 2 DATE: 04/27/2026 PROJECT NO.: 25603902
Crafton Tull <small>an electronic engineering & land surveying company</small> <small>401 W. 23rd St., Suite 200, Norman, OK 73061</small> <small>www.craftontull.com</small>		