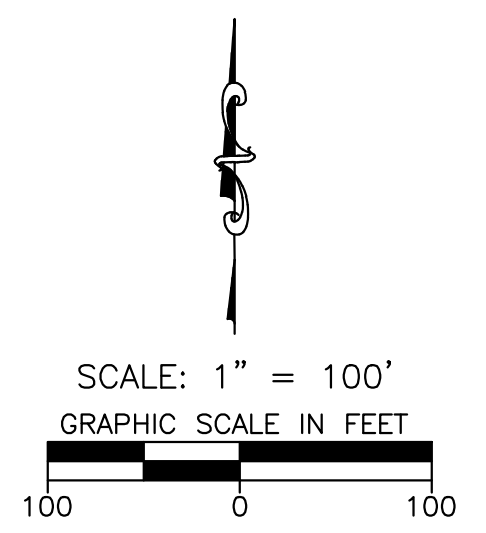
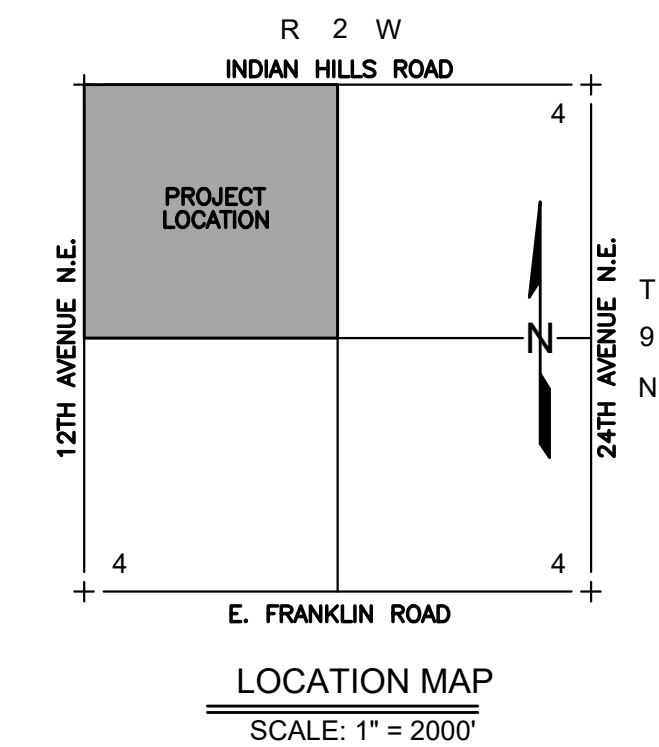


CONCEPTUAL SITE PLAN
OF
THE SHOPPES AT INDIAN HILLS
A PART OF THE NW/4 OF
SECTION 4, T9N, R2W, I.M.
NORMAN, CLEVELAND
COUNTY, OKLAHOMA



LINE #	LENGTH	DIRECTION
L1	103.14'	N75°33'54"E
L2	40.00'	N00°15'08"W

LOT COUNT:	
COMMERCIAL	7 LOTS
AGRICULTURAL	1 LOT
TOTAL ACRES	156.91

LEGAL DESCRIPTION

A tract of land situated within the Northwest Quarter (NW/4) of Section Four (4), Township Nine North (T9N), Range Two West (R2W) of the Indian Meridian (I.M.), Norman, Cleveland County, Oklahoma, being more particularly described as follows:

COMMENCING at the Northwest corner of said NW/4; thence N89°59'22"E along the North line of said NW/4 a distance of 150.00 feet to the POINT OF BEGINNING; thence continuing

N89°59'22"E along said North line a distance of 2490.55 feet; thence S00°13'11"E along the East line of said NW/4 a distance of 2643.68 feet; thence N89°59'26"W along the South line of said NW/4 a distance of 2589.05 feet; thence N00°15'08"W a distance of 927.07 feet; thence N38°24'28"E a distance of 64.03 feet; thence N00°15'08"W a distance of 50.00 feet; thence N22°03'13"W a distance of 107.70 feet; thence N00°15'08"W a distance of 1450.00 feet; thence N75°33'54"E a distance of 103.14 feet; thence N00°15'08"W a distance of 40.00 feet to the POINT OF BEGINNING.

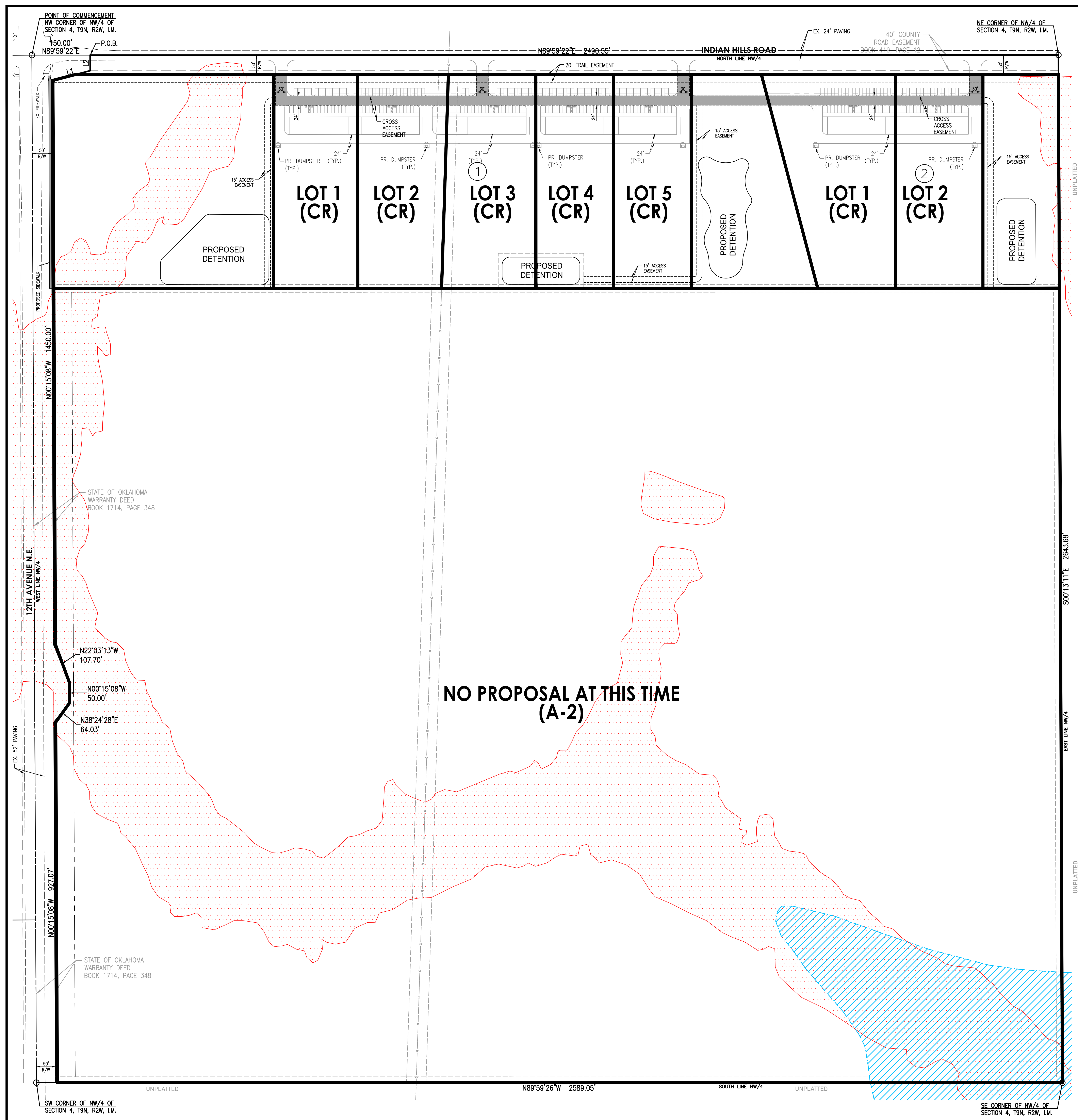
Said tract contains 6,835,100 Sq Ft or 156.91 Acres, more or less.

THE SHOPPES AT INDIAN HILLS - CONCEPTUAL SITE PLAN

300 Pointe Parkway Blvd.
Tulsa, Oklahoma 74309

Crafton Tull
architecture | engineering | surveying
405.787.6270 | 405.787.6276 | www.craftontull.com

SHEET NO.: 2 OF 2
DATE: 08/07/23
PROJECT NO.: 23600800



LEGEND

BL	BUILDING LIMIT LINE
DE	DRAINAGE EASEMENT
UE	UTILITY EASEMENT
SE	SIDEWALK EASEMENT (3')
PE	EX. PIPELINE EASEMENT
EX	EXISTING
L.N.A.	LIMITS OF NO ACCESS
R/W	RIGHT-OF-WAY
(DR.)	DRAINAGE RELATED COMMON AREA
	STREAM PLANNING CORRIDOR PER CITY MAPPING

COMMON AREAS:

C/A 'A'	7.19 ACRES
C/A 'B'	3.19 ACRES
C/A 'B'	2.47 ACRES
TOTAL C/A (SITE)	12.85 ACRES

OWNER/DEVELOPER
SHAZ INVESTMENT GROUP, LLC
2252 N. BROADWAY
MOORE, OK 73160
PH: 405.692.2222

DRAWN BY: SHAZ INVESTMENT GROUP, LLC; CHECKED BY: SHAZ INVESTMENT GROUP, LLC; DATE: 08/07/23