

PRELIMINARY PLAT  
of

# HUETTNER INDUSTRIAL PARK

BEING A PART OF THE NE 1/4, SEC. 2, T9N, R3W, IM  
AN ADDITION TO NORMAN, CLEVELAND COUNTY, OK  
A REPLAT OF LOT 2, BLOCK 1, VALUE PLACE ADDITION,  
A PLANNED UNIT DEVELOPMENT

Curve #	Length	Radius	Tangent	Chord Length	Chord Direction	Bearing
C1	13.86	25.00'	9.68'	12.91'	N31°59'11"W	095°59'29"
C2	132.27	50.00'	151.87'	94.97'	N64°48'11"E	143°30'01"
C3	36.54	160.00'	18.40'	36.34'	N90°03'04"W	007°56'13"
C4	62.24	100.00'	32.16'	61.44'	S11°30'07"W	007°30'07"
C5	110.78	60.00'	79.29'	95.89'	N73°17'44"W	108°46'19"
C6	80.28	50.00'	47.44'	74.42'	N17°52'22"E	016°39'37"
C7	72.14	60.00'	41.15'	67.87'	S88°48'15"E	088°57'14"
C8	61.69	100.00'	31.86'	60.71'	S72°31'54"E	032°20'25"
C9	0.55	100.00'	0.28'	0.55'	N89°30'17"E	007°18'34"

NOTES:

- All construction shall conform to the City of Norman, Oklahoma, and all utility easements shall be shown in accordance with the City of Norman, Oklahoma, and all utility easements shall be shown in accordance with the City of Norman, Oklahoma.
- Maintenance of all common areas and drainage easements within the Huettner Industrial Park shall be the responsibility of the property owners. The City of Norman, Oklahoma, shall not be responsible for the maintenance of the common areas or drainage easements within the Huettner Industrial Park. The City of Norman, Oklahoma, shall not be responsible for the maintenance of the common areas or drainage easements within the Huettner Industrial Park.
- Damage detection utility easements are hereby established as shown to provide for detection of storm surface water and constructed as approved by the City of Norman, Oklahoma. The City of Norman, Oklahoma, shall not be responsible for the maintenance of the common areas or drainage easements within the Huettner Industrial Park. The City of Norman, Oklahoma, shall not be responsible for the maintenance of the common areas or drainage easements within the Huettner Industrial Park.

OWNER / DEVELOPER

JOHN MICHOLS  
3001 S. SERVICE RD  
MOORE, OK 74109  
405-344-1501

ENGINEER

JOHNSON & ASSOCIATES, INC.  
1 E. SHERIDAN AVE., SUITE 200  
OKLAHOMA CITY, OKLAHOMA 73104  
(405) 235-8075

PRELIMINARY PLAT

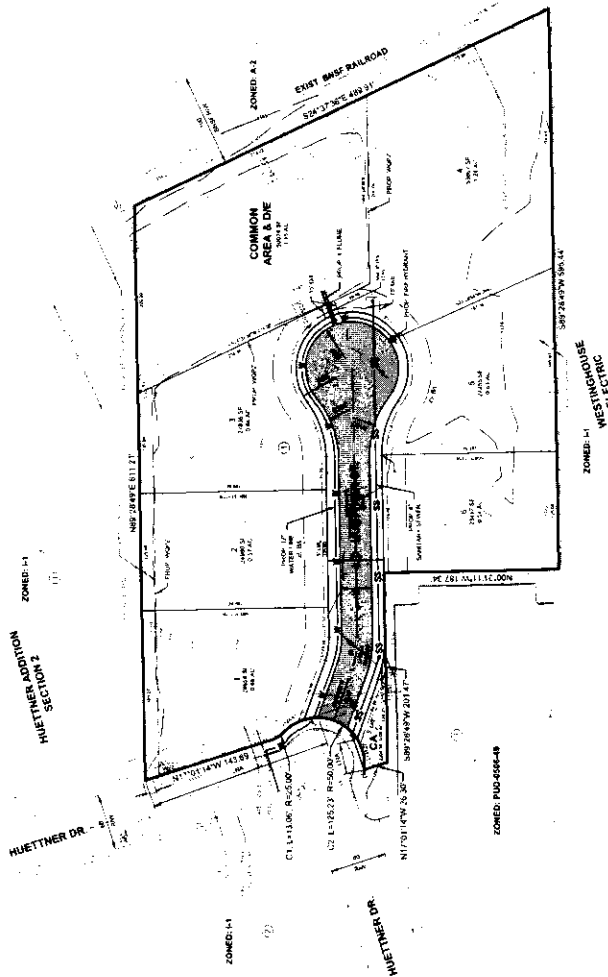
of

## HUETTNER INDUSTRIAL PARK

JOHNSON & ASSOCIATES, INC.  
1 E. SHERIDAN AVE., SUITE 200  
OKLAHOMA CITY, OK 73104  
(405) 235-8075



Copyright © 2017 Johnson & Associates, Inc. SHEET 1 OF 1



UNDERGROUND UTILITY PROTECTION EASEMENT NOTES

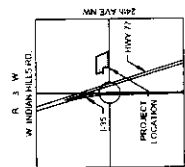
- There shall be no existing, grading, construction or other activity within the easement area that would interfere with the installation, maintenance, or repair of the utility lines shown in accordance with Section 10-11-10 of the Norman City Code.
- The WOPF is subject to protective easements as set forth in the land records and the utility easement and use of the easement.

UTILITY LEGEND

- EXISTING WATER LINE
- EXISTING SANITARY SEWER LINE
- PROPOSED WATER LINE
- PROPOSED SANITARY SEWER LINE
- PROPOSED STORM SEWER LINE
- PROPOSED FIRE HYDRANT

LEGEND

- POC = POINT OF COMMENCEMENT
- BL = BUILDING LIMIT LINE
- DE = DRAINAGE EASEMENT
- DUE = DRAINAGE EASEMENT FACILITY
- PSWUE = PRIVATE STREET PUBLIC UTILITY EASEMENT
- STAT RW = STATUTORY RIGHT OF WAY
- CA = COMMON AREA
- BA = BUILDING LIMIT LINE
- DE = DRAINAGE EASEMENT
- DUE = DRAINAGE EASEMENT FACILITY
- PSWUE = PRIVATE STREET PUBLIC UTILITY EASEMENT



LOCATION MAP  
SCALE: 1"=2000'

LEGAL DESCRIPTION

Block 1, Section 2, T9N, R3W, IM, NE 1/4, SEC. 2, T9N, R3W, IM, CLEVELAND COUNTY, OKLAHOMA (NE 1/4 of Section 1, Inc. 62).

PLAT ADDITION A REPLAT OF LOT 2, BLOCK 1, VALUE PLACE ADDITION, A PLANNED UNIT DEVELOPMENT, TO THE CITY OF NORMAN, CLEVELAND COUNTY, OKLAHOMA, BEING MORE PARTICULARLY DESCRIBED AS FOLLOWS:

Lot 2 (2.14 Acres) in Block One (11.01 VALUE PLACE ADDITION) A REPLAT OF LOT 2, BLOCK 1, VALUE PLACE ADDITION, A PLANNED UNIT DEVELOPMENT, TO THE CITY OF NORMAN, CLEVELAND COUNTY, OKLAHOMA, BEING MORE PARTICULARLY DESCRIBED AS FOLLOWS: