

LAND USE MAPS

How are the Character Area & Land Use maps used?

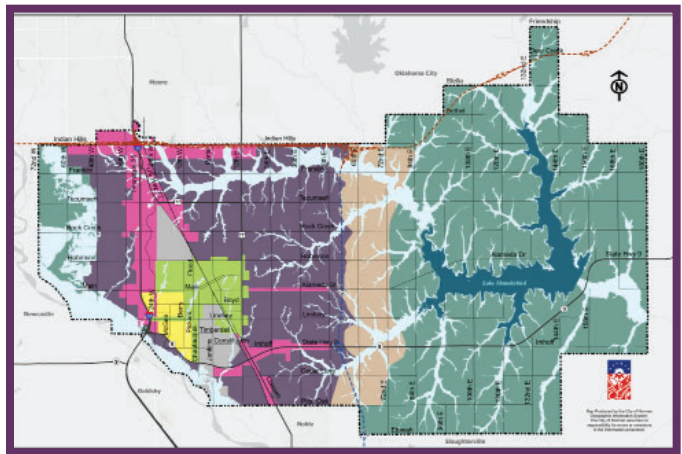
The Character Areas and Land Use maps are based on population projections, economic trends, environmental analyses, and public input. As explained on page 28, the amount of urban land planned is more than the projected need to provide market flexibility and avoid creating a false land shortage. Many areas shown in the Character Areas and Land Use maps are unlikely to fully develop in the 20-year time frame generally addressed by this plan.

TWO MAPS WORKING TOGETHER

CHARACTER AREAS

How the built environment fits together.

- How community features such as streets, parks, water, sewer, and stormwater connect and transition between neighborhoods.
- Defined by how an area looks and functions.
- Policies guiding development.

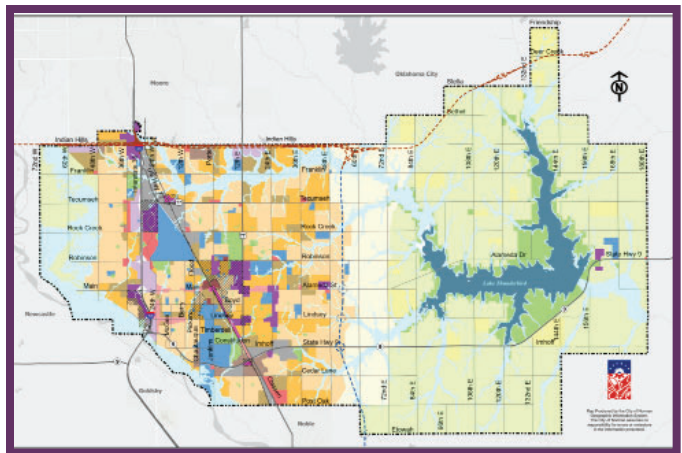


Full map on page 41.

LAND USE

How land should be developed, and in what way.

- Future desired use for a parcel of land.
- More specific vision for how sites will develop.
- What specific land uses look like, including building types and landscaping.



Full map on page 59.