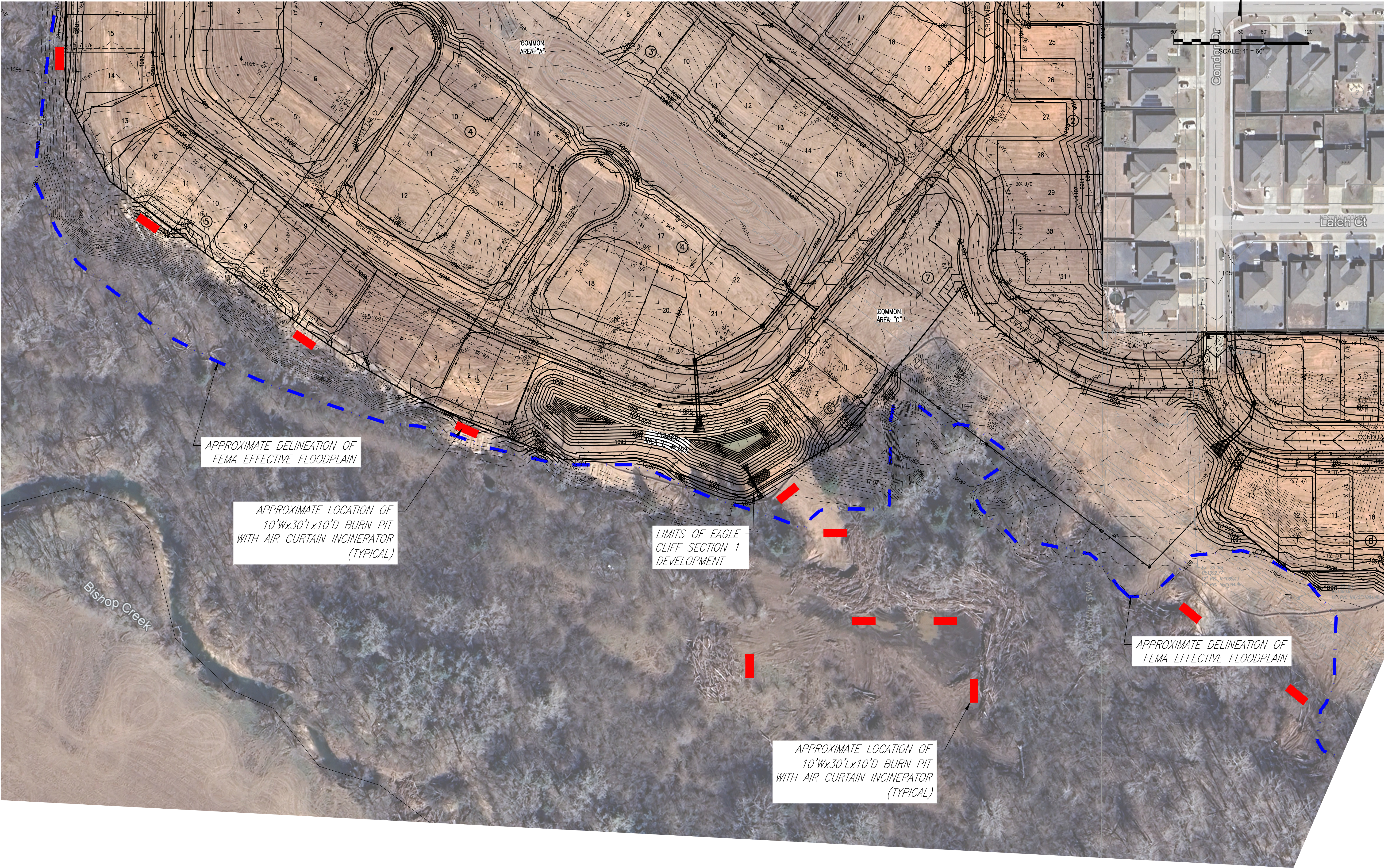


NOTE:
BURN PITS SHOWN OUTSIDE OF FLOODPLAIN ARE
FOR INFORMATION ONLY AND ARE NOT A PART OF
THE FLOODPLAIN ACTIVITY PERMIT APPLICATION.

SITE & GRADING PLAN FOR FLOODPLAIN ACTIVITY PERMIT
EAGLE CLIFF WEST SECTION 1
A PART OF THE N.E. ¼ OF SECTION 16, T13N, R5W, I.M.
OKLAHOMA CITY, CANADIAN COUNTY, OKLAHOMA



© SMC CONSULTING ENGINEERS, P.C. ALL
RIGHTS RESERVED THESE DOCUMENTS MAY
NOT BE USED FOR ANY PURPOSES
WITHOUT PRIOR WRITTEN PERMISSION FROM
SMC CONSULTING ENGINEERS, P.C.

EAGLE CLIFF WEST SECTION 1

JENKINS AVE. & POST OAK DR.
NORMAN, OKLAHOMA

SMC Consulting Engineers, P.C. 615 N. Lincoln Blvd., Suite 200 Norman, Oklahoma 73069 Phone: 405-232-7715 Fax: 405-232-7659 Website: www.smcok.com	OKLAHOMA CERTIFICATE OF AUTHORIZATION NO. CA 464 EXP. 06/30/2025	Revision	By	Date	Project
No.	1	1	1	1	1
Revision					
PROJECT ADDITIONAL INFORMATION					
PROJECT NO.: 6552.01					
DATE: 05/22/25					
SCALE: 1" = 60'					
DRAWN BY: SY					
ENGINEER: CHRISTOPHER D. ANDERSON					
P.E. NUMBER: 18288					

SITE & GRADING PLAN
FOR FLOODPLAIN
ACTIVITY PERMIT

SHEET NO.
EXHIBIT 1