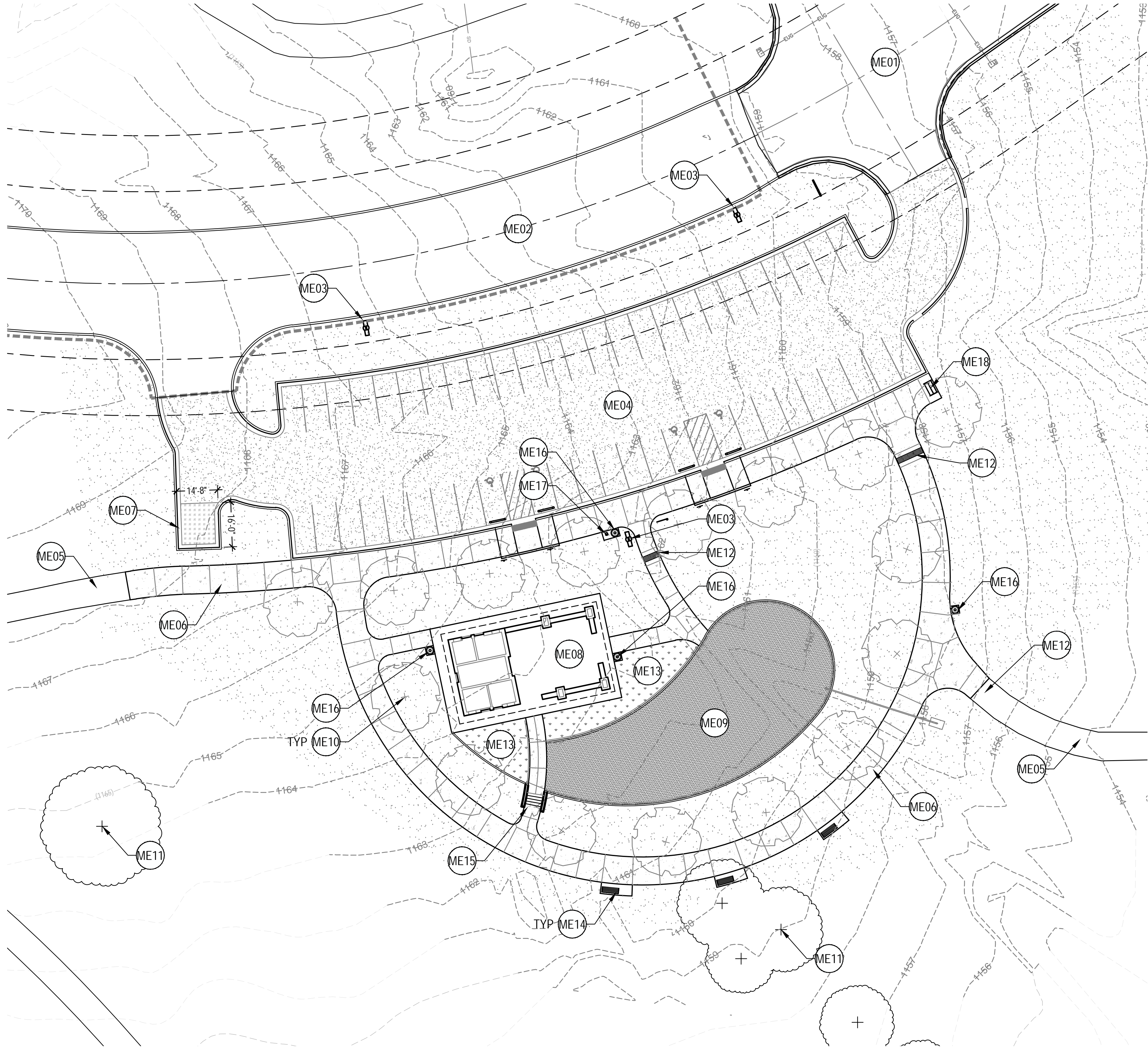


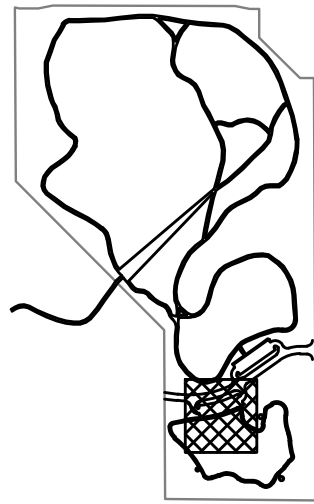
- LEGEND
- FLOODPLAIN / WATERWAY, REMOVE TREE DEADFALL AND UNDERGROWTH
 - EXISTING TOPOGRAPHY 1' CONTOURS
 - EXISTING SITE DRAINAGE
 - EXISTING TRAIL SYSTEM
 - PROPERTY BOUNDARY

1 SITE KEY PLAN
1"=150'-0"





1 SOUTH MATERIALS ENLAREMENT PLAN
1"=20'-0"



KEY PLAN

LEGEND

- EXISTING TREE TO REMAIN, PROTECT IN PLACE
- CONCRETE SIDEWALK, REF. DETAIL 1/L2.01
- ASPHALT PARKING LOT PAVEMENT, REF. DETAIL 1/C6.03
- REINFORCED DUMPSTER PAD PAVEMENT (14'-8"W x 16'-0"L) REF. DETAIL 1/C6.03:
- SOLAR LIGHT POLE FIXTURE (ADD ALTERNATE), REF. DRAWINGS L4.01 & L4.02
- SOLID SOD COMMON BERMUDAGRASS

KEYNOTES - MATERIALS ENLARGEMENT PLAN

ME01	EXISTING ROAD 'CENTURION PARKWAY' FROM 36th AVENUE SE
ME02	PLANNED ROAD EXTENSION 'CENTURION PARKWAY', BY OTHERS (NOT IN CONTRACT)
ME03	SOLAR LIGHT POLE FIXTURES (ADD ALTERNATE), REF. DRAWINGS L4.01 & L4.02
ME04	PROPOSED ASPHALT PARKING LOT, FIFTY (50) SPACES; FOUR (4) HANDICAP WITH ONE (1) VAN ACCESSIBLE
ME05	EXISTING CONCRETE TRAIL (10' WIDTH)
ME06	NEW CONCRETE SIDEWALK ALONG PROPOSED PARKING LOT AND AROUND ALL NEW FEATURES (10' WIDTH), REF. DETAIL 1/L2.01
ME07	REINFORCED CONCRETE PAD (16'W x 12'D), REF. DETAILS 1/C6.03
ME08	RESTROOM / SHELTER BUILDING, REF. ARCHITECTURAL DRAWINGS
ME09	PLAYGROUND EQUIPMENT AND SURFACING (NOT IN CONTRACT), REF. DRAWING L1.01
ME10	DECIDUOUS SHADE CANOPY TREE (NOT IN CONTRACT)
ME11	EXISTING TREE TO REMAIN, PROTECT IN PLACE DURING CONSTRUCTION, SEE TREE PROTECTION FENCING DETAIL 2/C6.01
ME12	SIDEWALK DRAIN COVER (2' WIDTH), REF. DETAIL 4/L2.01
ME13	ARTIFICIAL TURF, SOUTH OF RESTROOM (NOT IN CONTRACT), REF. DRAWING L1.01
ME14	CONCRETE PAD 11'x4' FOR BENCH, REF. DETAIL 2/L2.01, BENCH TO BE FURNISHED AND SURFACE MOUNTED BY OTHERS (NOT IN CONTRACT)
ME15	CONCRETE STEPS WITH LOW WING WALLS, REF. DETAIL 2&3/L2.02
ME16	CONCRETE PAD 3'x3' FOR TRASH RECEPTACLE, REF. DETAIL 6/L2.01, TRASH RECEPTACLE TO BE FURNISHED AND SURFACE MOUNTED BY OTHERS (NOT IN CONTRACT)
ME17	CONCRETE PAD 3'x3' FOR DOG WASTE STATION, REF. DETAIL 7/L2.01, DOG WASTE STATION TO BE FURNISHED AND SURFACE MOUNTED BY OTHERS (NOT IN CONTRACT)
ME18	BIKE RACK TO BE FURNISHED AND SURFACE MOUNTED BY OTHERS (NOT IN CONTRACT)

REVISIONS:

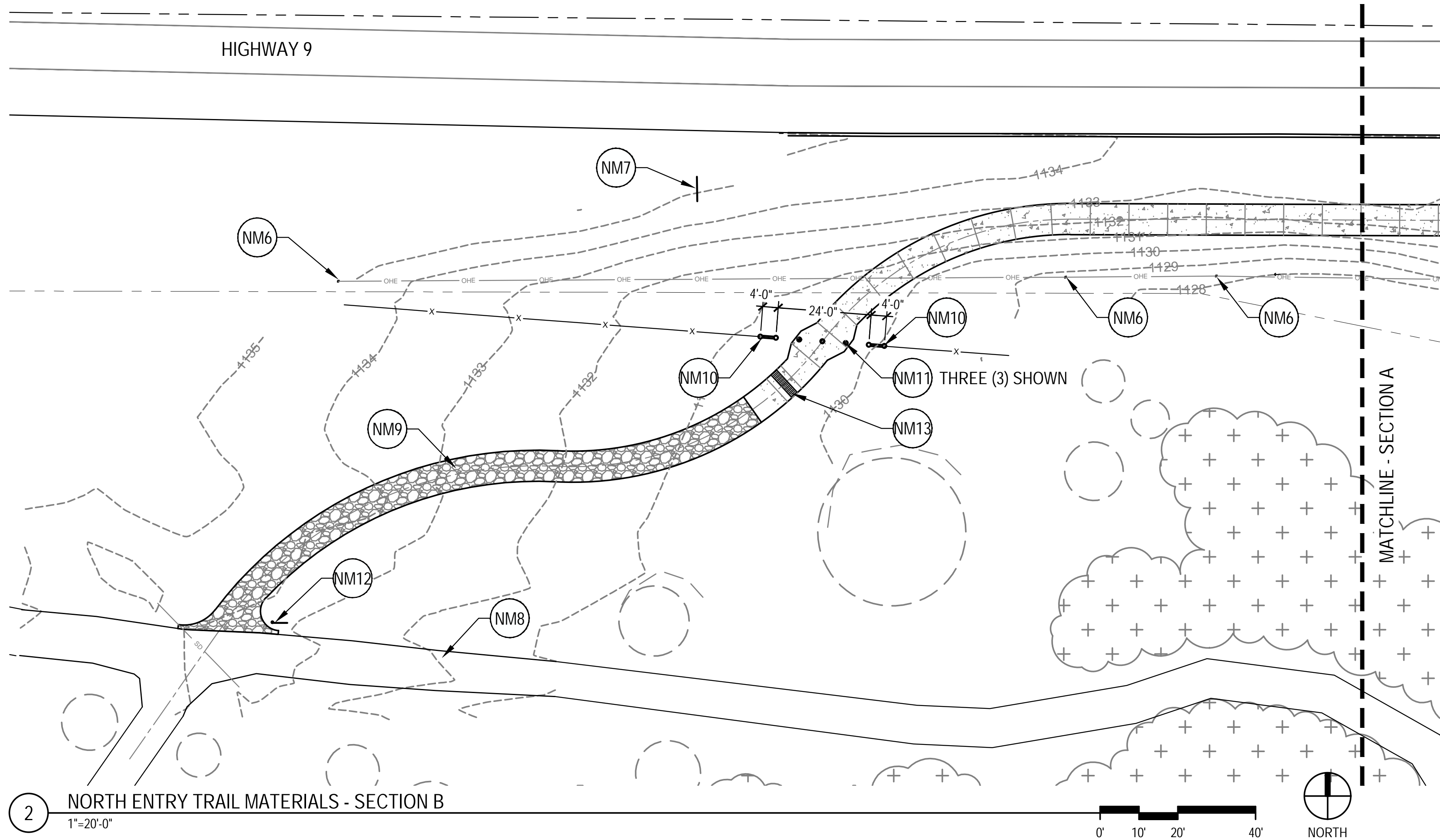
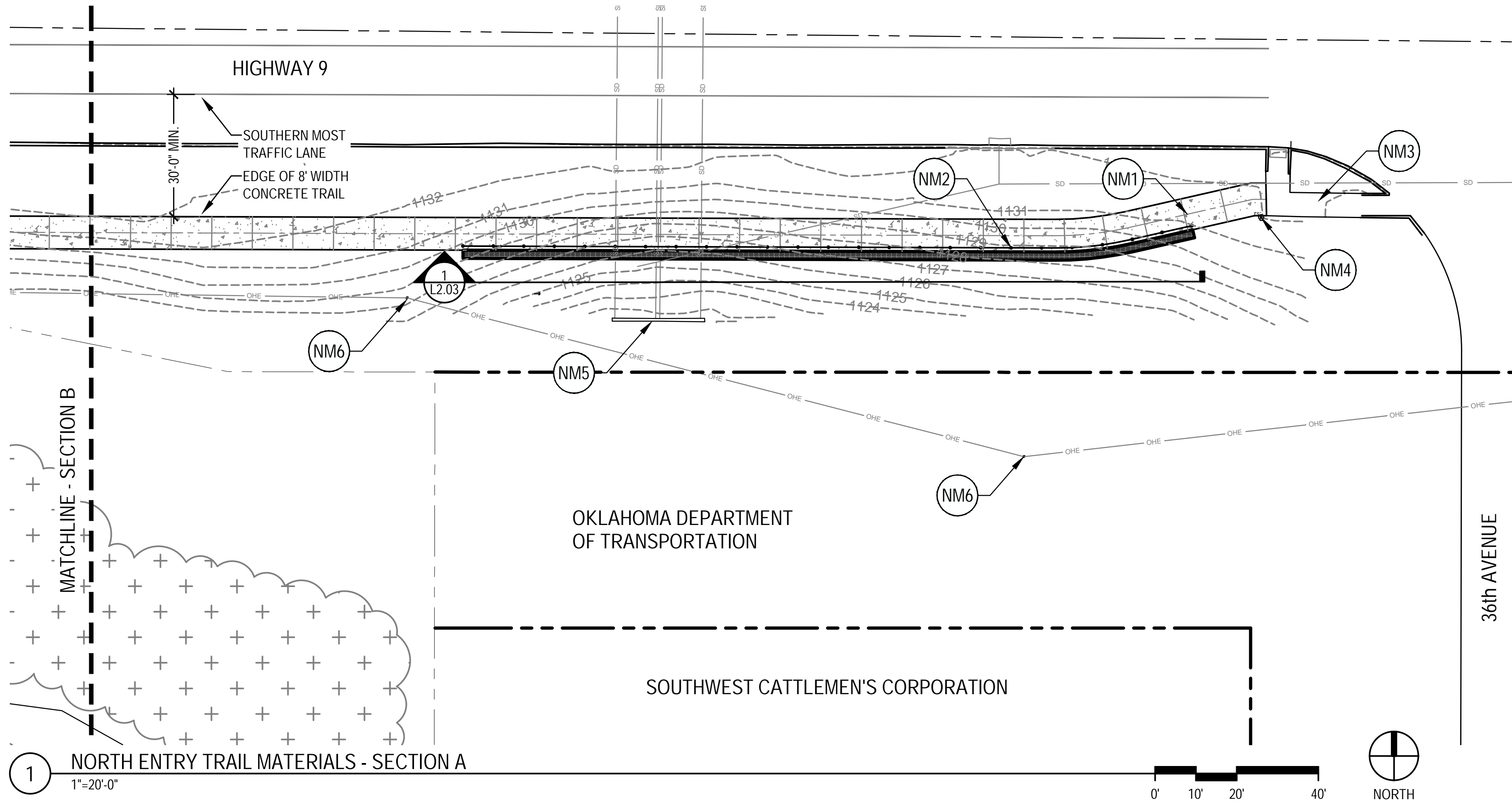
PROFESSIONAL SEAL:

ISSUE DATE:
December 9, 2024

90% CONSTRUCTION DOCUMENTS
DRAWN BY: RWR CHECKED BY: JJB
SHEET NAME:
SOUTH MATERIALS
ENLARGEMENT PLAN
SHEET NUMBER:

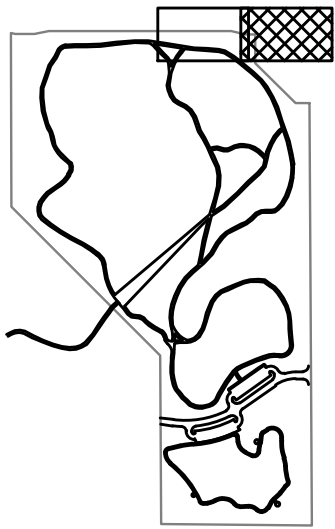
C 3.01

DRAWING IS NOT TO SCALE
UNLESS PRINTED ON SHEET
SIZE: 22"x34" (ANSI D)

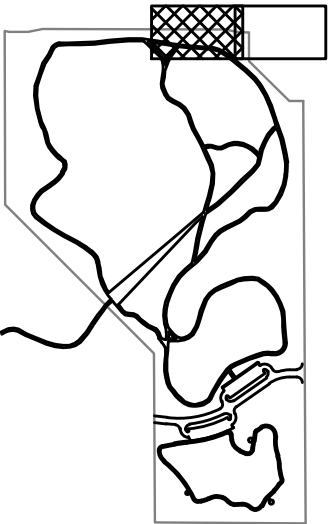


- LEGEND:
- EXISTING TOPOGRAPHY
 - 1' CONTOURS
 - PROPOSED CONCRETE TRAIL, 8' WIDTH, REF. DETAIL 2/L2.03
 - DECOMPOSED GRANITE TRAIL, 8' WIDTH, REF. DETAIL 5/L2.01
 - EXISTING TRAIL SYSTEM
 - PROPERTY BOUNDARY

KEYNOTES - MATERIALS ENLARGEMENT PLAN	
NM1	PROPOSED CONCRETE TRAIL, 8' WIDTH x 465 LINEAR FEET, REF. DETAIL 2/L2.03
NM2	RETAINING WALL AND ORNAMENTAL METAL FENCE (180 LF) ALONG SOUTH SIDE OF CONCRETE TRAIL, REF. DETAILS L2.03
NM3	EXISTING SIDEWALK AND CURB RAMPS AT INTERSECTION OF HIGHWAY 9 & 36th AVENUE
NM4	EXISTING CROSSWALK SIGNAL
NM5	EXISTING HEADWALL AT DRAINAGE CULVERT
NM6	EXISTING POWER POLES FOR OVERHEAD ELECTRIC
NM7	EXISTING SIGN ALONG HIGHWAY 9
NM8	EXISTING DECOMPOSED GRANITE TRAIL SYSTEM
NM9	PROPOSED DECOMPOSED GRANITE TRAIL, 8' WIDTH x 160 LINEAR FEET, REF. DETAIL 5/L2.01, MATCH EXISTING TRAIL COLOR
NM10	CUT 24'-0" WIDTH OPENING IN EXISTING BARB-WIRE FENCE, TERMINATE BARB-WIRE FENCE WITH TWO (2) NEW STEEL H-BRACES, PRODUCT EQUAL TO HB2.8041, WEBSITE: www.farmranchstore.com/fencing-shop/h-braces . SUBMIT PRODUCT INFORMATION FOR REVIEW AND APPROVAL. BRACE POSTS TO BE ANCHORED IN 12" DIA. x 36" DEPTH CONCRETED FOOTINGS. INSTALL PER MANUFACTURER'S RECOMMENDATIONS.
NM11	PROVIDE THREE (3) 12" DIA. x 18" DEPTH SONOTUBE BLOCK-OUTS, SPACED 6'-0" ON CENTER, AT BARB-WIRE FENCE THRESHOLD. BOLLARDS BY OWNER
NM12	PARK MAP SIGNAGE, REF. DRAWING G101
NM13	SIDEWALK DRAIN COVER (2' WIDTH), REF. DETAIL 4/L2.01



KEY PLAN



KEY PLAN