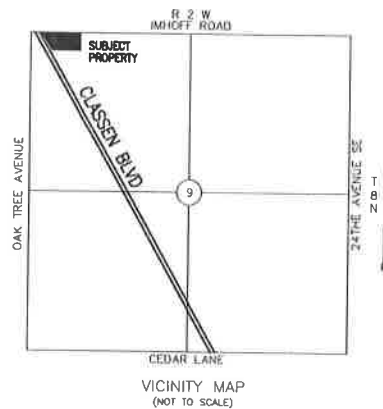
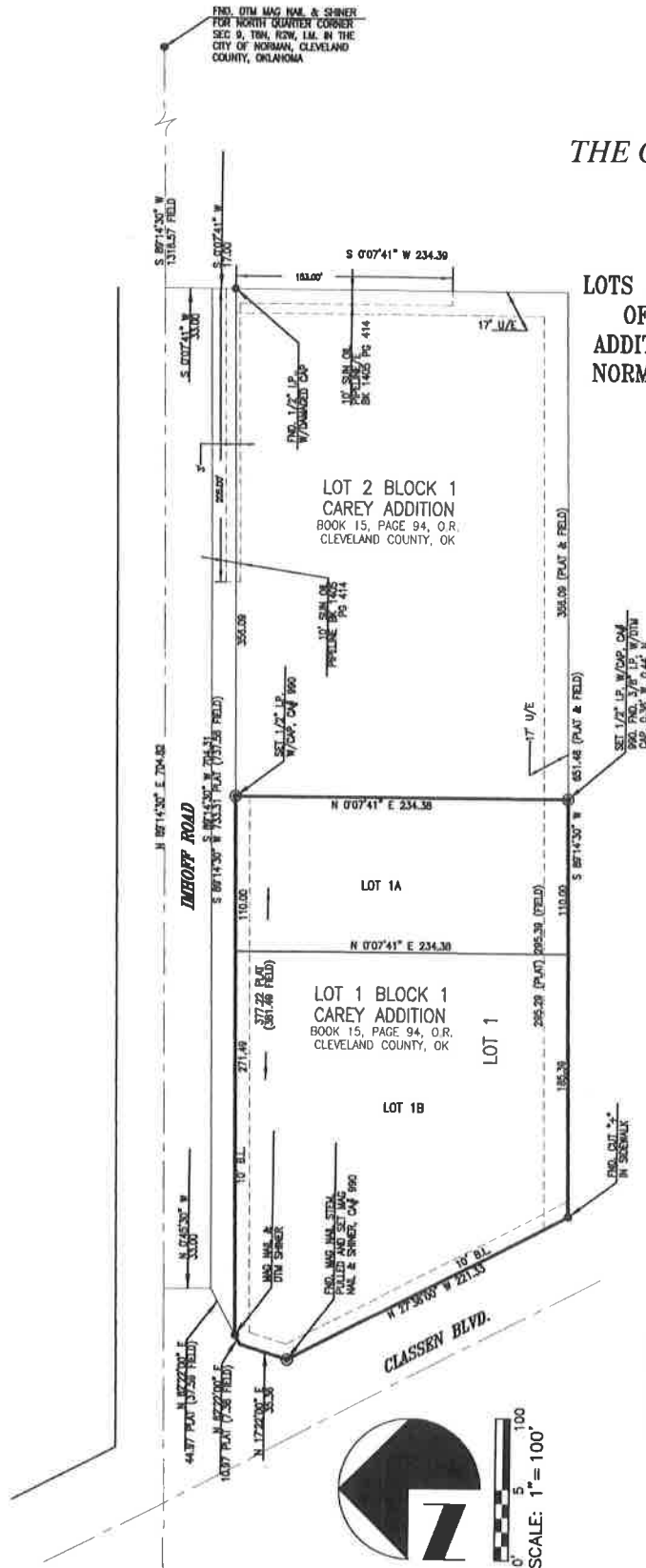


THE CAREY ADDITION, AMENDED  
SHORT FORM PLAT  
SFP-2223-2

LOTS 1A & 1B, BLOCK 1, BEING A REPLAT  
OF LOT 1, BLOCK 1 OF THE CAREY  
ADDITION, AN ADDITION TO THE CITY OF  
NORMAN, CLEVELAND COUNTY, OKLAHOMA



BASIS OF BEARINGS:

THE BEARING OF N 89°14'30" EAST AS  
SHOWN FOR THE CENTERLINE OF  
IMHOFF ROAD ON A PLAT OF CAREY  
ADDITION, BOOK 15, PAGE 94, WAS  
USED AS THE BASIS OF BEARINGS  
SHOWN HEREON.

SHEET 1 OF 3



THE CAREY ADDITION, AMENDED