

Festival Street Bollards Pilot Project Update

**Community Planning and Transportation
Committee**

May 23, 2024

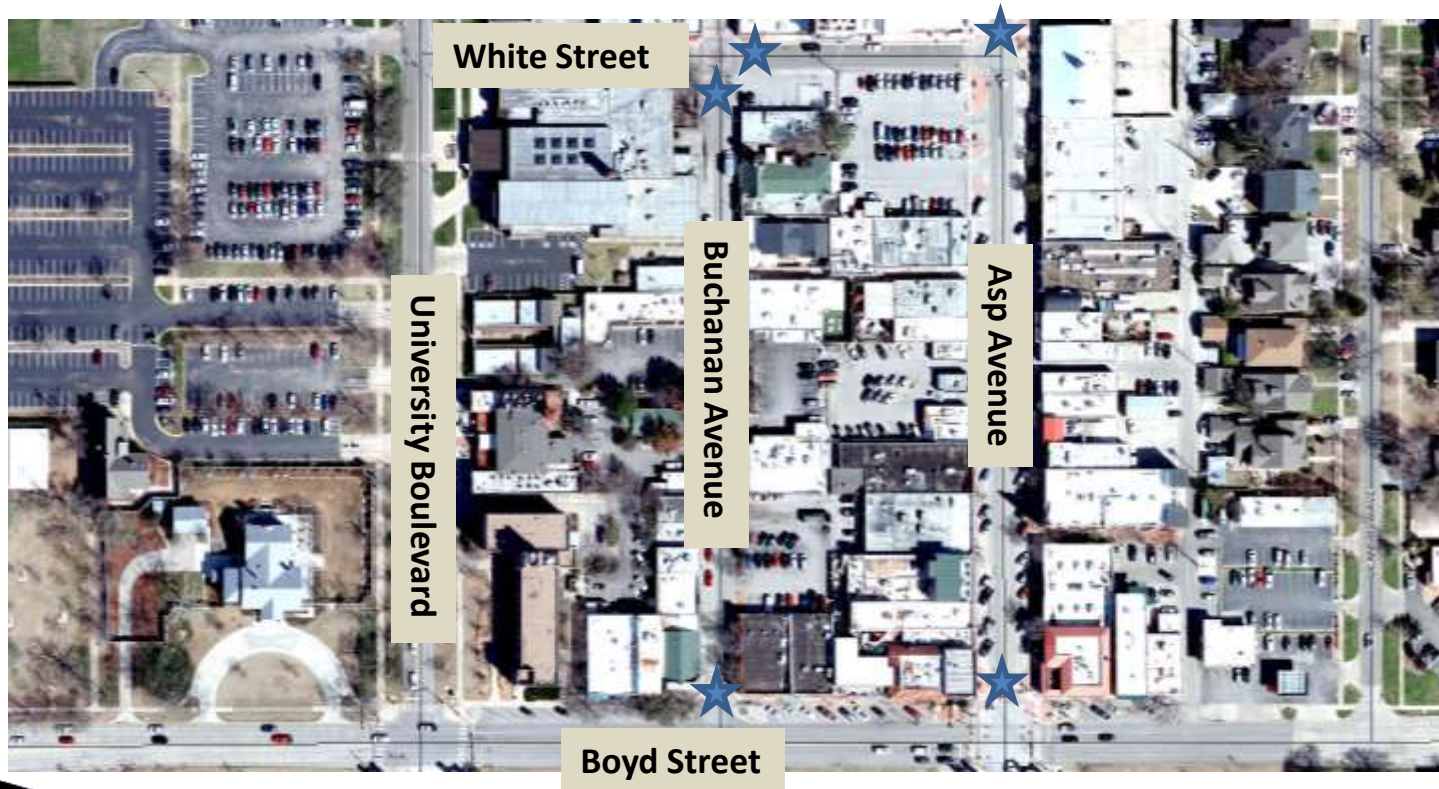


Agenda

- A review of the pilot location
- Preferred Bollard Type
- Discussion
- Next steps

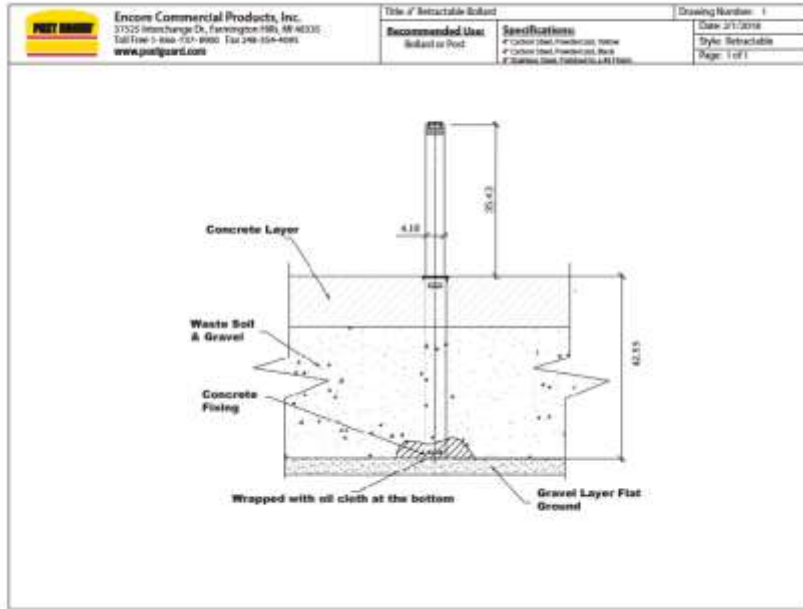


Pilot Location—Campus Corner



★ Location of Festival Street Bollards

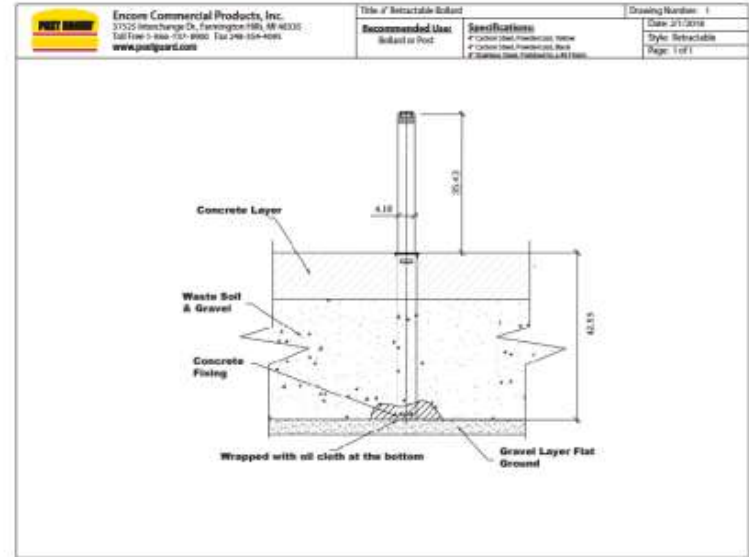
Preferred Option: Retractable Bollard



- The hole to be cored in the pavement is larger diameter and deeper
- The deeper and larger hole could be problematic with underground utility locations
- The bollards are stored in the street when not in use
- Larger footprint could be more safe than removable bollards
- Bollards were ordered and are currently housed at Traffic Division

Preferred Bollard Type

- Greater degree of safety for retractable bollards because of deeper hole
- No need to secure off-site storage for retractable bollards when not in use
- Retractable bollards likely deploy faster than removable bollards



Discussion

- Concerns previously raised by Campus Corner Merchants
- What is the schedule we are trying to meet with installation?
- Who will be able to raise and lower the bollards—who will have a key to the system?
- Who lowers the bollards following an event?



Next Steps

- Enter into a contract with a contractor for bollard installation
- Depending on who will be responsible for lowering the bollards either after an event or in the event of an emergency, there could be a need for some training on bollard operation



QUESTIONS?

