

Festival Street Bollards Pilot Project Update

**Community Planning and Transportation
Committee**

April 24, 2025

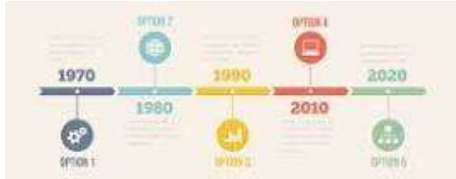


Agenda

- Timeline for Campus Corner Bollards pilot program
- Issues with in-street bollards
- Staff Discussions
- Alternatives to perform what needs to be done

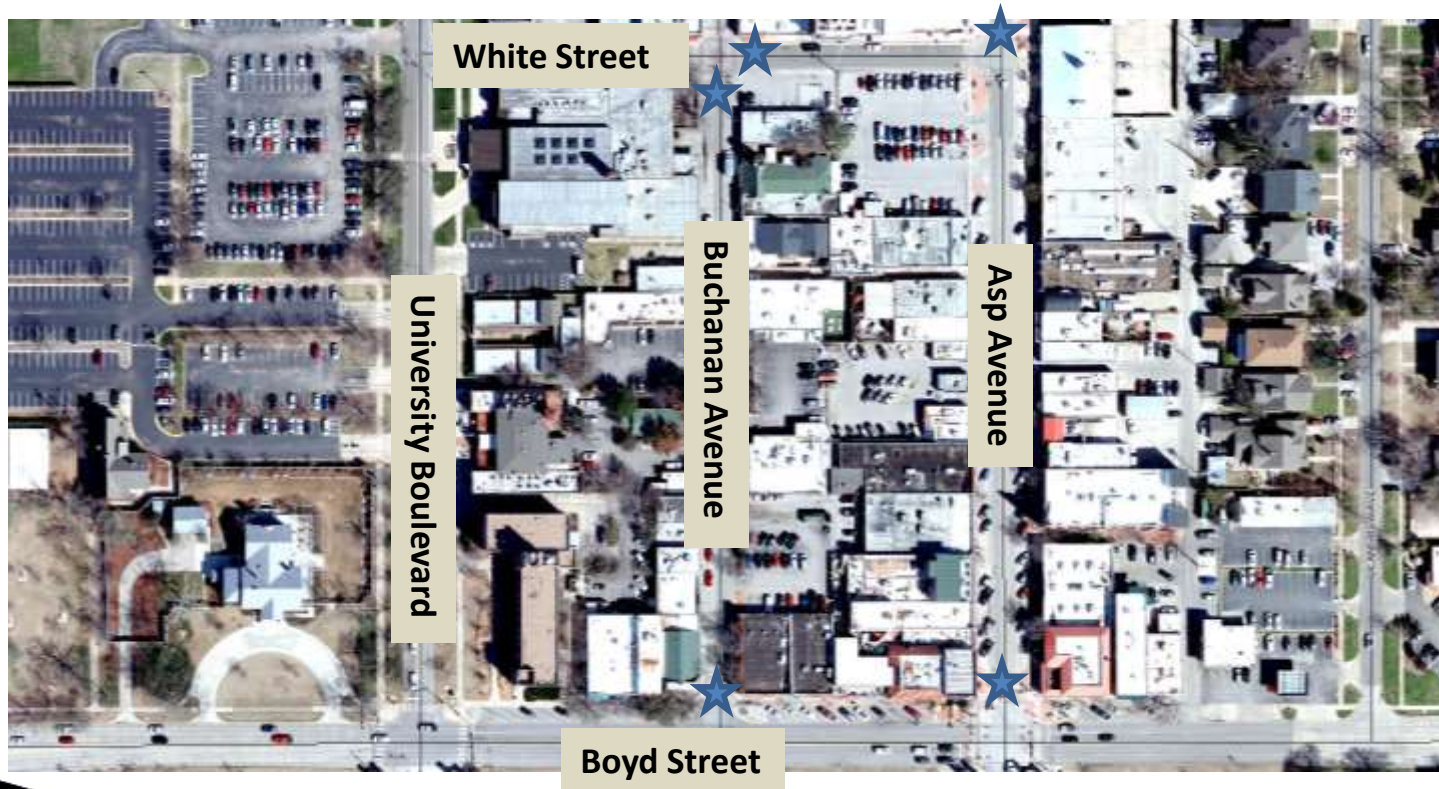


Timeline for Campus Corner Bollards



- Staff received request from Council to look into potential pilot program for installation of aesthetically pleasing bollards to replace some Type III barricades to close traffic on Campus Corner on game-days in April 2023 (BACA)
- Preferred Bollard type selected/Pilot Project funded in the FYE 2024 Budget
- Staff ordered materials and concrete maintenance/preparation performed at proposed bollard locations in summer 2023
- Subject was brought back to Council in May 2024 to provide update—this discussion included representative from Campus Corner Merchants
- Staff solicited quotes for bollard installation in May 2024 (CP&T)
- Project delayed following safety and feasibility concerns raised by first responders and merchants
- Multiple internal meetings between Police, Fire and Public Works following concerns raised in summer 2024

Pilot Location—Campus Corner



★ Location of Festival Street Bollards

Issues with Preferred Bollard Type



- Initially, the Campus Corner Merchants were concerned with who would have a key to the bollards and who would be responsible for raising the bollards before an event and lowering them following an event. ***Campus Corner Merchants Association is the event manager responsible for implementation of event aspects including game-day.***
- Fire/Police and emergency responders raised concerns that their response times could be compromised if they did not have a key to lower the bollards in the event of an emergency or if bollards malfunctioned.
- Security / access control: how many keys, who receives keys, who maintains inventory, and what happens if key is lost or stolen?
- It was becoming rather concerning that a system that required bollards to be physically raised and lowered could be problematic for many that need access to the closed areas at various times.

Issues with Preferred Bollard Type

- Then in January, New Orleans happened
- Concerns started being raised as to whether or not the preferred bollard type could prevent what happened in New Orleans and staff held internal discussions including NPD, NFD and PW leading to further investigation into options
- Conversations with the vendor made us aware that the bollards we had purchased would stop only a very small vehicle driving at slow speed and initial pilot project did not account for bollards off roadway leaving gaps in security.
- This revelation caused concerns with many that the bollards we purchased are not a feasible solution to the problem



Issues with Preferred Bollard Type

- Staff had further conversations with the vendor on what type of bollard could be utilized that would be traffic-rated
- Eventually, Staff was able to determine that options do exist for traffic-rated bollards. However, the size of the infrastructure required would be prohibitive given the number of underground utilities in the Campus Corner area and significantly more expensive to install and maintain.
- Finally, it should be pointed out that bollards closing the roadway will not prevent an episode like occurred in New Orleans where the roads were closed and the driver used the sidewalk to enter the area of interest. The exact same thing could happen in an attempt to close the Campus Corner area using bollards in the street.
- Bollards do not seem to be the proper solution to prevent a tragic situation like occurred in New Orleans from happening in the Campus Corner area



Staff Discussions

- Police and Fire Departments were invited to this meeting to participate in the discussion of bollard options
- Important to be unified in the decision moving forward



Alternatives—What City Needs

- What is needed is a modular system that can be deployed and retrieved for use in multiple locations throughout the City
- City needs to consider more defined policies regarding where events can and cannot be supported including clearly defined expectations for organizers. (***consideration for event friendly zones***)
- Event friendly zones in the long term could incorporate more fixed structures such as traffic rated street furniture/planters, or designed barriers as a few examples.
- Additional Devices such as what OUPD currently uses to close portion of Campus for football game day situations (MVBs)
- Concrete barricades could be included as added layer to closures. (not necessarily traffic rated but more robust)



Modular System Example



- Meridian Rapid Defense modular barrier system
 - Mobile capability
 - Can be expanded beyond roadway
 - ADA accessible
 - Rapid deployment
 - Blends well with current staff operation for event security
 - Can be incorporated into other systems such as concrete barriers and traffic rated streetscape elements
 - Direct purchase or rental option



Modular System Example

- Access control barrier that OU uses
 - Mobile capability
 - Ease of operation
 - Low maintenance
 - Can be incorporated with multiple barrier setups including concrete barricades and Meridian system
 - Solar/generator controlled



More Discussion/Questions?

