

creative home designs

100 N. BROADWAY SUITE 100 EDMOND, OK 73034 405-270-6417

6112 S. MEMORIAL TULSA, OK 74133 918-943-5154

120 E. TONHAWA SUITE 103 NORMAN, OK 73069 405-857-9059

creativehomedesigners.com

BOYD ST DEVOPMENT

10/9/2023

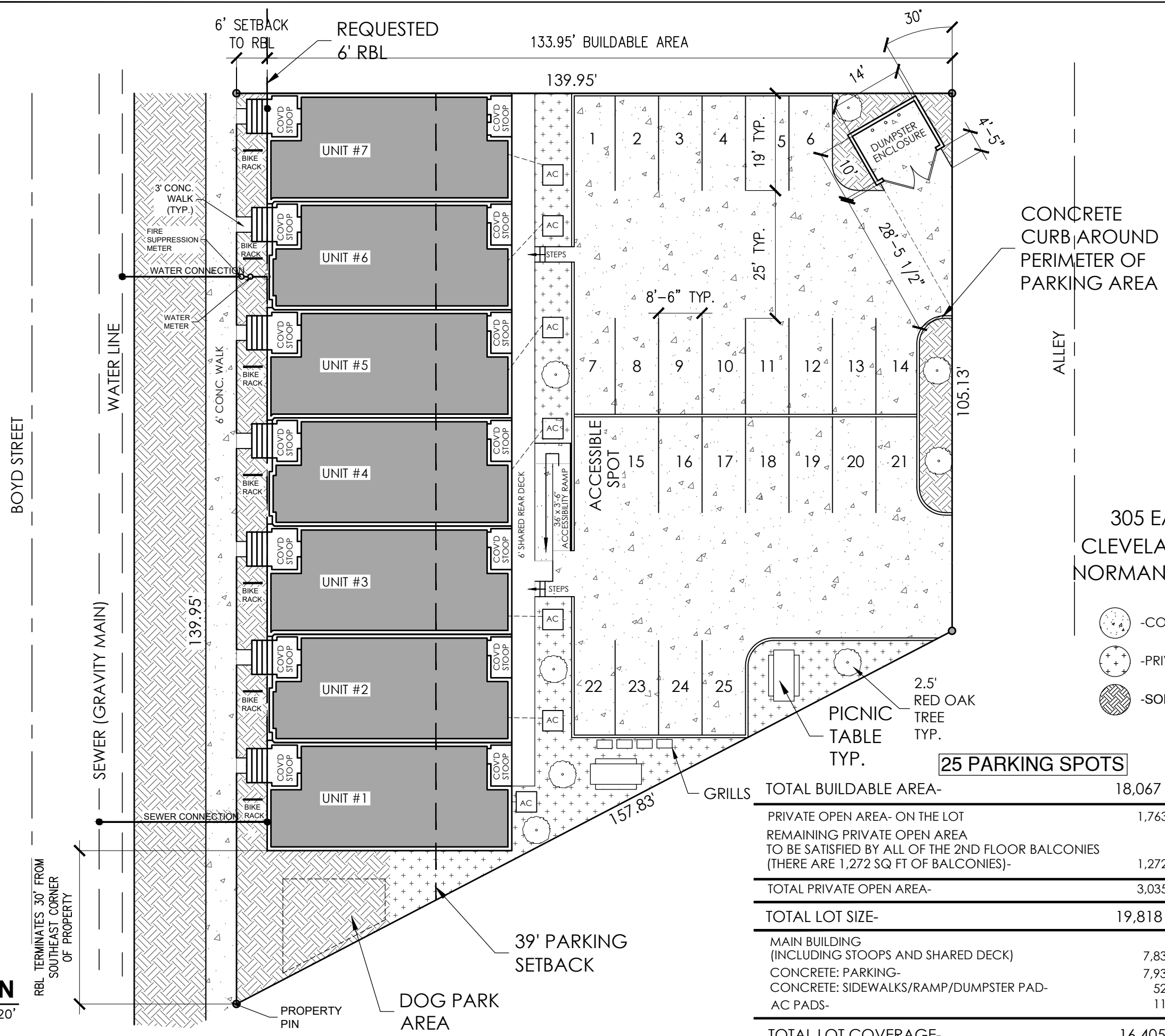
NL

BUILDING ADDRESS

SQUARE FOOTAGE

SITE PLAN

S102



305 EAST BOYD CLEVELAND COUNTY NORMAN, OKLAHOMA

- CONCRETE
- PRIVATE OPEN AREA
- SOD

25 PARKING SPOTS

TOTAL BUILDABLE AREA-	18,067 SQ FT	
PRIVATE OPEN AREA- ON THE LOT	1,763 SQ FT	9.56 %
REMAINING PRIVATE OPEN AREA TO BE SATISFIED BY ALL OF THE 2ND FLOOR BALCONIES (THERE ARE 1,272 SQ FT OF BALCONIES)-	1,272 SQ FT	7.04 %
TOTAL PRIVATE OPEN AREA-	3,035 SQ FT	16.80 %
TOTAL LOT SIZE-	19,818 SQ FT	
MAIN BUILDING (INCLUDING STOOPS AND SHARED DECK)	7,835 SQ FT	39.54 %
CONCRETE: PARKING-	7,938 SQ FT	40.05 %
CONCRETE: SIDEWALKS/RAMP/DUMPSTER PAD-	520 SQ FT	2.71 %
AC PADS-	112 SQ FT	0.56 %
TOTAL LOT COVERAGE-	16,406 SQ FT	82.78 %

1 SITE PLAN SCALE: 1" = 20'



RBL TERMINATES 30' FROM SOUTHEAST CORNER OF PROPERTY