



NSE ENGINEERING CONSULTANTS
 2000 WEST LINSEY STREET
 NORMAN, OK 73072
 TEL: 575-891-4239
 www.nseengineering.com

CREATED BY: M. J. MCKINLEY
 DATE: 04-02-2026
 PROJECT NO. 9036

EXHIBIT-A
 SHEET NO. 9036

MAJID AN-NUR SPUD
 420 EAST LINSEY STREET
 CITY OF NORMAN, CLEVELAND COUNTY, OKLAHOMA

SHEET TITLE: EXHIBIT A - SIMPLE PLANNED UNIT DEVELOPMENT PLAN

Revisions

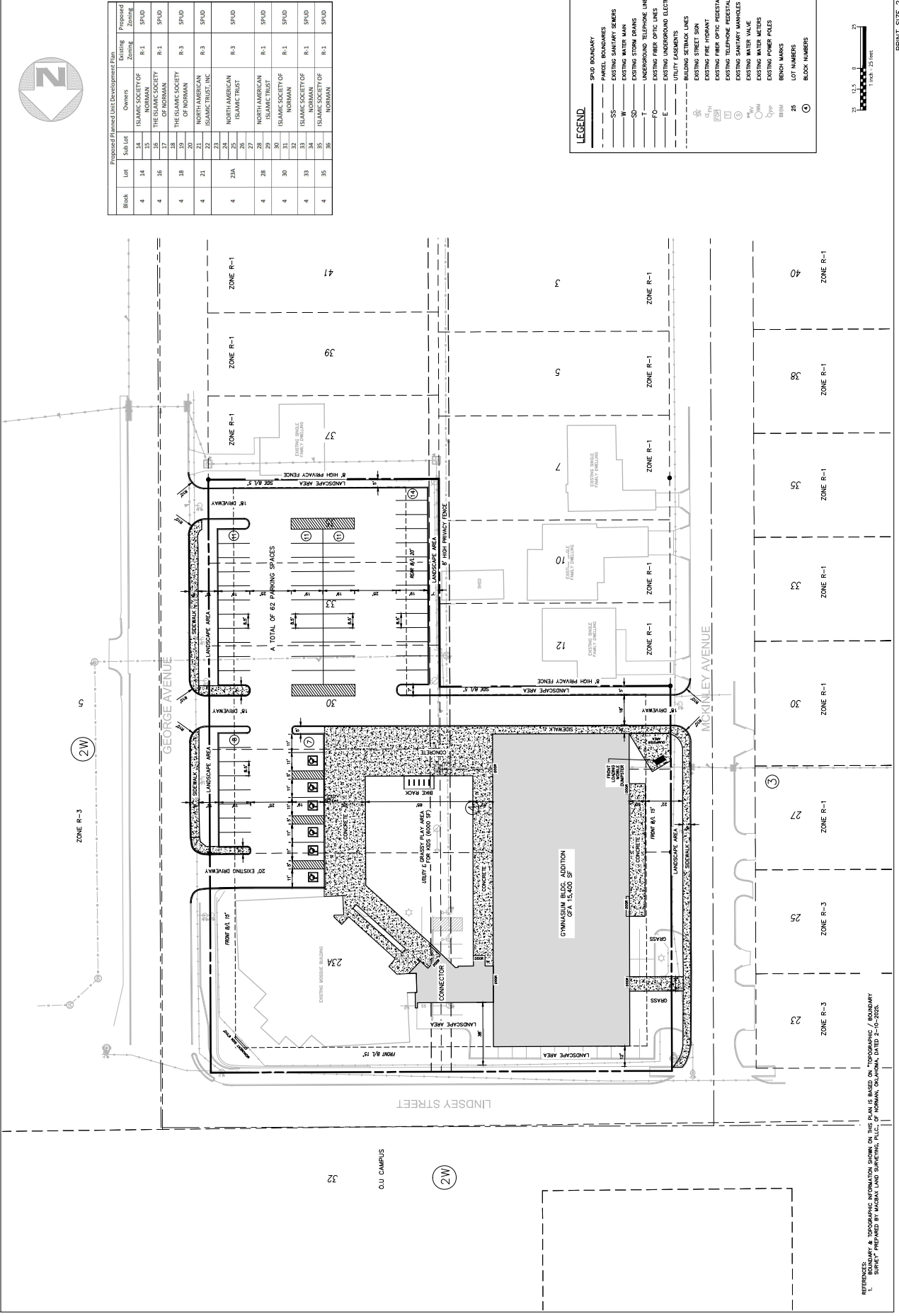
Issue Date: 04-02-2026

Project No. 9036

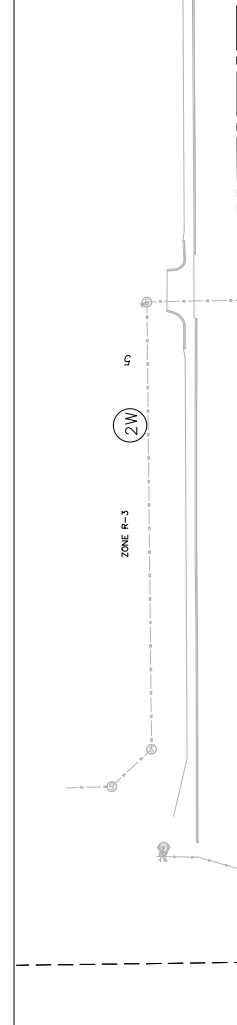
Sheet No. 9036

SEAL

COPYRIGHT 2026, NSE ENGINEERING - ALL RIGHTS RESERVED. THE COPYING OR REUSE OF THIS DOCUMENT, OR PORTIONS THEREOF, FOR OTHER THAN THE ORIGINAL PROJECT OR THE PURPOSE ORIGINALLY INTENDED, WITHOUT THE WRITTEN PERMISSION OF NSE ENGINEERING, IS PROHIBITED.



| Block | Lot | Sub-Lot | Owners | Existing Zoning | Proposed Zoning |
|-------|-----|---------|-------------------------------|-----------------|-----------------|
| 4 | 14 | 12 | ISLAMIC SOCIETY OF NORMAN | R-1 | SPUD |
| 4 | 15 | 13 | ISLAMIC SOCIETY OF NORMAN | R-1 | SPUD |
| 4 | 16 | 14 | THE ISLAMIC SOCIETY OF NORMAN | R-1 | SPUD |
| 4 | 17 | 15 | THE ISLAMIC SOCIETY OF NORMAN | R-1 | SPUD |
| 4 | 18 | 16 | THE ISLAMIC SOCIETY OF NORMAN | R-1 | SPUD |
| 4 | 19 | 17 | THE ISLAMIC SOCIETY OF NORMAN | R-1 | SPUD |
| 4 | 20 | 18 | THE ISLAMIC SOCIETY OF NORMAN | R-1 | SPUD |
| 4 | 21 | 19 | THE ISLAMIC SOCIETY OF NORMAN | R-1 | SPUD |
| 4 | 22 | 20 | THE ISLAMIC SOCIETY OF NORMAN | R-1 | SPUD |
| 4 | 23 | 21 | THE ISLAMIC SOCIETY OF NORMAN | R-1 | SPUD |
| 4 | 24 | 22 | THE ISLAMIC SOCIETY OF NORMAN | R-1 | SPUD |
| 4 | 25 | 23 | THE ISLAMIC SOCIETY OF NORMAN | R-1 | SPUD |
| 4 | 26 | 24 | THE ISLAMIC SOCIETY OF NORMAN | R-1 | SPUD |
| 4 | 27 | 25 | THE ISLAMIC SOCIETY OF NORMAN | R-1 | SPUD |
| 4 | 28 | 26 | THE ISLAMIC SOCIETY OF NORMAN | R-1 | SPUD |
| 4 | 29 | 27 | THE ISLAMIC SOCIETY OF NORMAN | R-1 | SPUD |
| 4 | 30 | 28 | THE ISLAMIC SOCIETY OF NORMAN | R-1 | SPUD |
| 4 | 31 | 29 | THE ISLAMIC SOCIETY OF NORMAN | R-1 | SPUD |
| 4 | 32 | 30 | THE ISLAMIC SOCIETY OF NORMAN | R-1 | SPUD |
| 4 | 33 | 31 | THE ISLAMIC SOCIETY OF NORMAN | R-1 | SPUD |
| 4 | 34 | 32 | THE ISLAMIC SOCIETY OF NORMAN | R-1 | SPUD |
| 4 | 35 | 33 | THE ISLAMIC SOCIETY OF NORMAN | R-1 | SPUD |



REFERENCES:
 1. BOUNDARY & TOPOGRAPHIC INFORMATION SHOWN ON THIS PLAN IS BASED ON TOPOGRAPHIC / BOUNDARY SURVEY PREPARED BY MACRAJ LAND SURVEYING, P.L.L.C. OF NORMAN, OKLAHOMA, DATED 2-10-2025.

PRINT SIZE 24"x36"