

PRELIMINARY SITE DEVELOPMENT PLAN
FOOD AND SHELTER PHASE 2
 A PLANNED UNIT DEVELOPMENT
 A PART OF THE S.E. 1/4 OF SECTION 29, T9N, R2W, I.M.
 NORMAN, CLEVELAND COUNTY, OKLAHOMA

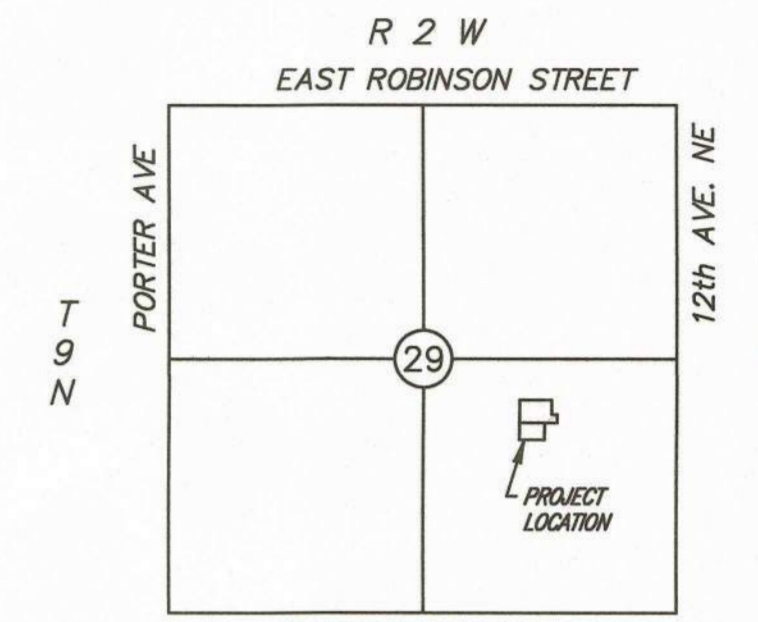
© SMC CONSULTING ENGINEERS, P.C. ALL RIGHTS RESERVED. THESE DOCUMENTS MAY NOT BE USED FOR ANY PURPOSES WITHOUT PRIOR WRITTEN PERMISSION FROM SMC CONSULTING ENGINEERS, P.C.

OWNER / DEVELOPER

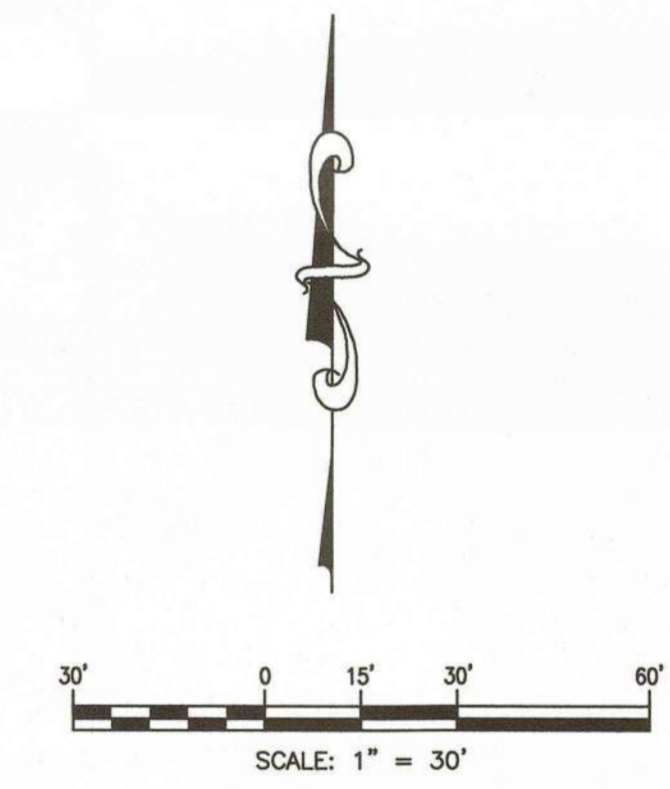
FOOD AND SHELTER, INC.
 APRIL HEIPLE EXECUTIVE DIRECTOR
 P.O. BOX 5537
 NORMAN, OK 73070
 PH: (405) 761-8313

PREPARED BY

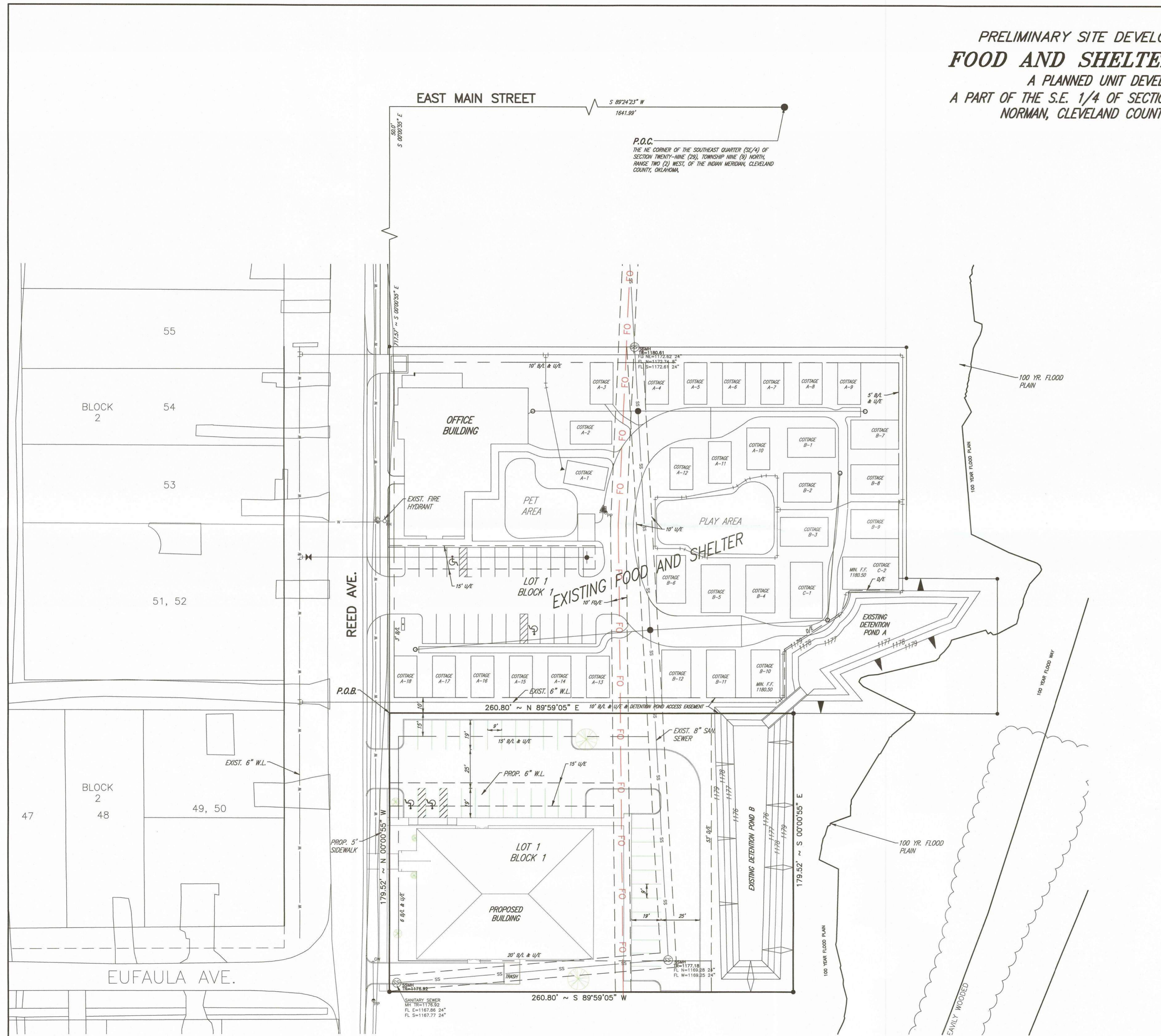
SMC CONSULTING ENGINEERS, P.C.
 815 W. MAIN ST.
 OKLAHOMA CITY, OKLAHOMA 73106
 (405) 232-7715



LOCATION MAP
 SCALE: 1"=2000'



- NOTES:**
1. FIRE HYDRANTS WILL BE LOCATED AND INSTALLED IN ACCORDANCE WITH THE FINAL PLANS AND THE CITY OF NORMAN STANDARDS AND SPECIFICATIONS.
 2. ALL PROPOSED WATERLINES SHALL BE 6" UNLESS OTHERWISE NOTED.



FOOD AND SHELTER PHASE 2
A PLANNED UNIT DEVELOPMENT

REED AVE. & E. MAIN STREET
NORMAN, OKLAHOMA

SMC
 Consulting Engineers, P.C.
 815 W. MAIN ST.
 OKLAHOMA CITY, OKLAHOMA 73106
 PH: 405-232-7715 Fax: 405-232-7858
 Website: www.smcok.com
 OKLAHOMA CERTIFICATE OF AUTHORIZATION NO. CA 464 EXP. 02/29/2023

No.	Revision	Date

PROJECT NO.: 5891.02
 DATE: 08/02/2021
 SCALE: 1" = 30'
 DRAWN BY: C.D.A.
 ENGINEER: CHRISTOPHER D. ANDERSON
 P.E. NUMBER: 18288

PRELIMINARY
SITE DEVELOPMENT PLAN

SHEET NO.
1