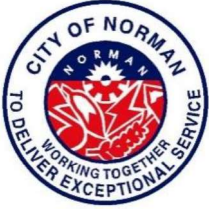


File Attachments for Item:

14. CONSIDERATION OF ACCEPTANCE, APPROVAL, REJECTION, AMENDMENT, AND/OR POSTPONEMENT OF CHANGE ORDER NUMBER TWO AND FINAL ACCEPTANCE OF CONTRACT K-2223-76: BY AND BETWEEN THE CITY OF NORMAN, OKLAHOMA, AND RUDY CONSTRUCTION COMPANY IN THE AMOUNT OF \$13,885.74 FOR THE ROBINSON STREET WIDENING AND SIGNALIZATION PROJECT.



CITY OF NORMAN, OK STAFF REPORT

MEETING DATE: 08/13/2024

REQUESTER: Tim Miles, Capital Projects Manager

PRESENTER: Scott Sturtz, Interim Director of Public Works
Jason Olsen, Parks and Recreation Director

ITEM TITLE: CONSIDERATION OF ACCEPTANCE, APPROVAL, REJECTION, AMENDMENT, AND/OR POSTPONEMENT OF CHANGE ORDER NUMBER TWO AND FINAL ACCEPTANCE OF CONTRACT K-2223-76: BY AND BETWEEN THE CITY OF NORMAN, OKLAHOMA, AND RUDY CONSTRUCTION COMPANY IN THE AMOUNT OF \$13,885.74 FOR THE ROBINSON STREET WIDENING AND SIGNALIZATION PROJECT.

BACKGROUND:

On October 13, 2015, the citizens of Norman voted to fund the Norman Forward Program with a limited term ½ percent sales tax increase for 15 years. This initiative included a number of high-priority projects outlined in the 2014 Library Master Plan Update, the 2009 Norman Parks and Recreation Master Plan and additional projects designed to provide recreational opportunities for Norman residents. One such project was the construction of the Griffin Park Soccer Complex. The Griffin Park Soccer Complex project includes the construction of 22 youth fields, better drainage, improved ADA accessibility between fields, and additional parking.

A traffic study was performed in 2017 that showed a need for improved ingress and egress from the planned complex. One improvement is the addition of a road connecting the southeast parking lot to the 12th Avenue SE – High Meadows Drive intersection. The subject of this report includes improvements to the complex's two south entrances on East Robinson Street.

This project includes widening Robinson Street at the eastern entrance on Robinson Street to allow for a new center turn lane that will better accommodate traffic entering the facility. This project also adds a traffic signal at the western Robinson Street entrance to facilitate both entering and exiting the complex.

On February 28, 2023, City Council approved Contract K-2223-76 and Change Order 1 to Contract K-2223-76 with Rudy Construction in the amount of \$604,886.60 for the Robinson Street Widening and Intersection Improvements for the Griffin Park Soccer Complex.

DISCUSSION:

Construction projects are awarded to the lowest responsible bidder. Contractor bids are determined using estimated plan quantities multiplied by the contractor's unit prices for all bid items of the contract. The total of all of these costs represents the contractor's bid. During construction, each quantity is verified in the field and the contractor is reimbursed based on the actual quantity of materials and/or labor used.

Of the sixty-six (66) bid items, forty-one (41) items matched the plan quantities, nine (9) items had a quantity reduction and sixteen (16) items had a quantity increase. In addition, two (2) new bid items were added to the project including pull box removals and striping removal. These quantity changes resulted in an overall increased project cost of \$13,885.74, or 2.3%. The contract increased from \$604,886.60 to \$618,772.34. Please see the attached Change Order 2 for a complete list of bid item cost increases and decreases.

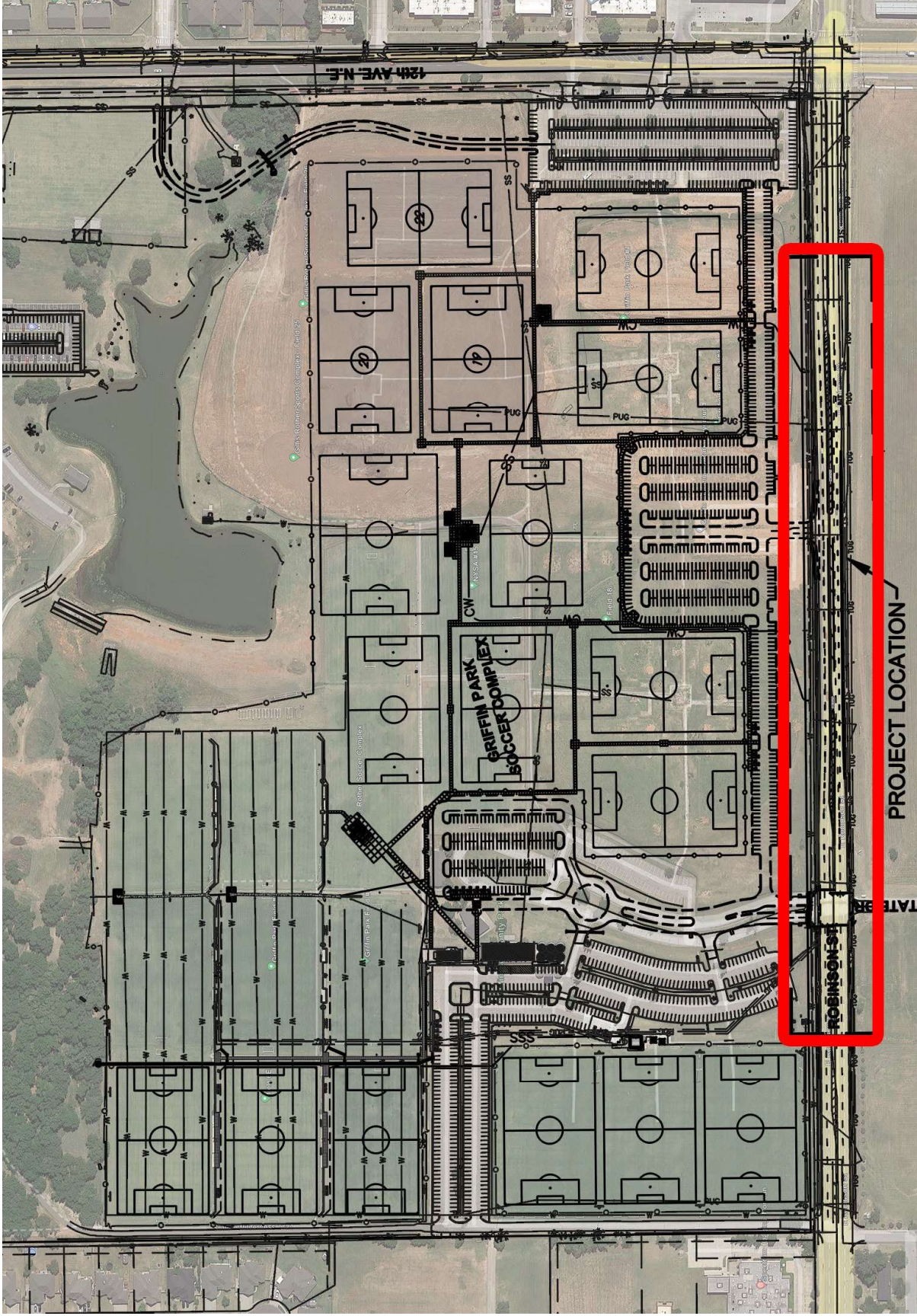
\$5,113.40 of the \$13,885.74 in funds for Change Order 2 are currently available in the Norman Forward Capital Fund, Robinson Street Project, Construction (Account 51594405-46101; Project NFP120).

RECOMMENDATION 1:

City Staff recommends that Change Order 2 to Contract K-2223-76 be approved in the amount of \$13,885.74.

RECOMMENDATION 2:

City Staff further recommends final acceptance of the Robinson Street Widening and Signalization Project on the east side of Griffin Park Soccer Complex, Contract K-2223-76, and final payment to Rudy Construction Company of Oklahoma City, Oklahoma in the amount of \$21,825.60.



Griffin Park Soccer Complex
Robinson Widening and Signalization

CHANGE ORDER SUMMARY
CITY OF NORMAN
CLEVELAND COUNTY, OKLAHOMA

CHANGE ORDER NO. 2

DATE: June 25, 2024

CONTRACT NO.: K-2223-76

SUBMITTED BY: Tim Miles

PROJECT: Robinson Widening and Signalization

CONTRACTOR: Rudy Construction Company
P.O. Box 14575
Oklahoma City, Oklahoma 73113

Original Contract Time: 250 days

Original Contract Amount: \$604,886.60

DESCRIPTION	INCREASE	DECREASE
Change in Pay Quantities	\$13,885.74	\$(0)
Change in Contract Time	0 Days	0 Days

NET CHANGE \$13,885.74

REVISED CONTRACT TIME: 250 days

REVISED CONTRACT AMOUNT: \$618,772.34

See Detailed Quantity Change on Page 2 of 2:

Detailed Quantity Change:

ITEM	DESCRIPTION	UNIT	CONTRACT QUANTITY	CO #2 QUANTITY	QUANTITY CHANGE	COST CHANGE
1	UNCLASSIFIED EXCAVATION	CY	178	178	0	\$0.00
2	UNCLASSIFIED BORROW	CY	60	60	0	\$0.00
3	TEMPORARY SILT FENCE	LF	1200	0	-1200	(\$4,800.00)
4	INLET PROTECTION	EA	2	1	-1	(\$150.00)
5	CONSTRUCTION ENTRANCE	EA	1	0	-1	(\$3,500.00)
6	CONCRETE WASHOUT	EA	1	1	0	\$0.00
7	SOLID SLAB SODDING	SY	140	383.33	243.33	\$2,189.97
8	SEED DISTURBED AREAS	LS	1	1	0	\$0.00
9	P.C. CONCRETE PAVEMENT (PLACEMENT)	SY	170	210.99	40.99	\$3,074.25
10	P.C. CONCRETE FOR PAVEMENT	CY	40	44	4	\$1,300.00
11	1'-8" COMB. CURB & GUTTER (8" BARRIER)	LF	728	756	28	\$420.00
12	INLET CI DES. 2 - REMOVAL	EA	1	1	0	\$0.00
13	INLET CI DES. 2 (2B)	EA	1	1	0	\$0.00
14	24" R.C. PIPE CLASS III	LF	3	6	3	\$2,250.00
15	REMOVAL OF CURB & GUTTER	LF	728	756	28	\$280.00
16	REMOVAL OF CONCRETE PAVEMENT	SY	17	53.3	36.3	\$1,452.00
17	SAWING PAVEMENT	LF	730	760	30	\$120.00
18	TRAFFIC STRIPE (PLASTIC)(4" WIDE)	LF	2590	5503	2913	\$6,991.20
19	TRAFFIC STRIPE (PLASTIC)(6" WIDE)	LF	1100	1669	569	\$2,048.40
20	TRAFFIC STRIPE (PLASTIC)(12" WIDE)	LF	670	0	-670	(\$3,216.00)
21	TRAFFIC STRIPE (PLASTIC)(ARROWS)	EA	6	6	0	\$0.00
22	SWPPP DOCUMENTATION AND MANAGEMENT	L.Sum	1	1	0	\$0.00
23	MOBILIZATION	L.Sum	1	1	0	\$0.00
24	CONSTRUCTION STAKING	L.Sum	1	1.1	0.1	\$600.00
25	CONSTRUCTION TRAFFIC CONTROL	L.Sum	1	1.1	0.1	\$1,850.00
26	4" HDPE PIPE (TRENCHED) (TP-1)	LF	10	10	0	\$0.00
27	4" HDPE PIPE (BORED) (TP-1)	LF	302	302	0	\$0.00
28	3" HDPE PIPE (TRENCHED) (TP-1)	LF	71	71	0	\$0.00
29	3" HDPE PIPE (BORED) (TP-1)	LF	10	10	0	\$0.00
30	2" HDPE PIPE (TRENCHED) (TP-1) (SP-8)	LF	403	443	40	\$1,200.00
31	PULL BOX TYPE I (SP-7, 17)	EA	7	5	-2	(\$5,160.00)
32	PULL BOX TYPE II (SP-7, 15, 17)	EA	1	1	0	\$0.00
33	STRUCTURAL CONCRETE	CY	23	23.9	0.9	\$1,512.00
34	REINFORCING STEEL	LB	3389	3475.8	86.8	\$208.32
35	20' MH POLE 55' TS (G. STL) (SP-1, 2, 14, 27) (C-6)	EA	1	1	0	\$0.00
36	20' MH POLE 50' TS (G. STL) (SP-1, 2, 14, 27) (C-6)	EA	1	1	0	\$0.00
37	32' MH POLE 30' TS & 10' LMA (G. STL) (SP-1, 2, 14, 27, 28) (C-6)	EA	2	2	0	\$0.00
38	ROADWAY LUMINAIRE (SP-3)	EA	2	2	0	\$0.00

39	(1 CONDUCTOR) (AWG NO. 6) ELECTRICAL CONDUCTOR (TP-1) (SP-11)	LF	680	680	0	\$0.00
40	(1 CONDUCTOR) (AWG NO. 10) ELECTRICAL CONDUCTOR (TP-1)	LF	725	725	0	\$0.00
41	(SP) FIBER OPTIC CABLE, 12, SMF (TP-1) (ITS-2, 6, 7, 12) (SP-9, 29)	LF	312	312	0	\$0.00
42	(SP) FIBER OPTIC PATCH PANEL, 12 PORT (SP-29)	EA	1	1	0	\$0.00
43	(SP) FIBER OPTIC CABLE SPLICE (ITS-12) (SP-29)	EA	4	4	0	\$0.00
44	(SP) FIBER OPTIC CABLE TERMINATION (ITS-12) (SP-29)	EA	12	12	0	\$0.00
45	(SP) SHIELD ISOLATION PEDESTAL (ITS-15) (SP-29)	EA	1	1	0	\$0.00
46	(PL) FIBER OPTIC AND COMMUNICATIONS EQUIPMENT (SP-29)	L.Sum	1	1	0	\$0.00
47	(SP) CABINET (SP-16)	EA	1	1	0	\$0.00
48	TRAFFIC SIGNAL CONTROLLER ASSEMBLY (SP-5, 10, 20, 21, 22)	EA	1	1	0	\$0.00
49	(PL) DETECTION SYSTEM (VIDEO) (SP-18)	L.Sum	1	1	0	\$0.00
50	PEDESTRIAN PUSH BUTTON & SIGN (TS-14)	EA	2	2	0	\$0.00
51	PEDESTRIAN SIGNAL HEAD (TS-22)	EA	2	2	0	\$0.00
52	THREE (3) SECTION ONE WAY TRAFFIC SIGNAL HEAD (S-6) (SP-6, 13)	EA	8	8	0	\$0.00
53	FOUR (4) SECTION ONE WAY TRAFFIC SIGNAL HEAD (S-13) (SP-6, 13)	EA	2	2	0	\$0.00
54	BACKPLATE (SP-26)	EA	10	10	0	\$0.00
55	(5) CONDUCTOR TRAFFIC SIGNAL ELECTRICAL CABLE	LF	1856	2006	150	\$720.00
56	(7) CONDUCTOR TRAFFIC SIGNAL ELECTRICAL CABLE	LF	438	438	0	\$0.00
57	(15) CONDUCTOR TRAFFIC SIGNAL ELECTRICAL CABLE	LF	802	802	0	\$0.00
58	TWO CONDUCTOR SHIELDED LOOP DETECTOR LEAD-IN CABLE (TP-1)	LF	12	0	-12	(\$57.60)
59	E.P.S. OPTICAL EMITTER (SP-20)	EA	1	0	-1	(\$3,120.00)
60	E.P.S. OPTICAL DETECTOR (SP-20)	EA	1	1	0	\$0.00
61	E.P.S. OPTICAL DETECTOR CABLE (TP-1) (SP-20)	LF	44	44	0	\$0.00
62	E.P.S. 4 CHANNEL PHASE SELECTOR (SP-20)	EA	1	1	0	\$0.00
63	MAST ARM MOUNTED SIGNS (ALUM.) (1'S-6) (C-6)	SF	56	56	0	\$0.00
64	TRAFFIC STRIPE (MULTI-POLYMER) (24" WIDE) (TS-28)	LF	235	113	-122	(\$1,756.80)

Item 14.

65	TRAFFIC STRIPE (MULTI-POLYMER) (ARROWS)	EA	2	0	-2	(\$180.00)
66	5 year maintenance bond	LS	1	1	0	\$0.00
67	Pull Box Removals	EA	0	5	5	\$1,300.00
68	Striping Removal	LS	0	1	1	\$8,310.00
	TOTAL COST CHANGE					\$13,885.74

CONTRACTOR: 

DATE: 6/27/24

ENGINEER: _____

DATE: _____

CITY ATTORNEY: _____

DATE: _____

ACCEPTED BY: _____
(Mayor)

DATE: _____