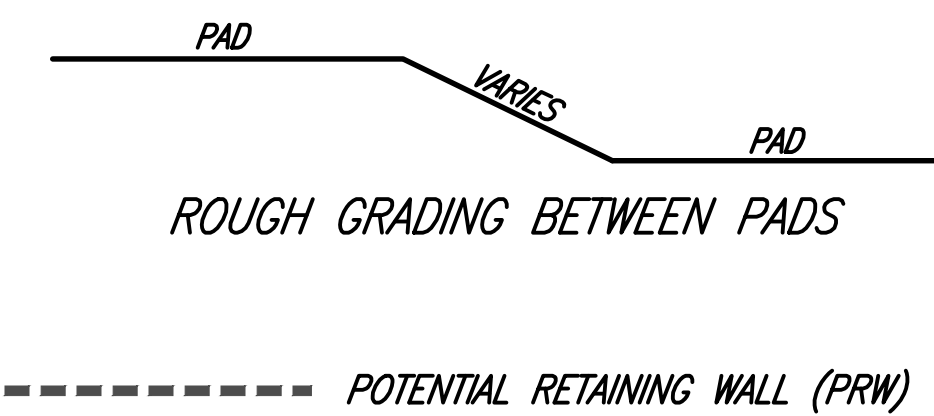


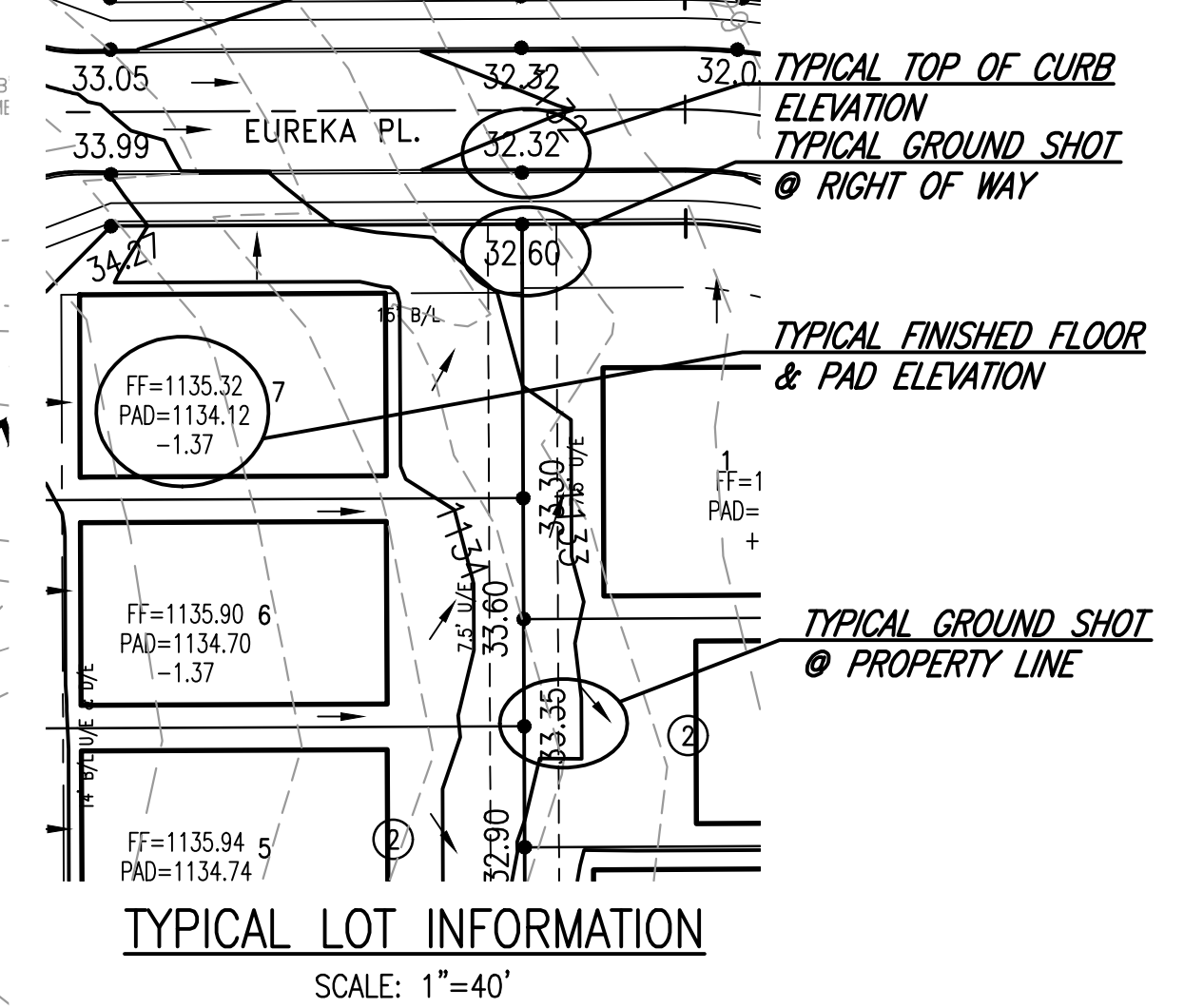
**LIMITS OF DESIGN GRADING NOTES:**

- 1.) The contours, spot elevations, and flow arrows, as shown on this drawing, are for the rough grading operations. Finished lot grading operations shall be performed during the development of each individual lot to provide proper drainage away from structures. See notes on this sheet for Finished Lot Grading Criteria.
- 2.) Pads are shown for reference and do not reflect the actual footprint of the future structure to be placed on each individual lot.
- 3.) Contractor to make sure no ponding occurs when grading back to existing grade.



**RETAINING WALL NOTES:**

- 1.) POTENTIAL SIDE LOT RETAINING WALLS SHOWN FOR REFERENCE ONLY. SEE DETAIL THIS SHEET FOR TYPICAL GRADING BETWEEN PADS.



THE LIMITS OF DESIGN GRADING AS SHOWN ALONG THE PERIMETER OF THIS GRADING PLAN HAVE BEEN CALCULATED FROM SURVEY INFORMATION AND MAY VARY BASED ON ACTUAL FIELD CONDITIONS.

IT IS THE RESPONSIBILITY OF THE CONTRACTOR TO MEET AND MATCH EXISTING FIELD CONDITIONS ALONG THE PERIMETER OF THIS GRADING PLAN IN A MANNER SATISFACTORY TO THE DEVELOPERS REQUIREMENTS.

EXISTING CONDITIONS AS SHOWN ON THIS GRADING PLAN MAY HAVE CHANGED AFTER THE SURVEY USED FOR THIS GRADING PLAN WAS COMPLETED.

**FLINT HILLS ADDITION SECTION 2**

**TECUMSEH RD. & 12TH AVE. N.W. NORMAN, OKLAHOMA**

**SMC Consulting Engineers, P.C.**  
 405-232-7715  
 www.smcok.com

PROJECT NO.: 6342.02  
 DATE: 9/10/21  
 SCALE: 1" = 40'

**GRADING PLAN**

SHEET NO. 24

VERSION E (07-22-24)