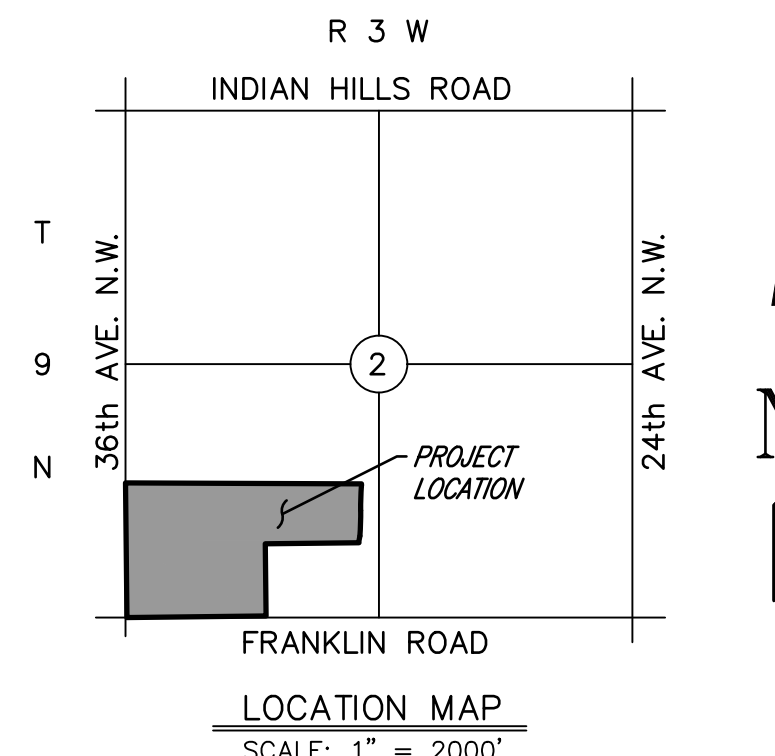
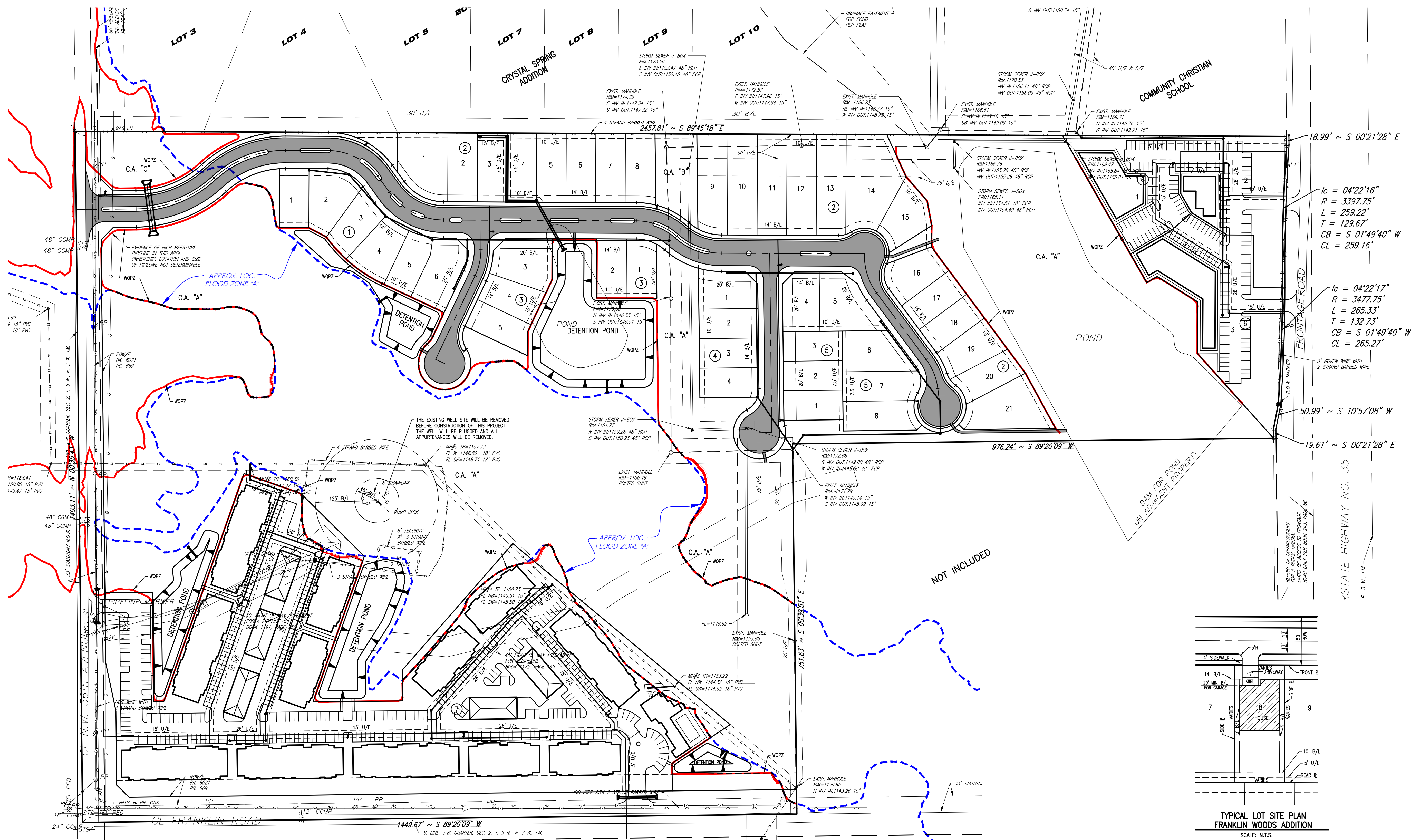


**PRELIMINARY SITE PLAN**  
**FRANKLIN WOODS ADDITION**

A PLANNED UNIT DEVELOPMENT  
 A PART OF THE S.W. 1/4, SECTION 2, T9N, R3W, I.M.  
 NORMAN, CLEVELAND COUNTY, OKLAHOMA



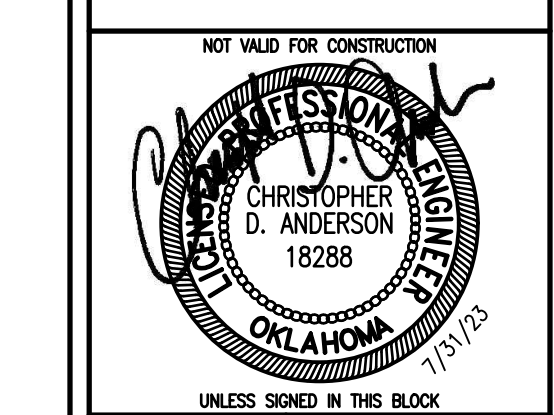
SCALE: 1" = 100'



© SMC CONSULTING ENGINEERS, P.C. ALL RIGHTS RESERVED THESE DOCUMENTS MAY NOT BE USED FOR ANY PURPOSES WITHOUT PRIOR WRITTEN PERMISSION FROM SMC CONSULTING ENGINEERS, P.C.

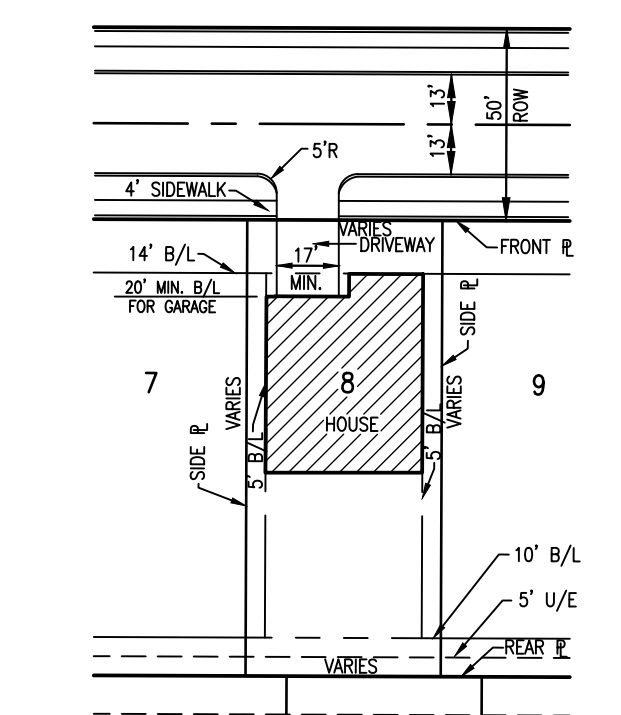
**OWNER:**  
 RAVEN INVESTMENTS, L.L.C.  
 P.O. BOX 7187  
 MOORE, OKLAHOMA 73153

**ENGINEER:**  
 SMC Consulting Engineers, P.C.  
 815 W. Main Street  
 Oklahoma City, Oklahoma 73160



**FRANKLIN WOODS ADDITION**  
 36th AVE. N.W. & FRANKLIN RD.  
 NORMAN, OKLAHOMA

<b>SMC</b> SMC Consulting Engineers, P.C.		Date	05/01/23
By		05/01/23	
PROJECT NO.: 6532.00		DATE:	05/01/23
SCALE: 1" = 100'		DRAWN BY:	DC
ENGINEER: Christopher D. Anderson		P.E. NUMBER:	18288
<b>PRELIMINARY SITE PLAN</b>		SHEET NO.	1



PLANS: 6532.00 - RICHARD MOORE - INHOUD PROPERTY PRELIMINARY PLANS PRELIMINARY SITE PLAN  
 Plotted by: Corey Griffin 05/01/2023 3:40 AM