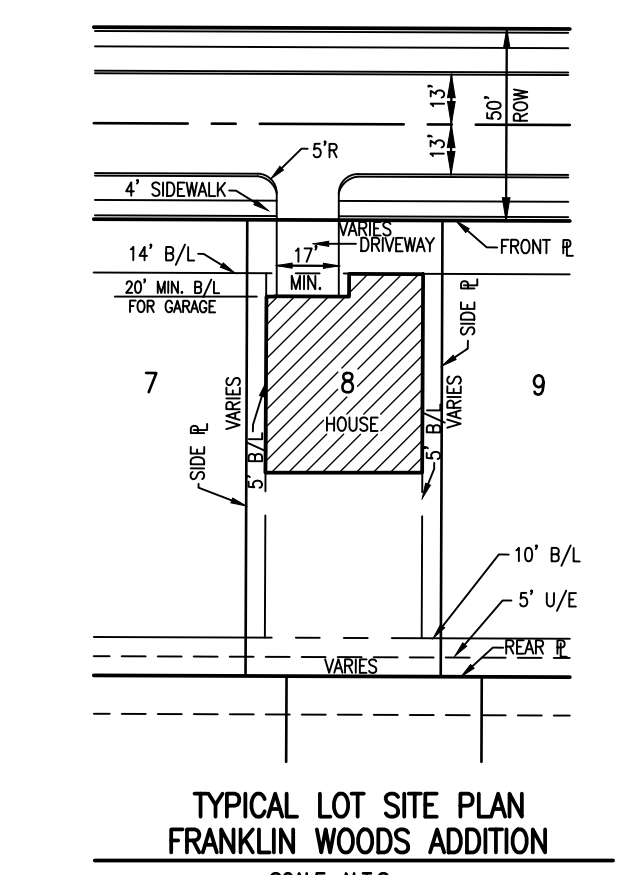
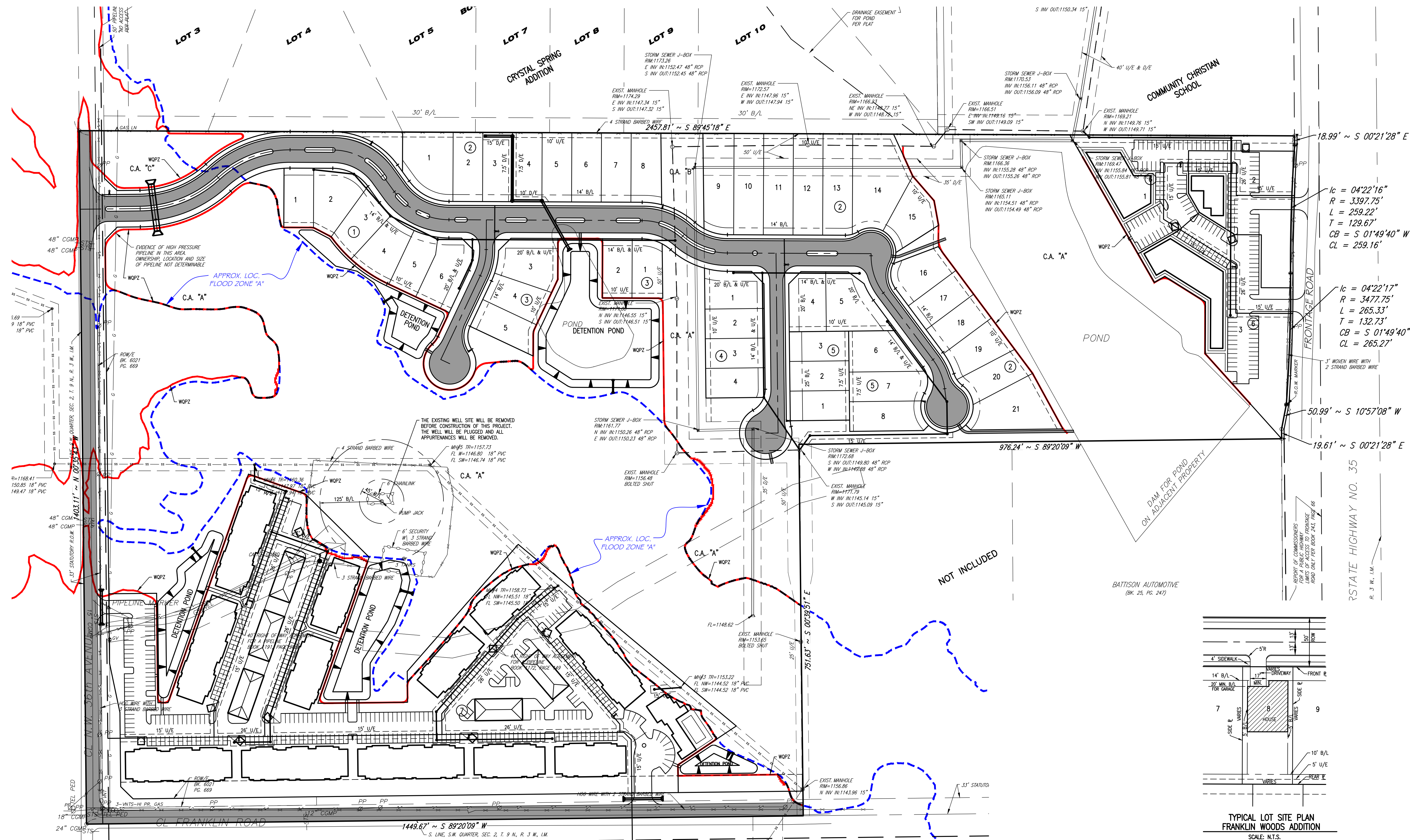
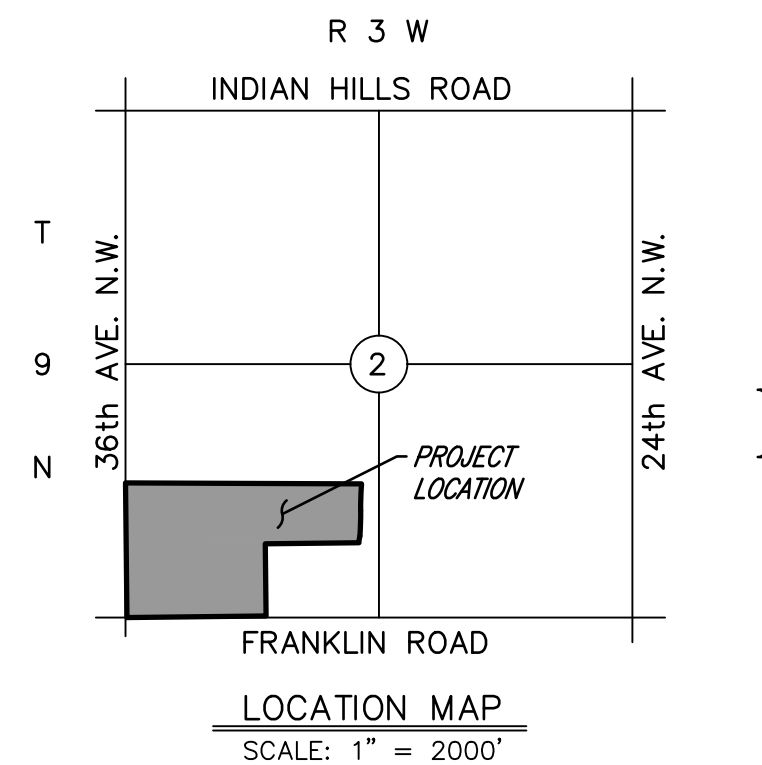


PRELIMINARY SITE DEVELOPMENT PLAN FRANKLIN WOODS ADDITION

A PLANNED UNIT DEVELOPMENT
A PART OF THE S.W. 1/4, SECTION 2, T9N, R3W, I.M.
NORMAN, CLEVELAND COUNTY, OKLAHOMA

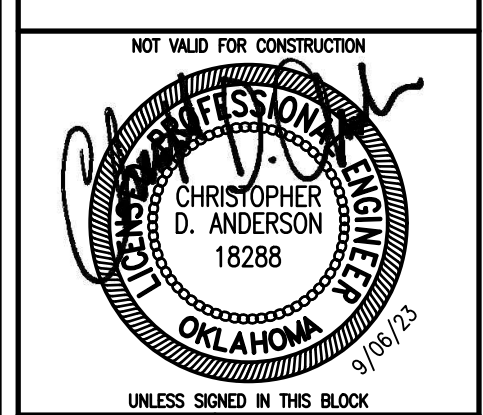
SCALE: 1" = 100'



© SMC CONSULTING ENGINEERS, P.C. ALL RIGHTS RESERVED THESE DOCUMENTS MAY NOT BE USED FOR ANY PURPOSES WITHOUT PRIOR WRITTEN PERMISSION FROM SMC CONSULTING ENGINEERS, P.C.

OWNER:
RAVEN INVESTMENTS, L.L.C.
P.O. BOX 7187
MOORE, OKLAHOMA 73153

ENGINEER:
SMC Consulting Engineers, P.C.
815 W. Main Street
Oklahoma City, Oklahoma 73160



FRANKLIN WOODS ADDITION
36th AVE. N.W. & FRANKLIN RD.
NORMAN, OKLAHOMA

| | | |
|--|----------|----------------|
| SMC Consulting Engineers, P.C. 815 W. Main Street Oklahoma City, Oklahoma 73160 Phone: 405-232-7715 Fax: 405-232-7659 Website: www.smcok.com | Date | 05/01/23 |
| | By | 05/17/23 |
| OKLAHOMA CERTIFICATE OF AUTHORIZATION NO. CA 464 EXP. 09/20/2025 | Revision | |
| | 1 | Revised Layout |

PROJECT NO.: 6532.00
DATE: 5/01/23
SCALE: 1" = 100'
DRAWN BY: DC
ENGINEER: Christopher D. Anderson
P.E. NUMBER: 18288

PRELIMINARY SITE DEVELOPMENT PLAN
SHEET NO.
1

PLANS 05/01/23 - 00 - RICHARD MOORE - INVOIC PROPERTY PRELIMINARY PLANS PRELIMINARY SITE PLAN
Printed by: Corey Gartin & KYLE 3:41 PM