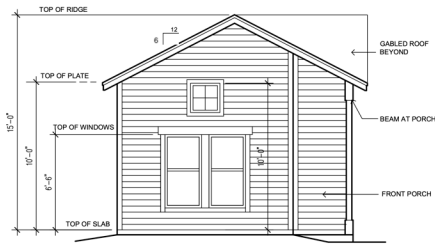
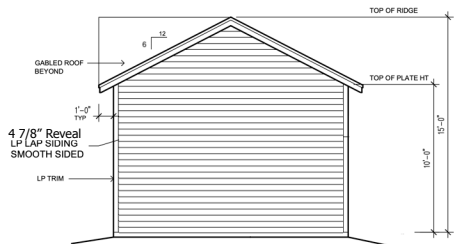


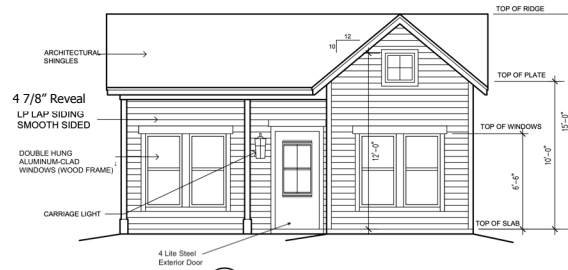
7 REAR ELEVATION FACING NORTH
Scale: 1/4" = 1'-0"
ALONG SIDE FENCE



6 SIDE ELEVATION FACING WEST
Scale: 1/4" = 1'-0"

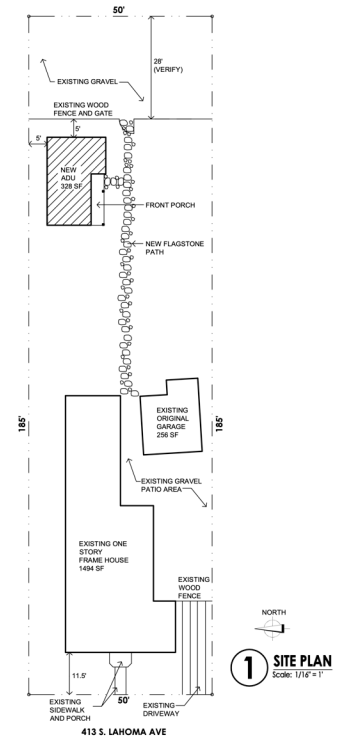


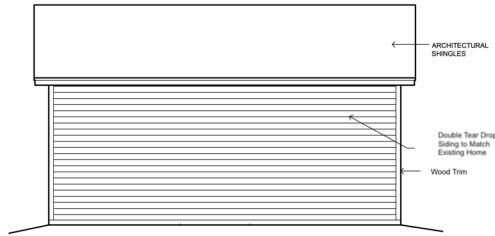
5 SIDE ELEVATION FACING EAST
Scale: 1/4" = 1'-0"



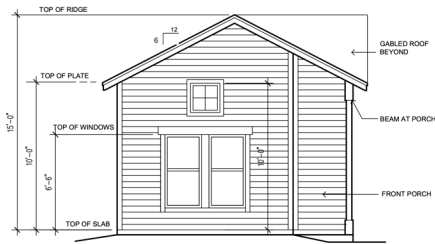
4 FRONT ELEVATION FACING SOUTH
Scale: 1/4" = 1'-0"
BACK YARD VIEW

ADU Option #1 - Preferred Option for Siding and Door

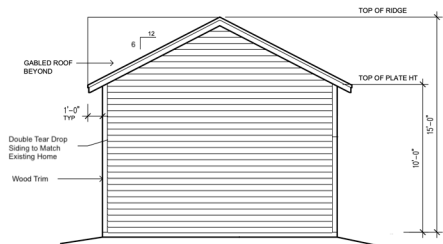




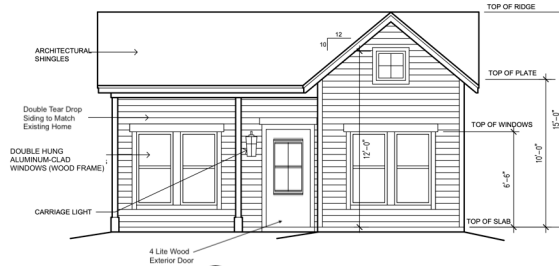
7 REAR ELEVATION FACING NORTH
Scale: 1/4" = 1'-0"
ALONG SIDE FENCE



6 SIDE ELEVATION FACING WEST
Scale: 1/4" = 1'-0"



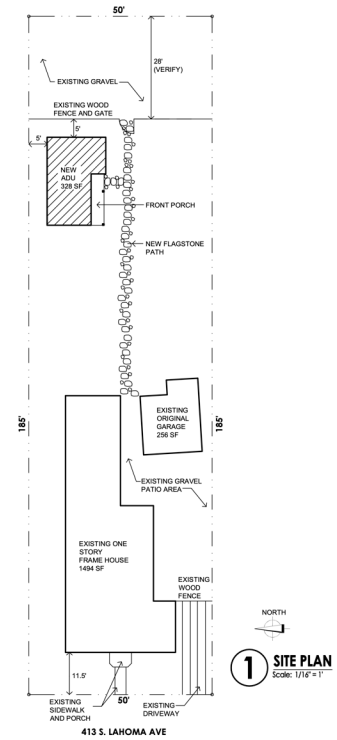
5 SIDE ELEVATION FACING EAST
Scale: 1/4" = 1'-0"



4 FRONT ELEVATION FACING SOUTH
Scale: 1/4" = 1'-0"
BACK YARD VIEW

ADU Option #2 - Alternative Option for Siding and Door

The siding in these elevations do not accurately display the 2.5" reveal



1 SITE PLAN
Scale: 1/16" = 1'-0"



Siding not to scale

true north design
Stacy Moss
stacy@truenorthdesign.com
(713) 562-2241

413 S. LAHOMA AVENUE
Norman, OK
PROPOSED ACCESSORY DWELLING UNIT

NOTE: THESE DRAWINGS ARE PRELIMINARY AND NOT FOR CONSTRUCTION. THESE DRAWINGS SHALL NOT BE COPIED OR DUPLICATED WITHOUT WRITTEN CONSENT FROM TRUE NORTH DESIGN.

MAY 6, 2026

DRAWN BY SM
DRAWING FILE

A1.0
PRELIMINARY DESIGN

413 S LAHOMA



Front of home, facing west



Front door details. Half moon windows architecturally echo the eyebrow roofline above the door.



SW corner of home



South side of home



South side of home, including back door



Rear of home



NE corner of home



North side



NW corner of home



Siding details of existing home



Looking into backyard. Photo taken from in between the home and garage



Looking towards the SE corner of yard



Footprint of proposed ADU



View from the alley behind the home



Siding details of adjacent structure

NW ridge height on front of the home





Ridge at rear
of the home

Pella® Lifestyle Series

Aluminum-Clad Wood



#1 performing wood window and patio door for the combination of energy, sound and value.¹

Triple-pane casement



Dual-pane double-hung window with Hidden Screen



- **Easy-to-learn Pella Steady Set® interior installation system**
Pella Steady Set Interior Installation System is a revolutionary, award-winning and safer way to install new construction windows.¹ The simple system is the fastest, most labor efficient wood window installation system with uncompromising quality.² Available on select windows.
- **Performance redefined**
You don't have to compromise on any aspect of performance. Available performance solutions offer an unbeatable combination of energy efficiency, sound control and value.³
- **ENERGY STAR® certified⁴**
Pella products offer energy-efficient options that will meet or exceed ENERGY STAR guidelines in all 50 states. Pella Lifestyle Series products with triple-pane glass have been awarded ENERGY STAR Most Efficient Mark in 2023.
- **Enhanced sound control**
Our patented, triple-pane design allows for mixed glass thickness for enhanced sound dampening resulting in an average 52% noise reduction versus single-pane windows.⁵
- **Intentional design for improved durability**
Intentional jamb on sill design helps seal the end grain of the wood and elevates it off the rough opening, reducing the potential for moisture.
- **Durable 3-way corner joints**
Three-way corner joints are made up of mortise-and-tenon, metal fasteners and commercial adhesive for added strength and durability.
- **Quality exterior finishes**
EnduraClad® finish is a tough, protective aluminum finish for windows. The overlapping, watershed cladding resists chalking and fading. Our extruded aluminum-cladding delivers exceptional durability for sliding patio door exteriors.
- **Exclusive wood protection**
Pella's exclusive EnduraGuard® wood protection is applied after the pieces have been cut and milled, but prior to final assembly. It provides advanced protection against the effects of moisture, decay, stains from mold and mildew — as well as termite damage.
- **Time-tested innovations**
Create unique room-by-room solutions and achieve project goals with performance options and purposeful innovations like the Hidden Screen and integrated blinds and shades.
- **Best limited lifetime warranty⁶**
Pella Lifestyle Series products are covered by the best limited lifetime warranty in the industry for wood windows and patio doors.⁶
- **Testing beyond requirements**
At Pella, our products are tested beyond requirements to help ensure they have long-lasting performance and reduce call-backs for you.
- **Convenient & durable screens**
The revolutionary Hidden Screen appears when you open a double-hung window and folds away when it is closed. It provides a clear view when the window is closed and improves curb appeal year-round. The heavy-duty TuffScreen® by Phifer keeps bugs out and allows more fresh air in as one of the most durable screen options on the market. Available on sliding patio doors.

Available in these window and patio door styles:⁷



Special shape windows also available.

^{1,2,3,4,5,6,7} See back cover for disclosures.

Product Specifications

Window & Patio Door Styles	Min. Width	Min. Height	Max. Width	Max. Height	Performance Class & Grade	Performance Values			Frame/Install
						U-Factor	SHGC	STC	
Awning Dual-pane vent	21"	17"	59"	59"	LC30 – LC50	0.25-0.34	0.19-0.51	25-28	Pella Steady Set™, Fold-out Fin, Block Frame, EnduraClad Exterior Trim / Brickmould
Awning Triple-pane vent	21"	17"	59"	59"	R20 - CW50	0.20-0.28	0.15-0.41	31-37	
Casement Dual-pane vent	17"	17"	35"	73"	LC30-LC50	0.25-0.34	0.19-0.58	25-31	
Casement Triple-pane vent	17"	17"	35"	73"	R20-CW50	0.20-0.25	0.17-0.46	31-37	
Fixed Casement Dual-pane	17"	17"	73"	73"	LC30-LC50	0.23-0.35	0.20-0.57	29-32	
Fixed Casement Triple-pane	17"	17"	73"	73"	R20-CW50	0.19-0.27	0.15-0.49	33-37	
Double-Hung Dual-pane vent	21"	35"	48"	84"	LC30-LC50	0.25-0.34	0.20-0.48	27-31	Fold-out Fin, Block Frame, EnduraClad Exterior Trim / Brickmould
Hinged Patio Door Dual-pane single door	30"	80"	38"	96"	LC50	0.26-0.32	0.18-0.48	31	
Hinged Patio Door Triple-pane single door	30"	80"	38"	96"	LC55	0.23-0.28	0.12-0.34	34-36	
Hinged Patio Door Dual-pane double door	60"	80"	75"	96"	LC50	0.25-0.29	0.18-0.48	30-32	
Hinged Patio Door Triple-pane double door	60"	80"	75"	96"	LC55	0.22-0.26	0.14-0.38	34-36	
Sliding Patio Door Dual-pane double-door vent (OX or XO)	60"	80"	120"	120"	R20-LC50	0.26-0.31	0.20-0.51	28-31	
Sliding Patio Door Triple-pane double-door vent (OX or XO)	60"	80"	96"	96"	LC35-LC50	0.23-0.26	0.19-0.47	32-34	
Sliding Patio Door Dual-pane triple-door vent (OXO)	90"	80"	180"	120"	R20-LC35	0.26-0.31	0.20-0.51	-	
Sliding Patio Door Triple-pane triple-door vent (OXO)	90"	80"	144"	96"	LC35	0.23-0.26	0.19-0.47	-	
Sliding Patio Door Dual-pane quadruple-door vent (OXXO)	117"	80"	237"	120"	R20-LC35	0.26-0.31	0.20-0.51	-	
Sliding Patio Door Triple-pane quadruple-door vent (OXXO)	117"	80"	189"	96"	LC35	0.23-0.26	0.19-0.47	-	

Window sizes available in 1/4" increments

Special sizes available in dual- and triple-pane sliding patio doors. For more information regarding performance, visit pella.com/performance. For more information regarding frame and installation types, visit install.pella.com.

Window Hardware

Essential Collection

Select from popular designs and finishes to suit every style.

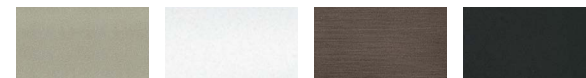


Fold-Away Crank



Cam-Action Lock

Finishes:



Champagne

White

Brown

Matte Black



Satin Nickel



Satin Brass

Patio Door Hardware

Essential Collection

Elevate your style and transform a home with elegant selections.

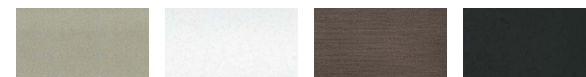


Hinged Patio Door Handle



Sliding Patio Door Handle

Finishes:

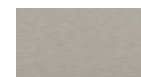


Champagne

White

Brown

Matte Black



Satin Nickel



Satin Brass

Colors

Prefinished Pine Interior Colors

We can prefinish pine in your choice of several colors. Unfinished or primed and ready-to-paint are also available.



Aluminum-Clad Exterior Colors

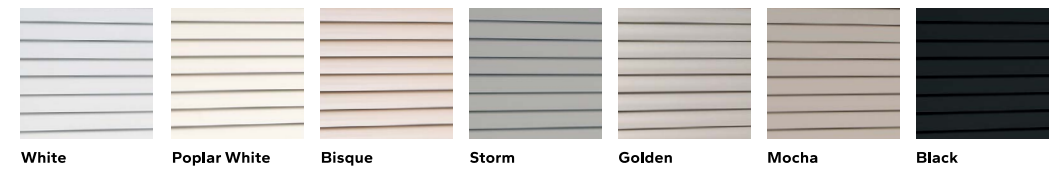
Our low-maintenance EnduraClad® exterior finish resists fading and helps protect windows and patio doors for years. Seacoast EnduraClad® delivers the same beautiful finish with extended warranty protection for projects in coastal environments with high salt exposure.



Integrated Blinds & Shades

Integrated Blinds®

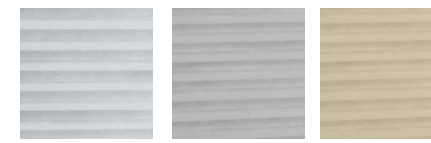
Raise blinds up for an unobstructed view or tilt to let in just the right amount of light. Integrated blinds are manually operated.



Integrated Shades®

Our best integrated fabric shades feature a white exterior fabric for a uniform look from the street. Integrated shades are manually operated.

Light-Filtering:



White

Silver

Maize

Room-Darkening:



Cotton

Bamboo

Ash

Haven't landed on the final blind or shade color selection? No problem. With our patented triple-pane design, you and your customer can make those decisions later in the schedule. Our triple-pane products come with all of the hardware to add a blind or shade straight from the factory or at a later time in the building or remodeling process.

Screens⁹

Hidden Screen

The Hidden Screen appears when you open a double-hung window and folds away when the window is closed. It allows 44% more natural light into your home when a window is closed than a standard screen.¹⁰ Hidden Screen cartridge available in Black, White, Brown, Fossil and Iron Ore colors to match or complement the exterior cladding color choice.

Rolscreen®

Rolscreen soft-closing retractable screens roll out of sight when not in use. Available on casement windows.

TuffScreen® by Phifer®

The heavy-duty vinyl-coated screen is tear, puncture and damage resistant, standing up to pets, children and harsh weather. The TuffScreen® by Phifer is 2.5x stronger than a standard screen.¹² Available on sliding patio doors.

*All trademarks are property of their respective owners

InView™

InView flat screens let in 14% more light and are 8% more open for improved airflow when compared to the conventional fiberglass screen.¹¹

Performance Packages

To make things easier, we've created performance packages.

Performance solutions offer an unbeatable combination of energy efficiency, sound control and value.¹ Create room-by-room solutions with the upgraded triple-pane glass design.

All values below are averages compared with single-pane windows.



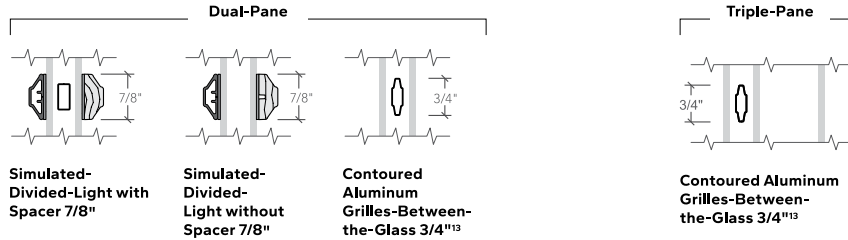
Pella® Lifestyle Series offers products awarded ENERGY STAR® Most Efficient for 2023.⁴

Base	Performance	Sound Control	Energy Efficiency	Ultimate Performance
	71% More Energy Efficient ¹⁰ + 34% Noise Reduction ⁵	52% Noise Reduction ⁵	83% More Energy Efficient ¹⁰	79% More Energy Efficient ¹⁰ + 52% Noise Reduction ⁵
<p>Advanced Low-E, AdvancedComfort, SunDefense Low-E, NaturalSun Low-E, SunDefense+ Low-E or NaturalSun+ Low-E</p> <p>Two panes of insulating, energy-efficient glass and our most popular features and options.</p>	<p>Advanced Low-E, SunDefense Low-E, NaturalSun Low-E, SunDefense+ Low-E or NaturalSun+ Low-E</p> <p>A triple-pane glass design for a combination of both improved energy efficiency and sound performance.</p>	<p>Advanced Low-E, SunDefense Low-E, NaturalSun Low-E, SunDefense+ Low-E or NaturalSun+ Low-E</p> <p>Triple-pane glass design featuring mixed glass thicknesses for enhanced sound dampening.</p>	<p>AdvancedComfort</p> <p>A triple-pane glass design with upgraded AdvancedComfort Low-E glass for enhanced energy efficiency.</p>	<p>AdvancedComfort</p> <p>A triple-pane glass design featuring mixed glass thicknesses with upgraded AdvancedComfort Low-E glass for enhanced energy efficiency.</p>

Patented triple-pane glass design gives flexibility to add integrated blinds or shades without impacting performance.

Grilles

Choose the look of true divided light or make cleaning easier by selecting grilles-between-the-glass.



The Best Limited Lifetime Warranty in the Industry

We know your reputation matters and you stake your reputation on quality, dependable products. That's why we have the best limited lifetime warranty in the industry for wood windows and patio doors.⁶

¹ Compared to leading national wood window brands recommended installation methods for new construction windows.

² Comparing average install time and plumb/level/square measurements of leading national wood window brands when installed following the manufacturer's standard installation methods for new construction windows.

³ Performance solutions require upgrades to triple-pane, AdvancedComfort Low-E and mixed glass thickness. Based on comparing product quotes and published STC/OITC and U-Factor ratings of leading national wood window and patio door brands.

⁴ Some Pella products may not meet ENERGY STAR certification in Canada. For more information, contact your local Pella sales representative or go to nrcan.gc.ca/energy/products/categories/fenestration/13739.

⁵ Reduction in sound based on OITC ratings of Pella Lifestyle Series windows with respective performance package compared to a single-pane wood or vinyl window with an OITC of 19. Calculated by using the sound transmission loss values in the 80 to 4000 Hz range as measured in accordance with ASTM E-90(09). Actual results may vary.

⁶ Based on comparing written limited warranties of leading national wood window and wood patio door brands. See written limited warranty for details, including exceptions and limitations, at pella.com/warranty.

⁷ Double-hung windows available in dual-pane only.

⁸ Available with triple-pane products only.

⁹ Warning: Screen will not stop child or pet from falling out of window or door. Keep child or pet away from open window or door.

¹⁰ Window energy efficiency calculated in a computer simulation using RESFEN 6.0 default parameters for a 2000 sq. foot new construction single-story home when Pella Lifestyle Series windows with the respective performance package are compared to a single-pane wood or vinyl window. The energy efficiency and actual savings will vary by location. The average window energy efficiency is based on a national average of 94 modeled cities across the country and weighting based on population. For more details see pella.com/methodology.

¹¹ Improved airflow is based on calculated screen cloth openness. Screen cloth transmittance was measured using an integrated sphere spectrophotometer.

¹² Based on the composite results of a 5-panel strength analysis comparing TuffScreen and standard screening.

¹³ Appearance of exterior grille color may vary depending on the Low-E insulating glass selection.



Door Handing Guide

Exterior Entry Doors

Inswing Doors



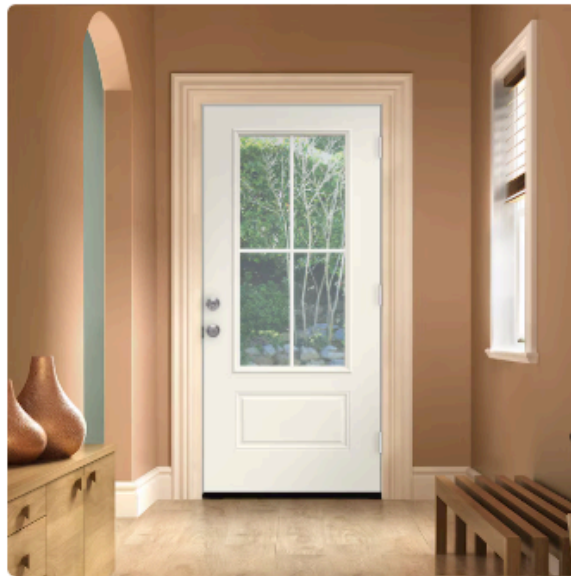
Outswing Doors



HOW TO ORDER JELD-WEN DOORS

- Find the right door for your project
- Place order online or in-store
- JELD-WEN manufactures your door—made to order.
- Quality Check to ensure quality construction
- JELD-WEN securely packs and ships your door.
- Pick up the door at the store or receive right to your house.
- Leave us a review!

JELD-WEN



[View All Images](#)

At a Glance



Finish: Primed



Material: Steel



Privacy Rating: 0



Handing: Universal reversible

JELD-WEN 36-in x 80-in x Steel Universal reversible Primed Slab Residential Insulating core Front Door

Item #5283370 | Model #LOWOLJW230500271

[Shop JELD-WEN](#)



\$649.⁰⁰

\$616.55 When you choose 5% savings on eligible purchases every day. [Learn How](#)

OR

\$55/mo Suggested payments with 12 month special financing. Ltd time. [Learn How](#)

Buy Now, Pay Later
As low as 0% APR for \$55.56/mo [Learn How](#)

As low as \$59/mo or 0% APR with [affirm](#). [See If You Qualify](#)

Manufacturer Color/Finish: Primed



[Get It Installed](#)

Pickup

Mon, Jun 29 (Est.)
5,000+ Available
FREE



Delivery

Tue, Jun 30
5,000+ available



FREE Pickup at Norman Lowe's

Wait time is typical for this product.

— +

[Add to Cart](#)

In-use/lifestyle images - other products, materials, and/or accessories not included

Members save more. [Sign in or join for FREE](#)





Product Guide & Specifications

BRUSHED SMOOTH LAP SIDING

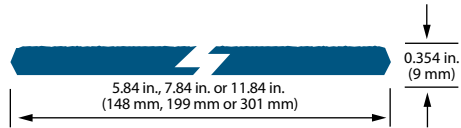
BRUSHED SMOOTH TEXTURE PROVIDES A MODERN LOOK THAT STILL REMAINS TIMELESS

- One of the most durable lap siding options on the market today
- Available in lengths up to 16' to help speed installation
- May create fewer seams than traditional 12' siding
- Primed for exceptional paint adhesion
- APA-certified lap siding
- Treated with the SmartGuard® process for superior protection against many weather conditions and resistance to termites and fungal decay



Brushed Smooth

38 SERIES BRUSHED SMOOTH LAP



DESCRIPTION	LENGTH	ACTUAL WIDTH	THICKNESS	PID NUMBER	WEIGHT
38 Series Lap	16 ft. (192 in.)(4.9 m)	5.84 in. (148 mm)	0.354 in. (9 mm)	45989	1.5 PSF
	16 ft. (192 in.)(4.9 m)	7.84 in. (199 mm)	0.354 in. (9 mm)	45990	1.5 PSF
	16 ft. (192 in.)(4.9 m)	11.84 in. (301 mm)	0.354 in. (9 mm)	45991	1.5 PSF

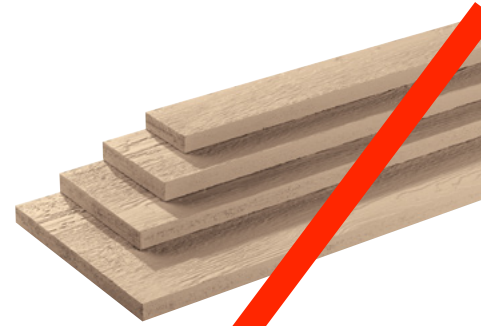
Lap Siding 16' Length	Reveal (size)		
	Area (sq. ft.)	4-7/8" (6")	6-7/8" (8")
100	16 pcs.	11 pcs.	7 pcs.
200	31 pcs.	22 pcs.	14 pcs.
300	47 pcs.	33 pcs.	21 pcs.
400	62 pcs.	44 pcs.	28 pcs.
500	77 pcs.	55 pcs.	35 pcs.
600	93 pcs.	66 pcs.	42 pcs.
700	108 pcs.	77 pcs.	49 pcs.
800	124 pcs.	88 pcs.	56 pcs.
900	139 pcs.	99 pcs.	63 pcs.
1000	154 pcs.	110 pcs.	69 pcs.
1500	231 pcs.	164 pcs.	104 pcs.
2000	308 pcs.	219 pcs.	138 pcs.
2500	385 pcs.	273 pcs.	173 pcs.
3000	462 pcs.	328 pcs.	207 pcs.
3500	539 pcs.	382 pcs.	242 pcs.
4000	616 pcs.	437 pcs.	276 pcs.
4500	693 pcs.	491 pcs.	311 pcs.
5000	770 pcs.	546 pcs.	345 pcs.

Specifications: LP® SmartSide® Trim

CEDAR TEXTURE TRIM

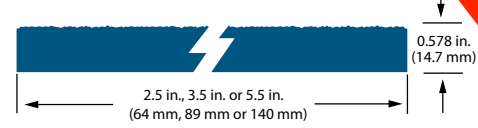
THE CLASSIC APPEARANCE OF CEDAR

- Use for corners, window and door trims
- Narrow widths for more design flexibility
- Primed for exceptional paint adhesion
- 16' length can result in faster installation and fewer seams
- Treated with the SmartGuard® process for superior protection against many weather conditions and resistance to termites and fungal decay



Cedar texture

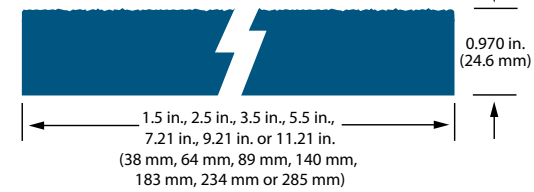
190 SERIES CEDAR TEXTURE TRIM



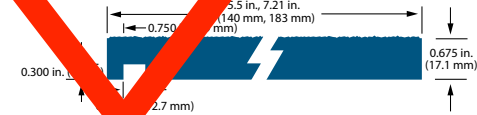
440 SERIES CEDAR TEXTURE TRIM



540 SERIES CEDAR TEXTURE TRIM



440 SERIES CEDAR TEXTURE PLOUGHED FASCIA



DESCRIPTION	LENGTH	ACTUAL WIDTH	THICKNESS	PID NUMBER	WEIGHT
190 Series Trim	16 ft. (192 in.)(4.9 m)	2.50 in. (64 mm)	0.578 in. (14.7 mm)	28448	2 PSF
	16 ft. (192 in.)(4.9 m)	3.50 in. (89 mm)	0.578 in. (14.7 mm)	28450	2 PSF
	16 ft. (192 in.)(4.9 m)	5.50 in. (140 mm)	0.578 in. (14.7 mm)	28452	2 PSF
440 Series Trim	16 ft. (192 in.)(4.9 m)	1.50 in. (38 mm)	0.675 in. (17.1 mm)	25877	2 PSF
	16 ft. (192 in.)(4.9 m)	2.50 in. (64 mm)	0.675 in. (17.1 mm)	25878	2 PSF
	16 ft. (192 in.)(4.9 m)	3.50 in. (89 mm)	0.675 in. (17.1 mm)	25880	2 PSF
	16 ft. (192 in.)(4.9 m)	5.50 in. (140 mm)	0.675 in. (17.1 mm)	25882	2 PSF
	16 ft. (192 in.)(4.9 m)	7.21 in. (183 mm)	0.675 in. (17.1 mm)	25883	2 PSF
	16 ft. (192 in.)(4.9 m)	9.21 in. (234 mm)	0.675 in. (17.1 mm)	25884	2 PSF
	16 ft. (192 in.)(4.9 m)	11.21 in. (285 mm)	0.675 in. (17.1 mm)	25885	2 PSF
540 Series Trim	16 ft. (192 in.)(4.9 m)	1.50 in. (38 mm)	0.970 in. (24.6 mm)	25886 *	3 PSF
	16 ft. (192 in.)(4.9 m)	2.50 in. (64 mm)	0.970 in. (24.6 mm)	25887 *	3 PSF
	16 ft. (192 in.)(4.9 m)	3.50 in. (89 mm)	0.970 in. (24.6 mm)	25888 *	3 PSF
	16 ft. (192 in.)(4.9 m)	5.50 in. (140 mm)	0.970 in. (24.6 mm)	25889 *	3 PSF
	16 ft. (192 in.)(4.9 m)	7.21 in. (183 mm)	0.970 in. (24.6 mm)	25890 *	3 PSF
	16 ft. (192 in.)(4.9 m)	9.21 in. (234 mm)	0.970 in. (24.6 mm)	25891 *	3 PSF
	16 ft. (192 in.)(4.9 m)	11.21 in. (285 mm)	0.970 in. (24.6 mm)	25892 *	3 PSF
	16 ft. (192 in.)(4.9 m)	11.21 in. (285 mm)	0.970 in. (24.6 mm)	25893 *	3 PSF
	16 ft. (192 in.)(4.9 m)	11.21 in. (285 mm)	0.970 in. (24.6 mm)	25894 *	3 PSF
440 Series Ploughed Fascia	16 ft. (192 in.)(4.9 m)	5.47 in. (140 mm)	0.62 in. (15.7 mm)	27240 *	2 PSF
	16 ft. (192 in.)(4.9 m)	7.21 in. (183 mm)	0.62 in. (15.7 mm)	27819 *	2 PSF

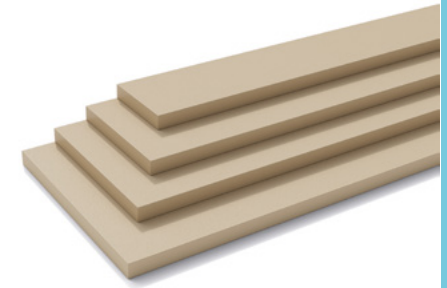
*Special order item. Requires minimum quantity and extended lead times.

Specifications: LP® SmartSide® Trim

BRUSHED SMOOTH TRIM

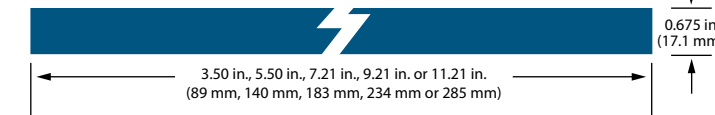
SMOOTH APPEARANCE, ADVANCED DURABILITY OF ENGINEERED WOOD

- Helps protect against moisture intrusion, impacts from hail, and damage from freeze/thaw cycles
- Treated with the SmartGuard® process for superior protection against many weather conditions and resistance to termites and fungal decay
- 16' length can result in faster installation and fewer seams
- Primed for exceptional paint adhesion
- Backed by an industry-leading 5/50-year limited warranty

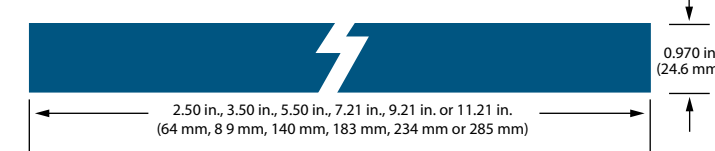


Brushed Smooth Trim

440 SERIES BRUSHED SMOOTH TRIM



540 SERIES BRUSHED SMOOTH TRIM



DESCRIPTION	LENGTH	ACTUAL WIDTH	THICKNESS	PID NUMBER	WEIGHT
440 Series Trim	16 ft. (192 in.)(4.9 m)	2.50 in. (64 mm)	0.675 in. (17.1 mm)	45999	2 PSF
	16 ft. (192 in.)(4.9 m)	3.50 in. (89 mm)	0.675 in. (17.1 mm)	46000	2 PSF
	16 ft. (192 in.)(4.9 m)	5.50 in. (140 mm)	0.675 in. (17.1 mm)	46001	2 PSF
	16 ft. (192 in.)(4.9 m)	7.21 in. (183 mm)	0.675 in. (17.1 mm)	46002	2 PSF
	16 ft. (192 in.)(4.9 m)	9.21 in. (234 mm)	0.675 in. (17.1 mm)	46003	2 PSF
	16 ft. (192 in.)(4.9 m)	11.21 in. (285 mm)	0.675 in. (17.1 mm)	46004	2 PSF
	16 ft. (192 in.)(4.9 m)	1.50 (38 mm)	0.675 in. (17.1 mm)	46012	2 PSF
540 Series Trim	16 ft. (192 in.)(4.9 m)	2.50 in. (64 mm)	0.970 in. (24.6 mm)	46010	3 PSF
	16 ft. (192 in.)(4.9 m)	1.50 (38 mm)	0.970 in. (24.6 mm)	46011	3 PSF
	16 ft. (192 in.)(4.9 m)	3.50 in. (89 mm)	0.970 in. (24.6 mm)	45992	3 PSF
	16 ft. (192 in.)(4.9 m)	5.50 in. (140 mm)	0.970 in. (24.6 mm)	45993	3 PSF
	16 ft. (192 in.)(4.9 m)	7.21 in. (183 mm)	0.970 in. (24.6 mm)	45995	3 PSF
	16 ft. (192 in.)(4.9 m)	9.21 in. (234 mm)	0.970 in. (24.6 mm)	45997	3 PSF
	16 ft. (192 in.)(4.9 m)	11.21 in. (285 mm)	0.970 in. (24.6 mm)	45998	3 PSF

— **1** +

Add to cart


Buy with

[More payment options](#)

✓ Pickup available at 502 Rusk Ave

Usually ready in 2-4 days

[View store information](#)

 **Shipping Not Shown?** We deliver nationwide via our trusted hotshot partners. Call us to request your custom shipping quote — fast response. 936-205-2615

This classic 1x6x16' #117 Double Teardrop Pine Siding/Exterior Cladding Profile is commonly found on older style homes (especially antique homes built in the early 1900s) and can sometimes be a difficult profile to source nowadays. It is sometimes known as “German siding” or “double ogee siding.”

This profile is commonly used for repairs to historic homes, and for additions that want to keep the same vintage aesthetic as the rest of the building. Our boards are kiln dried #2 grade Southern Yellow Pine. Most of the knots are tight, although there may be a loose knot here and there. If you are thinking about using our #117 Double Teardrop Siding to match existing siding purchased elsewhere, please make sure the material widths match to avoid troubles later on.

Board Pricing:

\$2.75/square foot

\$18.34/board

Specifications:

- 6.6 square feet of coverage per board
- 5” actual reveal across the width of the board once installed
- Kiln dried knotty #2 grade

More Information:

This profile is most commonly installed horizontally to help rain and moisture to slide off. It is recommended to apply an exterior sealer or primer on all surfaces before installation. Then caulk and paint after installation.

16 or 18 gauge nails work fine for interior installations, and 15 gauge works for exterior installs. Many people fill in the face nail holes by mixing some sawdust from cutting the boards with wood glue. This makes a paste that matches the color of the wood.

[Share](#)

You may also like



Pine #117 Double Tear Drop Siding 1x6x10'

~~\$11.47 USD~~
\$8.03 USD



1x6x12' #117 Double Teardrop Siding Yellow Pine

~~\$13.75 USD~~
\$9.63 USD



#105 Dutch Lap Siding 1x6x16' Knotty #2 Grade Pine (sold by the board)

~~\$20.01 USD~~
\$14.01 USD



#105 Dutch Lap Siding 1x6x12' Knotty #2 Grade Pine (sold by the board)

~~\$13.75 USD~~
\$9.63 USD









DATE	QT NUMBER
05-12-26	87891421

QUOTATION

QUOTE

Page 1
QT

S 476599
O SCISSORTAIL ROOFING AND CONST
D 300 W MAIN ST

S 476599
H SCISSORTAIL ROOFING AND CONST
I 300 W MAIN ST
P

T
O NORMAN, OK 73069

T
O NORMAN
OK 73069

JOB NO.	CUSTOMER PO.	COST CODE	EST SHIP DATE 05-08-50	CLERK # jeb6	SHIPPED FROM OKCTOKMW QT
---------	--------------	-----------	---------------------------	-----------------	-----------------------------

QTY	ITEM NO.	DESCRIPTION	U/M	UNIT PRICE	EXTENDED PRICE
		41t wood			
1	W3037504FFPS	3068 134 1FP 4L FIR SDL SHAKER	EA		
1	EFB30LID4SBK	37504 4L SDL CLR GLS 1 FP FIR	BOM		
1	APPBMS	EFB 3068 LI DB 458 SP 1D	BOM		
1	218DB	APP BRICKM SGL WM180 SOLID6'8"	BOM		
		2 1/8 DEADBOLT BORE	BOM		
		FOR FIBERGLASS, STEEL, OR WOOD			



****Unless otherwise specified herein, all prices shown shall only be valid for materials delivered for or received by the Purchaser within 1 days from the date of this quotation.****

SUBTOTAL	TAX	TOTAL
BFS RETAINS THE RIGHT TO ADJUST ALL QUOTED PRICES IN THE EVENT OF SHORTAGES, ENVIRONMENTAL IMPACTS, FREIGHT INCREASES, OR GOVERNMENTAL REGULATIONS.		

Printed: 05/12/2026 15:17:11
 Effective: 05/12/2026 Expires: 05/08/2050
 Location Name: OKLAHOMA CITY OK MILLWORK
 Phone: 405-348-6810

Thank you for the opportunity to quote.

QUOTATIONS SUBJECT TO CREDIT APPROVAL