

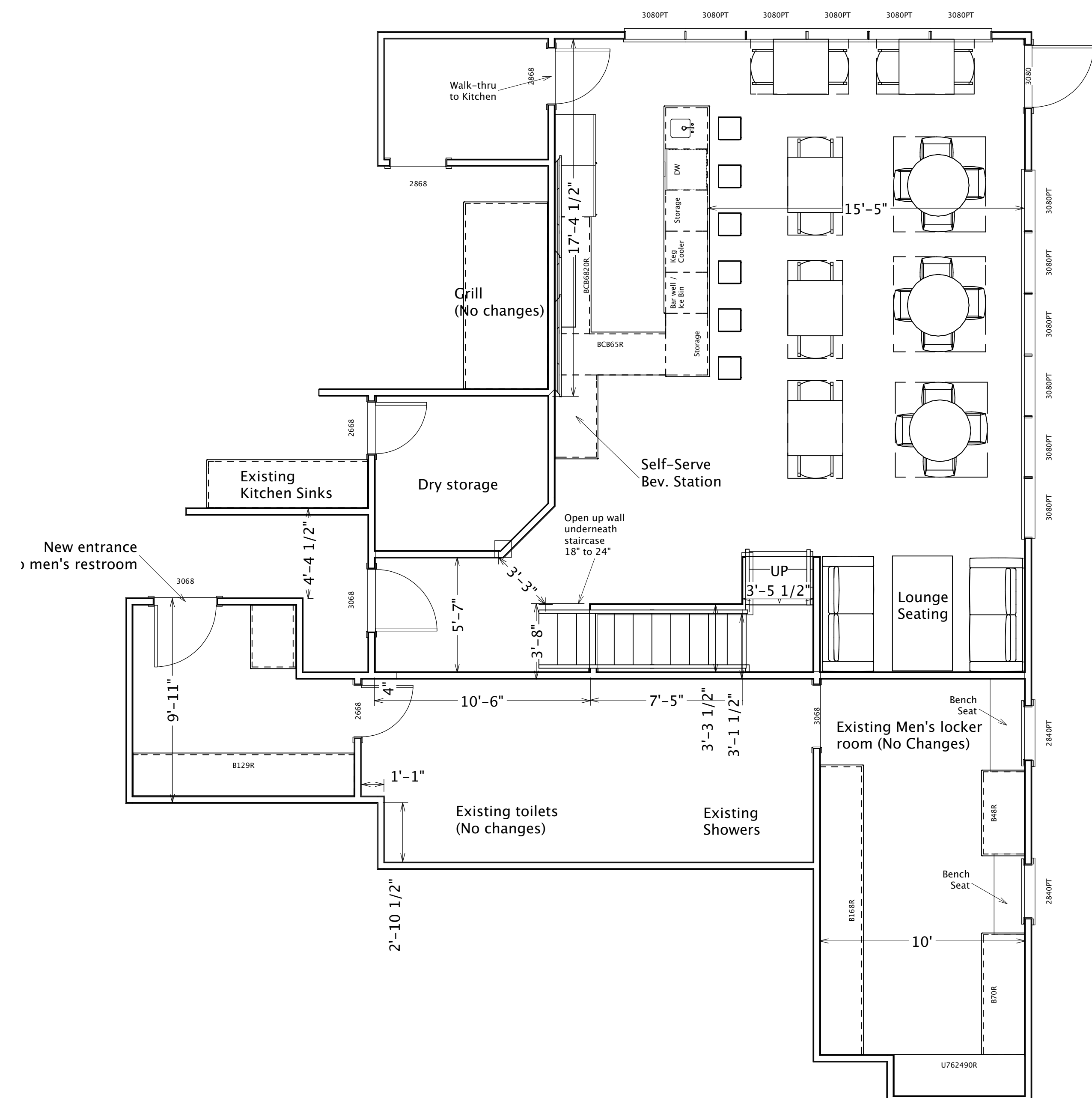
Square Footages:
Total building footage: 9943

Area affected by remodel work: 811

Unaffected area:
9131 sf

Existing Building Footage by use:
Main Dining Area: 2335
Foyer: 250
Office: 343
Upstairs storage: 708
Ladies Locker room / private dining: 917
Kitchen: 225
Retail (Pro Shop): 888
Club and Cart storage: 2592
Men's Locker Room / Private Dining: 1385
Men's Bathroom: 300

Proposed SF by use:
Main Dining Area: 2335
Foyer: 250
Office: 343
Upstairs storage: 708
Ladies Locker room / private dining: 917
Kitchen: 225
Retail (Pro Shop): 888
Club and Cart storage: 2592
Private Dining and bar area: 1385
Men's Bathroom: 300



Alterations and scope of work:
 Remove lockers and pony walls from men's locker/dining area
 Move entry door for men's bathroom into hallway
 Move entry door for small locker area into men's bathroom
 Frame new dry storage area with entry into kitchen
 Installation of new bar area, with bar sink, dishwasher, and ice maker
 New drains and supply line for bar sink and appliances
 Add under counter beverage refrigerators
 Added outlets for wall televisions
 Add windows on exterior walls

[illegible]

1833

DRAWINGS PROVIDED BY:
White Flowers Investments
4024 SE 111th Ct
Moore, OK 73160

DATE:

4/17/25

SCALE:

$$1/4'' = 1$$

SHEET:

P-1