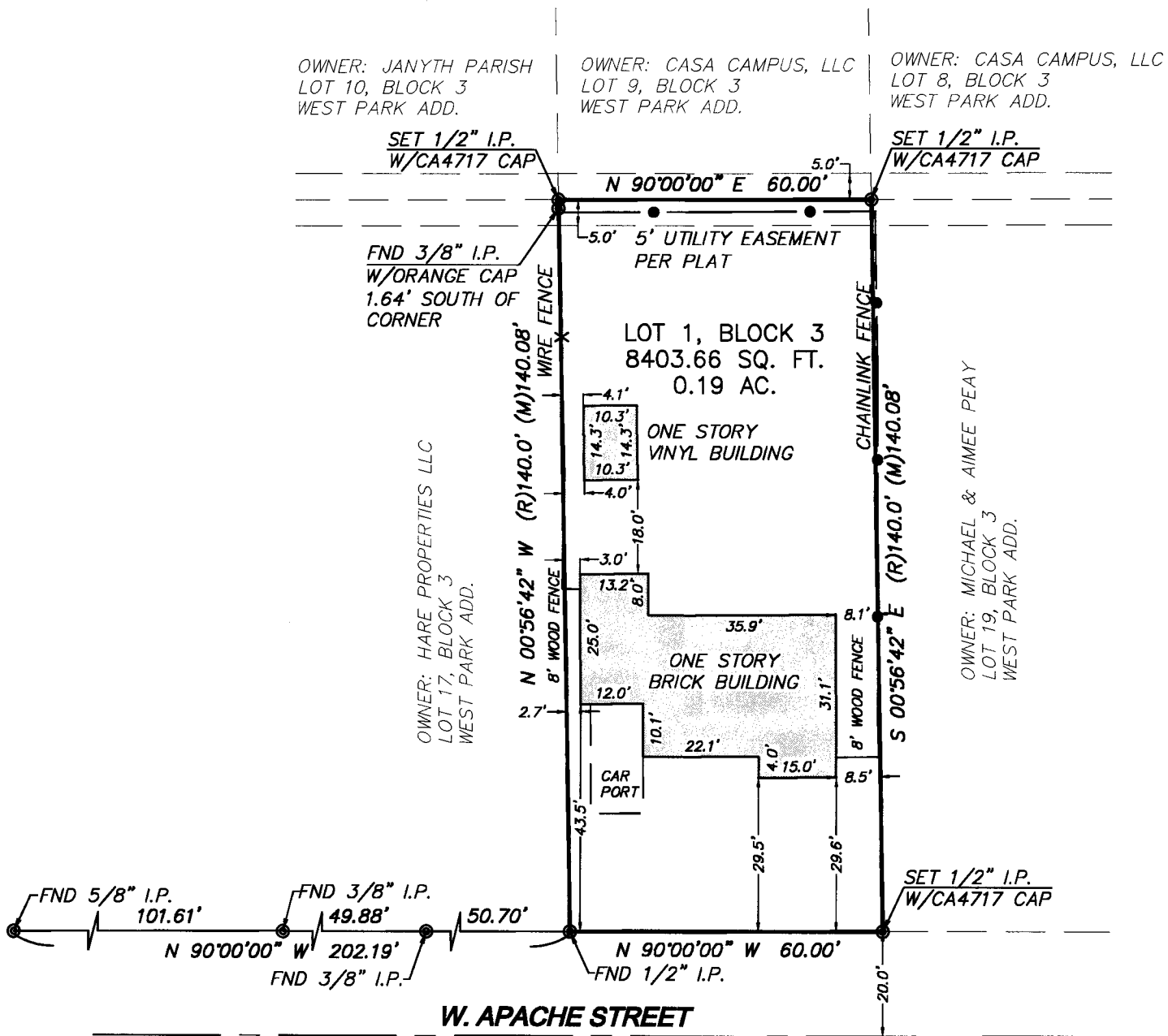


# PLAT OF SURVEY



### LEGAL DESCRIPTION

WARRANTY DEED — BOOK 6667, PAGE 398

*Lot Eighteen (18), in Block Three (3), of WESTPARK  
ADDITION, to Norman, Cleveland County, Oklahoma,  
according to the recorded plat thereof.*

## NOTES

*Basis of Bearing: Assumed N 90°00'00" W  
along the South line of Block 3, West Park.*

*I, Ryan Doudican, a Registered Professional Land Surveyor, do hereby certify that I, or others under my direct supervision, have made a careful survey of the property shown hereon.*

*This plat of survey meets the Minimum*