

PAVING QUANTITIES**		
QUANTITY	UNIT	DESCRIPTION
696	LF	2" TYPE S4 ASPHALT
696	LF	4" TYPE S3 ASPHALT
1246	LF	4" TYPE S2 ASPHALT
1246	SY	8" MODIFIED SUBGRADE
1148	SY	8" CURB & GUTTER
1148	SY	SAWCUT & REMOVE CURB & GUTTER

\*\*FOR STRIPING QUANTITIES SEE SH. 3

DRAINAGE QUANTITIES		
QUANTITY	UNIT	DESCRIPTION
2	EA	CONNECT TO EXIST. 18" RCP
17	LF	18" RCP
1	EA	DES. 2-3 INLET W/ 4 GRATES & 8 HOODS
1	EA	DES. 2-2 INLET W/ 4 GRATES & 6 HOODS
2	EA	REMOVE EXISTING INLET
8	TON	TYPE 'A' AGGREGATE

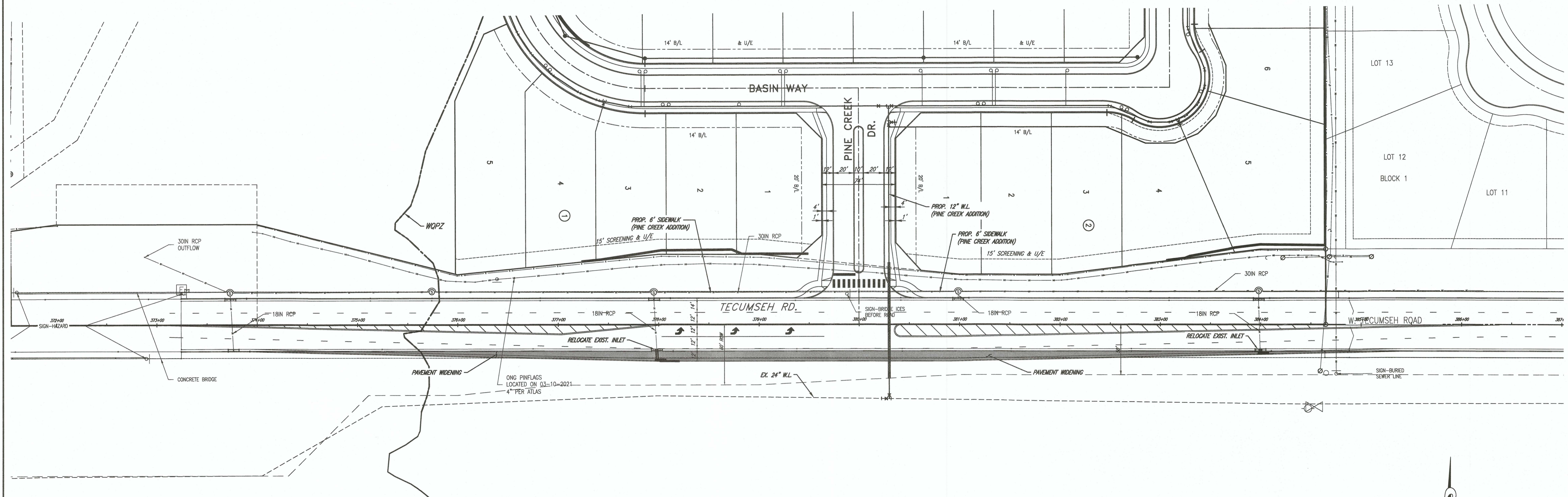
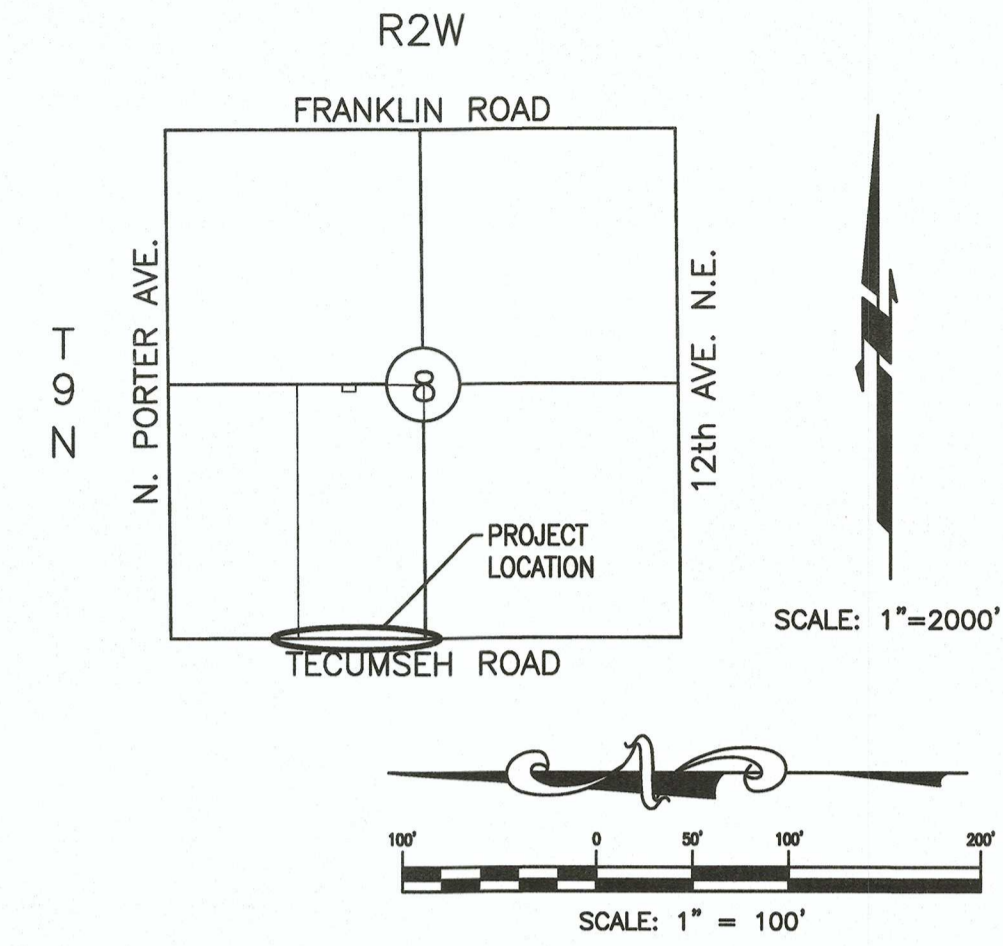
# PAVING & DRAINAGE LOCATION PLAN

## PINE CREEK ADDITION – TECUMSEH RD. WIDENING

A PART OF THE S.W. 1/4 OF SECTION 8, T9N, R2W, I.M.  
NORMAN, CLEVELAND COUNTY, OKLAHOMA

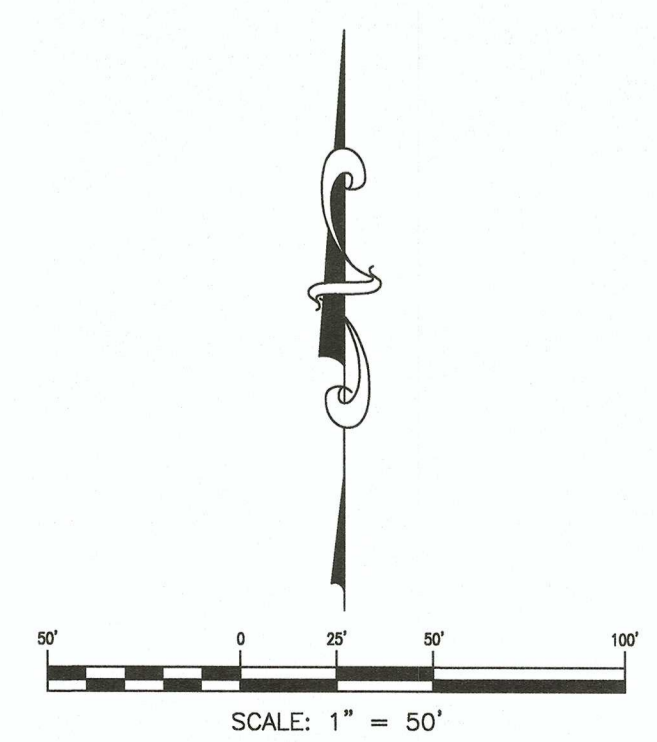
**GENERAL NOTES:**

1. ENGINEER'S ESTIMATE OF QUANTITIES SHOWN IS TO FACILITATE THE REVIEW OF THE REGULATORY AGENCIES. CONTRACTOR SHALL NOT USE THIS ENGINEER'S ESTIMATE OF QUANTITIES IN BIDDING OR CALCULATING QUANTITIES OR ORDERING CONSTRUCTION MATERIALS. FOR SUCH PURPOSES, CONTRACTOR SHALL REFER TO CONSTRUCTION PLANS, DESIGN DETAILS, SPECIFIED STANDARDS, PROJECT SPECIFICATIONS AND SHALL CALCULATE HIS/HER OWN QUANTITIES. IT IS THE CONTRACTOR'S RESPONSIBILITY TO CONSTRUCT THE PROJECT ACCORDING TO THE CONSTRUCTION PLANS, DESIGN DETAILS, SPECIFIED STANDARDS, SPECIFICATIONS AND SPECIAL CONDITIONS. ANY ITEM OR WORK NOT INCLUDED IN ENGINEER'S ESTIMATE BUT SHOWN IN CONSTRUCTION PLANS, DETAILS AND SPECIFIED IN STANDARDS SHALL BE CONSIDERED INCIDENTAL CONSTRUCTION, THE COST OF WHICH SHALL BE INCLUDED IN THE COST OF OTHER ITEMS.



**GENERAL NOTES**

ENGINEER'S ESTIMATE OF QUANTITIES SHOWN IS TO FACILITATE THE REVIEW OF THE REGULATORY AGENCIES. CONTRACTOR SHALL NOT USE THIS ENGINEER'S ESTIMATE OF QUANTITIES IN BIDDING OR CALCULATING QUANTITIES OR ORDERING CONSTRUCTION MATERIALS. FOR SUCH PURPOSES, CONTRACTOR SHALL REFER TO CONSTRUCTION PLANS, DESIGN DETAILS, SPECIFIED STANDARDS, PROJECT SPECIFICATIONS AND SHALL CALCULATE HIS/HER OWN QUANTITIES. IT IS THE CONTRACTOR'S RESPONSIBILITY TO CONSTRUCT THE PROJECT ACCORDING TO THE CONSTRUCTION PLANS, DESIGN DETAILS, SPECIFIED STANDARDS, SPECIFICATIONS AND SPECIAL CONDITIONS. ANY ITEM OR WORK NOT INCLUDED IN ENGINEER'S ESTIMATE BUT SHOWN IN CONSTRUCTION PLANS, DETAILS AND SPECIFIED IN STANDARDS SHALL BE CONSIDERED INCIDENTAL CONSTRUCTION, THE COST OF WHICH SHALL BE INCLUDED IN THE COST OF OTHER ITEMS.



© SMC CONSULTING ENGINEERS, P.C. ALL RIGHTS RESERVED THESE DOCUMENTS MAY NOT BE USED FOR ANY PURPOSES WITHOUT PRIOR WRITTEN PERMISSION FROM SMC CONSULTING ENGINEERS, P.C.

**PINE CREEK ADDITION –  
TECUMSEH RD. WIDENING**  
  
**TECUMSEH RD. & 12th AVE. N.E.  
NORMAN, OKLAHOMA**

<b>SMC</b> Consulting Engineers, P.C. 815 West Main - Oklahoma City, OK 73106 PH: 405-292-7715 Fax: 405-232-7659	By: _____	Date: _____
	No. _____	Revision _____

PROJECT NO.: 6432.01  
DATE: 8/19/2022  
SCALE: 1" = 50'  
DRAWN BY: S.D.S.  
ENGINEER: Christopher D. Anderson  
P.E. NUMBER: 18288

**PAVING & DRAINAGE  
LOCATION PLAN**

SHEET NO.  
**2**