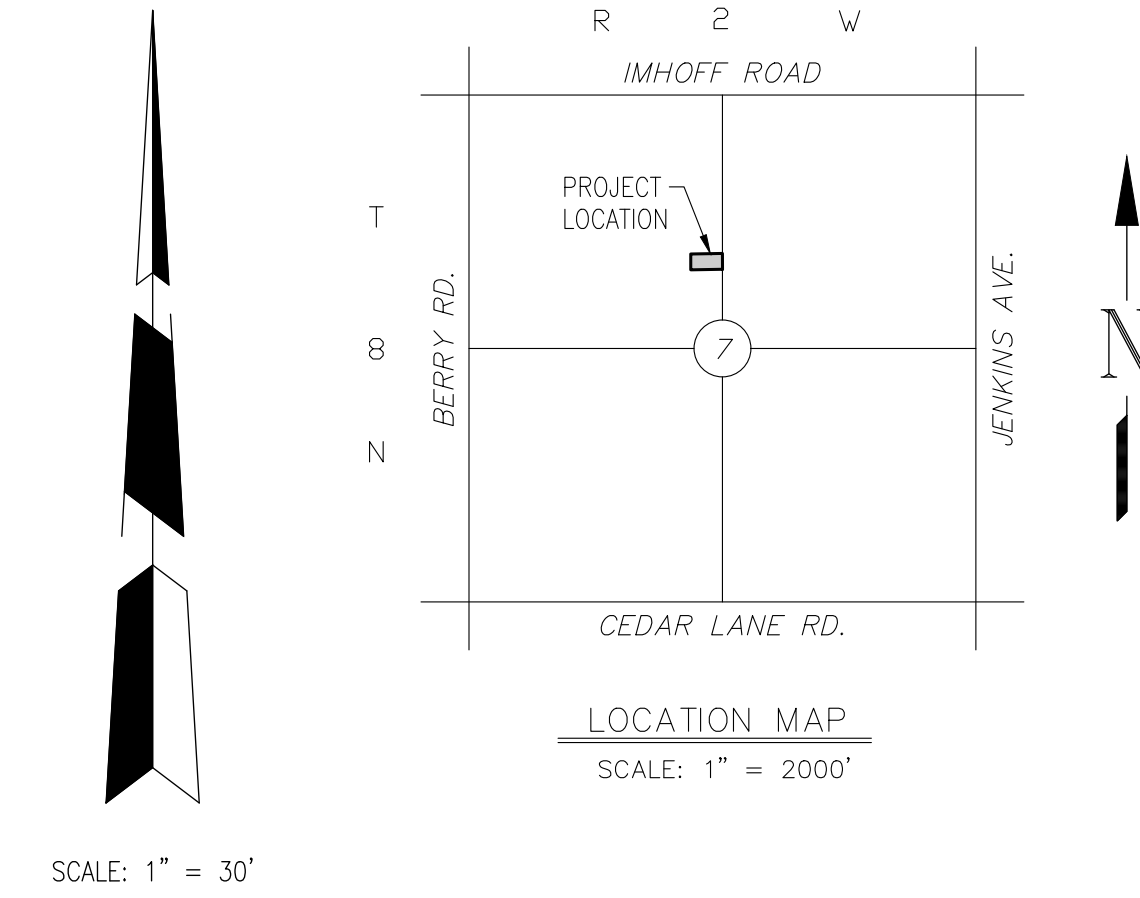
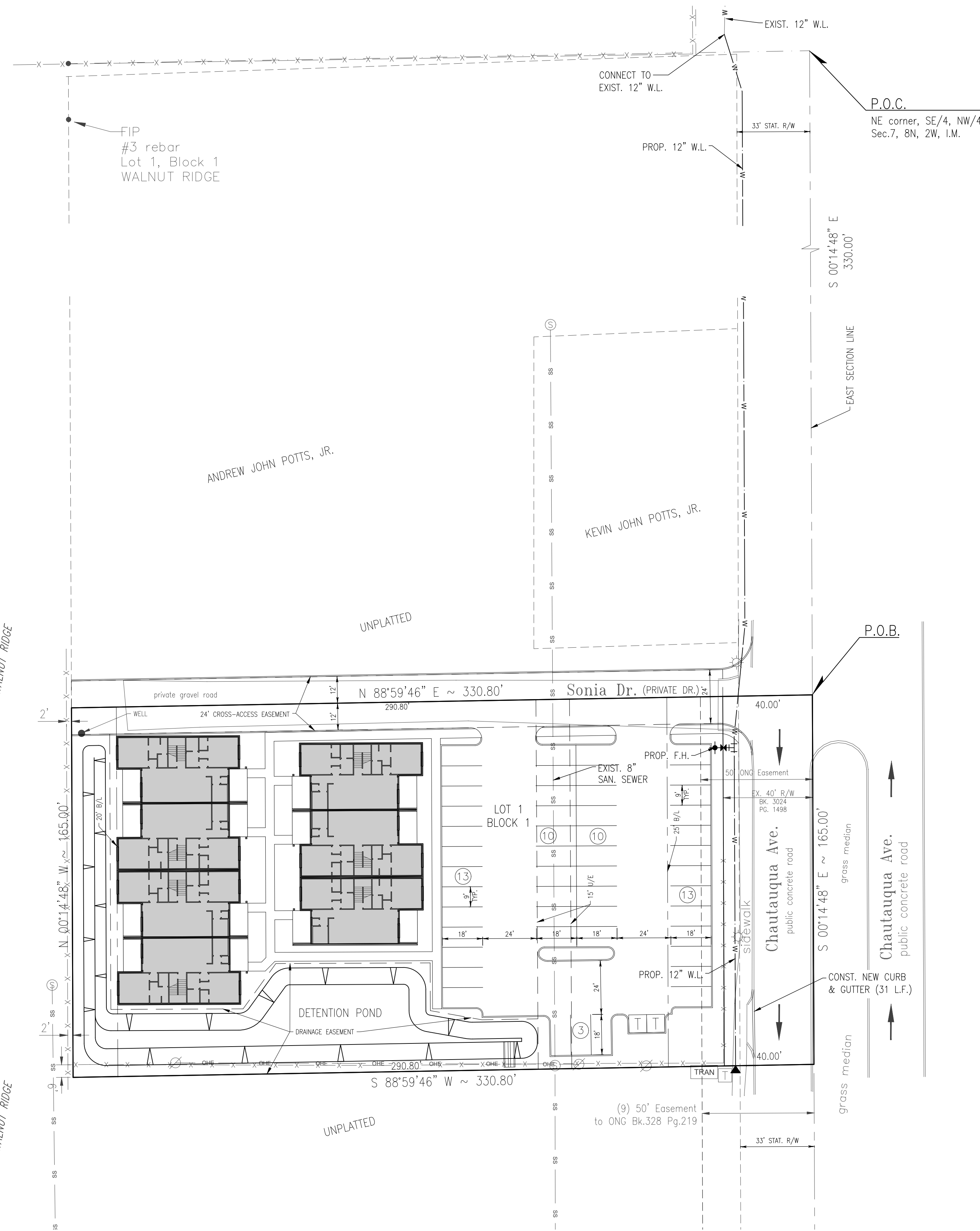


PRELIMINARY SITE PLAN
THE OLD DAIRY FARM

A PART OF THE N.W. 1/4 OF SECTION 7, T8N, R2W, I.M.
 NORMAN, CLEVELAND COUNTY, OKLAHOMA



NOTES:

1. FIRE HYDRANTS WILL BE LOCATED AND INSTALLED IN ACCORDANCE WITH THE FINAL PLANS AND THE CITY OF NORMAN STANDARDS AND SPECIFICATIONS. FIRE HYDRANTS WILL BE LOCATED WITHIN 3 TO 6 FEET OF CURB.
2. ALL WATER LINES TO BE 12" DIA. UNLESS NOTED OTHERWISE.
3. EXISTING ZONING IS A-2. PROPOSED ZONING IS RM-6.

STORM DRAINAGE DETENTION FACILITY EASEMENT

DRAINAGE DETENTION FACILITY EASEMENTS ARE HEREBY ESTABLISHED AS SHOWN TO PROVIDE FOR DETENTION OF STORM SURFACE WATER AND CONSTRUCTED AS APPROVED BY THE CITY ENGINEER. ALL MAINTENANCE WITHIN THE DRAINAGE DETENTION FACILITY EASEMENT SHALL BE THE RIGHT, DUTY AND RESPONSIBILITY OF THE PROPERTY OWNERS ASSOCIATION IN THE PLAT OF THE OLD DAIRY FARM; HOWEVER, IF MAINTENANCE IS NEGLECTED OR SUBJECT TO OTHER UNUSUAL CIRCUMSTANCES AND IS DETERMINED TO BE A HAZARD OR THREAT TO PUBLIC SAFETY BY THE CITY, CORRECTIVE MAINTENANCE MAY BE PERFORMED BY THE GOVERNING JURISDICTION WITH COSTS ASSESSED TO AND BORN UPON SAID PROPERTY OWNERS ASSOCIATION. OFFICIALS REPRESENTING THE PUBLIC WORKS DEPARTMENT, SHALL HAVE THE RIGHT TO ENTER UPON THE EASEMENT FOR PURPOSES OF PERIODIC INSPECTION AND/OR CORRECTIVE MAINTENANCE OF THE FACILITY. UPON RECEIVING WRITTEN APPROVAL FROM THE PUBLIC WORKS DEPARTMENT, PROPERTY OWNERS ASSOCIATION MAY CONSTRUCT IMPROVEMENTS WITHIN THE EASEMENT, PROVIDED THE IMPROVEMENT DOES NOT INTERFERE WITH THE FUNCTION OF THE DETENTION FACILITY.

© SMC CONSULTING ENGINEERS, P.C. ALL RIGHTS RESERVED. THESE DOCUMENTS MAY NOT BE USED FOR ANY PURPOSES WITHOUT PRIOR WRITTEN PERMISSION FROM SMC CONSULTING ENGINEERS, P.C.

THE OLD DAIRY FARM
CHAUTAQUA AVE. & HIGHWAY 9
NORMAN, OKLAHOMA

SMC
 Consulting Engineers, P.C.
 6100 N. Lincoln Blvd.
 Oklahoma City, Oklahoma 73121
 PH: 405-232-7715 Fax: 405-232-7659
 Website: www.smcokc.com

OKLAHOMA CERTIFICATE OF AUTHORIZATION NO. CA 464 EXP. 09/29/2025

No.	Revision	Date
1	Revised per DRT comments	02/15/2024

PROJECT NO.: 6569.00
 DATE: 2/29/24
 SCALE: 1" = 30'
 DRAWN BY: D.G.
 ENGINEER:
 P.E. NUMBER:

Preliminary Site Plan

N:\WORK\6569.00 - PFE JACKSONVILLE PRELIMINARY SITE PLAN.DWG
 Printed by: Corey Gartin @ 3/20/24 11:52 AM