

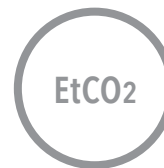
EMMA™ Capnograph

Portable Real-time Capnography



Actual Size

Measurements



EtCO2

End-Tidal Carbon Dioxide



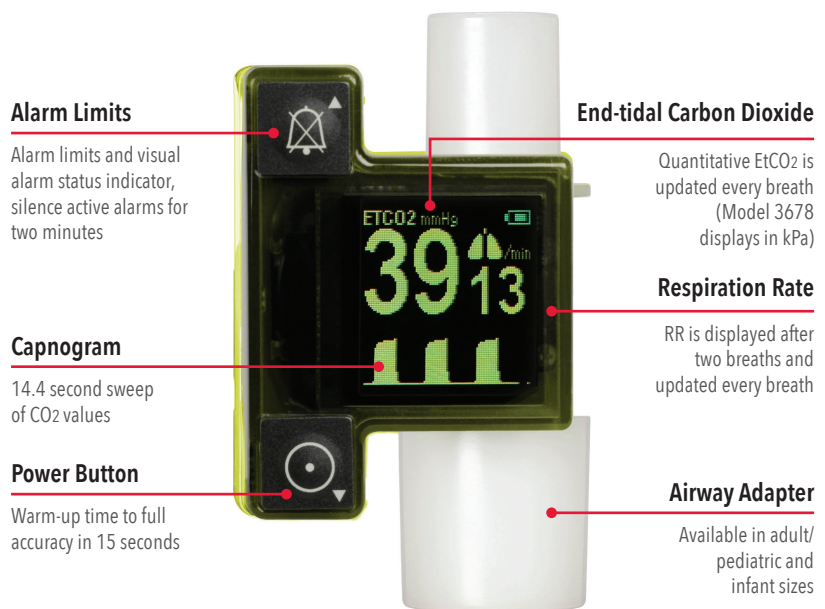
RR

Respiration Rate

- > **Immediate results** – minimal warm-up time, with end-tidal carbon dioxide (EtCO₂) and respiration rate (RR) measurements and real-time EtCO₂ waveform displayed in 15 seconds
- > **Small, portable capnograph** – lightweight design fits in the palm of your hand for mobility and convenience during short-term EtCO₂ monitoring of adult, pediatric, and infant patients
- > **Designed to fit easily onto a breathing circuit** – flexible use at multiple points of care including pre-hospital, emergency medicine, operating room, intensive care unit, and long-term acute care
 - In a study published in *Circulation*, researchers stated, "continuous quantitative waveform capnography is recommended for confirmation and monitoring of endotracheal tube placement."¹
- > **Rugged design** for reliable operation in challenging environments
- > **Easy to maintain** – no routine calibration required

Features

- > **Clear, continuous capnogram** of carbon dioxide values
- > **Simple, easy-to-use interface** for quick set-up and one-touch programming
- > **Audible and visual alarm system** for No Adapter, Clogged Adapter, No Breath (Apnea), Low Battery and adjustable High and Low EtCO₂ alarm
- > **Battery life for up to 10 hours** of normal use with two standard AAA lithium batteries



Performance

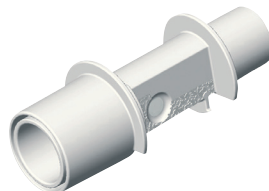
RANGES	ENVIRONMENTAL
CO ₂ 0-99 mmHg 0-9.9 kPa	Operating temperature -5 to 50° C (23 to 122° F)
RR 3-150 bpm	Operating atmospheric pressure 70 to 120 kPa
ACCURACY (STANDARD CONDITIONS)	Operating humidity 10-95%, non-condensing
CO ₂ 0-40 mmHg ±2 mmHg; 41-99 mmHg 6% of reading 0-5.3 kPa ±0.3 kPa; 5.4-9.9 kPa 6% of reading	Storage temperature -30 to 70° C (-22 to 158° F)
RR ±1 bpm	Storage atmospheric pressure 50 to 120 kPa
BATTERIES	PHYSICAL CHARACTERISTICS
Type 2 (two) AAA Cell Alkaline or Lithium	Dimensions 2.1 x 1.5 x 1.5" (5.2 x 3.9 x 3.9 cm)
Battery life 6 hours (Alkaline) 10 hours (Lithium)	Weight 2.1 oz (59.5 g) (with Alkaline batteries)
	ADAPTER INFORMATION
	Dead space adult/pediatric 6 ml
	Dead space infant 1 ml

Kit

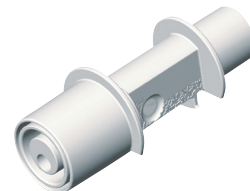


- > **EMMA Kit***
EMMA (mmHg) PN 3639
EMMA (kPa) PN 3678

Accessories



- > **EMMA Airway Adapter**
Adult/Pediatric
Box of 25
PN 17448



- > **EMMA Airway Adapter**
Infant
Box of 10
PN 17449

*In order for the EMMA Kit to provide readings, either of the listed airway adapters is required. Kit includes EMMA, pouch, and lanyard.

¹ Neumar RW et al. *Circulation*. 2010;122:S729-S767.

Caution: Federal (USA) law restricts this device to sale by or on the order of a physician. See instructions for use for full prescribing information, including indications, contraindications, warnings, and precautions.

Masimo U.S.
Tel: 1 877 4 Masimo
info-america@masimo.com

Masimo International
Tel: +41 32 720 1111
info-international@masimo.com

