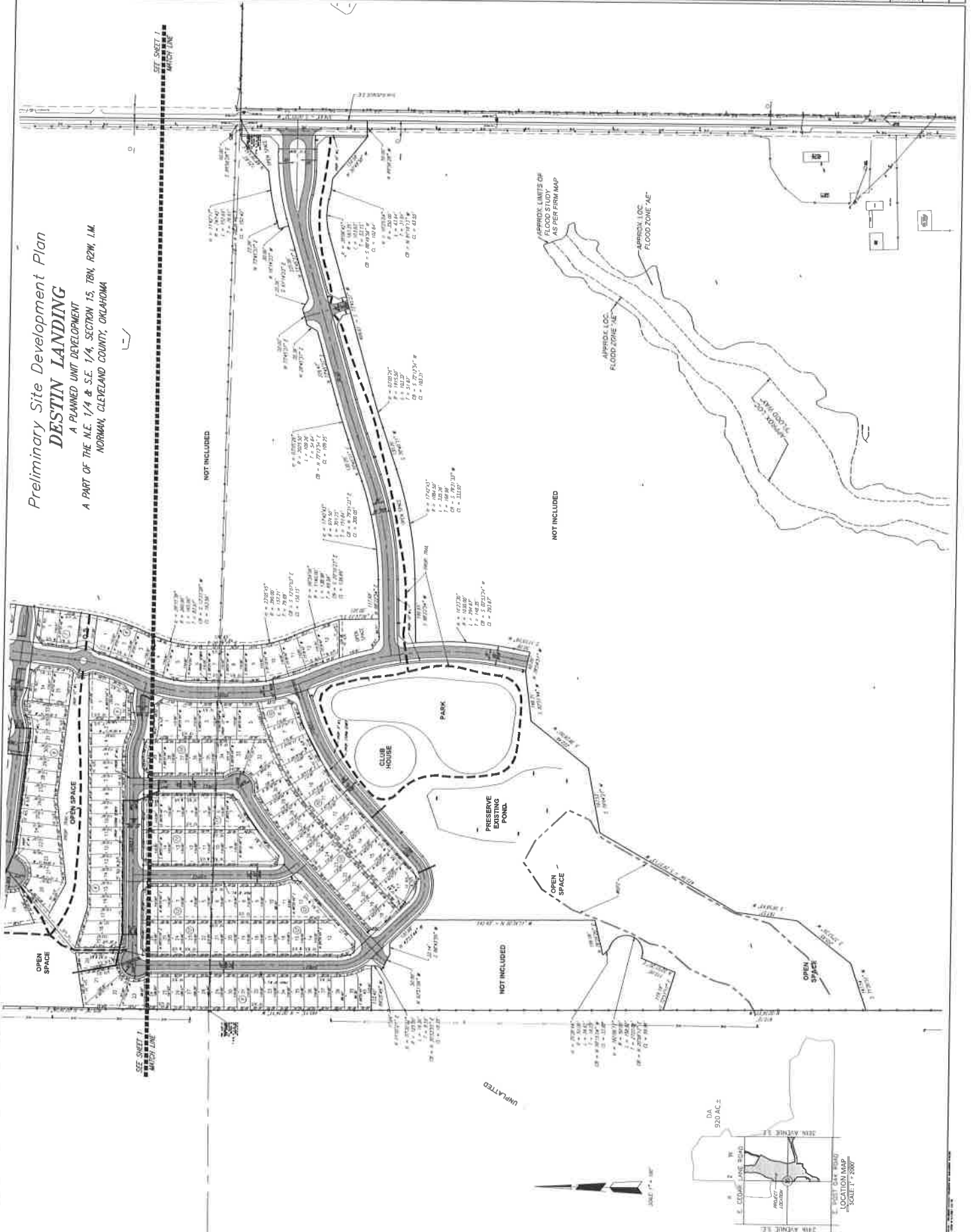


Preliminary Site Development Plan
DESTIN LANDING
 A PLANNED UNIT DEVELOPMENT
 A PART OF THE N.E. 1/4 & S.E. 1/4, SECTION 15, T8N, R2W, I.M.
 NORMAN, CLEVELAND COUNTY, OKLAHOMA



OWNER: J. ZEIGLER, JR.
 2800 N. W. 10th St., Suite 100
 Norman, Oklahoma 73061

DESIGNER: SMC
 1000 N. W. 10th St., Suite 100
 Norman, Oklahoma 73061