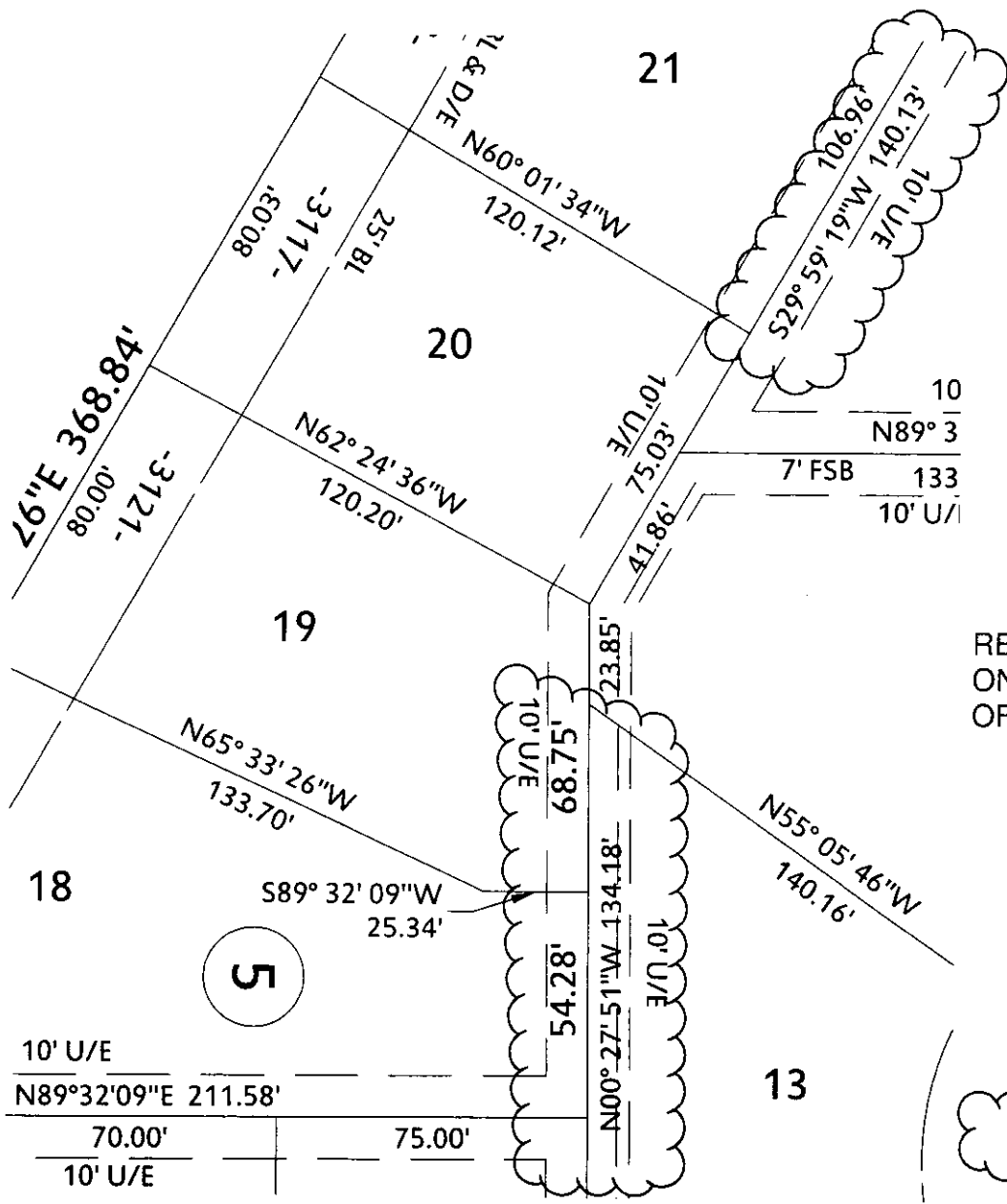


PLAT CORRECTIONS  
**ST. JAMES PARK SECTION 5**  
 A PART OF THE SW/4 OF SECTION 10, T8N, R2W, I.M.  
 NORMAN, CLEVELAND COUNTY, OKLAHOMA

**EXHIBIT "B"**



REVISED DIMENSIONS  
 ON LOTS 18, 19, 13, & 1  
 OF BLOCK 5

 CORRECTED DIMENSIONS