

**PRELIMINARY PLAT**  
**DESTIN LANDING**

A PLANNED UNIT DEVELOPMENT  
A PART OF THE N.E. 1/4 & S.E. 1/4, SECTION 15, T8N, R27W, 14M.  
NORMAN, CLEVELAND COUNTY, OKLAHOMA

**GENERAL NOTES:**  
1. THIS PLAT IS A PRELIMINARY PLAT AND IS SUBJECT TO THE APPROVAL OF THE CLEVELAND COUNTY BOARD OF COMMISSIONERS.  
2. THE PLAT IS SUBJECT TO THE APPROVAL OF THE CLEVELAND COUNTY BOARD OF COMMISSIONERS.  
3. THE PLAT IS SUBJECT TO THE APPROVAL OF THE CLEVELAND COUNTY BOARD OF COMMISSIONERS.  
4. THE PLAT IS SUBJECT TO THE APPROVAL OF THE CLEVELAND COUNTY BOARD OF COMMISSIONERS.  
5. THE PLAT IS SUBJECT TO THE APPROVAL OF THE CLEVELAND COUNTY BOARD OF COMMISSIONERS.

**LEGAL DESCRIPTION:**  
A part of the NE 1/4 and SE 1/4 of Section 15, T8N, R27W, 14M, of the 1936 Meridian, Norman, Oklahoma County, Oklahoma, containing approximately 36.50 acres, more or less, as shown on the plat hereof.

**RESIDENTIAL USE - 301**  
**OPEN SPACE AREA = 36.50 AC.**

**LOCAL DESCRIPTION:**  
This is a preliminary plat for a planned unit development consisting of residential lots and open space areas. The residential lots are to be used for single-family detached dwellings. The open space areas are to be used for recreational purposes and are to be maintained as such.

**NOT INCLUDED**

**NOT INCLUDED**

**NOT INCLUDED**

**NOT INCLUDED**

**NOT INCLUDED**

**NOT INCLUDED**

**NOT INCLUDED**

**NOT INCLUDED**

**NOT INCLUDED**

**NOT INCLUDED**

**NOT INCLUDED**

**NOT INCLUDED**

**NOT INCLUDED**

**NOT INCLUDED**



**LOCATION MAP**  
SCALE = 1" = 100'

**RESIDENTIAL USE - 301**  
**OPEN SPACE AREA = 36.50 AC.**

**NOT INCLUDED**

**NOT INCLUDED**

**NOT INCLUDED**

**NOT INCLUDED**

**NOT INCLUDED**

**NOT INCLUDED**

**NOT INCLUDED**

**NOT INCLUDED**

**NOT INCLUDED**

**NOT INCLUDED**

**NOT INCLUDED**

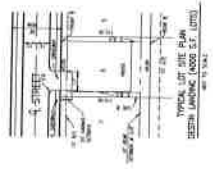
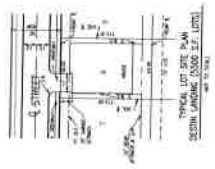
**NOT INCLUDED**

**NOT INCLUDED**



**DESTIN LANDING**  
**E. CEDAR LANE & 30TH AVE. S.E.**  
**NORMAN, OKLAHOMA**

<b>PRELIMINARY LAYOUT</b>	DATE: 11/15/11
<b>SMG</b>	SCALE: 1" = 100'
<b>1 of 2</b>	



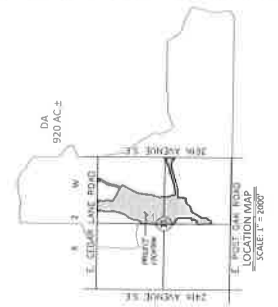
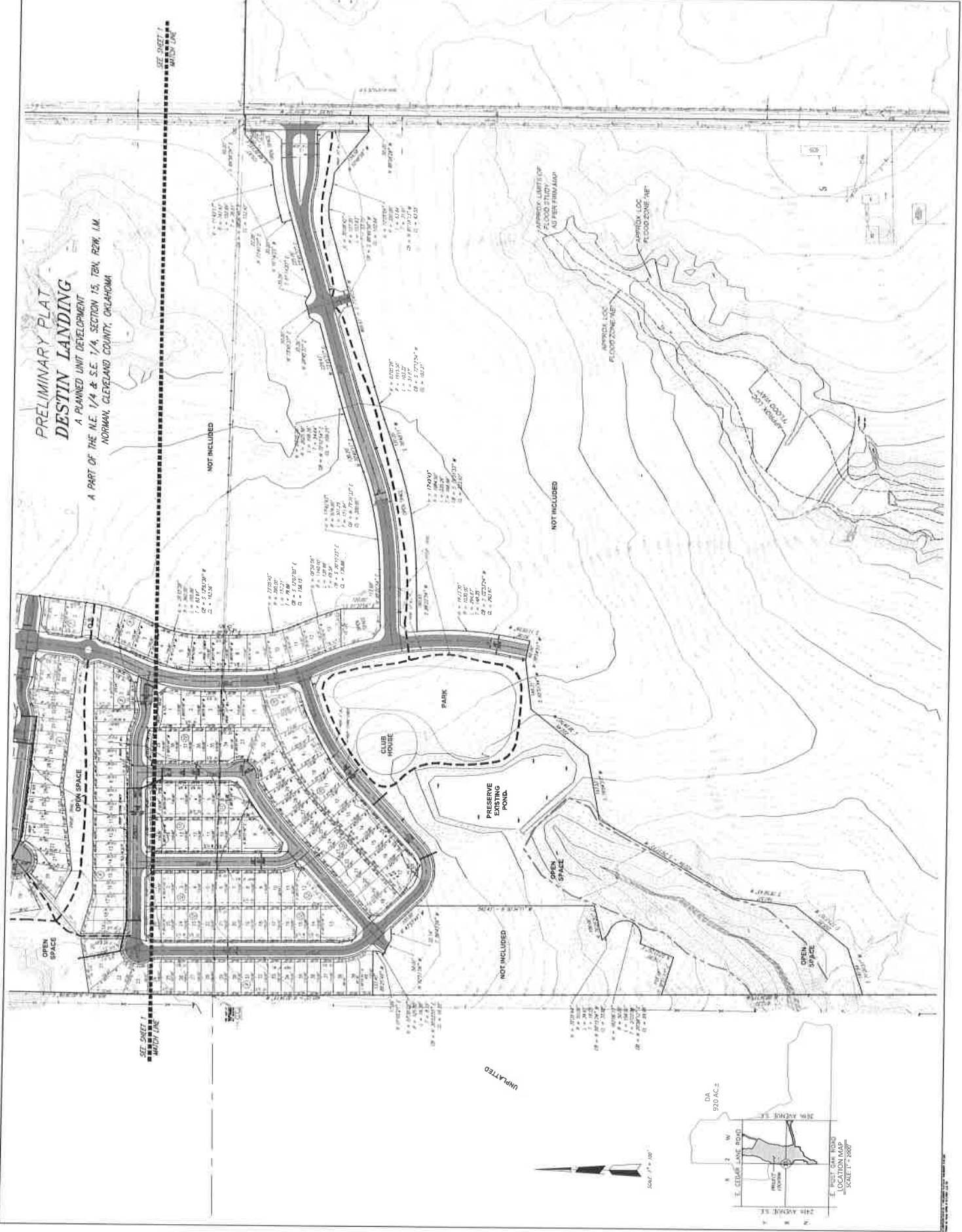
- NOTES:**
1. THE PLAT IS SUBJECT TO THE APPROVAL OF THE CLEVELAND COUNTY BOARD OF COMMISSIONERS.
  2. THE PLAT IS SUBJECT TO THE APPROVAL OF THE CLEVELAND COUNTY BOARD OF COMMISSIONERS.
  3. THE PLAT IS SUBJECT TO THE APPROVAL OF THE CLEVELAND COUNTY BOARD OF COMMISSIONERS.
  4. THE PLAT IS SUBJECT TO THE APPROVAL OF THE CLEVELAND COUNTY BOARD OF COMMISSIONERS.
  5. THE PLAT IS SUBJECT TO THE APPROVAL OF THE CLEVELAND COUNTY BOARD OF COMMISSIONERS.
  6. THE PLAT IS SUBJECT TO THE APPROVAL OF THE CLEVELAND COUNTY BOARD OF COMMISSIONERS.
  7. THE PLAT IS SUBJECT TO THE APPROVAL OF THE CLEVELAND COUNTY BOARD OF COMMISSIONERS.
  8. THE PLAT IS SUBJECT TO THE APPROVAL OF THE CLEVELAND COUNTY BOARD OF COMMISSIONERS.
  9. THE PLAT IS SUBJECT TO THE APPROVAL OF THE CLEVELAND COUNTY BOARD OF COMMISSIONERS.
  10. THE PLAT IS SUBJECT TO THE APPROVAL OF THE CLEVELAND COUNTY BOARD OF COMMISSIONERS.

DESTIN LANDING  
 E CEDAR LANE & 30TH AVE. S.E.  
 NORMAN, OKLAHOMA



DESIGNED BY  
 SMC CONSULTING ENGINEERS, P.C.  
 2722 N. UNIVERSITY BLVD.  
 SUITE 200  
 NORMAN, OKLAHOMA 73069  
 PHONE: (405) 831-2222  
 FAX: (405) 831-2223  
 WWW.SMCENGINEERS.COM

**PRELIMINARY PLAT**  
**DESTIN LANDING**  
 A PLANNED UNIT DEVELOPMENT  
 A PART OF THE N.E. 1/4 & S.E. 1/4, SECTION 15, T8N. 23K. 14M.  
 NORMAN, CLEVELAND COUNTY, OKLAHOMA



UNPLATTED