















































733

ADT





KAΘ

*Kappa Alpha Theta*





















































# 6100

VINYL SINGLE HUNG WINDOW



800.475.5061 | [gerkin.com](http://gerkin.com)



# 6100

## VINYL SINGLE HUNG WINDOW

### DECADES OF PROVEN PERFORMANCE

The Comfort Series model 6100 single hung is a new generation window for Gerkin! After decades of proven performance with our single hung, we found a way to make it even better! Here at Gerkin, we only make changes in our products to ensure better performance. Many competitors are working hard at seeing how cheap they can build a single hung. We believe our customers want a quality product and the best value. That's why we build our windows to perform among the best in the industry. The 6500 window compliments the 6100 single hung as a stand alone fixed window or can be used to mull fixed and specialty shapes in order to create custom configurations.





# 6100

## VINYL SINGLE HUNG WINDOW

### 6100 SERIES | FEATURES

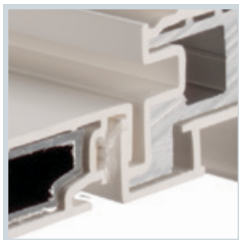
The 6100 is highlighted by a stylish 2 1/2" beveled frame design, fusion welded sash and frame with triple weather seals. We have designed this window to perform at a very high level through the use of multiple vinyl chambers, internal aluminum reinforcements, heavy-duty block and tackle balances as well as warm edge technology glass! If you're looking for a high performance single hung window with easy operation and low maintenance all at a great value, look no further than the Comfort Series 6100!

**Multiple Seal Weatherstripping:**

Triple fin-seal weatherstripping on the jambs with additional weatherstripping at the interlock provides a tight air and water seal at the sash.

**Sloped Sill Design:**

Our single hung utilizes a fully sloped, weepless sill design. This provides for excellent drainage and air infiltration performance. Plus, there are no weeps to get plugged!

**Interlock:**

The 6100 has a full interlock with fin seal weatherstripping at the meeting rail. Its design provides a positive seal and easy operating engagement.

**Extruded Screen:**

Gerkin offers more strength in its screen frame in order to achieve greater screen durability. The screen is removable without removing the sash.

**Balance / Tilt Latches:**

6100 operates on a smooth operating block and tackle balance system. The tilt latches are recessed into the sash for a more attractive appearance.

**Frame:**

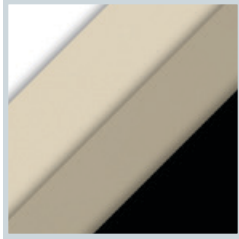
2 1/2" frame depth and a slimline design with exterior bevels provide strength and beauty. Our frame and sash are fully fusion welded extruded UPVC.

**Aluminum Reinforced Sash:**

The sash is reinforced with extruded aluminum stiffeners in the full perimeter of the sash. The sash is also glazed on the exterior for a more attractive appearance on the interior.

**LoE<sup>3</sup> Glass:**

The 6100 single hung comes with 3/4" insulated clear or argon filled LoE<sup>3</sup> high performance glass. Double LoE or laminate glass options are also available.

**Color Options:**

White  
Tan  
Sandstone  
Midnight

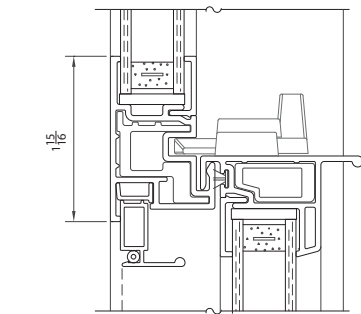


# 6100

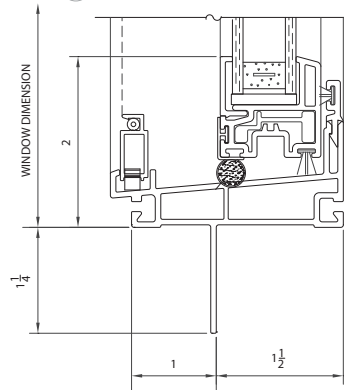
## VINYL SINGLE HUNG WINDOW

### 6100 SERIES | DETAILS

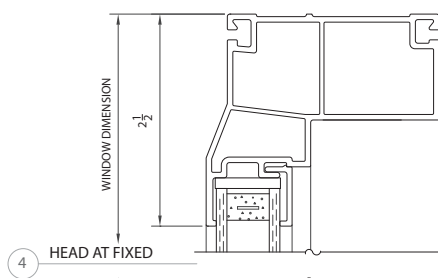
CD 10051



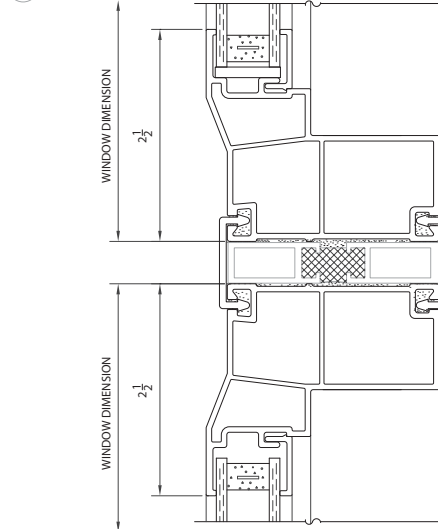
2 MEETING RAIL



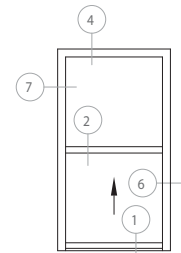
1 TYP. SILL AT SASH



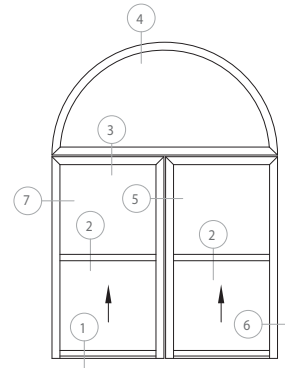
4 HEAD AT FIXED



3 TYP. MULLION



TYPICAL SINGLE HUNG



TYPICAL 2-LITE SINGLE HUNG W/ ROUND TOP

SHEET NO: 1

6100 SERIES SINGLE HUNG WINDOW

GERKIN, INC. 2015 COA

GERKIN WINDOWS & DOORS RESERVES THE RIGHT TO CHANGE OR DISCONTINUE MANUFACTURING ANY OF ITS STANDARD WINDOW SYSTEMS OR COMPONENTS WITHOUT PRIOR WRITTEN NOTICE.





# 6100

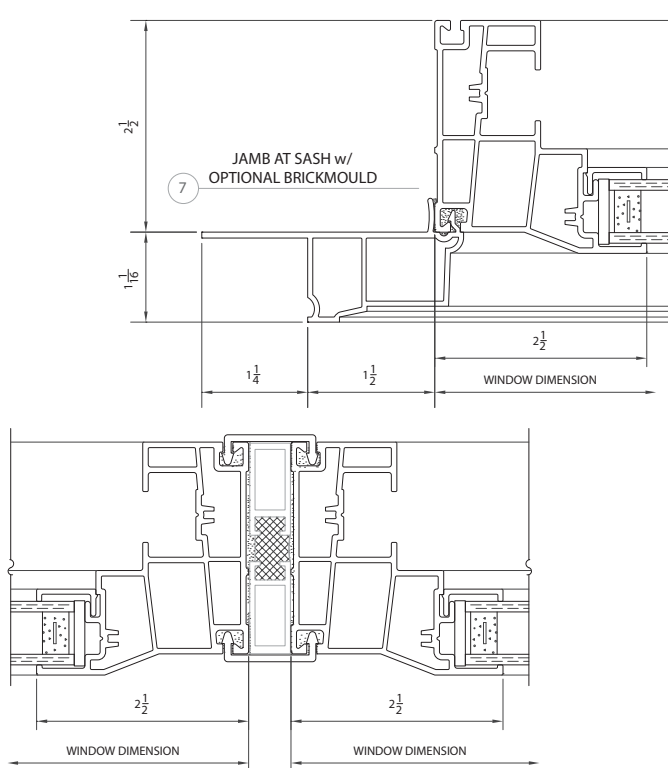
## VINYL SINGLE HUNG WINDOW

6100 SERIES | DETAILS

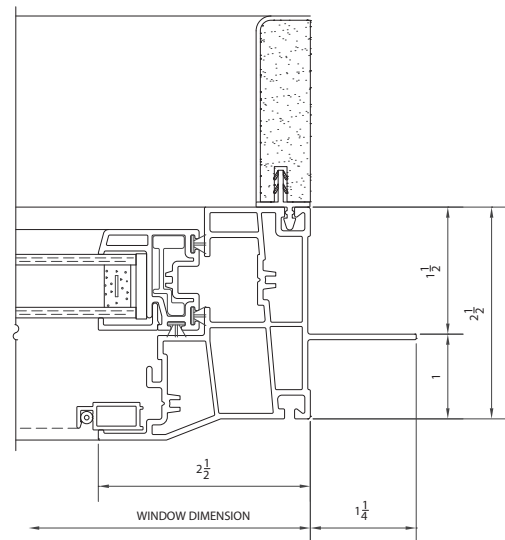
SHEET NO:

2

6100 SERIES SINGLE HUNG WINDOW



5 TYPICAL MULLION



6 JAMB AT SASH  
W/ EXTENSION JAMB

02/18/2021

02/18/2021



# 6100

## VINYL SINGLE HUNG WINDOW

### TESTING

We go to great extremes to make sure our Comfort Series Vinyl window and door products are the best they can be. Our products are tested by independent laboratories to ensure quality and performance. Our windows and doors are rated and certified by the American Architectural Manufacturers Association (AAMA) and the National Fenestration Rating Council (NFRC). Our Gerkin vinyl windows also carry the Energy Star label from the Environmental Protection Agency and the U.S. Department of Energy.

For more information about Comfort Series® vinyl windows and doors visit [gerkin.com](http://gerkin.com).



### 6100 SERIES | TEST RESULTS

#### NFRC | TEST RESULTS

U-Value	.30 cfm/sq.ft.
U-Value / Air Only*	.34
Solar Heat Gain Coefficient	.22
Visible Light Transmittance	.51
Condensation Resistance	58

\*U-Values for our windows with 1/8" 366 LoE3 glass, air only, 1/8" clear glass, no muntins or argon in the air space.

"Thermal Value w/ 1/8" 366/Argon/ 1/8" Clear - No Muntins

#### AAMA | TEST RESULTS

##### Test Window | 2 Equal Lite 48" X 60"

Air Infiltration	.05 cfm/sq.ft.
Water	6.0 psf
Structural	60 psf
Indoor/Outdoor Sound Transmission Class	28
Sound Transmission Class (w/ 1/4 LAM X 1/8 A)	33
AAMA Rating	LC-PG40-H

#### AAMA | TEST RESULTS

##### Test Window | 2 Equal Lite 44" X 77"

Air Infiltration	.06 cfm/sq.ft.
Water	6.0 psf
Structural	60 psf
Indoor/Outdoor Sound Transmission Class	28
Sound Transmission Class (w/ 1/4 LAM X 1/8 A)	33
AAMA Rating	LC-PG40-H

Tested and Certified to AAMA/WDMA/CSA 101/I.S.2/A440-05 & A440-08 U-Value/SHGC/VT/CRF Tested to NFRC 100/200/500



800.475.5061 | [gerkin.com](http://gerkin.com)





## SERIES 6100 SINGLE HUNG/SINGLE TILT VINYL WINDOW SPECIFICATIONS

\* Gerkin Windows & Doors Series 6100 is a 2 1/2" residential / light commercial grade single hung window with superior performance capabilities. This window meets or exceeds all AAMA residential design and performance criteria. The series 6500 fixed window complements the 6100 series windows in horizontal or vertical stacking configurations. A complete line of mullions, 'J' channel, and other accessories is also available.\*

### SECTION 08630 VINYL WINDOWS

#### PART 1: GENERAL

##### 1.01 Work Included

- A. Furnish and install residential vinyl windows complete with hardware and related components as shown on drawings and specified in this section.
- B. All windows shall be Gerkin Windows & Doors Series 6100 Single Hung Windows. Other manufacturers requesting approval to bid their product as an equal must submit the following information fifteen days prior to close of bidding.

- 1. Sample window \* STATE SIZE AND CONFIGURATION \*
- 2. Test reports and AAMA Notices of Certification documenting compliance with the requirements of Section 1.04.

- C. Glass and Glazing
  - \* Specify glass and glazing in this section if window assemblies are to be glazed by the window manufacturer. If glazing is to be done by a different contractor, glass and glazing should be specified in section 08800. Gerkin Windows & Doors recommends that the window manufacturer perform the glazing.\*

##### 1.02 Related Work

##### 1.03 Items Furnished but not Installed

##### 1.04 Testing and Performance Requirements

- A. Test Unit
  - 1. Air, water and structural test unit sizes and configurations shall conform to the requirements set forth in ANSI/AAMA/NWWDA 101/I.S. 2-97
- B. Test Procedures and Performance
  - 1. Windows shall conform to all ANSI/AAMA/NWWDA-101/I.S.2-97 DH-R35 / LC35 requirements for the window type referenced in 1.01B. in addition, the following specific performance requirements shall be met.
  - 2. Air infiltration Test
    - a. With window sash closed and locked, test the unit in accordance with ASTM E 283-84 at static air pressure difference of 1.57 psf.
    - b. Air infiltration shall not exceed 0.12 cfm/FT<sup>2</sup>.

##### 3. Water Resistance Test

- a. With window sash closed and locked, test unit in accordance with ASTM E 547-86 static air pressure difference of 6.0 psf.
- b. There shall be no uncontrolled water leakage.

##### 4. Uniform load structural test

- a. With window sash closed and locked, test unit in accordance with ASTM E 330-84 at a static air pressure difference of 52.5 psf positive pressure and 52.5 psf negative pressure.
- b. At the conclusion of test there shall be no glass breakage, permanent damage to fasteners, hardware parts, support arms or operating mechanism nor any other damage which would cause the window to be inoperable.

##### 1.05 Quality Assurance

- A. Provide test reports from AAMA accredited laboratories certifying the performance as specified in 1.04.

##### 1.06 References

##### 1.07 Submittals

- A. Contractors shall submit shop drawings, finish samples, test reports, and warranties.
  - 1. Samples of materials as may be requested without cost to owner, i.e., metal, glass, fasteners, anchors, frame sections, mullion sections, corner sections, etc.

##### 1.08 Delivery, Storage, and Handling

##### 1.09 Warranties

- A. Total Window System
  - 1. The responsible contractor shall assume full responsibility and warrant for one year the satisfactory performance of the total window installation which includes that of the windows, glass (including insulated units), glazing, anchorage, and setting system, sealing, flashing, etc. it relates to air, water, and structural adequacy as called for in the specifications and approved shop drawings.
  - 2. Any deficiencies due to such elements not meeting the specifications shall be corrected



by the responsible contractor at his expense during the warranty period.

## PART 2: PRODUCT

### 2.01 Materials

- A. Vinyl  
All extrusions shall be made from high impact UPVC (Unplasticized Polyvinyl Chloride)
- B. Hardware
  - 1. Locking shall be sweep stile style lock.
  - 2. The sash shall operate with two 5/8" block and tackle type balances.
  - 3. Flush mounted molded tilt latches.
- C. Weatherstripping
  - 1. Co-extruded vinyl bulb.
  - 2. Weatherstripping shall be finseal woolpile.
- D. Glass and Glazing
  - \* Gerkin Windows & Doors recommends that the window manufacturer finish and factory glaze the glass as specified by the architect. For this reason it is desirable that glass and glazing be part of this section. The 6100 Series is available with 3/4" insulated glazing. Please contact Gerkin Windows & Doors if other than the listed glazing is required. \*
- E. Reinforcement
  - 1. All internal frame and sash reinforcement shall be 6063-T6 aluminum alloy.

### 2.02 Fabrication

- A. General
  - 1. All frame members and sash extrusions shall have a minimum wall thickness of .065".
  - 2. Depth of frame shall not be less than 2 1/2".
- B. Frame
  - 1. Frame components shall be mitered and welded. Type listed in 2.01.A.
  - 2. The sill of the frame shall be sloped to the exterior for positive water drainage.
  - 3. The sill shall have one row of weatherstripping installed in a specially designed groove of type listed in section 2.01.C.2.
  - 4. Fixed mullion shall have an aluminum reinforcement as listed in section 2.01.E. attached to the mainframe with screws and sealed.
  - 5. Fixed mullion shall have a continuous locking groove.
  - 6. Fixed mullion shall have a continuous interlocking leg that captures an interlocking leg on the sash in the closed position.
- C. Sash
  - 1. All sash components shall be mitered and welded. Type listed in 2.01.A.
  - 2. All sash members shall have three rows of weatherstripping installed in specially designed grooves of the type listed in section 2.01.C.2.
  - 3. The sill of the sash shall have two rows of weatherstripping installed in a specially designed groove. Weatherstripping shall be one of the type listed in section 2.01.C.1 and one of the type listed in section 2.01.C.2.
  - 4. Sash meeting rail shall have a tube type aluminum reinforcement as listed in section 2.01.E

- 5. Sash meeting rail shall have a continuous interlocking leg that captures an interlocking leg on the fixed mullion.
- D. Screens (Optional)
  - 1. Screen frame shall be extruded aluminum.
  - 2. Screen mesh shall be a 18 x 16 \* aluminum or fiberglass mesh.
- E. Glazing
  - 1. Fixed units in mainframe shall be set from the interior against a continuous bead of silicone. The interior glazing retainer shall be of extruded vinyl and snap into a continuous receiver in the mainframe.
  - 2. The sash unit shall be set from the exterior against a continuous bead of silicone. The exterior glazing retainer shall be of extruded vinyl and snap into a continuous receiver in the sash. The sill glazing retainer shall be weeped to remove water.
- F. Hardware
  - 1. Locking hardware shall be located in the center of the sash along the sash meeting rail Type listed in 2.01.B.1.
  - 2. Locking hardware shall lock into a continuous groove on the fixed mullion.
  - 3. Sash shall operate on block and tackle balances. Type as listed in section 2.01.B.2.
  - 4. Sash shall have two tilt latches located on the meeting rail as type listed in section 2.01.B.3.

## PART 3: EXECUTION

### 3.01 Job Condition

- A. Verify that openings are dimensionally within allowable tolerances, plumb, level, clean, provide a solid anchoring surface and are in accordance with approved shop drawings.

### 3.02 Installation

- A. Use only skilled tradesmen with work done in accordance with approved shop drawings and specifications.
- B. Plumb and align window faces in a single plane for each wall plane and erect windows and materials square and true. Windows to be adequately anchored to maintain positions permanently when subjected to normal thermal and building movement and specified wind loads.
- C. Adjust windows for proper operation after installation.
- D. Furnish and apply sealant to provide a weathertight installation at all joints and intersections and at opening perimeters. Wipe off excess material and leave all exposed surfaces and joints clean or smooth.

### 3.03 Adjusting and Cleaning

- A. After completion of window installation, windows shall be inspected, adjusted, put into working order and left clean, free of labels, shipping pads, dirt, etc. Protection from this point shall be the responsibility of the general contractor.

\* Note to spec writers only, not to be included in specifications.\*