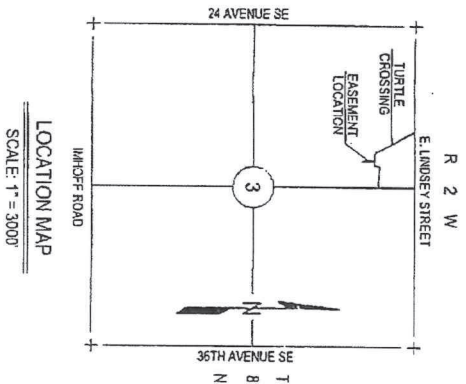


2-2021-82



Line Table		
Line #	Direction	Length
L1	S67° 36' 04"W	21.32'
L2	N89° 58' 25"E	20.01'

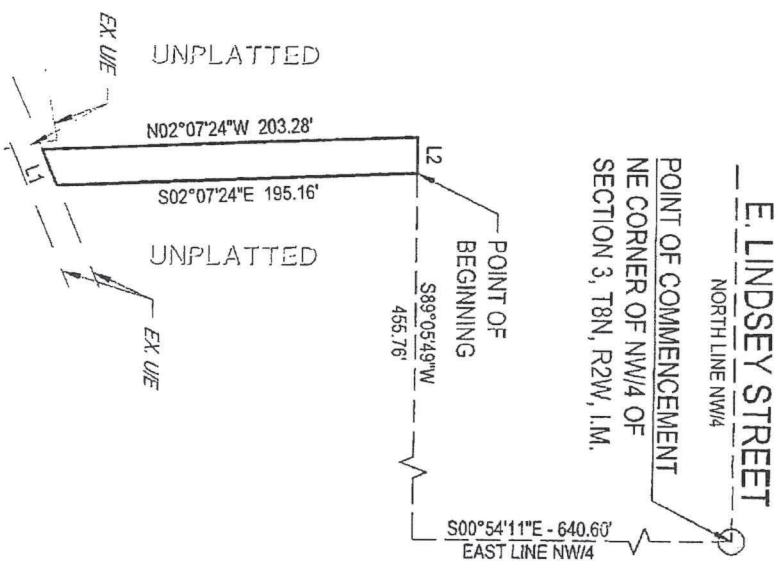
## LEGAL DESCRIPTION

A tract of land situate within the Northwest Quarter (NW1/4) of Section Three (3), Township Eight North (T8N), Range Two West (R2W) of the Indian Meridian (1.M.), Cleveland County, Oklahoma, being more particularly described by metes and bounds as follows:

COMMENCING at the Northeast corner said NW1/4; thence  
 S00°54'11"E along the East line of said NW1/4 a distance of 640.60 feet; thence  
 S89°05'49"W a distance of 455.76 feet to the POINT OF BEGINNING; thence  
 S02°07'24"E a distance of 195.16 feet; thence  
 S67°36'04"W a distance of 21.32 feet; thence  
 N02°07'24"W a distance of 203.28 feet; thence  
 N89°58'25"E a distance of 20.01 feet to the POINT OF BEGINNING.

Said tract contains 3,984 Sq Ft or 0.09 Acres, more or less.

BASIS OF BEARING: North Line of the NW1/4 of Section 3,  
 T8N, R2W, 1.M., N89°58'28"E



SCALE: 1" = 100'

SANITARY SEWER EASEMENT - ATTACHMENT A



**Crafton Tull**  
 Objective | Engineering | Surveying

405.787.6270 | 405.787.6273 |  
 www.craftontull.com

SHEET NO: 1 of 1  
 DATE: 07/24/20  
 PROJECT NO: 18614200