



Ms. Joy Baker
Port Director
City of Nome
P.O. Box 281
Nome, AK 99762

August 17, 2021
211002

Subject: Nome Local Services Facilities Design Proposal

Dear Ms. Baker:

PND Engineers, Inc. (PND) is pleased to provide this proposal to the City and Port of Nome (City) for the design of the Local Services Facilities (LSF) for the Arctic Port Expansion Project (APEP), Phase I, in Nome. A detailed scope of work is outlined below.

Phase I LSF Design and Permitting Components:

The LSF for Phase I of the APEP includes the following design components;

- Three (3) sheet pile docks located in the proposed expanded West Causeway
 - 1 each, 600' +/-
 - 2 each, 450' +/-
 - -42' dredge elevation (with over-dredge)
 - Gravel surface*
- Five (5) steel pile mooring dolphins in the proposed expanded West Causeway
- Industrial gravel surface* roadway sufficient to connect the existing West Causeway to the proposed LSF within the Phase I causeway expansion.
- Localized dredge as required for dock construction and within berthing areas of the LSF.
 - Berthing areas assumed to be twice vessel width utilized in the design of the LSF.
- Foundation design for high mast lights required at the three dock structures.

* Alternative asphalt and/or alternative surfacing for the roadway and dock structures is provided as a separate task and fee within this proposal.

Scope of Work:

Task A – Phase I Local Service Facilities Design

Project Meetings:

PND will attend regular meetings with the project team to coordinate project needs between all involved parties. Initially these project meetings are anticipated to be bi-weekly and then transition to weekly as the project progresses.

Phase I LSF Plans Specifications and Estimates (PSE):

PND will prepare bid ready PS&E for the Phase I LSF components in coordination with the United States Army Corps of Engineers (USACE) General Navigation Features (GNF) package. PS&E packages will be developed in 35%, 65%, 95% and 100% packages based on the attached project schedule. Each package will be prepared and submitted to the City for review and comment.

It is anticipated that close coordination with USACE will be required to incorporate the LSF within the GNF design. PND will work closely with USACE to ensure integration of the two designs.

A comprehensive engineering calculations package outlining the design of the LSF will be prepared and submitted to the City for submission to USACE for review with the 100% PS&E documents as outlined on the attached project schedule.

All plans will be developed in ACAD and/or Civil3D 2021 utilizing USACE provided title blocks and drafting standards.

Project specifications will be developed and submitted in SpecsIntact.

Project schedules will be developed in Primavera P6 or Microsoft Project whichever is preferred by the project team.

Cost estimates for the LSF will be developed in Hard Dollar estimating software.

It is expected that construction sequencing of the LSF and GNF will have significant impact to both construction costs and schedule. Close coordination of the LSF and GNF project teams will be required during design development to ensure the schedule and estimate assumptions are the most beneficial to the project as a whole and are accurately represented in the cost estimates and schedules.

Phase I LSF Milestone Reviews:

PND will attend a review meeting with the City, Nome Joint Utilities Services (NJUS), and USACE project team to review comments at each milestone submittal stage. Review comments will be compiled into a registry to be addressed prior to the next milestone submittal.

Phase I LSF Public Outreach:

It is assumed that the City and/or USACE will facilitate multiple public meetings during the design phase of this project to keep the public informed on the project and ensure public concerns are heard and addressed. PND will provide up to three trips to Nome to participate in Nome Common Council and/or Nome Port Commission meetings to present the current state of the project to the local community for comment and input. A summary report of all comments and any recommended actions from the meetings will be developed for the project record.

Task B – USACE Review Support

It is anticipated that a significant review of the LSF calculations and PS&E packages will be conducted by USACE. As this type of task is difficult to estimate, because the level of effort required to satisfy reviewer comments varies greatly from project to project, PND has proposed a Time and Materials, Not to Exceed fee for this effort. We feel this fee is likely greater than will be required to cover the cost of this task and will keep the City informed during the review process should our costs approach the budget estimate during this portion of the work.

Task C – Alternative Surfacing Design

PND will develop surfacing design (e.g. asphalt, concrete pavers) for the three new LSF dock structures, the three existing dock structures in the existing outer harbor as well as the access

roadway along the causeway. It is assumed that roadway surfacing would extend along the entire causeway connecting to Port Road.

Task D – Permit Support

Phase I Permit Documents:

At the time of writing permitting scope amongst the LSF and GNF project team has not been delineated. The permitting fee in Table 1 represents a nominal fee to begin permitting coordination with USACE in the initial phases of the project. As permitting scope is clearly delineated in the coming months this fee may need to be adjusted to accurately represent the scope.

Schedule:

Deliverables for this project will follow the attached schedule. This schedule was prepared assuming the USACE provides PND with milestone deliverables (e.g. 3D Model, Geotechnical Report) on the timelines shown. Delay of these deliverables may result in delay of PND deliverables to the City.

Project Fees:

PND proposes to complete the above scope of work for the fees and fee structure outlined in Table 1. Should items outside the scope of work described above be required, PND can provide those on a T&M basis per the attached Standard Rate Sheet.

Table 1: LSF Design Fees

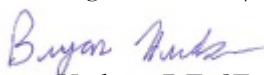
Task	Design Stage	Description	Fee	Fee Structure
A	35% Design	Local Service Facilities Design	-\$821,150	Fixed Fee
	65% Design		-\$1,058,425	
	95% Design		\$781,653	
	100% Design		\$157,477	
B	Following 95%	USACE Review Support	\$62,150	T&M NTE
C	N/A	Alternative Surfacing Design	\$106,750	Fixed Fee
D	Initial Onboarding Permitting	Permitting	-\$10,850	T&M NTE


Total Fixed Fees	\$2,925,455	\$1,045,880
Total T&M NTE Fees	\$73,000	\$ 62,150
Total Project	\$2,998,455	\$1,108,030
Total costs 95% to completion		

We look forward to working with you on this project. Should you have any questions or wish to discuss, please feel free to contact us.

Sincerely,

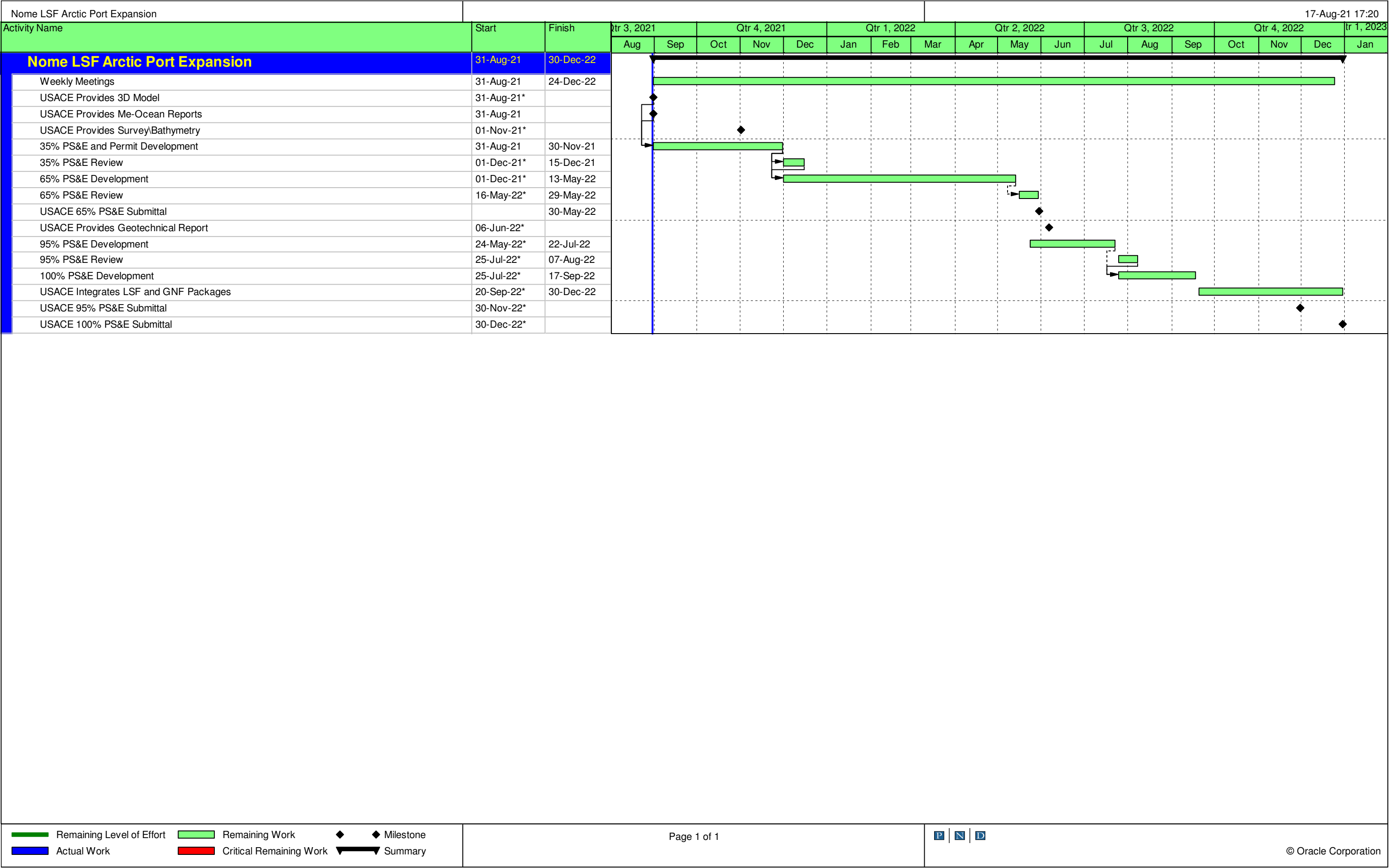
PND Engineers, Inc. | Anchorage Office


Bryan Hudson, P.E., SE.
Principal


Doug Kenley, P.E.
Vice President

Attachments:

Proposed Project Schedule
PND Standard Rate Schedule (1pg)



Page 1 of 1

P

N

D

© Oracle Corporation

**PND ENGINEERS, INC.
STANDARD RATE SCHEDULE
EFFECTIVE FEBRUARY 2021**

<u>Professional:</u>	Staff Engineer I	\$95.00
	Staff Engineer II	\$105.00
	Staff Engineer III	\$115.00
	Staff Engineer IV	\$120.00
	Staff Engineer V	\$125.00
	Staff Engineer VI	\$140.00
	Senior Engineer I	\$135.00
	Senior Engineer II	\$145.00
	Senior Engineer III	\$155.00
	Senior Engineer IV	\$165.00
	Senior Engineer V	\$175.00
	Senior Engineer VI	\$195.00
	Senior Engineer VII	\$210.00
	GIS Specialist	\$100.00
	Environmental Scientist I	\$100.00
	Environmental Scientist II	\$120.00
	Environmental Scientist III	\$135.00
	Environmental Scientist IV	\$150.00
	Environmental Scientist V	\$165.00
	Environmental Scientist VI	\$180.00
<u>Surveyors:</u>	Senior Land Surveyor I	\$110.00
	Senior Land Surveyor II	\$120.00
	Senior Land Surveyor III	\$130.00
<u>Technicians:</u>		
	Technician I	\$55.00
	Technician II	\$80.00
	Technician III	\$90.00
	Technician IV	\$100.00
	Technician V	\$125.00
	Technician VI	\$140.00
	CAD Designer III	\$80.00
	CAD Designer IV	\$95.00
	CAD Designer V	\$115.00
	CAD Designer VI	\$125.00