



Memo

To: Lee Smith – City Manager
From: Lucas Stotts – Harbormaster
CC: Nome Port Commission
Date: July 8, 2025
Re: 4th Quarter Report F25

Office/Accounting:

Port staff continue to work on collection efforts for customers that have returned for the ice-free season, as well as those no longer using the facility. This follow up activity occurs in and around daily operations with customers in the normal course of business.

Staff have been busy planning, budgeting and dealing with compliance issues along with reconciling items in the field with account records. Updates to stats are underway with fiscal year closing to incorporate into fiscal planning and health.

Caitlin LeClair is in the Port Office for the summer season assisting with accounting and office management as well as helping with the Finance department with various tasks. Alex Thomson has returned and continues to perform well with the City in the summer full-time position of Deputy Harbormaster. Nellie Iyapana was hired in the seasonal position of Dock Watch assisting with field operations and security duties.

Operations:

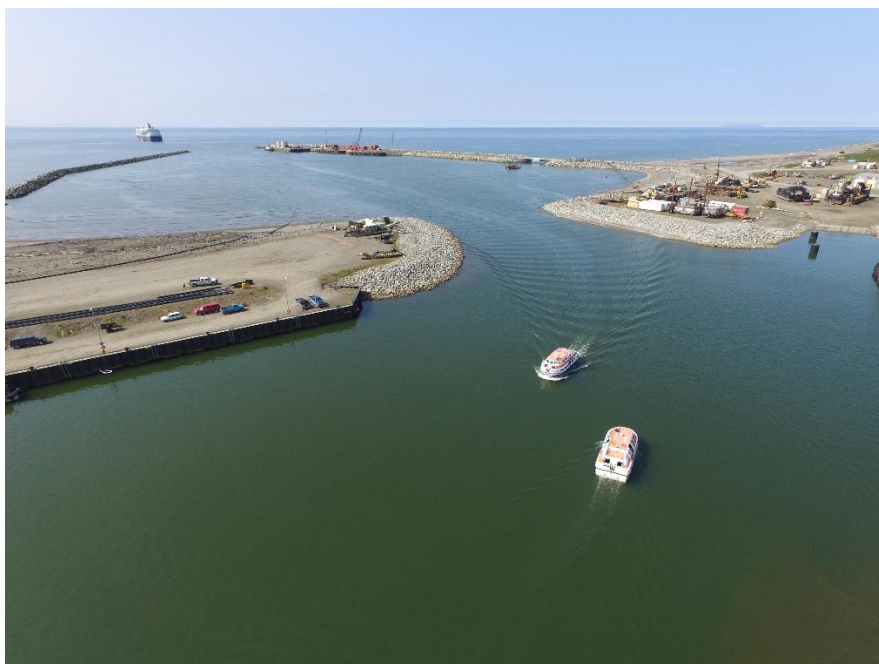
The Port of Nome summer shipping season typically begins in the last weeks of May and we are in full-swing by the first week of July. The winter seasonal ice traditionally breaks up offshore and in the Outer Harbor in the last two weeks of May, and in the Small Boat Harbor the last week of May.

Cargo Operations started very busy at both the Causeway and Small Boat Harbor facilities, with Alaska Marine Lines using the majority of the port uplands space for cargo ops. Nome serves as the regional hub for the shipment of cargo, gravel and equipment throughout the region. Brice Marine has large rock haul projects in Shishmaref and Barrow which are underway, with vessels utilizing the facility several times each week. That traffic will continue to increase as the Barrow project becomes fully online and continue until freeze up. This is a multi-year project and Brice has signed a contract with the Port of Nome for storage land. We also have various other smaller rock/gravel projects the PON is supporting this summer season.

DOA	DOD	SHIP NAME	MAX PAX #	BERTH
06.19.25		WESTERDAM	1849	Anchor
07.08.25		ROALD AMUNDSON	530	Middle + WG
08.09.25		ROALD AMUNDSON	530	Middle + WG
08.17.25		HANSEATIC INSPIRATION	230	Anchor
08.26.25		NG RESOLUTION	142	City + Middle
08.27.25	08.28.25	SEABOURN VENTURE	450	Anchor
09.06.25		HANSEATIC SPIRIT	230	Anchor
09.09.25		FRIDTJOF NANSEN	530	Middle + WG
09.16.25		SILVER ENDEAVOUR	150	Anchor
09.23.25		SYLIVA EARLE	200	Middle + WG
09.25.25		LE COMMANDANT CHARCOT	270	Anchor

(2025 Cruise Ship Schedule)

11 total cruise port calls are schedule for Nome in the 2025 season. The first cruise the WESTERDAM broke our record for most passengers off one vessel with 1710 guests being lightered to shore to enjoy Nome in a single day. 7 of the cruise stops will be a full-turn, or have passengers both being loaded and unloaded from the vessel and flying in/out of Nome with luggage. We have not yet received word on how many of the trips include local city tours, gold panning, etc. We continue to see the trend of cruises holding more passengers and being larger in length.



(Nome Harbor 06.19.25 WESTERDAM Cruise offshore with Tenders lightering)

Maintenance:

Work in progress or completed:

- Apply coatings and repair Floating Docks for Small Boat Harbor
- Installed High Mast Light units on West Gold and City Docks in the spring.
- Launched Floating Docks and installed for the season.
- Completed repair work to the fuel cargo lines under the Causeway bridge.
- Coordinate with port customers to relocate items from the Garco area and container rows to a new storage location in preparation for the PON expansion project scheduled for 2026.
- Install tide gauge boards to give staff and users a visual indicator to the current water levels in the facility.
- Continue to weld and service Bull rail on Causeway docks and then paint yellow coating.
- Investigate costs and scope for the Thornbush Pad and continue to fill undeveloped portions.
- New Floating Docks for small craft in Small Boat Harbor through grant application.
- New used oil collection tank for Small Boat Harbor.
- Replace remaining ring buoy lines with line bags to provide further reach and protection from UV rays.
- Perform annual maintenance on port vehicles and install new radios and hand lighting units.
- Spring facility annual cleanup.
- Remove Floating Dock side boards and decking and replace with new wood and skid plates.
- Move remaining containers to new container row location on the North section of the TBS pad.
- Surface grading and washout repair from heavy commercial equipment traffic and fall erosion due to storms.

Vehicle Status:

2010 Guardian SAR/Workboat (Good)

2010 Guardian Trailer (Good)

2012 GMC Sierra Crew Cab 4X4 (Good)

2014 FORD F250 4X4 (Good)

2014 FORD Explorer (Good)

2020 TuffBoat Work Skiff (Good)

2020 TuffBoat Work Skiff Trailer (Good)

2023 F-350 Super Duty Flatbed (New)