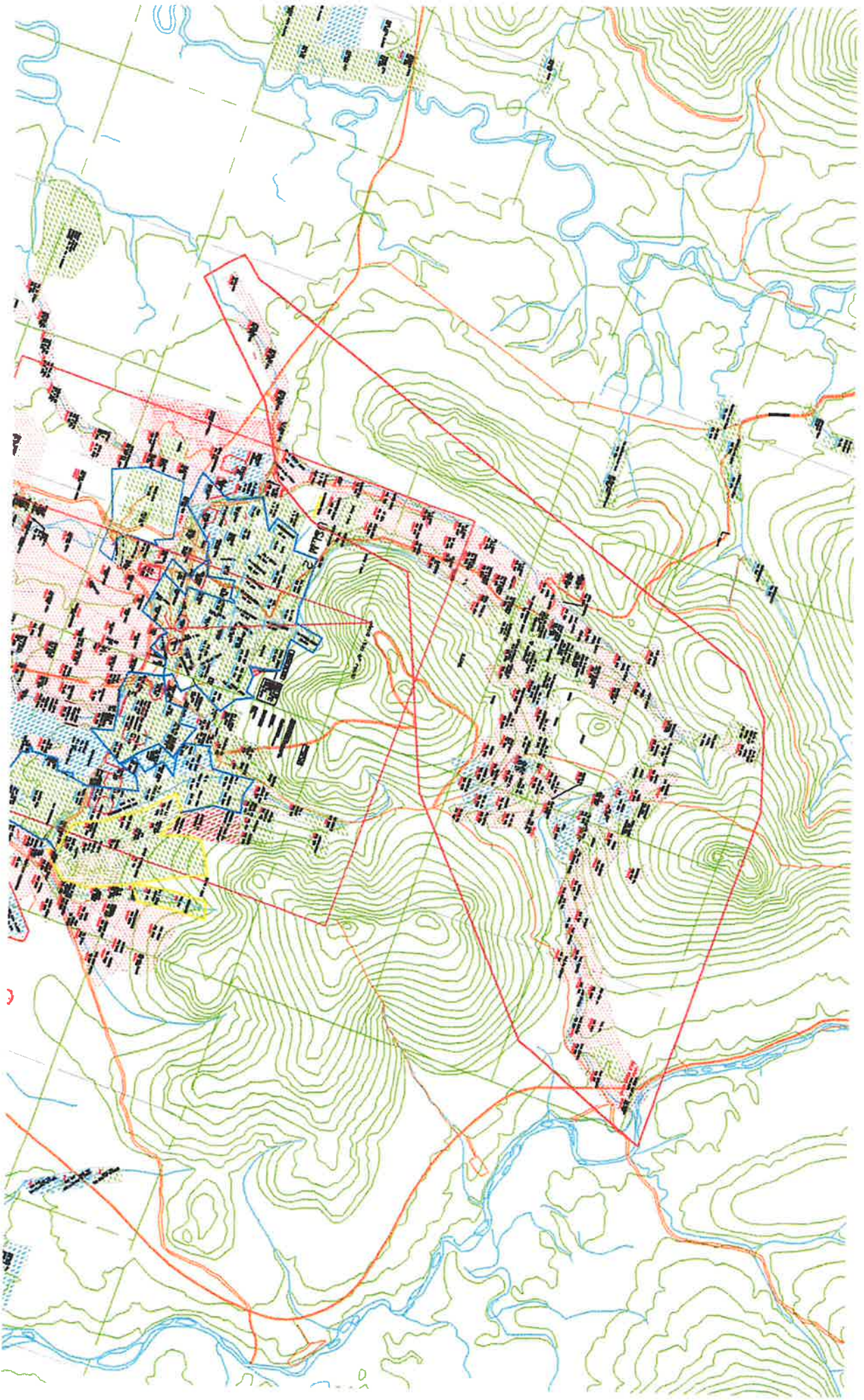


Dredge 6 Area & Anvil, Dexter Creeks Land Sale.

Lot, Tract Name:	Acreage	Price per acre	Total
Multi MS*	292	35,000.00	\$10,220,000.00
Multi MS**	1,466.52	1,400.00	\$2,053,128.00
Total:			<b>\$12,273,128.00</b>
			<b>\$12,280,000.00</b> Sale price

\*- Potencial buyer dredge 6 are properties, will pay all subdivision fees

\*\* -In Package 91 Patent Claims with mineral righth.





## Anvil, Dexter Creeks Claims Name and Acreage

MS #	Claim Name	Acre	Less	Remain
466	Excess R. L. Placer	19.23	0.00	19.23
466	No. 3 Below Discovery	15.60	0.00	15.60
466	No. 4 Below Discovery	19.84	0.00	19.84
466	No. 5 Below Discovery	19.19	0.00	19.19
466	No. 6 Below Discovery	19.60	0.00	19.60
485	No. 7 Bench Placer	20.00	0.00	20.00
485	Moonlight Fraction	2.15	0.00	2.15
485	No. 2. Below on Moonligh Creek Placer	9.74	0.00	9.74
1153	No. 2 Below Discovery Placer	18.91	0.00	18.91
722	No. 1 Above Placer	18.03	0.00	18.03
722	Zip Coon Fraction	1.16	0.00	1.16
722	Discovery Placer	18.80	0.00	18.80
1368	Good Luck Bench No. 3 Below	15.77	0.00	15.77
722	No. 1 Above Placer	18.03	0.00	18.03
433	My Girl Placer Claim	20.00	0.00	20.00
2114	Dayton Bench	19.49	0.00	19.49
722	No. 2 Above Placer	19.37	0.00	19.37
345	Snow Shoe Placer	19.27	0.00	19.27
345	Alabama Placer	14.22	0.00	14.22
2113	Florence Bench	19.34	0.00	19.34
1247	No. 3, Above Placer (Anvil Creek)	19.28	0.00	19.28
434	My Own Placer Claim	18.62	0.00	18.62
435	Delaware Fraction	6.44	0.00	6.44
1253	K.L. Placer	13.38	0.00	13.38
1205	Bench Claim No. 5 Below Placer	16.94	0.00	16.94
1192	No. 4 Above Placer	20.00	0.00	20.00
1287	No. 4 Below Specimen Gulch Place	17.06	0.00	17.06
1253	Omisk Fraction Placer	4.69	0.00	4.69
1184	Fabiola Bench Placer	13.78	0.00	13.78
347	No. 3 Below Specimen Gulch	18.43	0.00	18.43
714	No. 5 Above Placer	19.61	0.00	19.61
714	No. 6 Above Placer	19.92	0.00	19.92
714	No. 1 on Quartz Gulch Placer	13.68	0.00	13.68
714	No. 2 on Quartz Gulch Placer	3.71	0.00	3.71
2118	Anvil Fraction	0.31	0.00	0.31
428	No. 7 Above on Anvil	19.08	0.00	19.08
1223	No. 8 Above Discovery (or Eva L)	18.57	0.00	18.57
1183	Harold Bench Placer	18.32	0.00	18.32
1183	Highland Chief Placer	19.56	0.00	19.56
1342	No. 3 Specimen	12.70	0.00	12.70

1342	No. 4 Specimen	13.71	0.00	13.71
2125	Bench Claim No. 4	18.67	0.00	18.67
750	Bench Claim No. 4 Above Specimen Gulch Placer	16.92	0.00	16.92
1341	No. 3 Grass Gulch Placer Mining Claim	17.40	0.41	16.99
2126	Bullion Placer Mining Claim	19.89	0.00	19.89
1255	No 2. Bench Placer	14.40	0.00	14.40
1255	Golden Bench Placer	19.60	0.00	19.60
1255	Louise Bench Placer	14.00	0.00	14.00
2126	Bullion Placer Mining Claim	19.89	0.00	19.89
719	No. 3 Left Fork Dexter Creek Place	18.70	0.00	18.70
719	No. 2 Left Hand Branch Dexter Creek Placer	13.96	0.00	13.96
719	No. 1 Left Hand Branch Dexter Creek Placer	17.03	0.00	17.03
2126	Eagle Bench	10.67	0.00	10.67
2126	Nugget Claim	13.89	0.00	13.89
418	No. 13 Above on Dexter Creek	10.34	0.00	10.34
523	No. 1 Grass Gulch Placer	17.60	0.00	17.60
478	Bench No. 1 on Grass Gulch Place	16.54	0.00	16.54
478	Bella Fraction	1.04	0.00	1.04
1293	Good Luck Fraction Placer (Dexter Creek)	8.68	0.00	8.68
1246	No. 11 on Dexter Creek Placer	8.60	0.00	8.60
385	No. 9 Above Discovery Placer	19.61	0.00	19.61
1149	Oro Grande Placer	19.99	0.00	19.99
1221	No. 10 Above Discovery	15.00	0.00	15.00
1221	No. 11 Above Discovery	15.06	0.00	15.06
1195	Nakkela Placer	9.54	0.00	9.54
1196	Lena Placer	11.32	0.00	11.32
1196	Mattie Placer	14.13	0.00	14.13
1386	Mandeline Fraction Placer	11.71	0.00	11.71
672	No. 13 Left Fork Anvil Creek	18.96	0.00	18.96
2115	Seattle Bench Claim	35.13	0.00	35.13
346	No. 2 on Deer Gulch Placer	11.42	0.00	11.42
1254	All Gold Fraction Placer	4.20	0.00	4.20
1254	Sugar Mine Bench Grouse Creek Placer	16.03	0.00	16.03
1179	Molasses Placer	18.94	0.00	18.94
1816	Snow Bird Placer	7.78	0.00	7.78
1357	Opal Placer	31.79	0.00	31.79
1802	Malamute Association Placer	34.45	0.00	34.45
476	No. 1 on Grouse Gulch Placer	13.71	0.00	13.71
477	Bloomer Bench Placer	18.12	0.00	18.12

713	No. 8 Above Dexter Creek Placer Claim	9.52	0.00	9.52
511	Empire Placer	13.98	0.00	13.98
511	No. 7 Dexter Creek	12.48	0.00	12.48
511	No. 6 Dexter Creek Placer	14.66	0.00	14.66
511	No. 6 Bench Placer	19.58	0.00	19.58
712	No. 5 Above on Dexter Creek Placer Claim	8.56	0.00	8.56
1394	Red Fox Group Placer	40.00	0.00	40.00
1394	Owl Group Placer	35.00	0.00	35.00
510	No. 4 Dexter Creek Placer	12.13	0.00	12.13
510	No. 3 Dexter Creek Placer	17.67	0.00	17.67
711	No. 2 Above on Dexter Creek Placer Claim	14.73	0.00	14.73
509	No. 1 Dexter Creek Placer	12.60	4.94	7.67
1394	White Fox	40.00	19.22	20.78
	Total Acreage:	1,491.08	24.56	1,466.52