

PART OF THE SE. 1/4, OF SECTION 33, T.7N., R.1W., S.L.B. & M.

FERNWOOD ESTATES NO. 6

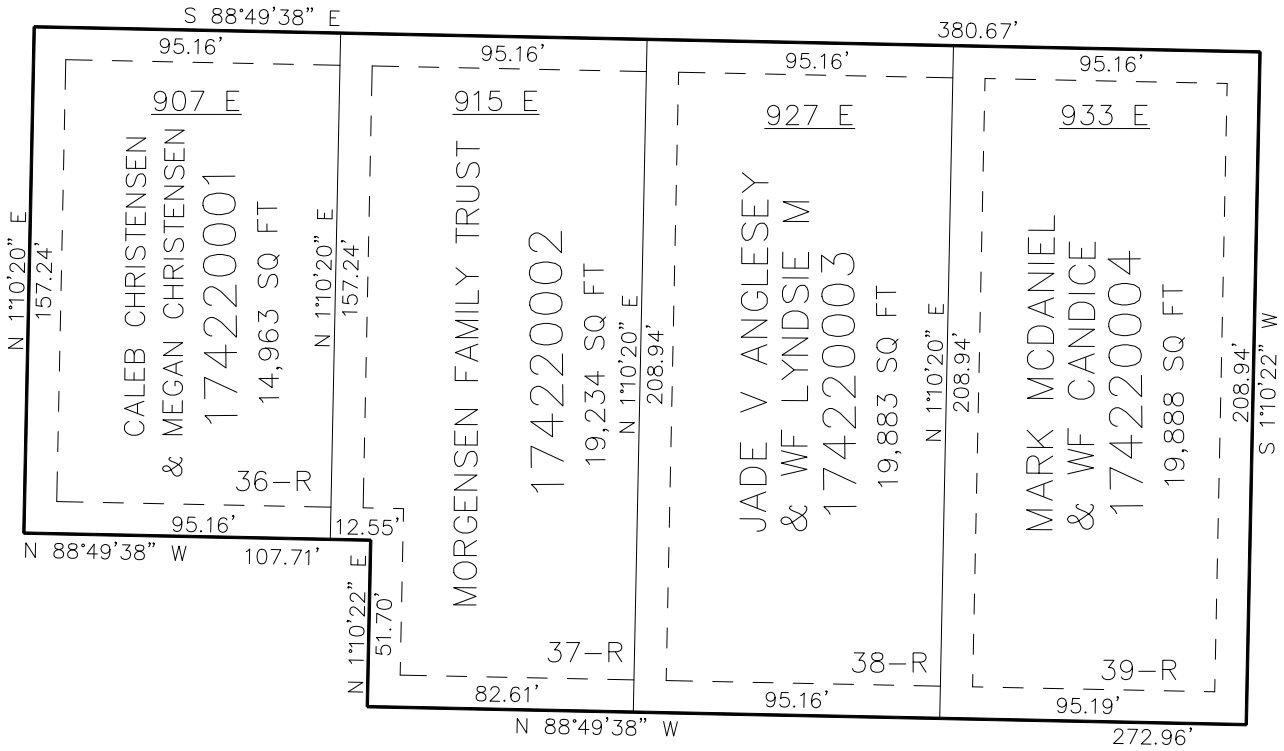
IN NORTH OGDEN CITY

TAXING UNIT: 10

SCALE 1" = 30'

SEE PAGE 75

2100 NORTH STREET



SEE PAGE 75

10' UTILITY & DRAINAGE EASEMENTS EACH SIDE OF PROPERTY LINES AS INDICATED BY DASHED LINES EXCEPT AS OTHERWISE SHOWN.

FOR COMPLETE ENC DATA SEE ORIGINAL DEDICATION PLAT IN BOOK 88, PAGE 26 OF RECORDS.