

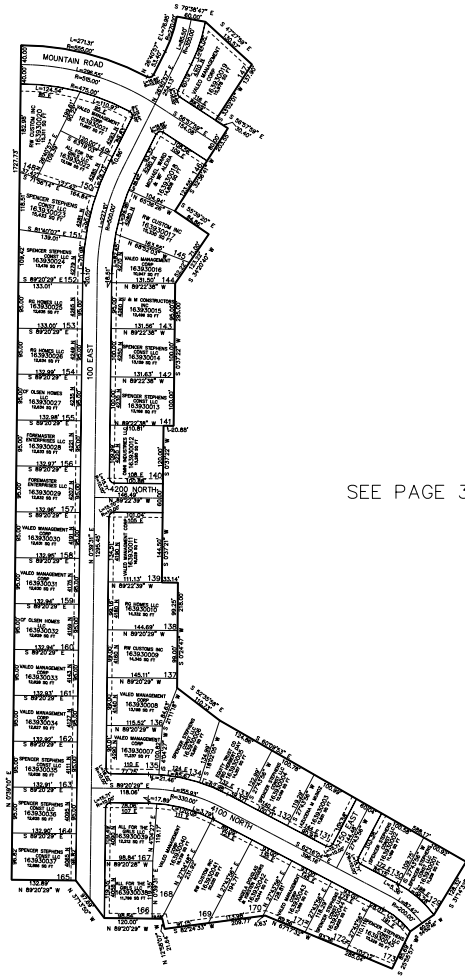
PART OF THE N. 1/2, OF SECTION 20, T.7N., R.1W., S.L.B. & M.
NORTHVIEW ESTATES SUBDIVISION PHASE 8

IN NORTH OGDEN CITY

SCALE 1" = 200'

TAXING UNIT: 10

SEE PAGE 37-1



SEE PAGE 37-1

SEE PAGE 37-1

SEE PAGE 37-1

10' UTILITY & DRAINAGE EASEMENTS EACH
SIDE OF PROPERTY LINES AS INDICATED
BY DASHED LINES EXCEPT AS OTHERWISE
SHOWN.

FOR COMPLETE SURVEY DATA SEE
ORIGINAL DEDICATION PLAT IN
BOOK 93, PAGE 49 OF RECORDS.